

Upgrade Information of MPE720 Version 7.65

1. Added and Improved Functions

1.1 Version 7.65 Upgrade Information

Items added and features improved from MPE720 version 7.64 to version 7.65 are as follows.

No.	Feature	Classification
1	Added CM-CF02 unit for YRM-X controller.	New function
2	Added controllers supported new logging function.	New function
3	Added controllers supported Sigma-X.	New function
4	Expanded BUFIF size for MP3100.	New function
5	Added power unit PSD-01 for YRM-X controller.	New function
6	Improved the EtherNet/IP communication of YRM-X.	Improving
7	Improved the CP ladder.	Improving
8	Improved the maintenance monitor.	Improving
9	Improved the system monitor.	Improving
10	Improved the ladder compiler.	Improving

(*): When MPE720 Ver.7 before MPE720 Ver.7.11 is already installed in Windows Vista and Windows 7, it may not operate for the newest information of the servo model addition by the axial setup wizard function (the newest information added into the database) updated by after MPE720 Ver.7.13.

Please refer to the following page for operating procedures.

【About the restriction matter when using MPE720 Ver.7 in Windows Vista and Windows 7】

When MPE720 Ver.7 is used in Windows Vista and Windows 7, the following phenomena might be generated.

<Phenomena>

When MPE720 Ver.7 before MPE720 Ver.7.11 is already installed in Windows Vista and Windows 7, it may not operate for the newest information of the servo model addition by the axial setup wizard function (the newest information added into the database) updated by after MPE720 Ver.7.13.

<Measures>

Using a batch file, the following folder is deleted. (*1)

C:\Users\UserName(*2)\AppData\Local\VirtualStore\Program Files(*3)\YASKAWA\MPE720 Ver7

Procedure

1. The batch file enclosed by MPE720 Ver.7 installer is copied to a desktop.

【Download Version】

MPE720Ver7_xxx(*4)\Tools\CleanUp\MPE720Ver7_x86.bat (32bitOS)

MPE720Ver7_xxx(*4)\Tools\CleanUp\MPE720Ver7_x64.bat (64bitOS)

【DVD Media Version】

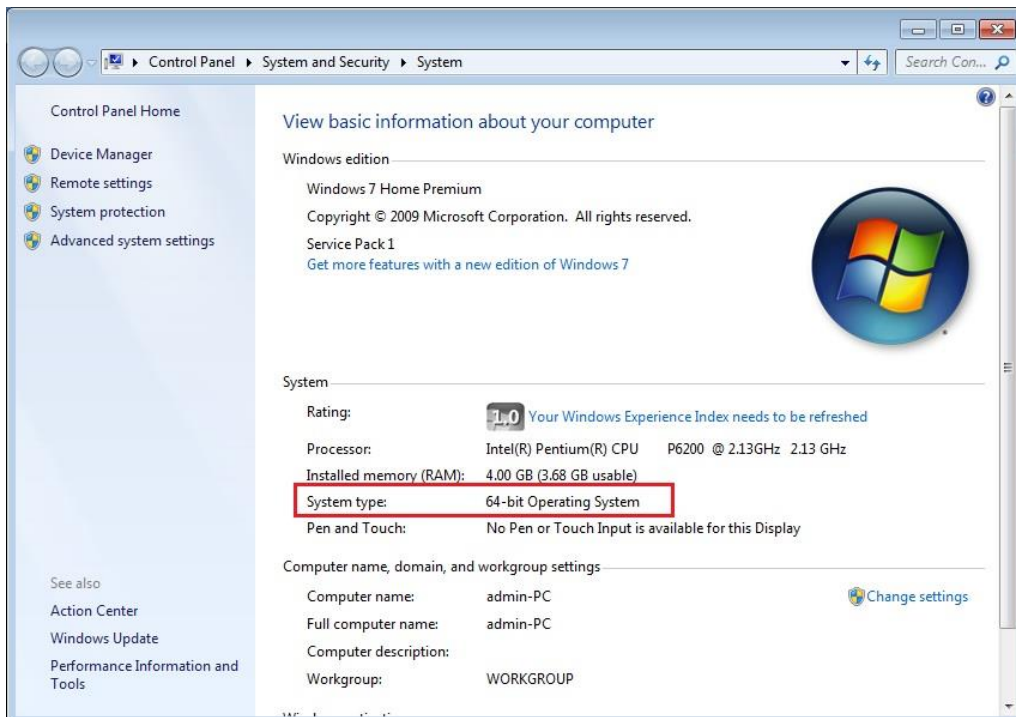
D(*5)\Tools\CleanUp\MPE720Ver7_x86.bat (32bitOS)

D(*5)\Tools\CleanUp\MPE720Ver7_x64.bat (64bitOS)

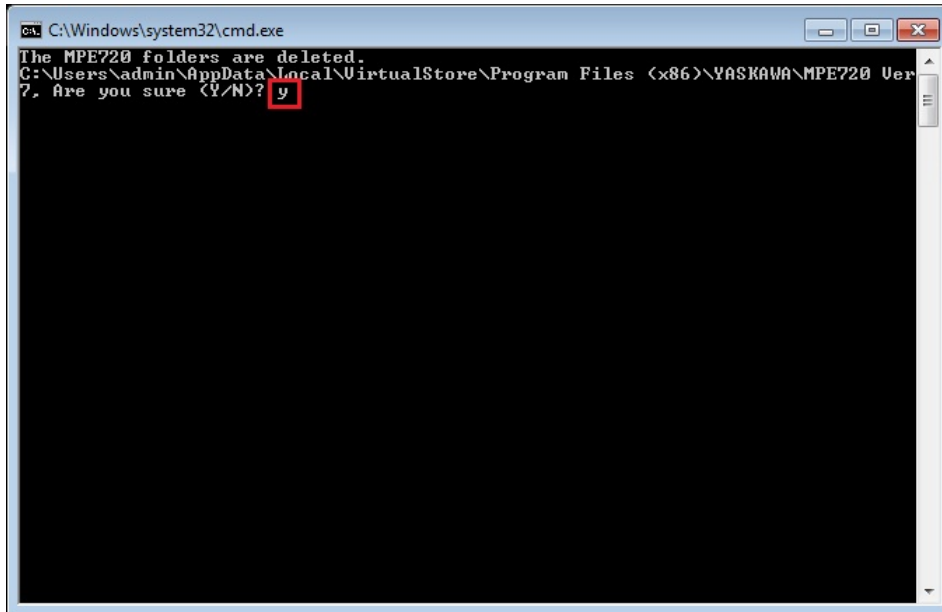
2. The copied batch file is performed.

MPE720Ver7_x86.bat (32bitOS)

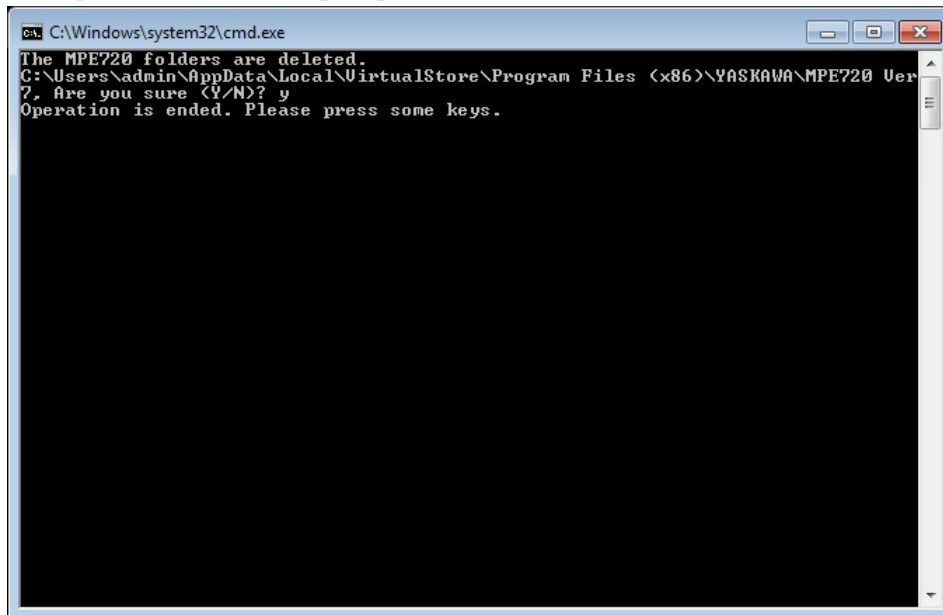
MPE720Ver7_x64.bat (64bitOS)



3. “y” is inputted on a command prompt and the Enter button is pushed.



4. The Enter button is pushed on a command prompt after deletion.



(*1): When multi-user is using one set of PC, please operate it by each user.

(*2): The user account name that logs in enters.

(*3): The path changes by OS.

32bitOS: Program Files

64bitOS: Program Files (x86)

(*4): The path changes by version.

(*5): The path changes by DVD drive.

(*6): When an installation path is changed at the time of MPE720 Ver.7 installation, please delete the “MPE720 Ver7” folder which a folder subordinate has below manually according to the installed path.

C:\Users\¥UserName(*2)\¥AppData\¥Local\¥VirtualStore

【About compile of the parallel circuit】

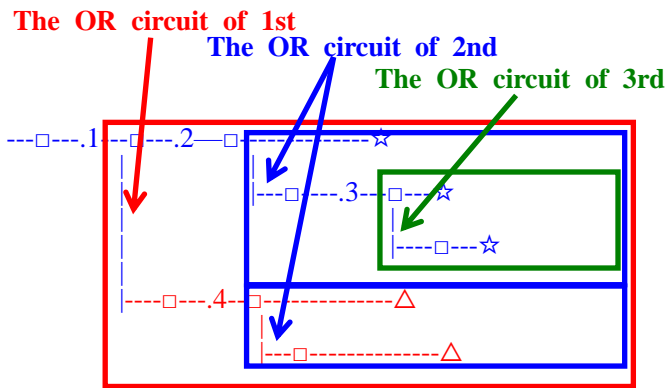
In the Ladder program of MPE720 Ver7 before MPE720 Ver7.23, when the parallel circuit is used, the following phenomena may occur.

<Phenomena>

When the circuit containing the following pattern was created, there was a phenomenon of operating without receiving the condition that the circuit below the OR circuit of 1st class must operate essentially in response to the conditional instruction before the OR circuit of 1st class.

<Measures>

When a phenomenon occurs, please carry out re-compile about the Ladder program in MPE720 Ver7 after MPE720 Ver7.24. Or please carry out again “Compile All Programs” of “Compile” menu.



The OR circuit of 1st class: The OR circuit branched from the bus-bar of language.

The OR circuit of 2nd class: The OR circuit branched out of the OR circuit of 1st class.

The OR circuit of 3rd class: The OR circuit branched out of the OR circuit of 2nd class.

□(Conditional instruction): NO Contact, NC Contact, Coil, instruction(==, !=, >, <), power line (-----) etc.

☆(Output instruction): Coil, Block instruction(Expression, STORE, COPYW) etc

※However, when all ☆ is coil commands, a phenomenon does not occur.

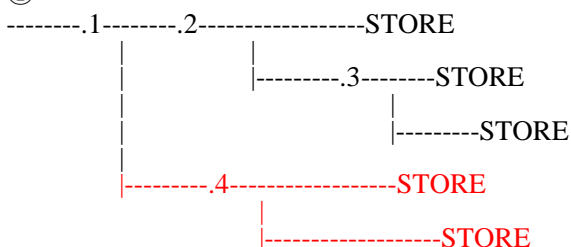
△(Output instruction): Coil, Block instruction(Expression, STORE, COPYW)etc

<Pattern>

Symbol	Instruction
	NO Contact
STORE	STORE instruction
()	Coil

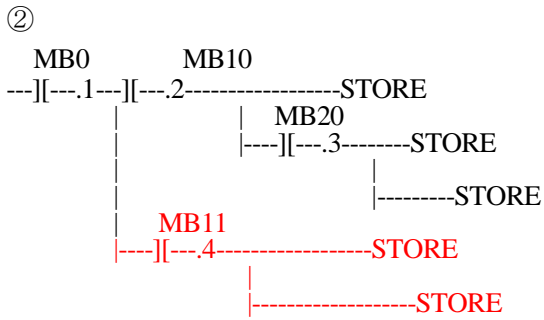
<NG Pattern>

①



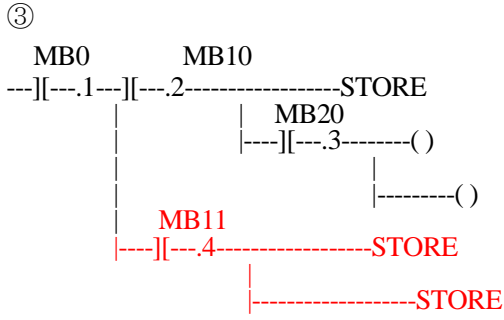
This pattern is minimum circuit pattern.

This is NG.



It is NG even if the minimum circuit pattern has conditional instructions (NO Contact etc.).

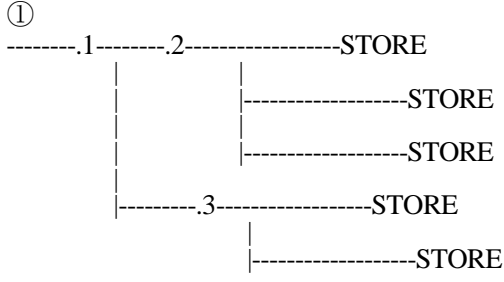
This is NG



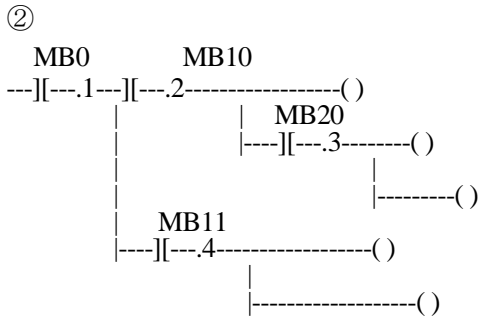
It is NG when there are at least one block commands (STORE command etc.) here.

This is NG

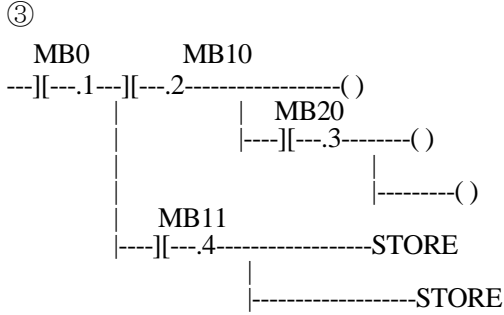
<OK Pattern>



Since it is the OR circuit of 2nd, it is OK.



Since it is the coil altogether, it is OK.



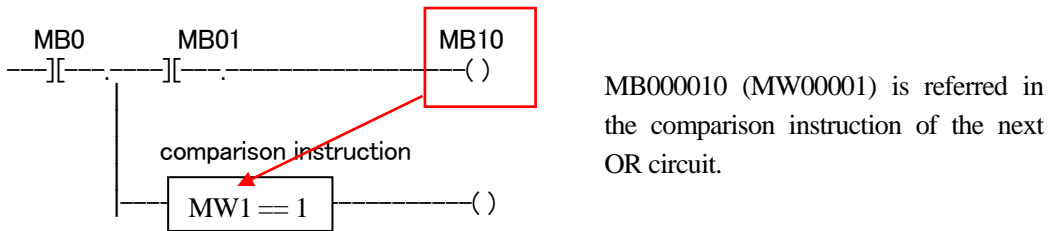
Since it is the coil altogether, it is OK.

【About compile with a comparison instruction in branch】

In the Ladder program of MPE720 Ver7 before MPE720 Ver7.63, when a comparison instruction is used in branch, the following phenomena may occur.

<Phenomena>

When the circuit containing the following pattern was created, the value of the register set in the upper OR circuit must be reflected to the comparison instructions in the lower OR circuit in the same scan. However, there was a phenomenon that it was reflected in the next scan.



<Measures>

When a phenomenon occurs, please carry out re-compile about the Ladder program in MPE720 Ver7 after MPE720 Ver7.64. Or please carry out again “Compile All Programs” of “Compile” menu. Also, about these programs that include circuits with this pattern, the number of internal steps will change in Ver7.64 or later, so when cross-reference is performed in a project created in an earlier version, there is a possibility of jumping to an unintended location. In this case, please recompile too.

1.2 Past Upgrade Information

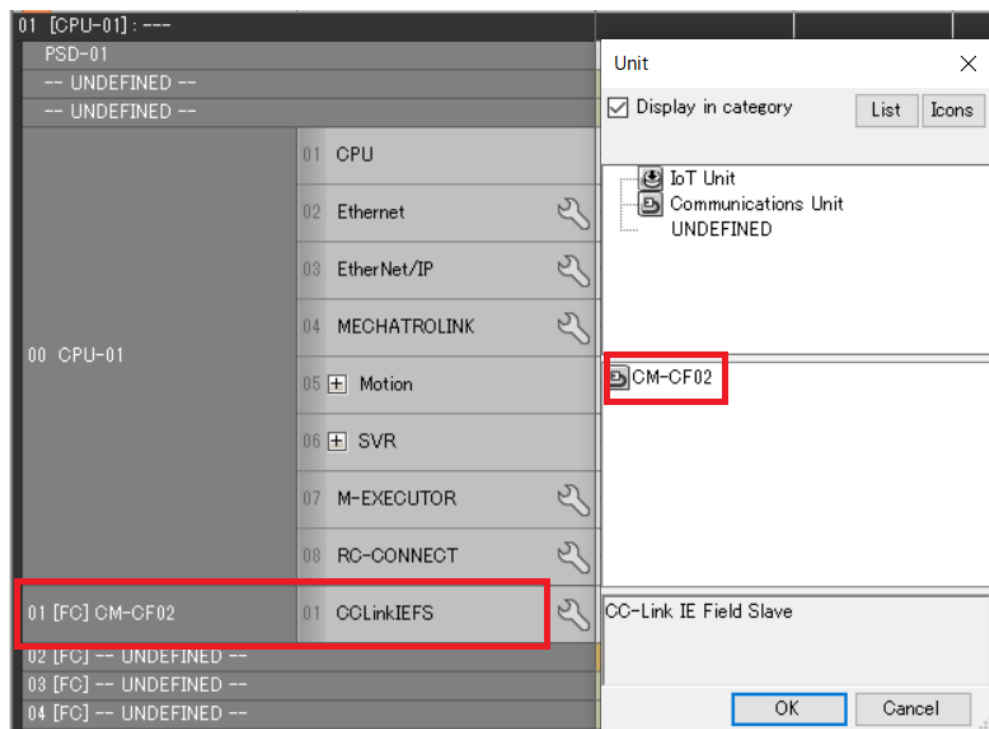
No.	Upgrade Information	Remarks
1	MPE720 version 7.11 upgrade information	version 7.10→version 7.11
2	MPE720 version 7.13 upgrade information	version 7.11→version 7.13
3	MPE720 version 7.14 upgrade information	version 7.13→version 7.14
4	MPE720 version 7.20 upgrade information	version 7.14→version 7.20
5	MPE720 version 7.21 upgrade information	version 7.20→version 7.21
6	MPE720 version 7.23 upgrade information	version 7.21→version 7.23
7	MPE720 version 7.24 upgrade information	version 7.23→version 7.24
8	MPE720 version 7.26 upgrade information	version 7.24→version 7.26
9	MPE720 version 7.27 upgrade information	version 7.26→version 7.27
10	MPE720 version 7.28 upgrade information	version 7.27→version 7.28
11	MPE720 version 7.29 upgrade information	version 7.28→version 7.29
12	MPE720 version 7.30 upgrade information	version 7.29→version 7.30
13	MPE720 version 7.31 upgrade information	version 7.30→version 7.31
14	MPE720 version 7.33 upgrade information	version 7.31→version 7.33
15	MPE720 version 7.34 upgrade information	version 7.33→version 7.34
16	MPE720 version 7.35 upgrade information	version 7.34→version 7.35
17	MPE720 version 7.36 upgrade information	version 7.35→version 7.36
18	MPE720 version 7.37 upgrade information	version 7.36→version 7.37
19	MPE720 version 7.38 upgrade information	version 7.37→version 7.38
20	MPE720 version 7.39 upgrade information	version 7.38→version 7.39
21	MPE720 version 7.40 upgrade information	version 7.39→version 7.40
22	MPE720 version 7.41 upgrade information	version 7.40→version 7.41
23	MPE720 version 7.42 upgrade information	version 7.41→version 7.42
24	MPE720 version 7.43 upgrade information	version 7.42→version 7.43
25	MPE720 version 7.44 upgrade information	version 7.43→version 7.44
26	MPE720 version 7.45 upgrade information	version 7.44→version 7.45
27	MPE720 version 7.46 upgrade information	version 7.45→version 7.46
28	MPE720 version 7.47 upgrade information	version 7.46→version 7.47
29	MPE720 version 7.50 upgrade information	version 7.47→version 7.50
30	MPE720 version 7.51 upgrade information	version 7.50→version 7.51
31	MPE720 version 7.52 upgrade information	version 7.51→version 7.52
32	MPE720 version 7.60 upgrade information	version 7.52→version 7.60
33	MPE720 version 7.62 upgrade information	version 7.60→version 7.62
34	MPE720 version 7.63 upgrade information	version 7.62→version 7.63
35	MPE720 version 7.64 upgrade information	version 7.63→version 7.64

2. Description

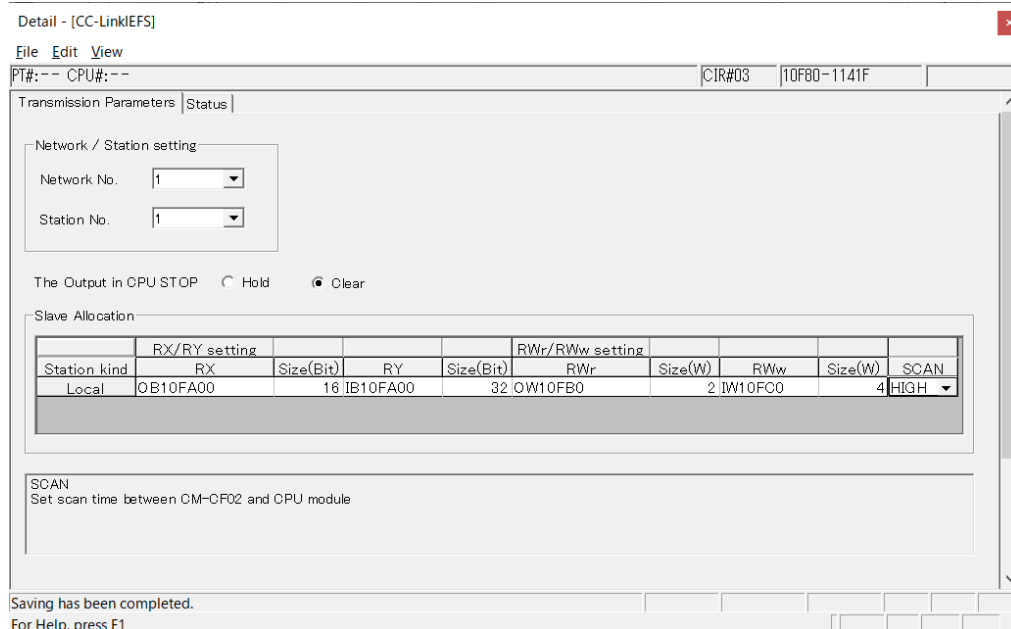
No. 1 Added CM-CF02 unit for YRM-X controller.

Added CM-CF02 unit that is CC-Link IE Field communication unit for YRM-X controller.

1) Select CM-CF02 unit for FC unit.



2) Detail definition screen is as same as 269IF-01 (CC-Link IE Field module for MP2000/3000).



[Supported Versions]

○Controller

Controller	Supported Firmware Version
YRM-X	1.03

No. 2 Added controllers supported new logging function.

The new logging function implemented in Ver.7.62 have also been applied to the following models.

- 1) YRM-X
- 2) CPU-203 (CPU-203SUB)

[Supported Versions]

○Controller

Controller	Supported Firmware Version
YRM-X	1.03
MP3000 Series	1.56

No. 3 Added controllers supported Sigma-X.

Sigma-X servo (MECHATROLINK-3 communication) can also be used with the following models.

- 1) MP2101T
- 2) MP2101TM
- 3) MPU-01
- 4) Sigma-7C

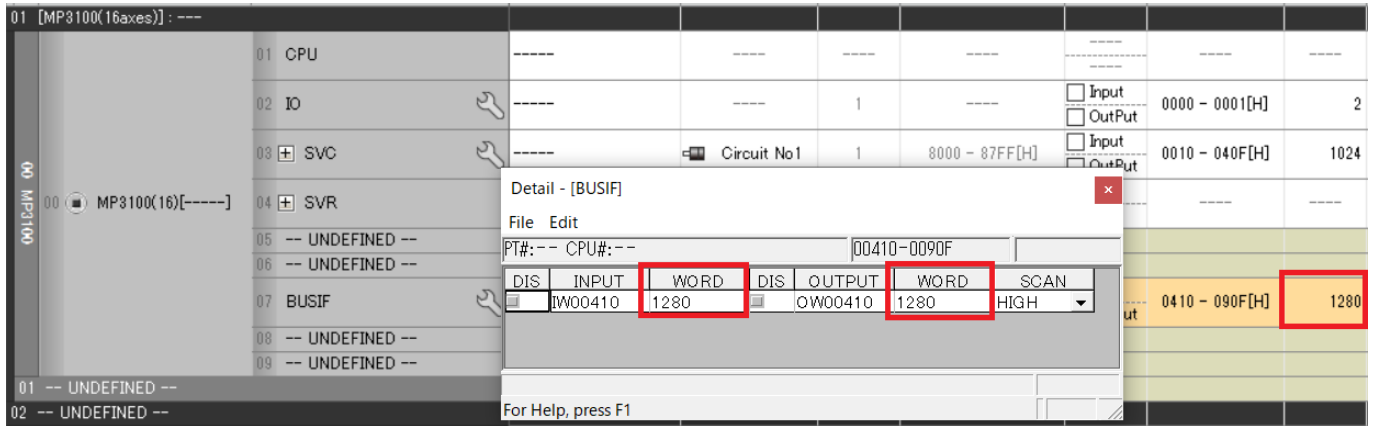
[Supported Versions]

○Controller

Controller	Supported Firmware Version
Σ-7 Series	1.07
MP2000 Series	2.88

No. 4 Expanded BUSIF size for MP3100.

The maximum size of MP3100 BUSIF I/O register has been expanded from 1024 to 1280 (words).



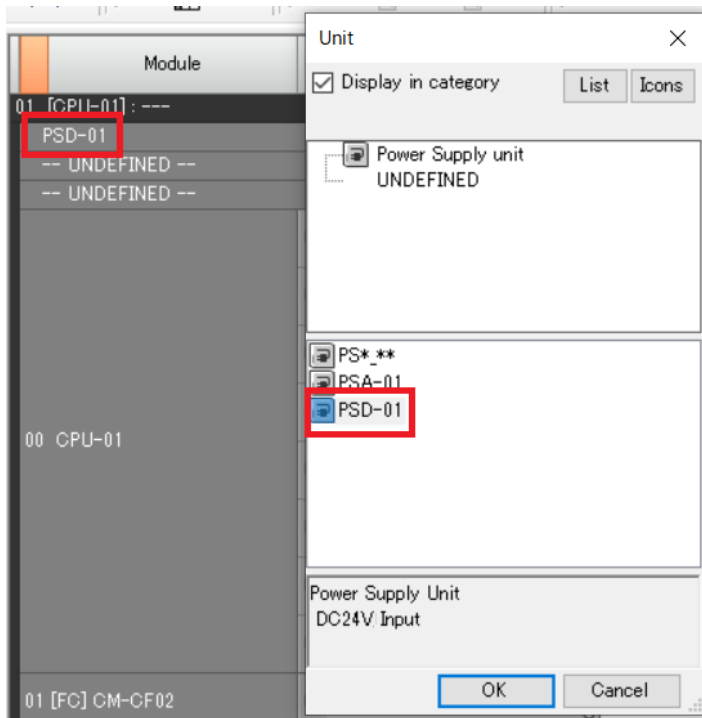
[Supported Versions]

○Controller

Controller	Supported Firmware Version
MP3000 Series	1.57

No. 5 Added power unit PSD-01 for YRM-X controller.

Added power unit PSD-01 for YRM-X controller.



[Supported Versions]

○Controller

Controller	Supported Firmware Version
YRM-X	Not dependent on the controller version.

No. 6 Improved the EtherNet/IP communication of YRM-X.

The setting of EtherNet/IP automatic transmission of YRM-X could not be saved, so this has been improved.

[Supported Versions]

○Controller

Controller	Supported Firmware Version
YRM-X	Not dependent on the controller version.

No. 7 Improved the CP ladder.

About the CP ladder, the following improvements were executed.

- 1) When using “Large/Normal” in View menu, the cursor’s shadow remains, so this has been improved.
- 2) The Maximum number of CP ladder window was 5 (it must be 16), so this has been improved.
- 3) The Tool Bar menu items “Standard” and ”Ladder Standard” were not visible, so this has been improved.

[Supported Versions]

○Controller

Controller	Supported Firmware Version
YRM-X	Not dependent on the controller version.
YRM-7	Not dependent on the controller version.
MP3000 Series	Not dependent on the controller version.
Σ-7 Series	Not dependent on the controller version.
MP2000 Series	Not dependent on the controller version.

No. 8 Improved the maintenance monitor.

Removed the unused "Encoder LED brightness" from the maintenance monitor parameters.

[Supported Versions]

○Controller

Controller	Supported Firmware Version
YRM-7	Not dependent on the controller version.
MP3000 Series	Not dependent on the controller version.
Σ-7 Series	Not dependent on the controller version.
MP2000 Series	Not dependent on the controller version.

No. 9 Improved the system monitor.

In some cases, the analyzed step number of user operation error in system monitor was not correct, so this has been improved.

[Supported Versions]

○Controller

Controller	Supported Firmware Version
YRM-X	Not dependent on the controller version.
YRM-7	Not dependent on the controller version.
MP3000 Series	Not dependent on the controller version.
Σ-7 Series	Not dependent on the controller version.
MP2000 Series	Not dependent on the controller version.

No. 10 Improved the ladder compiler

The following ladder compiler improvements were executed.

- 1) When using a calculation statement in the index of a register array in Expression, there was a case where overflow occurred, so this has been improved.
- 2) In some cases, the ladder program did not work correctly when the comparison instruction was used in the branch, so this has been improved.

[Supported Versions]

○Controller

Controller	Supported Firmware Version
YRM-X	Not dependent on the controller version.
YRM-7	Not dependent on the controller version.
MP3000 Series	Not dependent on the controller version.
Σ-7 Series	Not dependent on the controller version.
MP2000 Series	Not dependent on the controller version.