

Upgrade Information of MPE720 Version 7.40

1. Added and Improved Functions

1.1 Version 7.40 Upgrade Information

Items added and features improved from MPE720 version 7.39 to version 7.40 are as follows.

No.	Feature	Classification
1	Added the 269IF-01 to the communication module.	New Addition
2	Enhanced the Ladder Instruction Auto Complete function.	Functional Enhancement
3	Improved the compilation processing of motion editor.	Improvement
4	Improved the retry operation of communication.	Improvement
5	Improved the line break operation in comment on Expression instruction.	Improvement
6	Improved the register comment display function of Expression instruction.	Improvement
7	Improved the display processing of save confirmation message in logging function.	Improvement
8	Improved the transfer screen display process at using a multi display.	Improvement
9	Improved the unit display at monitor parameter startup.	Improvement
10	Improved the display of ladder program.	Improvement
11	Improved the wording on the detailed definition screen of SVC.	Improvement
12	Improved the motion editor display.	Improvement

(*): When MPE720 Ver.7 before MPE720 Ver.7.11 is already installed in Windows Vista and Windows 7, it may not operate for the newest information of the servo model addition by the axial setup wizard function (the newest information added into the database) updated by after MPE720 Ver.7.13.

Please refer to the following page for operating procedures.

【About the restriction matter when using MPE720 Ver.7 in Windows Vista and Windows 7】

When MPE720 Ver.7 is used in Windows Vista and Windows 7, the following phenomena might be generated.

<Phenomena>

When MPE720 Ver.7 before MPE720 Ver.7.11 is already installed in Windows Vista and Windows 7, it may not operate for the newest information of the servo model addition by the axial setup wizard function (the newest information added into the database) updated by after MPE720 Ver.7.13.

<Measures>

Using a batch file, the following folder is deleted. (*1)

C:\Users\UserName(*2)\AppData\Local\VirtualStore\Program Files(*3)\YASKAWA\MPE720 Ver7

Procedure

1. The batch file enclosed by MPE720 Ver.7 installer is copied to a desktop.

【Download Version】

MPE720Ver7_xxx(*4)\Tools\CleanUp\MPE720Ver7_x86.bat (32bitOS)

MPE720Ver7_xxx(*4)\Tools\CleanUp\MPE720Ver7_x64.bat (64bitOS)

【DVD Media Version】

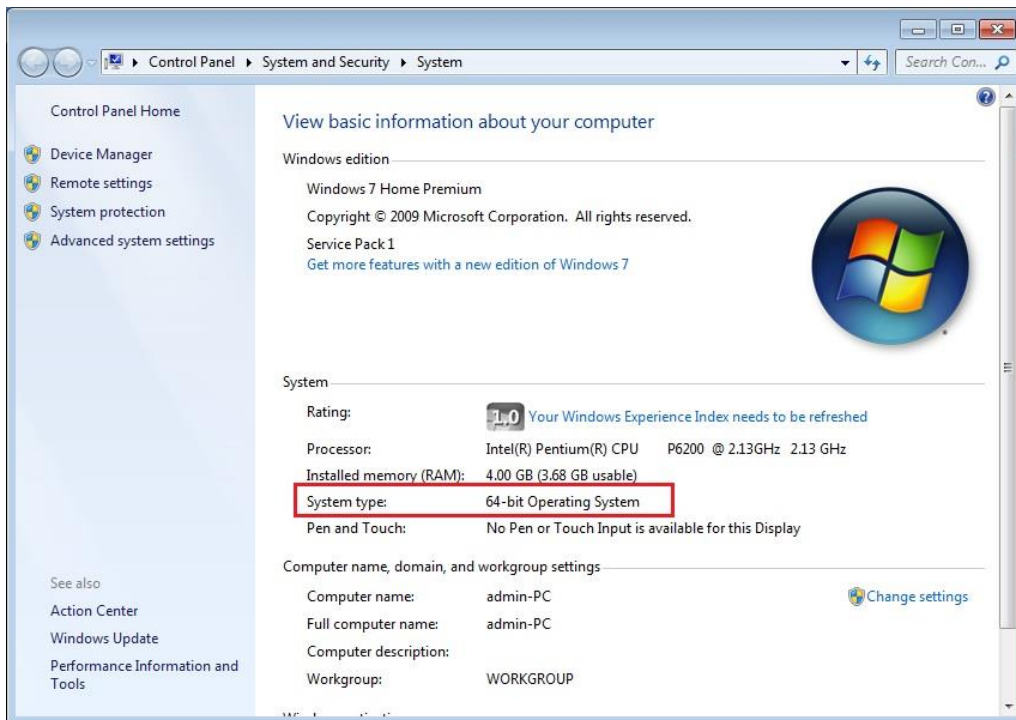
D(*5)\Tools\CleanUp\MPE720Ver7_x86.bat (32bitOS)

D(*5)\Tools\CleanUp\MPE720Ver7_x64.bat (64bitOS)

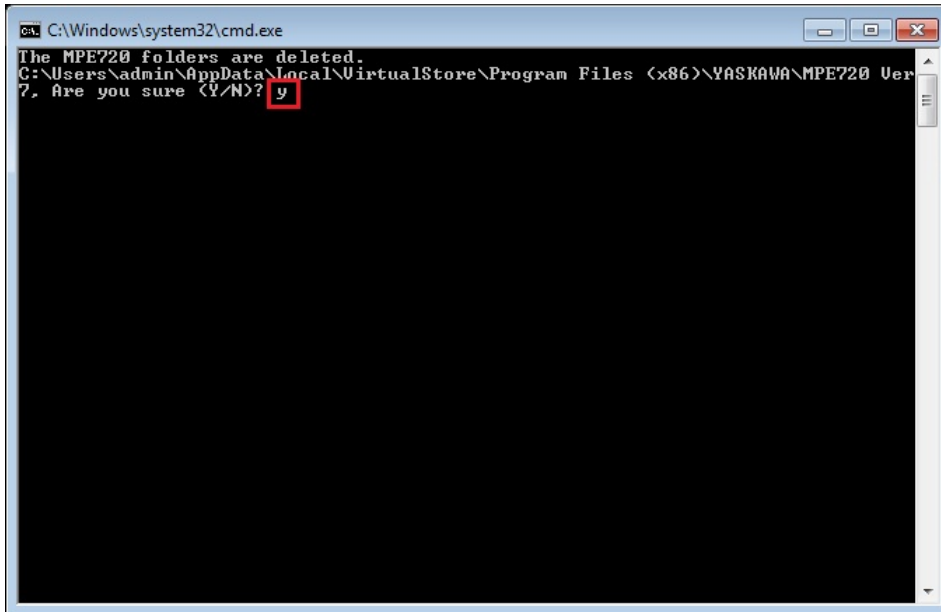
2. The copied batch file is performed.

MPE720Ver7_x86.bat (32bitOS)

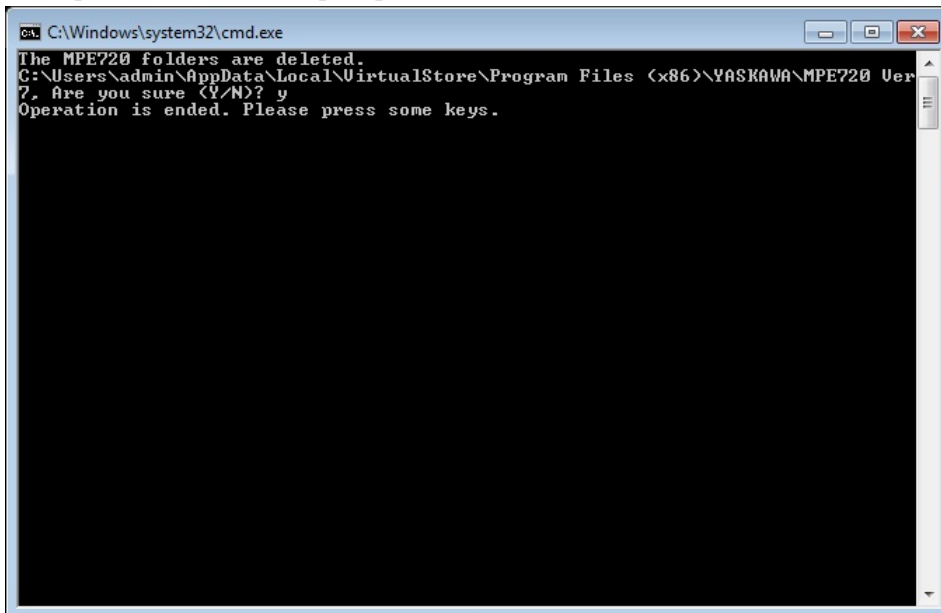
MPE720Ver7_x64.bat (64bitOS)



3. “y” is inputted on a command prompt and the Enter button is pushed.



4. The Enter button is pushed on a command prompt after deletion.



- (*1): When multi-user is using one set of PC, please operate it by each user.
- (*2): The user account name that logs in enters.
- (*3): The path changes by OS.
 - 32bitOS: Program Files
 - 64bitOS: Program Files (x86)
- (*4): The path changes by version.
- (*5): The path changes by DVD drive.
- (*6): When an installation path is changed at the time of MPE720 Ver.7 installation, please delete the “MPE720 Ver7” folder which a folder subordinate has below manually according to the installed path.
 - C:\Users\¥UserName(*2)\¥AppData\¥Local\¥VirtualStore

【About compile of the parallel circuit】

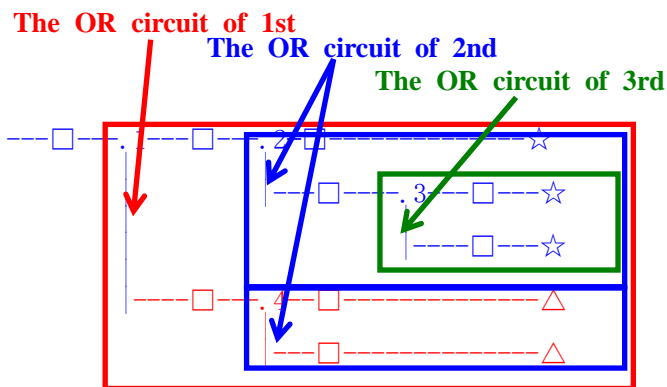
In the Ladder program of MPE720 Ver7 before MPE720 Ver7.23, when the parallel circuit is used, the following phenomena may occur.

<Phenomena>

When the circuit containing the following pattern was created, there was a phenomenon of operating without receiving the condition that the circuit below the OR circuit of 1st class must operate essentially in response to the conditional instruction before the OR circuit of 1st class.

<Measures>

When a phenomenon occurs, please carry out re-compile about the Ladder program in MPE720 Ver7 after MPE720 Ver7.24. Or please carry out again “Compile All Programs” of “Compile” menu.



The OR circuit of 1st class: The OR circuit branched from the bus-bar of language.

The OR circuit of 2nd class: The OR circuit branched out of the OR circuit of 1st class.

The OR circuit of 3rd class: The OR circuit branched out of the OR circuit of 2nd class.

□(Conditional instruction): NO Contact, NC Contact, Coil, instruction(==, !=, >, <), power line (-----) etc.

☆(Output instruction): Coil, Block instruction(Expression, STORE, COPYW) etc

※However, when all ☆ is coil commands, a phenomenon does not occur.

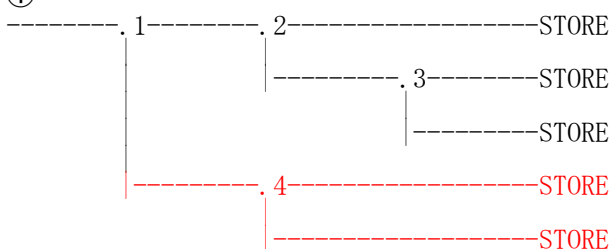
△(Output instruction): Coil, Block instruction(Expression, STORE, COPYW)etc

<Pattern>

Symbol	Instruction
	NO Contact
STORE	STORE instruction
()	Coil

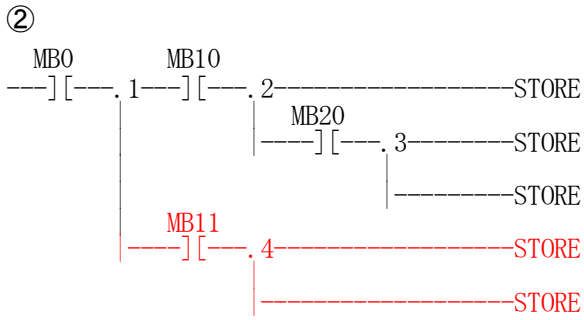
<NG Pattern>

①



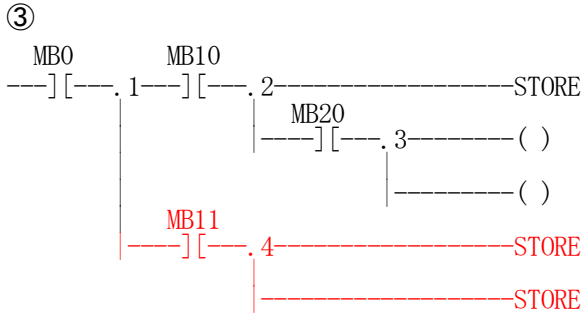
This pattern is minimum circuit pattern.

This is NG.



It is NG even if the minimum circuit pattern has conditional instructions (NO Contact etc.).

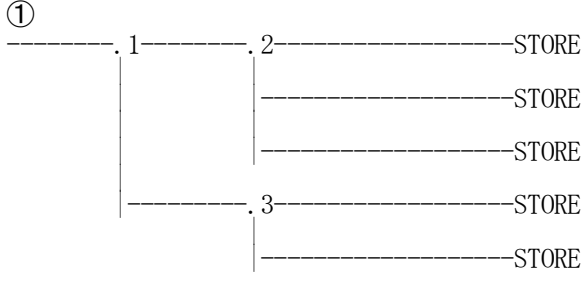
This is NG



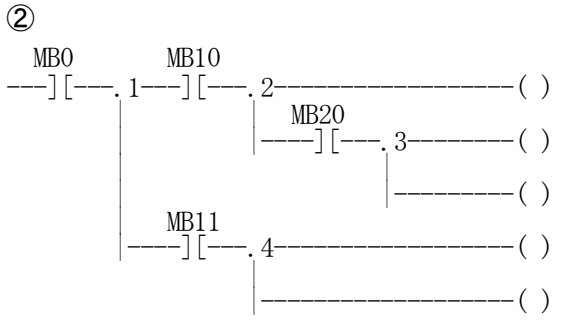
It is NG when there are at least one block commands (STORE command etc.) here.

This is NG

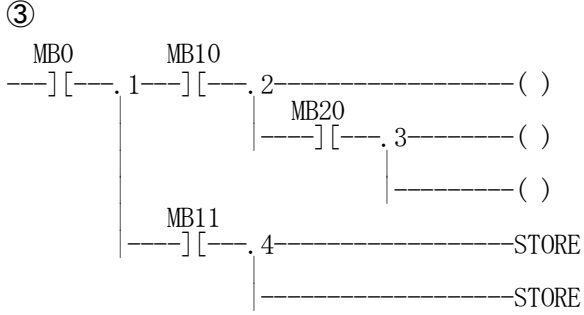
<OK Pattern>



Since it is the OR circuit of 2nd, it is OK.



Since it is the coil altogether, it is OK.



Since it is the coil altogether, it is OK.

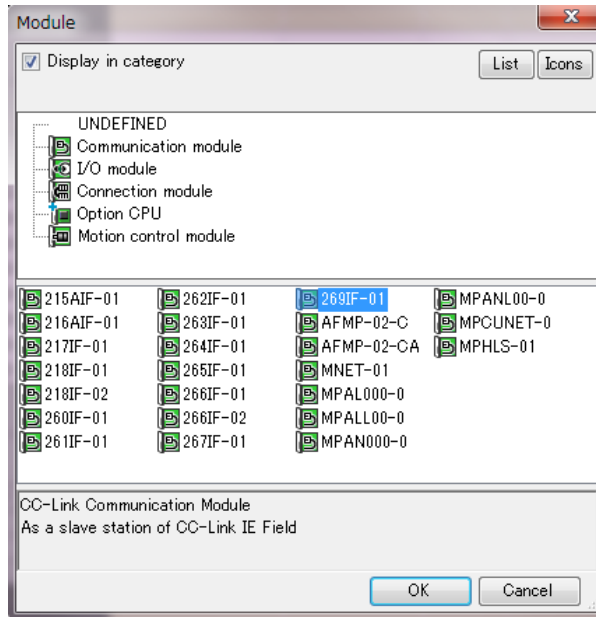
1.2 Past Upgrade Information

No.	Upgrade Information	Remarks
1	MPE720 version 7.11 upgrade information	version 7.10→version 7.11
2	MPE720 version 7.13 upgrade information	version 7.11→version 7.13
3	MPE720 version 7.14 upgrade information	version 7.13→version 7.14
4	MPE720 version 7.20 upgrade information	version 7.14→version 7.20
5	MPE720 version 7.21 upgrade information	version 7.20→version 7.21
6	MPE720 version 7.23 upgrade information	version 7.21→version 7.23
7	MPE720 version 7.24 upgrade information	version 7.23→version 7.24
8	MPE720 version 7.26 upgrade information	version 7.24→version 7.26
9	MPE720 version 7.27 upgrade information	version 7.26→version 7.27
10	MPE720 version 7.28 upgrade information	version 7.27→version 7.28
11	MPE720 version 7.29 upgrade information	version 7.28→version 7.29
12	MPE720 version 7.30 upgrade information	version 7.29→version 7.30
13	MPE720 version 7.31 upgrade information	version 7.30→version 7.31
14	MPE720 version 7.33 upgrade information	version 7.31→version 7.33
15	MPE720 version 7.34 upgrade information	version 7.33→version 7.34
16	MPE720 version 7.35 upgrade information	version 7.34→version 7.35
17	MPE720 version 7.36 upgrade information	version 7.35→version 7.36
18	MPE720 version 7.37 upgrade information	version 7.36→version 7.37
19	MPE720 version 7.38 upgrade information	version 7.37→version 7.38
20	MPE720 version 7.39 upgrade information	version 7.38→version 7.39

2. Description

No. 1 Added the 269IF-01 to the communication module.

Added the 269IF-01 module (CC-Link IE Field slave module) to the possible communication modules assigned to controller.



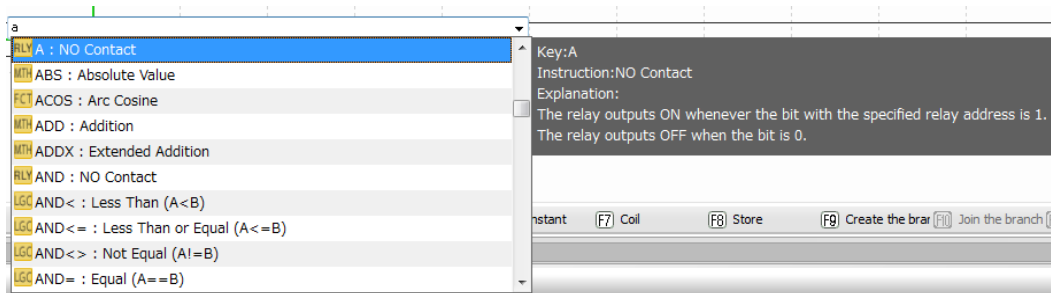
【Support Version】

○Controller

Controller	Support Version
MP3000 Series	Ver.1.32 or later.
Sigma-7C	It will be supported in a future version up.
MP2000 Series	Ver.3.02 or later.

No. 2 Enhanced the Ladder Instruction Auto Complete function.

When enter ladder instructions, added a function to pop up a description of each instruction.



【Support Version】

○Controller

Controller	Support Version
MP3000 Series	It is not dependent on the version.
Sigma-7C	It is not dependent on the version.
MP2000 Series	It is not dependent on the version.

No. 3 Improved the compilation processing of motion editor.

In online connection state, compiling error occurred when writing PFN instruction or PFP instruction immediately after the label of PFORK or SFORK instruction. So, improved so that PFN instruction or PFP instruction can be written and compiled immediately after the label of PFORK or SFORK instruction in online connection state.

【Support Version】

○Controller

Controller	Support Version
MP3000 Series	It is not dependent on the version.
Sigma-7C	It is not dependent on the version.
MP2000 Series	It is not dependent on the version.

No. 4 Improved the retry operation of communication.

In state that was setting number of retry in communication setting preference for more than 1, when a communication error occurred, retry communication was performed the set number of times regardless of the error content. When for this reason, ladder program that was not called with SEE instruction was unfolded, there was phenomenon that time takes. So, improved to perform retry communication only when a communication time-out error occurred.

【Support Version】

○Controller

Controller	Support Version
MP3000 Series	It is not dependent on the version.
Sigma-7C	It is not dependent on the version.
MP2000 Series	It is not dependent on the version.

No. 5 Improved the line break operation in comment on Expression instruction.

In Expression instruction, when line break(Enter) key was pressed on in comment section, semicolon was appended. So, improved so that did not insert ";(semicolon)" when line break was pressed within comments.

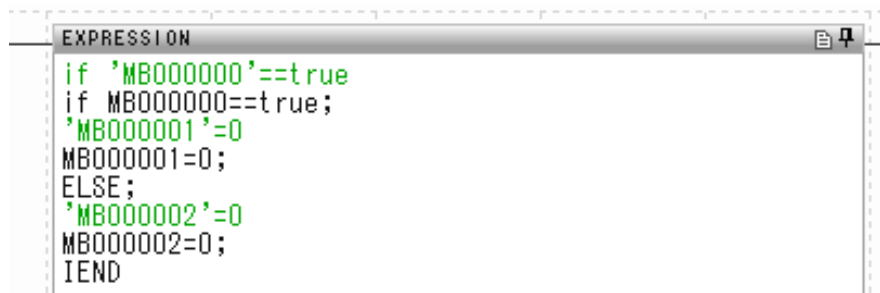
【Support Version】

○Controller

Controller	Support Version
MP3000 Series	It is not dependent on the version.
Sigma-7C	It is not dependent on the version.
MP2000 Series	It is not dependent on the version.

No. 6 Improved the register comment display function of Expression instruction.

In register comment display function of Expression instruction, else of IF-ELSE-IEND instruction was been displayed as register comments. So, in the register comment display function of Expression instruction, improved so that ELSE was excluded from comment target.



```
EXPRESSION
if 'MB000000'==true
if MB000000==true;
'MB000001'=0
MB000001=0;
ELSE;
'MB000002'=0
MB000002=0;
IEND
```

【Support Version】

○Controller

Controller	Support Version
MP3000 Series	It is not dependent on the version.
Sigma-7C	It is not dependent on the version.
MP2000 Series	It is not dependent on the version.

No. 7 Improved the display processing of save confirmation message in logging function.

In logging function, when opening each setting screen (format, file output, logging target, sampling & trigger) with the logging setting already done and closing each setting screen with the OK button, there was a phenomenon that a save confirmation message is displayed even if the setting was not changed.

So, improved to display save confirmation message only when setting was changed and OK button was pressed.

【Support Version】

○Controller

Controller	Support Version
MP3000 Series	It is not dependent on the version.
Sigma-7C	It is not dependent on the version.
MP2000 Series	It is not dependent on the version.

No. 8 Improved the transfer screen display process at using a multi display.

There was a phenomenon that the transfer screen was displayed in a portrait extension when displaying the MPE 720 on the sub display with the sub display being placed on the main display using the multi display and activating the transfer function. So, improved so that transfer screen displayed with normal size even when multi display was used.

【Support Version】

○Controller

Controller	Support Version
MP3000 Series	It is not dependent on the version.
Sigma-7C	It is not dependent on the version.
MP2000 Series	It is not dependent on the version.

No. 9 Improved the unit display at monitor parameter startup.

In following models, reference unit did not display according to settings of "OWxx03 bit0-3: Speed unit selection" at monitor parameter start. So, improved so that reference unit displayed according to settings of "OWxx03 bit0-3: Speed unit selection" at monitor parameter start.

- (M-II/M-III)Wild Card Servo
- (M-II/M-III)Wild Card Servo(Linear)
- (M-II/M-III)Wild Card SteppingMotorDRV

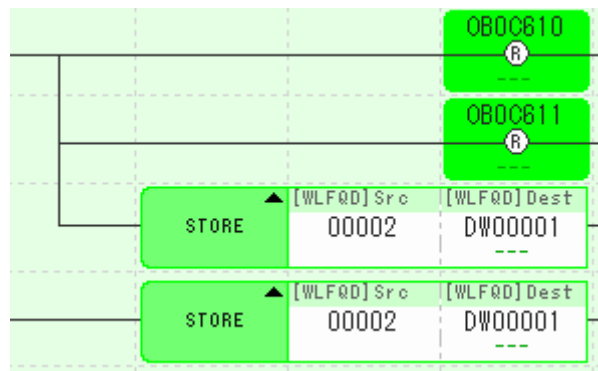
【Support Version】

○Controller

Controller	Support Version
MP3000 Series	It is not dependent on the version.
Sigma-7C	It is not dependent on the version.
MP2000 Series	It is not dependent on the version.

No. 10 Improved the display of ladder program.

In the ladder editor, there was a phenomenon that coils and operation instructions were displayed overlapping on notation. So, improved the drawing process of ladder editor.



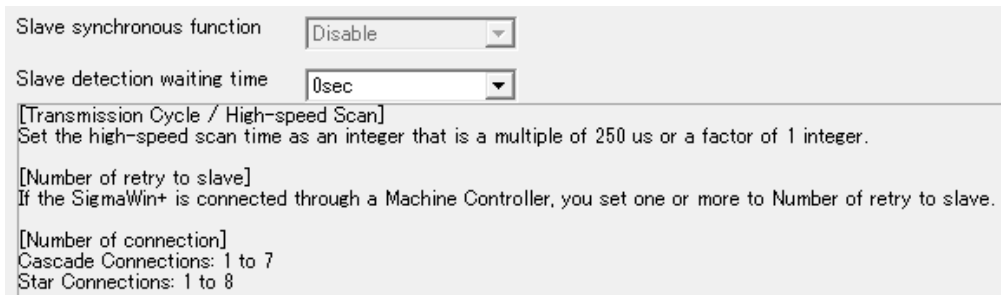
【Support Version】

○Controller

Controller	Support Version
MP3000 Series	It is not dependent on the version.
Sigma-7C	It is not dependent on the version.
MP2000 Series	It is not dependent on the version.

No. 11 Improved the wording on the detailed definition screen of SVC.

The number of connection that can be connected due to the difference in connection method (cascade / star) and the explanation about SigmaWin connection via the controller were not displayed on the detail definition screen of SVC. So, in detailed definition screen of SVC, added a description about "number of retry to slave" and "number of connection".



【Support Version】

○Controller

Controller	Support Version
MP3000 Series	It is not dependent on the version.
Sigma-7C	It is not dependent on the version.
MP2000 Series	It is not dependent on the version.

No. 12 Improved the display of S register comment.

In MP2000 series project file, S register comment of trace 4 was not displayed. So, improved to display Corresponding register comment.

【Corresponding register comment】

SB000983 : Data Trace Definition Existence (Group4)

SB000993 : Data Trace Execution Status (Group4)

SW00103 : Group 4 Record No.

【Support Version】

○Controller

Controller	Support Version
MP3000 Series	It is not dependent on the version.
Sigma-7C	It is not dependent on the version.
MP2000 Series	It is not dependent on the version.