

Upgrade Information of MPE720 Version 7.37

1. Added and Improved Functions

1.1 Version 7.37 Upgrade Information

Items added and features improved from MPE720 version 7.36 to version 7.37 are as follows.

No.	Feature	Classification
1	SigmaWin+ fusion function was supported.	Functional Enhancement
2	We added a controller within SERVOPACK Sigma-7C to MPE720.	New Function
3	We added MultiWindings Drive System (SGD7N-****22*).	New Function
4	We improved the maximum nest number of Expression and other instructions.	Improvement
5	We improved the trigger setting of Realtime trace.	Improvement
6	We improved the error that could not start MC-Configurator with Turkish.	Improvement
7	We improved the menu of Engineering builder.	Improvement
8	We improved the cross reference of Engineering builder.	Improvement
9	We improved the printing function.	Improvement

(*): When MPE720 Ver.7 before MPE720 Ver.7.11 is already installed in Windows Vista and Windows 7, it may not operate for the newest information of the servo model addition by the axial setup wizard function (the newest information added into the database) updated by after MPE720 Ver.7.13.

Please refer to the following page for operating procedures.

【About the restriction matter when using MPE720 Ver.7 in Windows Vista and Windows 7】

When MPE720 Ver.7 is used in Windows Vista and Windows 7, the following phenomena might be generated.

<Phenomena>

When MPE720 Ver.7 before MPE720 Ver.7.11 is already installed in Windows Vista and Windows 7, it may not operate for the newest information of the servo model addition by the axial setup wizard function (the newest information added into the database) updated by after MPE720 Ver.7.13.

<Measures>

Using a batch file, the following folder is deleted. (*1)

C:\Users\UserName(*2)\AppData\Local\VirtualStore\Program Files(*3)\YASKAWA\MPE720 Ver7

Procedure

1. The batch file enclosed by MPE720 Ver.7 installer is copied to a desktop.

【Download Version】

MPE720Ver7_xxx(*4)\Tools\CleanUp\MPE720Ver7_x86.bat (32bitOS)

MPE720Ver7_xxx(*4)\Tools\CleanUp\MPE720Ver7_x64.bat (64bitOS)

【DVD Media Version】

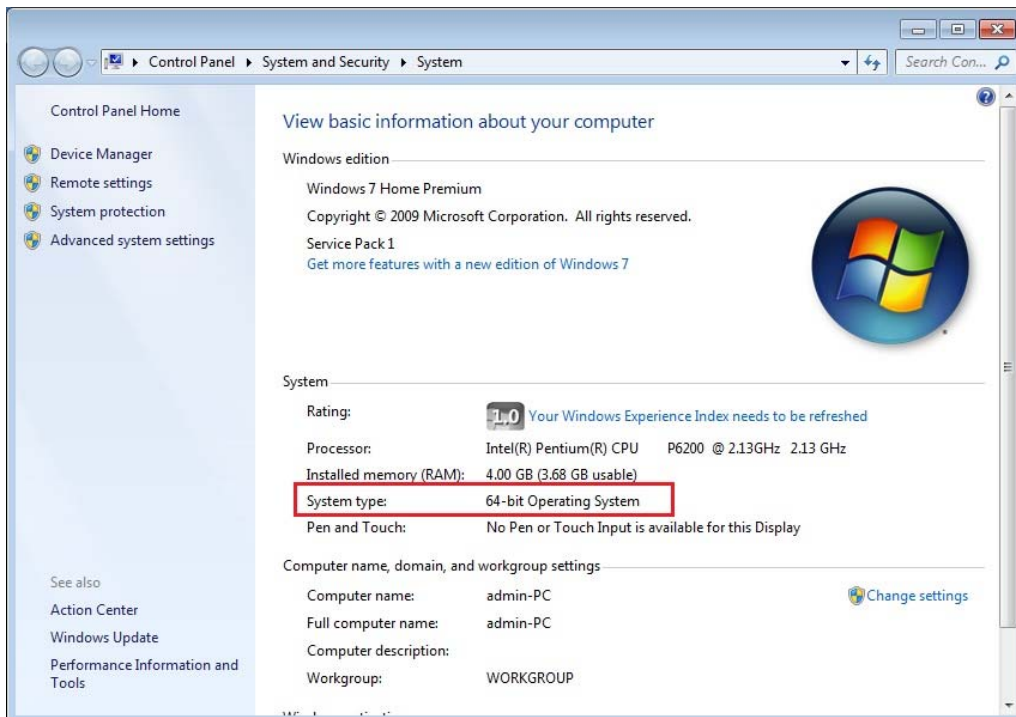
D(*5):\Tools\CleanUp\MPE720Ver7_x86.bat (32bitOS)

D(*5):\Tools\CleanUp\MPE720Ver7_x64.bat (64bitOS)

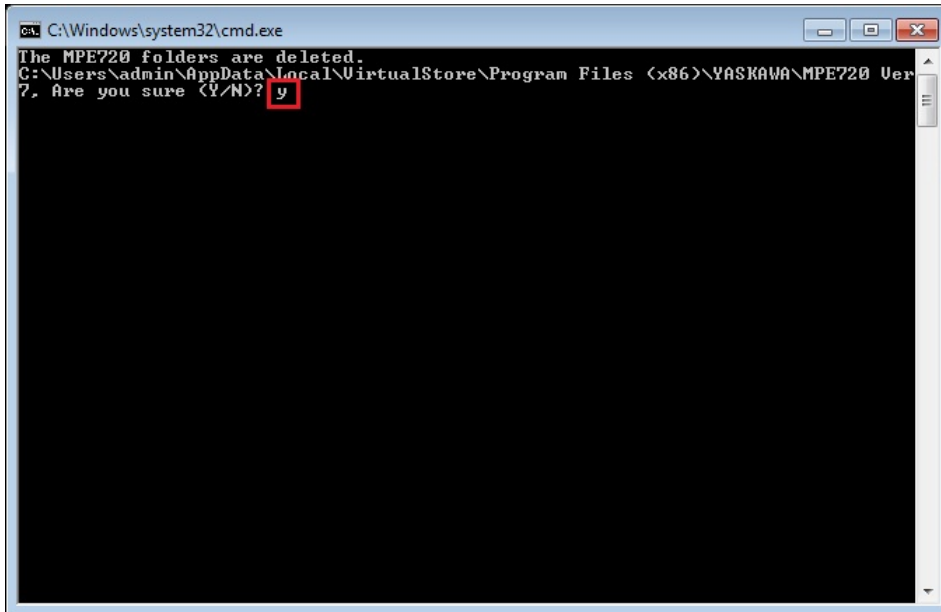
2. The copied batch file is performed.

MPE720Ver7_x86.bat (32bitOS)

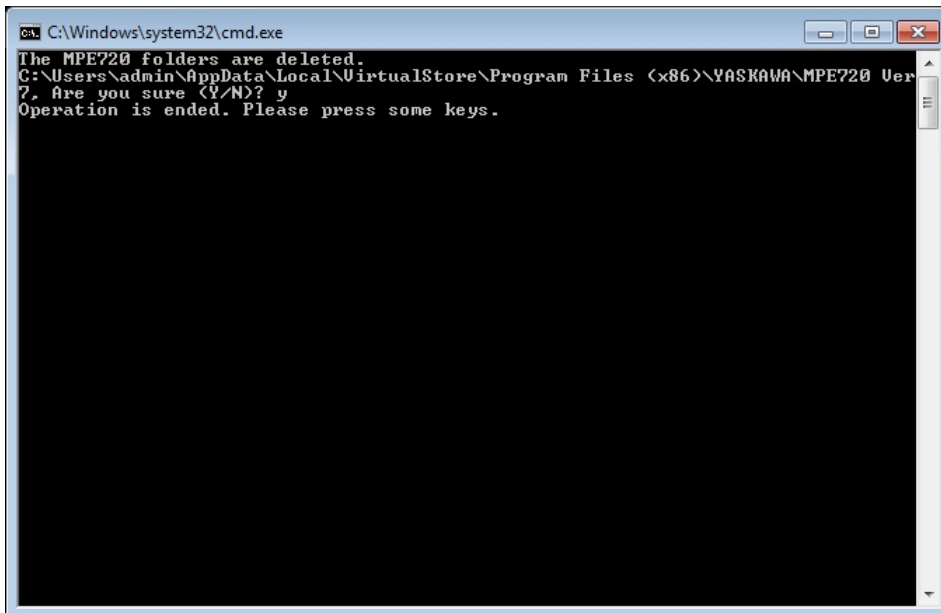
MPE720Ver7_x64.bat (64bitOS)



3. "y" is inputted on a command prompt and the Enter button is pushed.



4. The Enter button is pushed on a command prompt after deletion.



- (*1): When multi-user is using one set of PC, please operate it by each user.
- (*2): The user account name that logs in enters.
- (*3): The path changes by OS.
 - 32bitOS: Program Files
 - 64bitOS: Program Files (x86)
- (*4): The path changes by version.
- (*5): The path changes by DVD drive.
- (*6): When an installation path is changed at the time of MPE720 Ver.7 installation, please delete the "MPE720 Ver7" folder which a folder subordinate has below manually according to the installed path.
 - C:\Users¥UserName(*2)\AppData\Local\VirtualStore

【About compile of the parallel circuit】

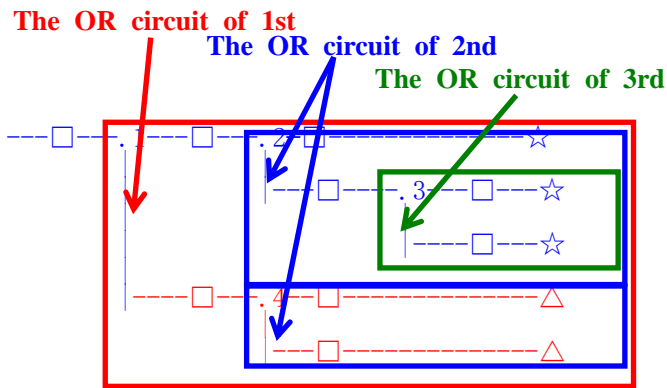
In the Ladder program of MPE720 Ver7 before MPE720 Ver7.23, when the parallel circuit is used, the following phenomena may occur.

<Phenomena>

When the circuit containing the following pattern was created, there was a phenomenon of operating without receiving the condition that the circuit below the OR circuit of 1st class must operate essentially in response to the conditional instruction before the OR circuit of 1st class.

<Measures>

When a phenomenon occurs, please carry out re-compile about the Ladder program in MPE720 Ver7 after MPE720 Ver7.24. Or please carry out again “Compile All Programs” of “Compile” menu.



The OR circuit of 1st class: The OR circuit branched from the bus-bar of language.

The OR circuit of 2nd class: The OR circuit branched out of the OR circuit of 1st class.

The OR circuit of 3rd class: The OR circuit branched out of the OR circuit of 2nd class.

□(Conditional instruction): NO Contact, NC Contact, Coil, instruction(==, !=, >, <), power line (-----) etc.

☆(Output instruction): Coil, Block instruction(Expression, STORE, COPYW) etc

※However, when all ☆ is coil commands, a phenomenon does not occur.

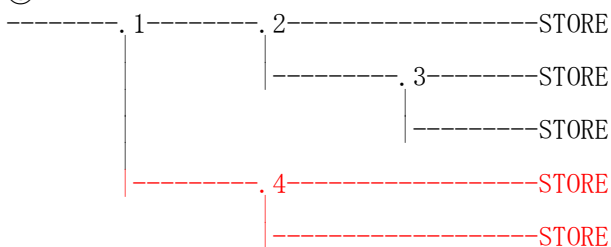
△(Output instruction): Coil, Block instruction(Expression, STORE, COPYW)etc

<Pattern>

Symbol	Instruction
	NO Contact
STORE	STORE instruction
()	Coil

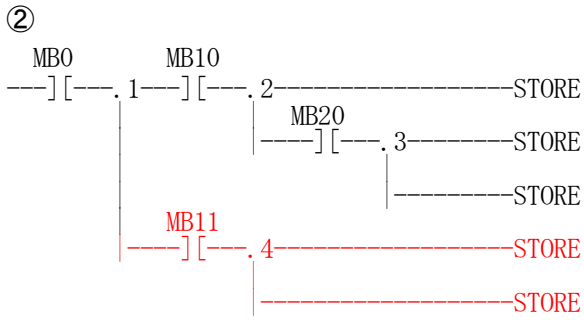
<NG Pattern>

①



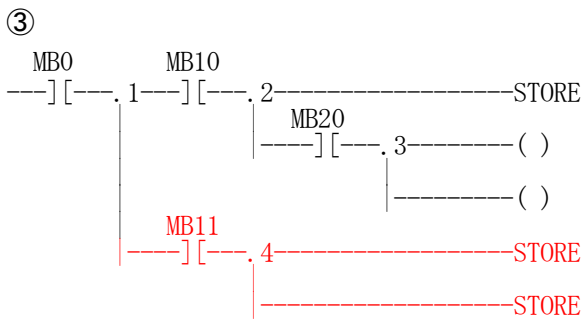
This pattern is minimum circuit pattern.

This is NG.



It is NG even if the minimum circuit pattern has conditional instructions (NO Contact etc.).

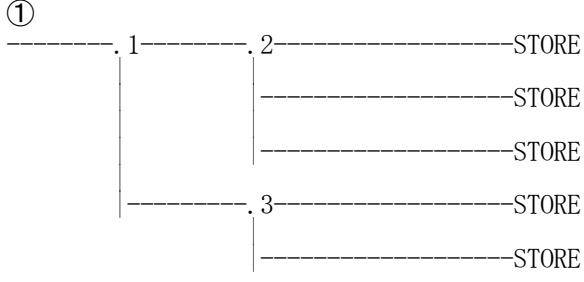
This is NG



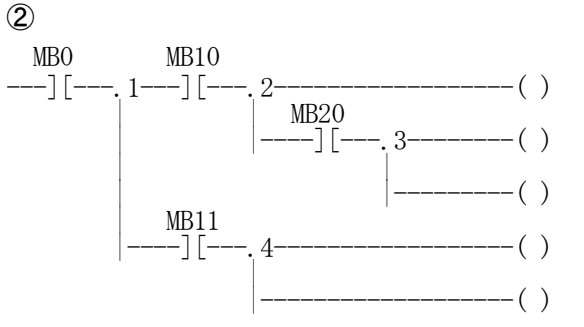
It is NG when there are at least one block commands (STORE command etc.) here.

This is NG

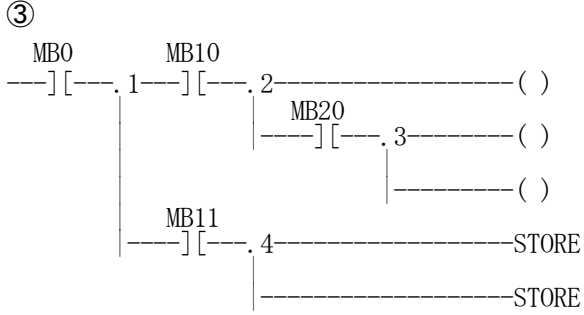
<OK Pattern>



Since it is the OR circuit of 2nd, it is OK.



Since it is the coil altogether, it is OK.



Since it is the coil altogether, it is OK.

1.2 Past Upgrade Information

No.	Upgrade Information	Remarks
1	MPE720 version 7.11 upgrade information	version 7.10→version 7.11
2	MPE720 version 7.13 upgrade information	version 7.11→version 7.13
3	MPE720 version 7.14 upgrade information	version 7.13→version 7.14
4	MPE720 version 7.20 upgrade information	version 7.14→version 7.20
5	MPE720 version 7.21 upgrade information	version 7.20→version 7.21
6	MPE720 version 7.23 upgrade information	version 7.21→version 7.23
7	MPE720 version 7.24 upgrade information	version 7.23→version 7.24
8	MPE720 version 7.26 upgrade information	version 7.24→version 7.26
9	MPE720 version 7.27 upgrade information	version 7.26→version 7.27
10	MPE720 version 7.28 upgrade information	version 7.27→version 7.28
11	MPE720 version 7.29 upgrade information	version 7.28→version 7.29
12	MPE720 version 7.30 upgrade information	version 7.29→version 7.30
13	MPE720 version 7.31 upgrade information	version 7.30→version 7.31
14	MPE720 version 7.33 upgrade information	version 7.31→version 7.33
15	MPE720 version 7.34 upgrade information	version 7.33→version 7.34
16	MPE720 version 7.35 upgrade information	version 7.34→version 7.35
17	MPE720 version 7.36 upgrade information	version 7.35→version 7.36

2. Description

No. 1 SigmaWin+ fusion function was supported.

It has realized the function cooperation of MPE720Ver.7 and SimgaWin + Ver.7.

※To use those functions, you have to install SigmaWin+ Ver7.13 or more.

Moreover, the OS of PC is necessary OS since Windows 7.

1. About the SERVOPACK of the following series, you were modified to use the functions of SigmaWin+ Ver.7.

○The target model

- Sigma-5 series

- Sigma-7 series

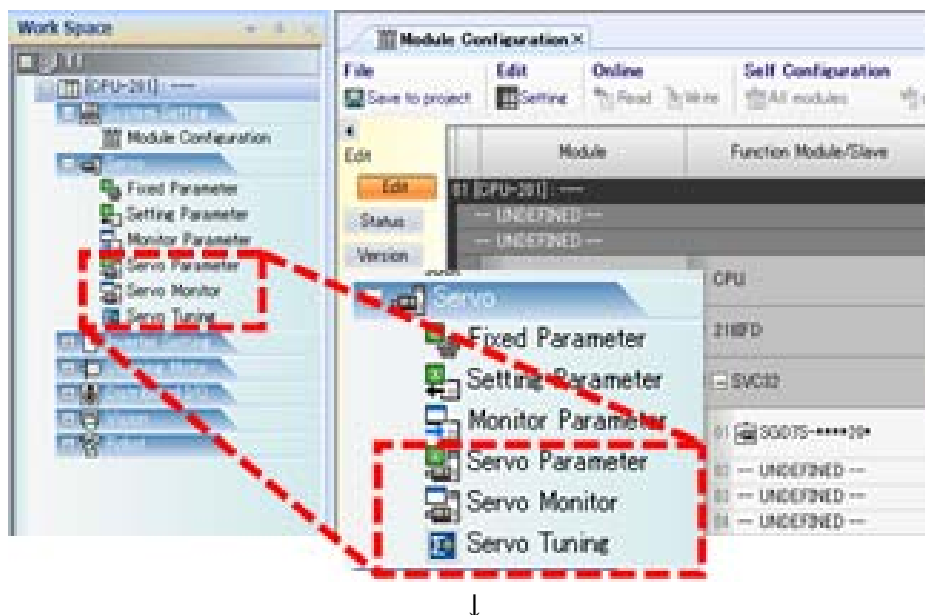
※You could edit about the model before the series of Sigma-3 on the servo parameter screen of MC-Configurator.

○The function of SigmaWin+ Ver.7

- Servo parameters

- Servo monitor

- Servo tuning



Edit Parameters

Category

- All constant number
- Function Selection(Pn0xx-)
- Gain(Pn1xx-)
- Position(Pn2xx-)
- Speed(Pn3xx-)
- Torque(Pn4xx-)
- Sequence(Pn5xx-)
- I/O Sign
- Mechatrolink(Pn8xx-)
- Common Parameters(PnAxx-)

Display Settings

Hierarchy: off

Descriptions: on

MPE720

Read Write File

No.	Name	Unit	SGD7S-****20* Axis0101
Pn000.0	Direction Selection	-	0 : Use CCW as t...
Pn000.1	Reserved parameter (Do not chang	-	0 : Reserved para...
Pn000.2	Reserved parameter (Do not chang	-	0 : Reserved para...
Pn000.3	Rotary/Linear Startup Selection Wh	-	0 : Start as a rota...
Pn001.0	Servo OFF or Alarm Group 1 Stoppi	-	0 : Stop the moto...
Pn001.1	Overtravel Stopping Method	-	0 : Apply the dyn...
Pn001.2	Main Circuit Power Supply AC/DC Ir	-	0 : Input AC pow...
Pn001.3	Reserved parameter (Do not chang	-	0 : Reserved para...
Pn002.0	MECHATROLINK Command Position	-	1 : Use TLIM as t...
Pn002.1	Torque Control Option	-	1 : Use the speed...
Pn002.2	Absolute Encoder Usage	-	0 : Use the absol...

2. We also executed the following improvements.
- Enable to select axis from Work Space.



- SigmaWin+ Ver5 launcher is not displayed in default setting.
- ※ We will support the launcher that calls SigmaWin+ Ver.7 in the future.

【Support Version】

Controller	Support Version
MP3000 Series	It is not dependent on the version.
MP2000 Series	It is not dependent on the version.

No. 2 We added a controller within SERVOPACK Sigma-7C to MPE720.

It changed the following function for Sigma-7C specification.

1. Motion module SVD

Printing function.

Modification of motion parameters (SVC -> SVD),

Numeber	SVC	SVD
OWxx06	M-III Vender Specific Servo Command Output Signal	Servo Command Output Signal
ILxx28	M-III Servo Command Input Signal monitor	Servo Command Input Signal monitor
ILxx2A	M-III Servo Command Status	Not display
ILxx2C	M-III Command Status	Not display

2. SVC4

You can set maximum 4 axis (servo, inverter, stepper).

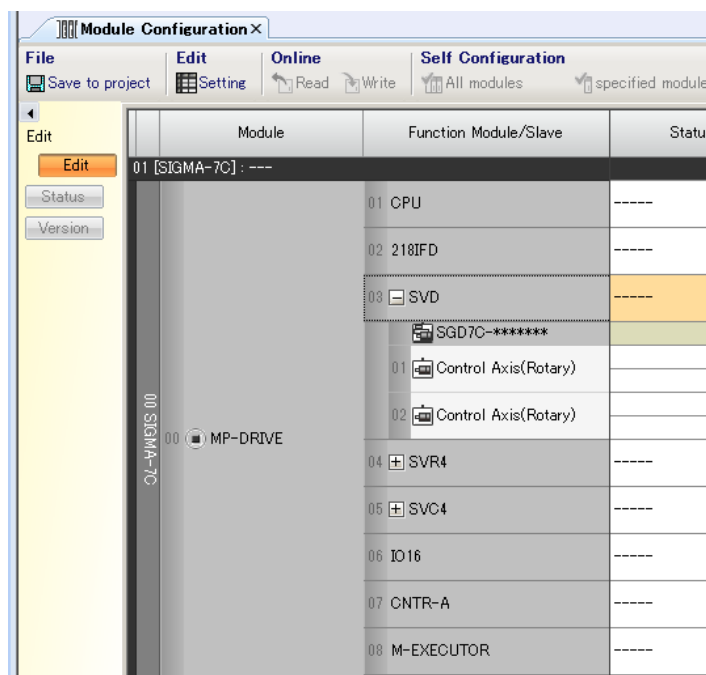
(You can also 8 salves)

3. SVR4

You can set maximum 4 axis.

4. IO16

Enable to set digital filter.



【Support Version】

Controller	Support Version
Sigma-7C (MP3000 Series)	Ver.1.00 or later
MP2000 Series	MP2000 series is not applicable.

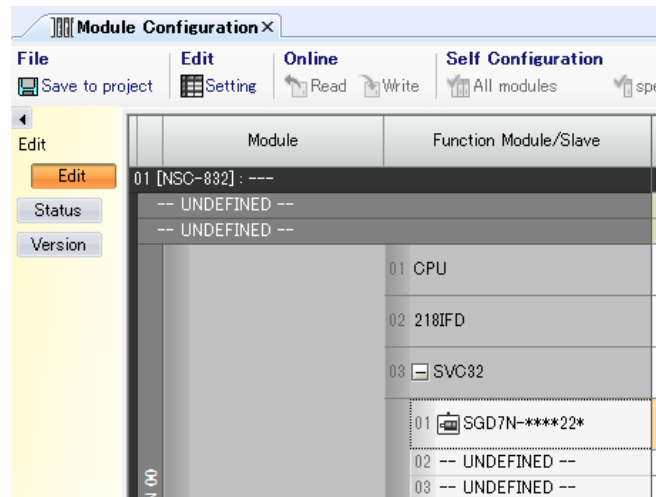
No. 3 We added MultiWindings Drive System (SGD7N-****22*).

It supported about the following SERVOPACK.

- MECHATROLINK-III Communication References MultiWindings Drive System
SGD7N-****22* (M-III Σ-7)

1. Module Configuration

In the Module Configuration, it changed so that the MECHATROLINK-III Communication References MultiWindings Drive System could be assigned.



2. Fixed, Setting, Monitor Parameter

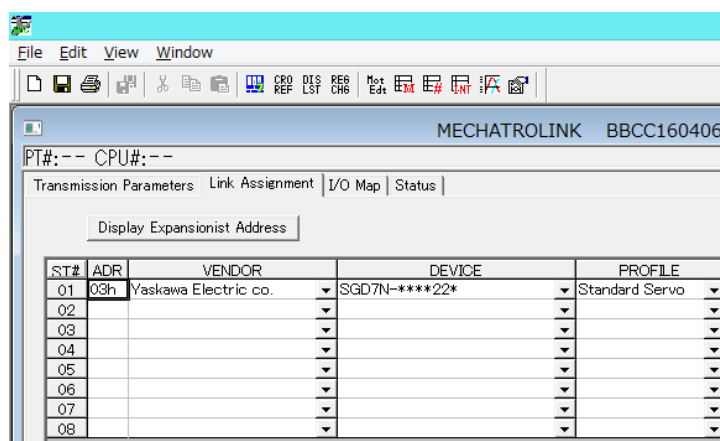
The screen for carrying out a detailed setup of Fixed Parameters, Setting Parameters and Monitor Parameters of the MECHATROLINK-III Communication References MultiWindings Drive System were added.

3. Axis variable

Axis variables of SGD7N-****22* were added.

4. Engineering builder

In the Module Configuration of Engineering builder, it changed so that MECHATROLINK-III Communication References MultiWindings Drive System could be assigned.



【Support Version】

Controller	Support Version
MP3000 Series	It is not dependent on the version.
MP2000 Series	It is not dependent on the version.

No. 4 We improved the maximum nest number of Expression and other instructions.

The hierarchy of IF instruction is maximum eight. But if you compile a program that has Expression with eight hierarchy IF instruction and condition instruction like IF or NO contact except Expression, there is no compile error.

So, we improved the process so that the compile error occur in the case.

【Support Version】

Controller	Support Version
MP3000 Series	It is not dependent on the version.
MP2000 Series	It is not dependent on the version.

No. 5 We improved the trigger setting of Realtime trace.

In the screen of sampling & trigger setting of Realtime trace, if you input the setting value of max measuring time of tracing time after trigger from keyboard directly, the setting value become the 1/10. So, we improved the process.

【Support Version】

Controller	Support Version
MP3000 Series	It is not dependent on the version.
MP2000 Series	It is not dependent on the version.

No. 6 We improved the error that could not start MC-Configurator with Turkish.

When you set the language to Turkish in Region and Language of Control Panel (OS: English), you can't start MC-Configurator. So, we have improved MC-Configurator could start when you set the language to Turkish in Region and Language of Control Panel.

【Support Version】

Controller	Support Version
MP3000 Series	It is not dependent on the version.
MP2000 Series	It is not dependent on the version.

No. 7 We improved the menu of Engineering builder.

When you open the CP ladder editor of MP3000 project file, there is no Quick Reference in the View menu items of Engineering builder. So, we improved that the Quick Reference is also enabled when using CP ladder.

【Support Version】

Controller	Support Version
MP3000 Series	It is not dependent on the version.
MP2000 Series	It is not dependent on the version.

No. 8 We improved the cross reference of Engineering builder.

In the case of using MOVW in new ladder and using array register for the parameter of MOVW, if you use cross reference of Engineering builder, you can't execute the function because the inside error occurred. So, we improved the process so that the array register used in the instruction MP2000 compatible is skipped and not searched.

【Support Version】

Controller	Support Version
MP3000 Series	It is not dependent on the version.
MP2000 Series	It is not dependent on the version.

No. 9 We improved the printing function.

If you execute printing from print builder in the project file existing more than 512 user functions, you can't print because the cross information error occurred. So, we improved the maximum number of user function change 512 to 2560 in the process of creating cross information.

【Support Version】

Controller	Support Version
MP3000 Series	It is not dependent on the version.
MP2000 Series	It is not dependent on the version.