

## Upgrade Information of MPE720 Version 7.35

### 1. Added and Improved Functions

#### 1.1 Version 7.35 Upgrade Information

Items added and features improved from MPE720 version 7.34 to version 7.35 are as follows.

No.	Feature	Classification
1	The possible modules assigned to SVC module was added the IO3100 module. (24VDC,16-point input, output)	Add function
2	The possible modules assigned to MP3000 series controller was added the MNET-01 module.	Add function
3	We improved import function of constant variable.	Functional enhancement
4	If the detail definition of SVB or SVC was changed and written, a confirmation message added to display.	Functional enhancement
5	We improved the operation at the time of save to flash.	Functional enhancement
6	We improved a phenomenon that cannot be started MPE720Ver.7 when it opened the specific project file with the specific PC.	Improvement
7	We improved the phenomenon that erroneously recognized the variable in the ladder program.	Improvement
8	We improved the operation of compiler of the motion program.	Improvement
9	We changed the maximum number of retry of the communication settings of the environment setting screen.	Improvement
10	We improved the operation of cross-reference function.	Improvement
11	We added the variables and the comments that added to MP3000 series for system register.	Improvement

(\*): When MPE720 Ver.7 before MPE720 Ver.7.11 is already installed in Windows Vista and Windows 7, it may not operate for the newest information of the servo model addition by the axial setup wizard function (the newest information added into the database) updated by after MPE720 Ver.7.13.

Please refer to the following page for operating procedures.

## 【About the restriction matter when using MPE720 Ver.7 in Windows Vista and Windows 7】

When MPE720 Ver.7 is used in Windows Vista and Windows 7, the following phenomena might be generated.

### <Phenomena>

When MPE720 Ver.7 before MPE720 Ver.7.11 is already installed in Windows Vista and Windows 7, it may not operate for the newest information of the servo model addition by the axial setup wizard function (the newest information added into the database) updated by after MPE720 Ver.7.13.

### <Measures>

Using a batch file, the following folder is deleted. (\*1)

C:\Users\UserName(\*2)\AppData\Local\VirtualStore\Program Files(\*3)\YASKAWA\MPE720 Ver7

### Procedure

1. The batch file enclosed by MPE720 Ver.7 installer is copied to a desktop.

#### 【Download Version】

MPE720Ver7\_xxx(\*4)\Tools\CleanUp\MPE720Ver7\_x86.bat (32bitOS)

MPE720Ver7\_xxx(\*4)\Tools\CleanUp\MPE720Ver7\_x64.bat (64bitOS)

#### 【DVD Media Version】

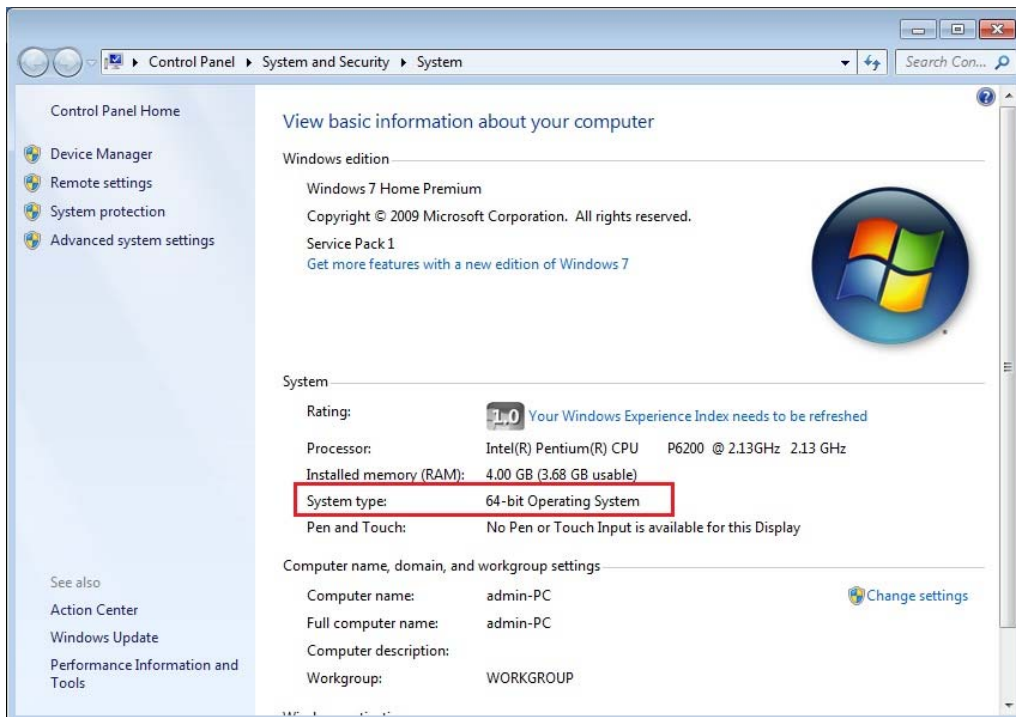
D(\*5):\Tools\CleanUp\MPE720Ver7\_x86.bat (32bitOS)

D(\*5):\Tools\CleanUp\MPE720Ver7\_x64.bat (64bitOS)

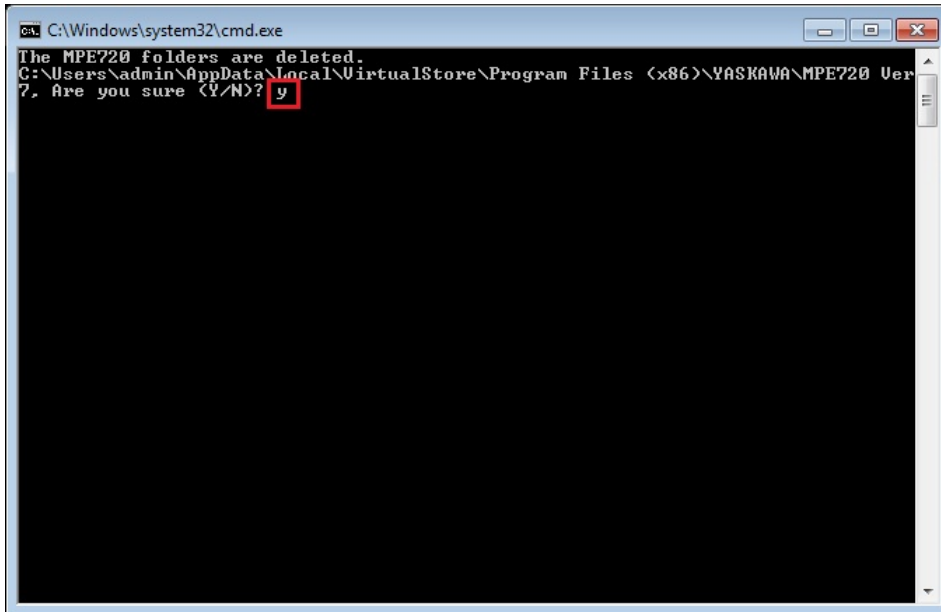
2. The copied batch file is performed.

MPE720Ver7\_x86.bat (32bitOS)

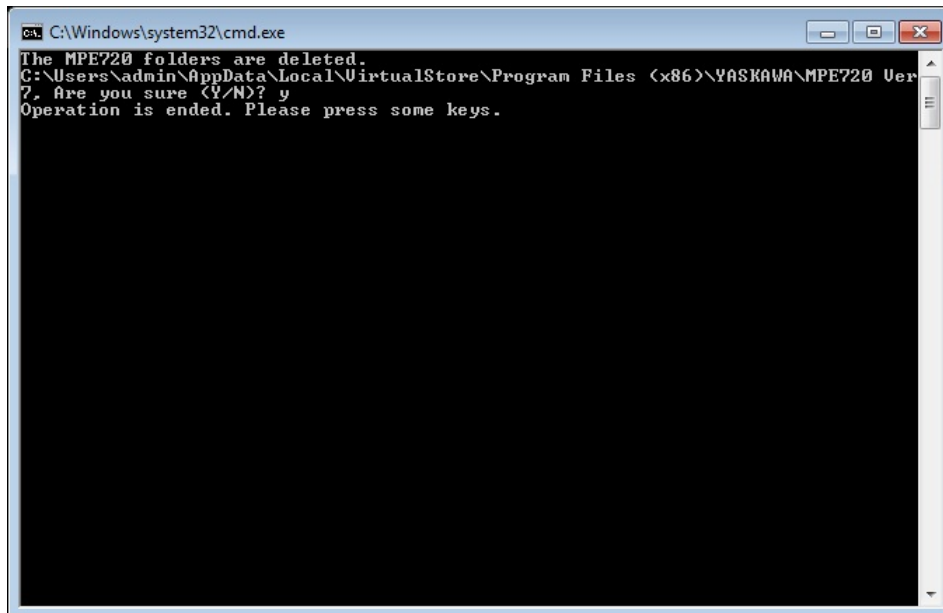
MPE720Ver7\_x64.bat (64bitOS)



3. “y” is inputted on a command prompt and the Enter button is pushed.



4. The Enter button is pushed on a command prompt after deletion.



- (\*1): When multi-user is using one set of PC, please operate it by each user.
- (\*2): The user account name that logs in enters.
- (\*3): The path changes by OS.
  - 32bitOS: Program Files
  - 64bitOS: Program Files (x86)
- (\*4): The path changes by version.
- (\*5): The path changes by DVD drive.
- (\*6): When an installation path is changed at the time of MPE720 Ver.7 installation, please delete the “MPE720 Ver7” folder which a folder subordinate has below manually according to the installed path.
  - C:\Users¥UserName(\*2)\AppData\Local\VirtualStore

## 【About compile of the parallel circuit】

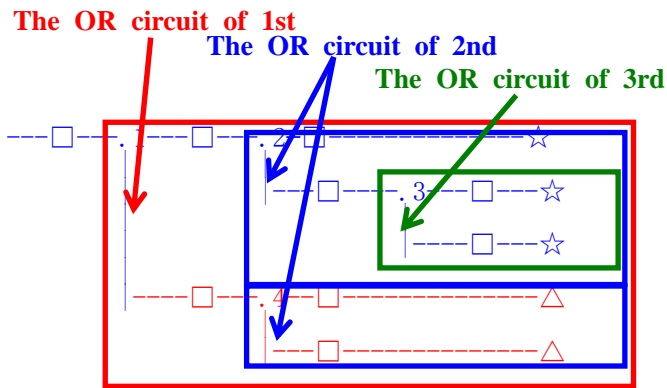
In the Ladder program of MPE720 Ver7 before MPE720 Ver7.23, when the parallel circuit is used, the following phenomena may occur.

### <Phenomena>

When the circuit containing the following pattern was created, there was a phenomenon of operating without receiving the condition that the circuit below the OR circuit of 1<sup>st</sup> class must operate essentially in response to the conditional instruction before the OR circuit of 1<sup>st</sup> class.

### <Measures>

When a phenomenon occurs, please carry out re-compile about the Ladder program in MPE720 Ver7 after MPE720 Ver7.24. Or please carry out again “Compile All Programs” of “Compile” menu.



The OR circuit of 1st class: The OR circuit branched from the bus-bar of language.

The OR circuit of 2nd class: The OR circuit branched out of the OR circuit of 1st class.

The OR circuit of 3rd class: The OR circuit branched out of the OR circuit of 2nd class.

□(Conditional instruction): NO Contact, NC Contact, Coil, instruction(==, !=, >, <), power line (-----) etc.

☆(Output instruction): Coil, Block instruction(Expression, STORE, COPYW) etc

※However, when all ☆ is coil commands, a phenomenon does not occur.

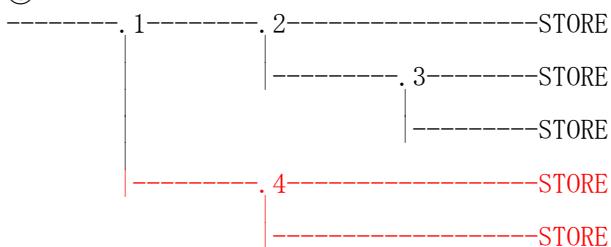
△(Output instruction): Coil, Block instruction(Expression, STORE, COPYW)etc

### <Pattern>

Symbol	Instruction
	NO Contact
STORE	STORE instruction
()	Coil

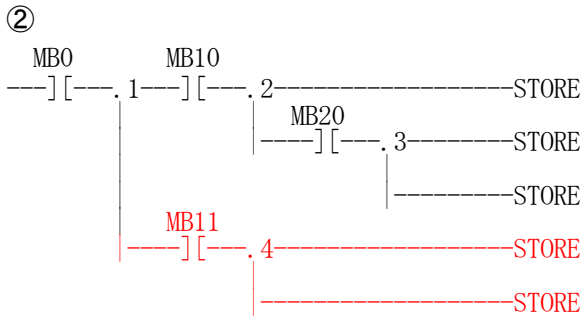
### <NG Pattern>

①



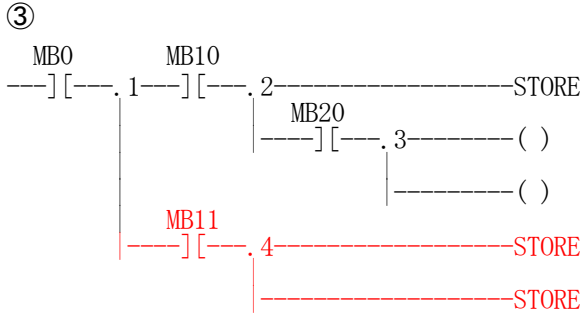
This pattern is minimum circuit pattern.

This is NG.



It is NG even if the minimum circuit pattern has conditional instructions (NO Contact etc.).

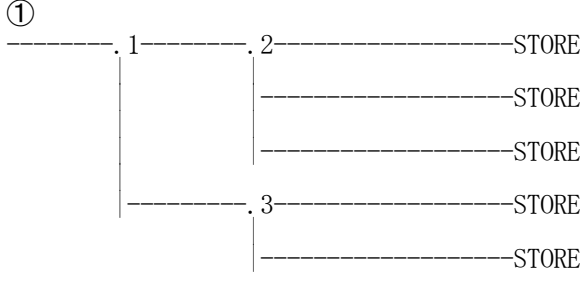
This is NG



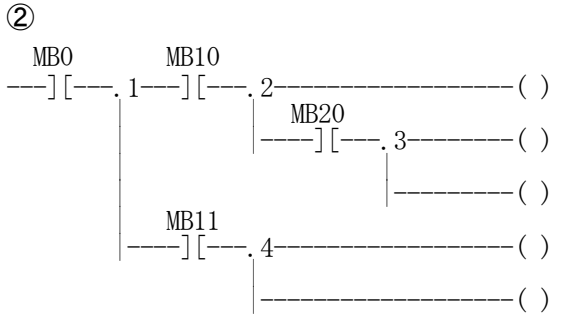
It is NG when there are at least one block commands (STORE command etc.) here.

This is NG

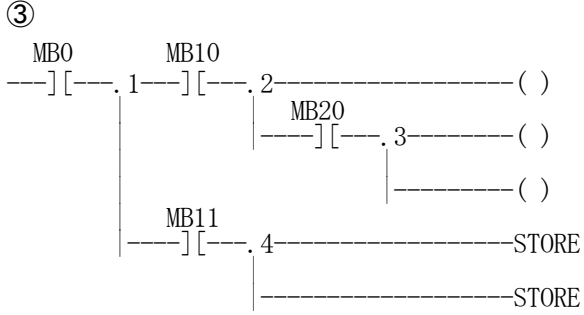
<OK Pattern>



Since it is the OR circuit of 2nd, it is OK.



Since it is the coil altogether, it is OK.



Since it is the coil altogether, it is OK.

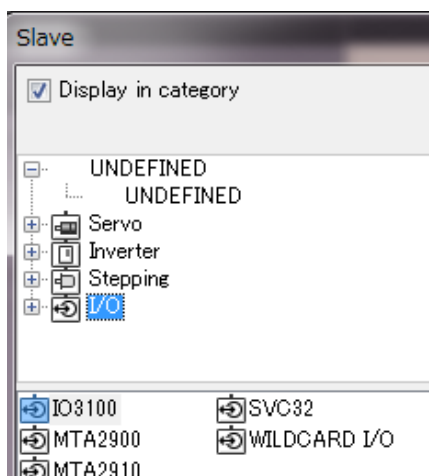
## 1.2 Past Upgrade Information

No.	Upgrade Information	Remarks
1	<a href="#">MPE720 version 7.11 upgrade information</a>	version 7.10→version 7.11
2	<a href="#">MPE720 version 7.13 upgrade information</a>	version 7.11→version 7.13
3	<a href="#">MPE720 version 7.14 upgrade information</a>	version 7.13→version 7.14
4	<a href="#">MPE720 version 7.20 upgrade information</a>	version 7.14→version 7.20
5	<a href="#">MPE720 version 7.21 upgrade information</a>	version 7.20→version 7.21
6	<a href="#">MPE720 version 7.23 upgrade information</a>	version 7.21→version 7.23
7	<a href="#">MPE720 version 7.24 upgrade information</a>	version 7.23→version 7.24
8	<a href="#">MPE720 version 7.26 upgrade information</a>	version 7.24→version 7.26
9	<a href="#">MPE720 version 7.27 upgrade information</a>	version 7.26→version 7.27
10	<a href="#">MPE720 version 7.28 upgrade information</a>	version 7.27→version 7.28
11	<a href="#">MPE720 version 7.29 upgrade information</a>	version 7.28→version 7.29
12	<a href="#">MPE720 version 7.30 upgrade information</a>	version 7.29→version 7.30
13	<a href="#">MPE720 version 7.31 upgrade information</a>	version 7.30→version 7.31
14	<a href="#">MPE720 version 7.33 upgrade information</a>	version 7.31→version 7.33
15	<a href="#">MPE720 version 7.34 upgrade information</a>	version 7.33→version 7.34

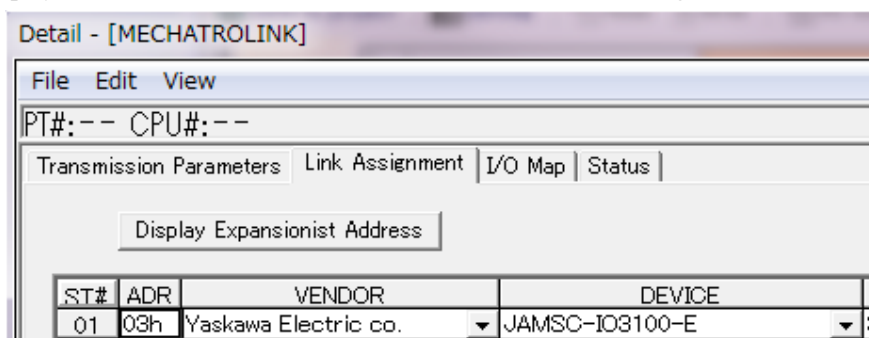
## 2. Description

### No. 1 The possible modules assigned to SVC module was added the IO3100 module. (24VDC,16-point input, output)

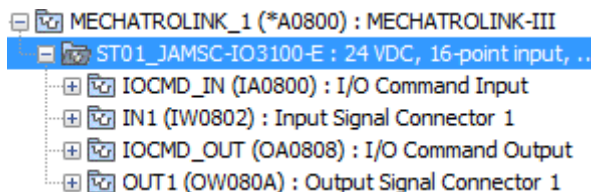
1. We changed to be displayed IO3100 module in the assignment screen of the module configuration definition of MC-Configurator.



2. We changed to be displayed IO3100 module in the detail screen of the module configuration definition.



3. We changed to be displayed IO3100 module in the IO variable.



### 【Support Version】

#### ○Controller

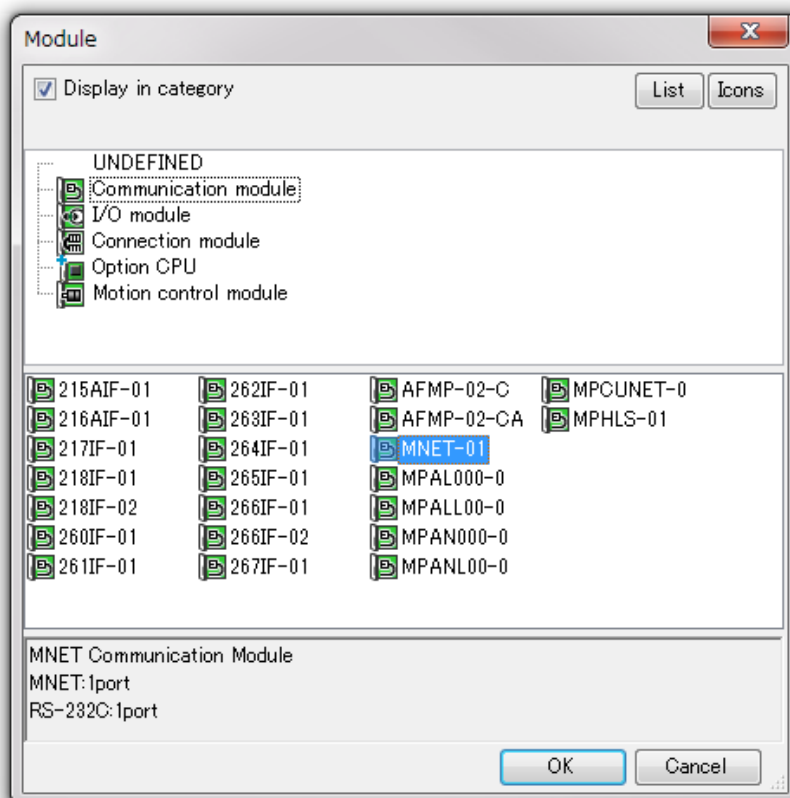
Controller	Support Version
MP3000 Series	It is not dependent on the version.
MP2000 Series	It is not dependent on the version.

#### ○Option Module

Module	Support Version
SVC-01	It is not dependent on the version.

## No. 2 The possible modules assigned to MP3000 series controller was added the MNET-01 module.

We changed to be displayed MNET-01 module in the assignment screen of the module configuration definition of MC-Configurator.



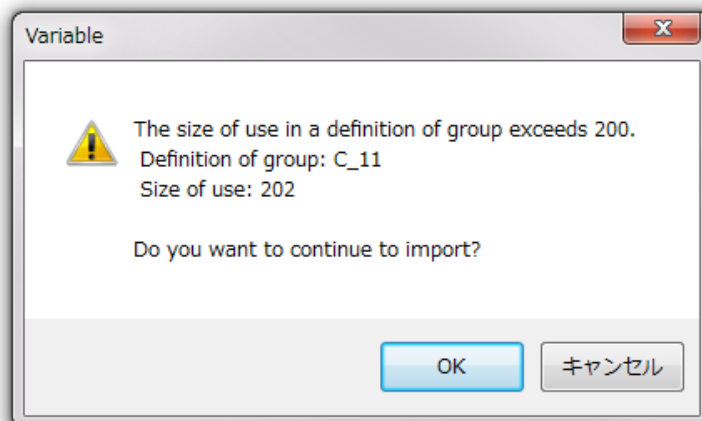
### 【Support Version】

Controller	Support Version
MP3000 Series	Ver.1.24 or later
MP2000 Series	Ver.2.61 or later



### No. 3 We improved import function of constant variable.

If the number of constant variable was imported more than 200, we changed to display confirmation message whether the import process continue.



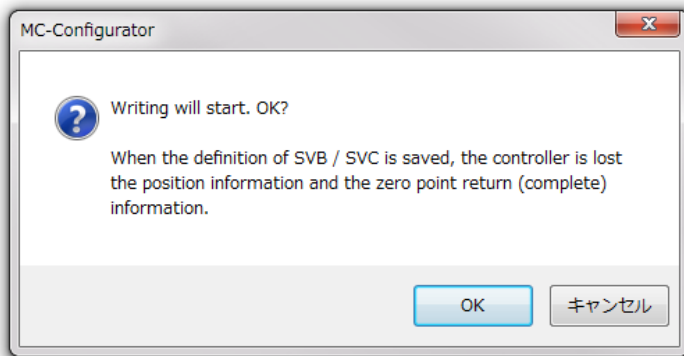
#### 【Support Version】

Controller	Support Version
MP3000 Series	It is not dependent on the version.
MP2000 Series	It is not dependent on the version.

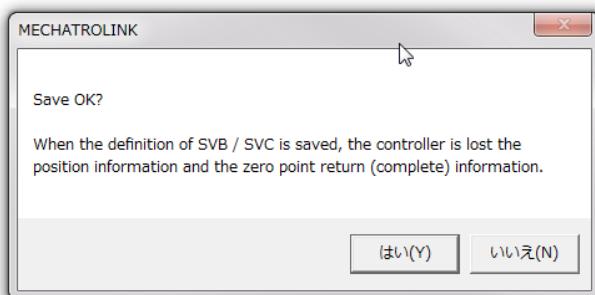
**No. 4 If the detail definition of SVB or SVC was changed and written, a confirmation message added to display.**

When it edited the detail definition and the assignment of SVB and SVC, the controller was lost the position information and the zero point return (complete) information. So we changed to display a confirmation message.

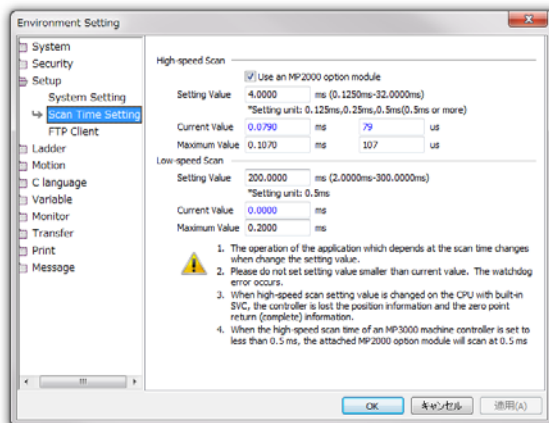
1. When it edited the SVB or SVC module in the module configuration definition of MC-Configurator, we changed to display the confirmation message.



2. When it saved the detail definition screen of SVB or SVC in the module detail definition of MC-Configurator., we changed to display the confirmation message.



3. We changed a message about the position information and the zero point return (complete) information in the confirmation message of the scan time setting screen.



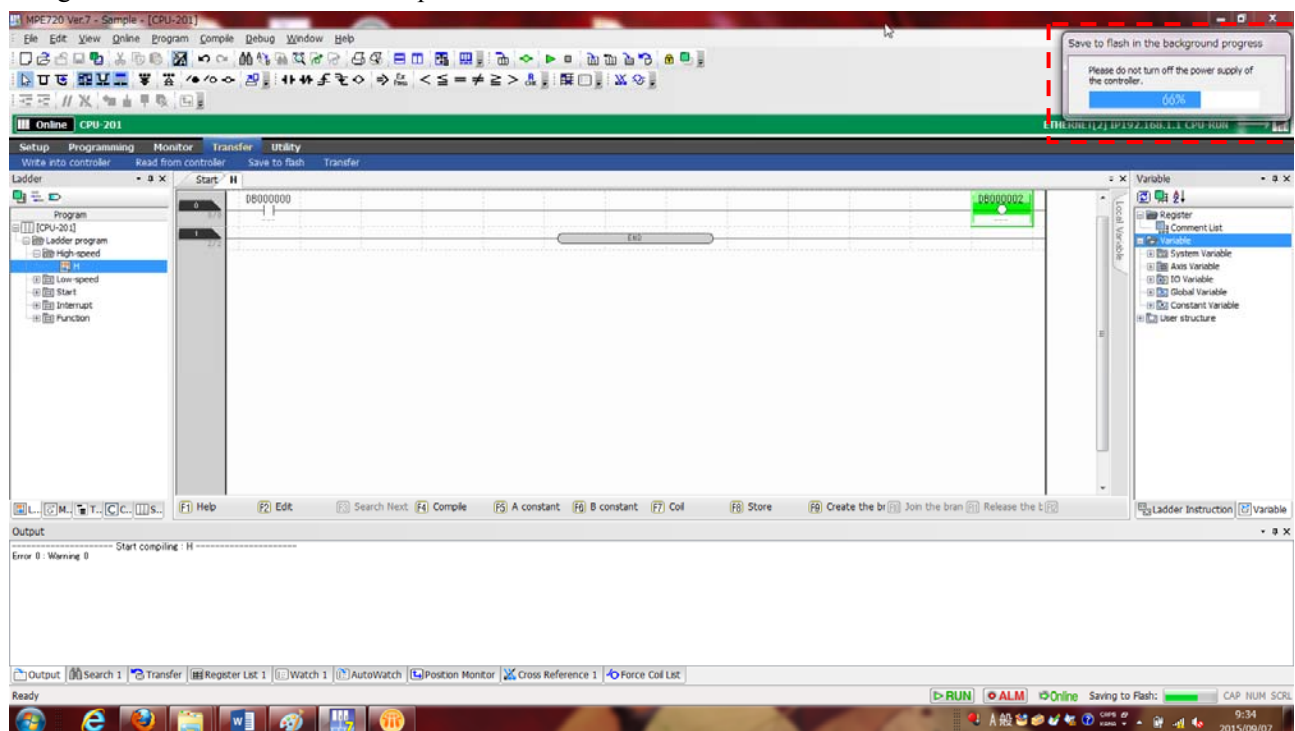
**【Support Version】**

Controller	Support Version
MP3000 Series	It is not dependent on the version.
MP2000 Series	It is not dependent on the version.

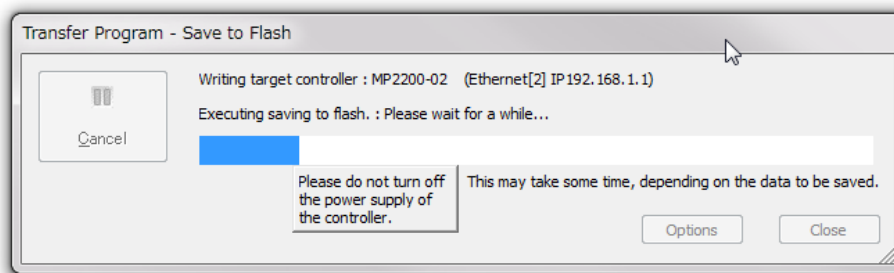
## No. 5 We improved the operation at the time of save to flash.

We improved the operation at the time of save to flash as shown in the following.

1. When it ran the save to flash, we changed to display the dialog box that was possible to confirm the progress status for background save to flash function compatible models.



2. We changed to display a message about the power OFF at the time of the save to flash for background save to flash function non-compatible models.



### 【Support Version】

Controller	Support Version
MP3000 Series	It is not dependent on the version.
MP2000 Series	It is not dependent on the version.

**No. 6 We improved a phenomenon that can not be started MPE720Ver.7 when it opened the specific project file with the specific PC.**

When trying to choose the line which doesn't exist already history of cross-reference, it was improved so that it did not reference incorrectly history of search results.

**【Support Version】**

Controller	Support Version
MP3000 Series	It is not dependent on the version.
MP2000 Series	It is not dependent on the version.

**No. 7 We improved the phenomenon that erroneously recognized the variable in the ladder program.**

In the Expression, IF and While instructions, we changed so that it was not recognized the "version" and "data" tags as a variable.

**【Support Version】**

Controller	Support Version
MP3000 Series	It is not dependent on the version.
MP2000 Series	It is not dependent on the version.

**No. 8 We improved the operation of compiler of the motion program.**

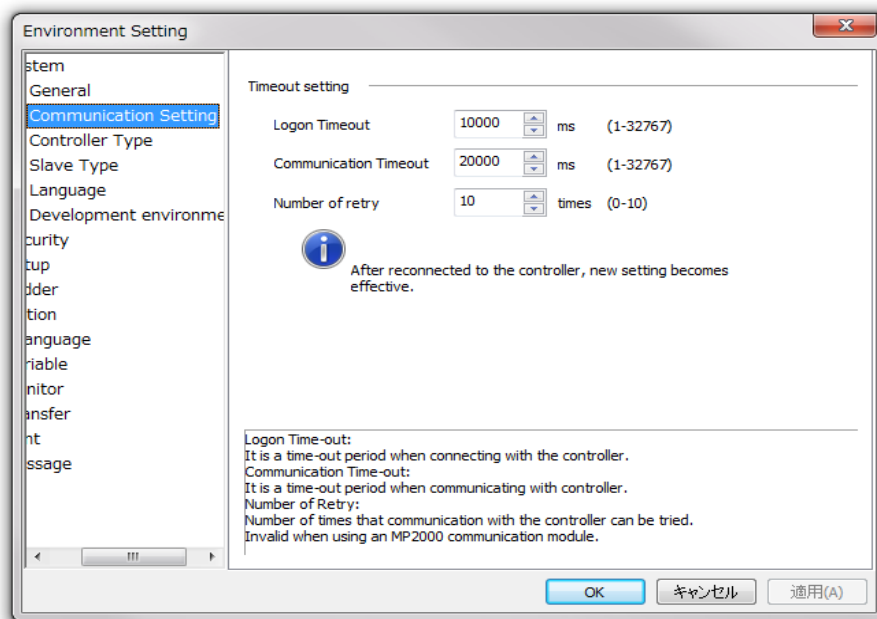
In the variable declaration of the motion program, if the reserved word was used, we changed so as to occur a compile error in the compilation process of variable declaration.

**【Support Version】**

Controller	Support Version
MP3000 Series	It is not dependent on the version.
MP2000 Series	It is not dependent on the version.

**No. 9 We changed the maximum number of retry of the communication settings of the environment setting screen.**

We changed the maximum number of retry of the communication settings of the environment setting screen to "10 times".

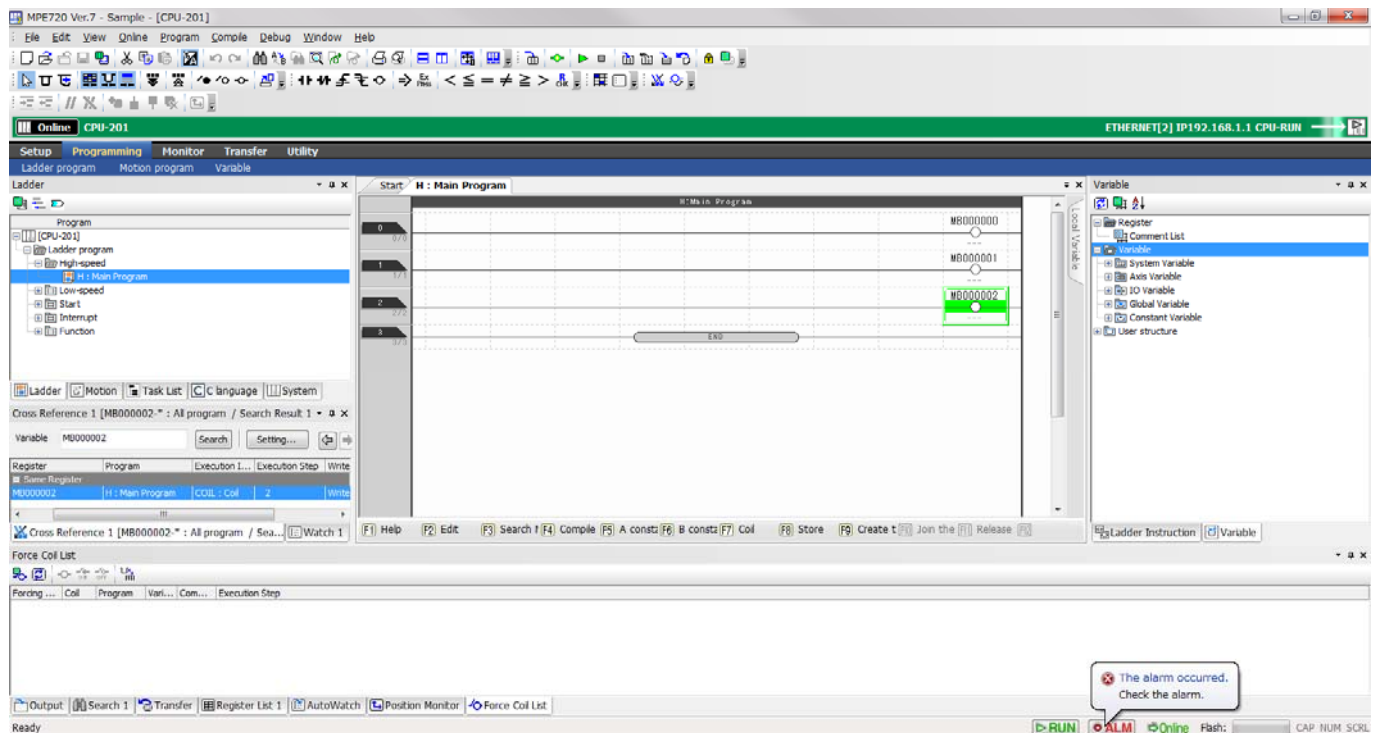


**【Support Version】**

Controller	Support Version
MP3000 Series	It is not dependent on the version.
MP2000 Series	It is not dependent on the version.

## No. 10 We improved the operation of cross-reference function.

We improved so that the register of the search target might be searched for right in spite of a layout of the cross-reference window.

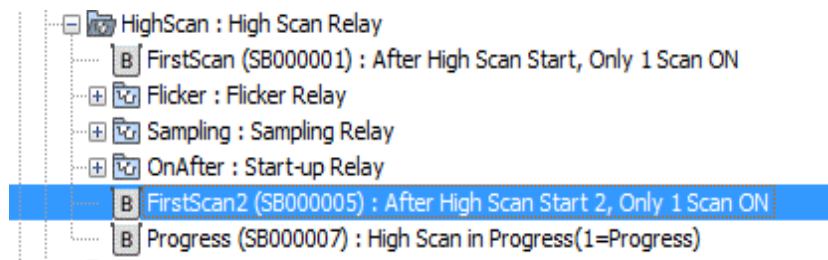


### 【Support Version】

Controller	Support Version
MP3000 Series	It is not dependent on the version.
MP2000 Series	It is not dependent on the version.

## No. 11 We added the variables and the comments that added to MP3000 series for system register.

We added the variables and the comments that added to MP3000 series for system register.



### 【Support Version】

Controller	Support Version
MP3000 Series	It is not dependent on the version.
MP2000 Series	It is not dependent on the version.