

## Upgrade Information of MPE720 Version 7.33

### 1. Added and Improved Functions

#### 1.1 Version 7.33 Upgrade Information

Items added and features improved from MPE720 version 7.31 to version 7.33 are as follows.

No.	Feature	Classification
1	CPU-302(16axes/32 axes) controller was supported.	Add function
2	The model of the Sigma-5 series SERVOPACK MECHATROLINK-II Communications References Multi Winding Unit was added.	Add function
3	The MECHATROLINK-II Communications References Wild Card Stepping Motor Drive was added.	Add function
4	The Bookmark function was supported.	Add function
5	The Window 8 was supported.	Functional enhancement
6	The servo parameter of Sigma-5-mini was added.	Improvement
7	The number of servo selections of Servo Parameter screens was changed.	Improvement
8	The parameter Pn010 of Sigma-7W was changed to non-display.	Improvement
9	The display update processing of the Real-Time Trace function has been improved.	Improvement
10	The monitor processing of MPE720 has been improved.	Improvement
11	The display processing of the Cross Reference function has been improved.	Improvement
12	The phenomenon that can't be input any more Japanese character by a combination of specific IME and MPE720 was improved.	Improvement
13	The display of the Module Configuration screen of MC-Configurator has been improved.	Improvement
14	The Tuning Panel function of Engineering Builder was changed to non-display.	Improvement
15	It was improved about memory leak of MC - Configurator.	Improvement

(\*): When MPE720 Ver.7 before MPE720 Ver.7.11 is already installed in Windows Vista and Windows 7, it may not operate for the newest information of the servo model addition by the axial setup wizard function (the newest information added into the database) updated by after MPE720 Ver.7.13.

Please refer to the following page for operating procedures.

## 【About the restriction matter when using MPE720 Ver.7 in Windows Vista and Windows 7】

When MPE720 Ver.7 is used in Windows Vista and Windows 7, the following phenomena might be generated.

### <Phenomena>

When MPE720 Ver.7 before MPE720 Ver.7.11 is already installed in Windows Vista and Windows 7, it may not operate for the newest information of the servo model addition by the axial setup wizard function (the newest information added into the database) updated by after MPE720 Ver.7.13.

### <Measures>

Using a batch file, the following folder is deleted. (\*1)

C:\Users\UserName(\*2)\AppData\Local\VirtualStore\Program Files(\*3)\YASKAWA\MPE720 Ver7

### Procedure

1. The batch file enclosed by MPE720 Ver.7 installer is copied to a desktop.

#### 【Download Version】

MPE720Ver7\_xxx(\*4)\Tools\CleanUp\MPE720Ver7\_x86.bat (32bitOS)

MPE720Ver7\_xxx(\*4)\Tools\CleanUp\MPE720Ver7\_x64.bat (64bitOS)

#### 【DVD Media Version】

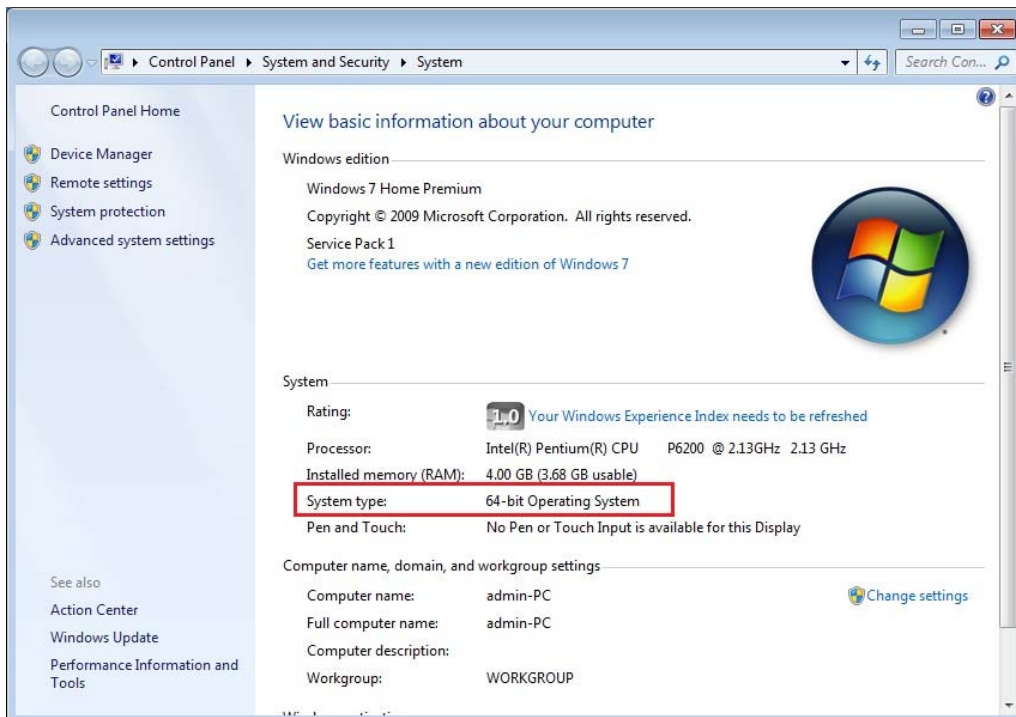
D(\*5):\Tools\CleanUp\MPE720Ver7\_x86.bat (32bitOS)

D(\*5):\Tools\CleanUp\MPE720Ver7\_x64.bat (64bitOS)

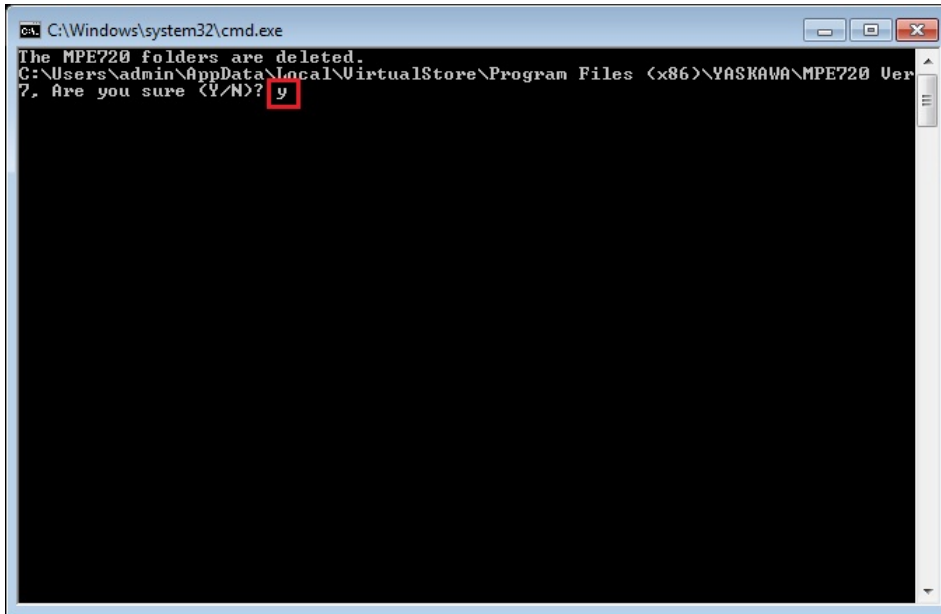
2. The copied batch file is performed.

MPE720Ver7\_x86.bat (32bitOS)

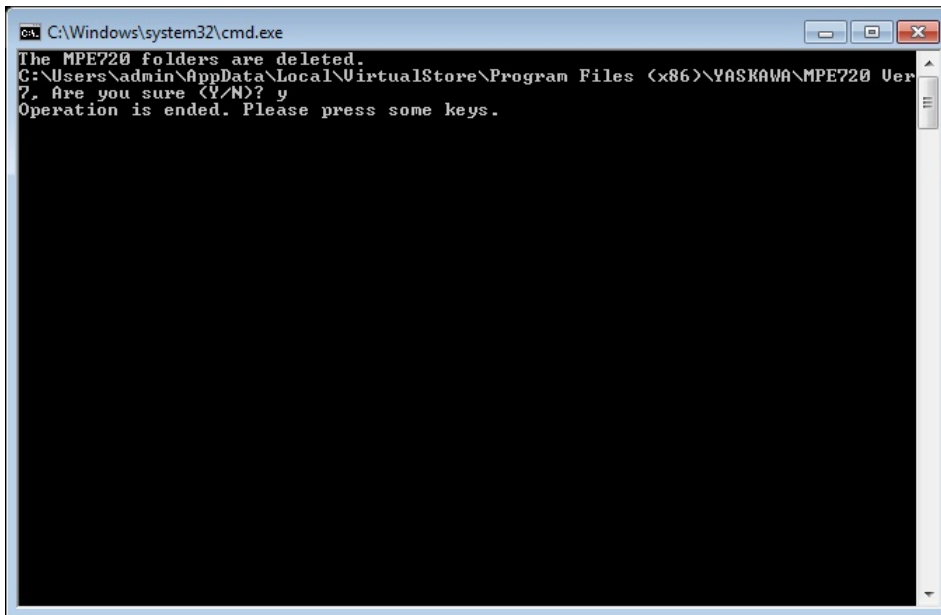
MPE720Ver7\_x64.bat (64bitOS)



3. “y” is inputted on a command prompt and the Enter button is pushed.



4. The Enter button is pushed on a command prompt after deletion.



- (\*1): When multi-user is using one set of PC, please operate it by each user.
- (\*2): The user account name that logs in enters.
- (\*3): The path changes by OS.
  - 32bitOS: Program Files
  - 64bitOS: Program Files (x86)
- (\*4): The path changes by version.
- (\*5): The path changes by DVD drive.
- (\*6): When an installation path is changed at the time of MPE720 Ver.7 installation, please delete the “MPE720 Ver7” folder which a folder subordinate has below manually according to the installed path.
  - C:\Users¥UserName(\*2)\AppData\Local\VirtualStore

## 【About compile of the parallel circuit】

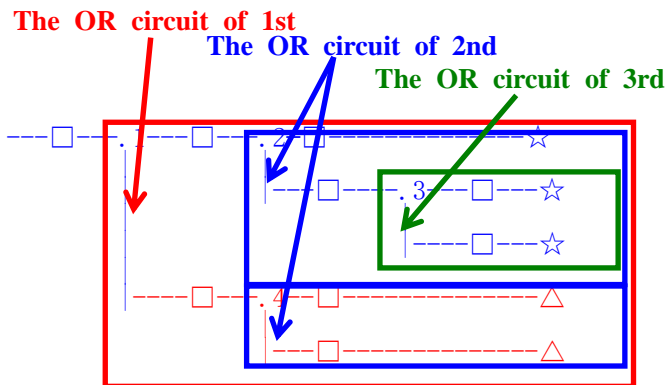
In the Ladder program of MPE720 Ver7 before MPE720 Ver7.23, when the parallel circuit is used, the following phenomena may occur.

<Phenomena>

When the circuit containing the following pattern was created, there was a phenomenon of operating without receiving the condition that the circuit below the OR circuit of 1<sup>st</sup> class must operate essentially in response to the conditional instruction before the OR circuit of 1<sup>st</sup> class.

<Measures>

When a phenomenon occurs, please carry out re-compile about the Ladder program in MPE720 Ver7 after MPE720 Ver7.24. Or please carry out again “Compile All Programs” of “Compile” menu.



The OR circuit of 1st class: The OR circuit branched from the bus-bar of language.

The OR circuit of 2nd class: The OR circuit branched out of the OR circuit of 1st class.

The OR circuit of 3rd class: The OR circuit branched out of the OR circuit of 2nd class.

□(Conditional instruction): NO Contact, NC Contact, Coil, instruction(==, !=, >, <), power line (-----) etc.

☆(Output instruction): Coil, Block instruction(Expression, STORE, COPYW) etc

※However, when all ☆ is coil commands, a phenomenon does not occur.

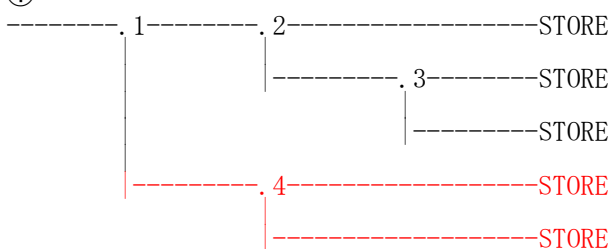
△(Output instruction): Coil, Block instruction(Expression, STORE, COPYW)etc

<Pattern>

Symbol	Instruction
	NO Contact
STORE	STORE instruction
()	Coil

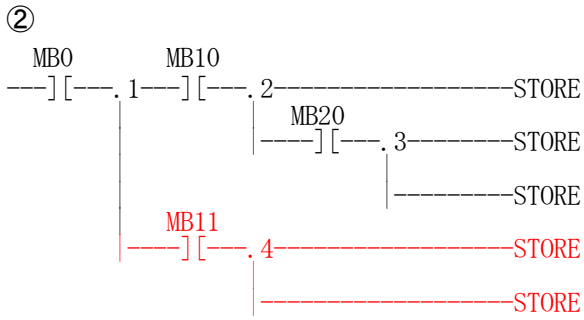
<NG Pattern>

①



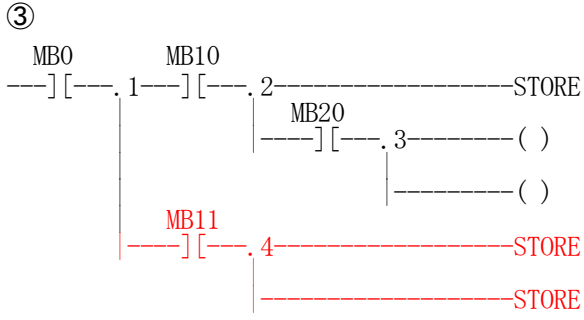
This pattern is minimum circuit pattern.

This is NG.



It is NG even if the minimum circuit pattern has conditional instructions (NO Contact etc.).

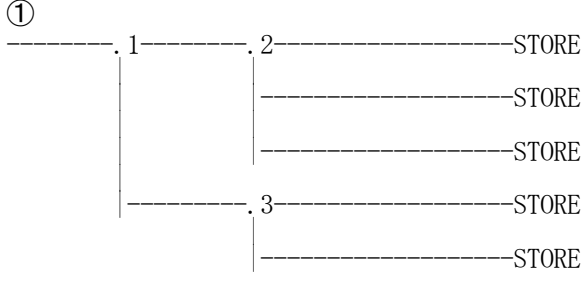
This is NG



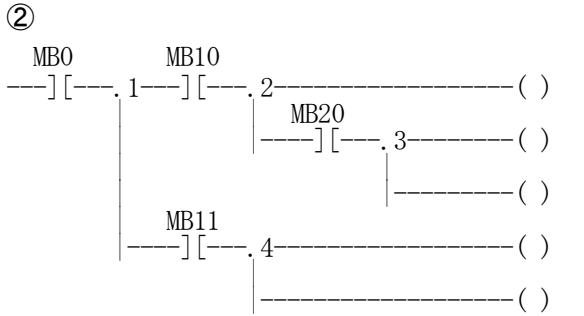
It is NG when there are at least one block commands (STORE command etc.) here.

This is NG

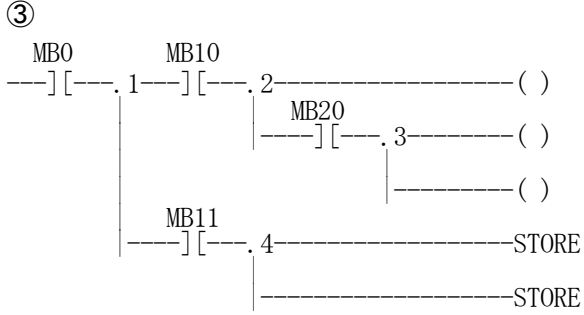
<OK Pattern>



Since it is the OR circuit of 2nd, it is OK.



Since it is the coil altogether, it is OK.



Since it is the coil altogether, it is OK.

## 1.2 Past Upgrade Information

No.	Upgrade Information	Remarks
1	<a href="#">MPE720 version 7.11 upgrade information</a>	version 7.10→version 7.11
2	<a href="#">MPE720 version 7.13 upgrade information</a>	version 7.11→version 7.13
3	<a href="#">MPE720 version 7.14 upgrade information</a>	version 7.13→version 7.14
4	<a href="#">MPE720 version 7.20 upgrade information</a>	version 7.14→version 7.20
5	<a href="#">MPE720 version 7.21 upgrade information</a>	version 7.20→version 7.21
6	<a href="#">MPE720 version 7.23 upgrade information</a>	version 7.21→version 7.23
7	<a href="#">MPE720 version 7.24 upgrade information</a>	version 7.23→version 7.24
8	<a href="#">MPE720 version 7.26 upgrade information</a>	version 7.24→version 7.26
9	<a href="#">MPE720 version 7.27 upgrade information</a>	version 7.26→version 7.27
10	<a href="#">MPE720 version 7.28 upgrade information</a>	version 7.27→version 7.28
11	<a href="#">MPE720 version 7.29 upgrade information</a>	version 7.28→version 7.29
12	<a href="#">MPE720 version 7.30 upgrade information</a>	version 7.29→version 7.30
13	<a href="#">MPE720 version 7.31 upgrade information</a>	version 7.30→version 7.31

## 2. Description

### No. 1 CPU-302(16axes/32 axes) controller was supported.

CPU-302(16axes/32 axes) controller of the MP3300 was supported.

1. For CPU-302(16 axes) controller  
CPU-302(16 axes) controller was added.  
The SVC module built in CPU can connect up to 16 axes.
2. For CPU-302(32 axes) controller  
CPU-302(32 axes) controller was added.  
The SVC module built in CPU can connect up to 32 axes.

#### 【Support Version】

○Controller

Controller		Support Version
MP3300	CPU-302(16axes)	Ver1.18 or later
	CPU-302(32axes)	Ver1.18 or later
MP2000 series		There is no correspondence.

**No. 2 The model of the Sigma-5 series SERVOPACK MECHATROLINK-II Communications References Multi Winding Unit was added.**

It supported about the following SERVOPACK.

- (1) MECHATROLINK-II Communications References Multi Winding Unit  
JUSP-MD\*\*11\* (Rotary type)

1. Module Configuration

In the Module Configuration, it changed so that the SERVOPACK could be assigned.

2. Fixed, Setting, Monitor Parameter

The screen for carrying out a detailed setup of Fixed Parameters, Setting Parameters and Monitor Parameters of the SERVOPACK were added.

3. Servo Parameter, Servo Monitor

The screen for carrying out a detailed setup of Servo Parameter and Servo Monitor of the SERVOPACK were added.

01	SVB01	----	Circuit No5	1
01	JUSP-MD**11*	----	01	----
02	-- UNDEFINED --	----		
03	-- UNDEFINED --	----		
04	-- UNDEFINED --	----		
05	-- UNDEFINED --	----		
06	-- UNDEFINED --	----		
07	-- UNDEFINED --	----		
08	-- UNDEFINED --	----		

**【Support Version】**

○Controller

Controller		Support Version
MP2000 Series	Built-in SVB	Ver2.94 or later

○Option Module

Module	Support Version
SVB-01	Ver1.35 or later



### No. 3 The MECHATROLINK-II Communications References Wild Card Stepping Motor Drive was added.

It supported about the following the Stepping Motor Drive.

- (1) MECHATROLINK-II Communications References Wild Card Stepping Motor Drive  
Wild Card SteppingMotorDRV (Rotary type)

#### 1. Module Configuration

In the Module Configuration, it changed so that the Stepping Motor Drive could be assigned.

#### 2. Fixed, Setting, Monitor Parameter

The screen for carrying out a detailed setup of Fixed Parameters, Setting Parameters and Monitor Parameters of the Stepping Motor Drive were added.

#### 3. Stepping Motor Parameter

The screen for carrying out a detailed setup of Stepping Motor Parameter of the Stepping Motor Drive were added.

03 SVC32		----	Circuit No1	2
01	Wild Card SteppingMotorDRV	----	03[H] (00[H])	----
02	-- UNDEFINED --	----		
03	-- UNDEFINED --	----		
04	-- UNDEFINED --	----		
05	-- UNDEFINED --	----		
06	-- UNDEFINED --	----		
07	-- UNDEFINED --	----		
08	-- UNDEFINED --	----		

#### 【Support Version】

##### ○Controller

Controller		Support Version
MP3000 Series	Built-in SVC	Ver1.18 or later
MP2000 Series	Built-in SVC	Ver2.94 or later

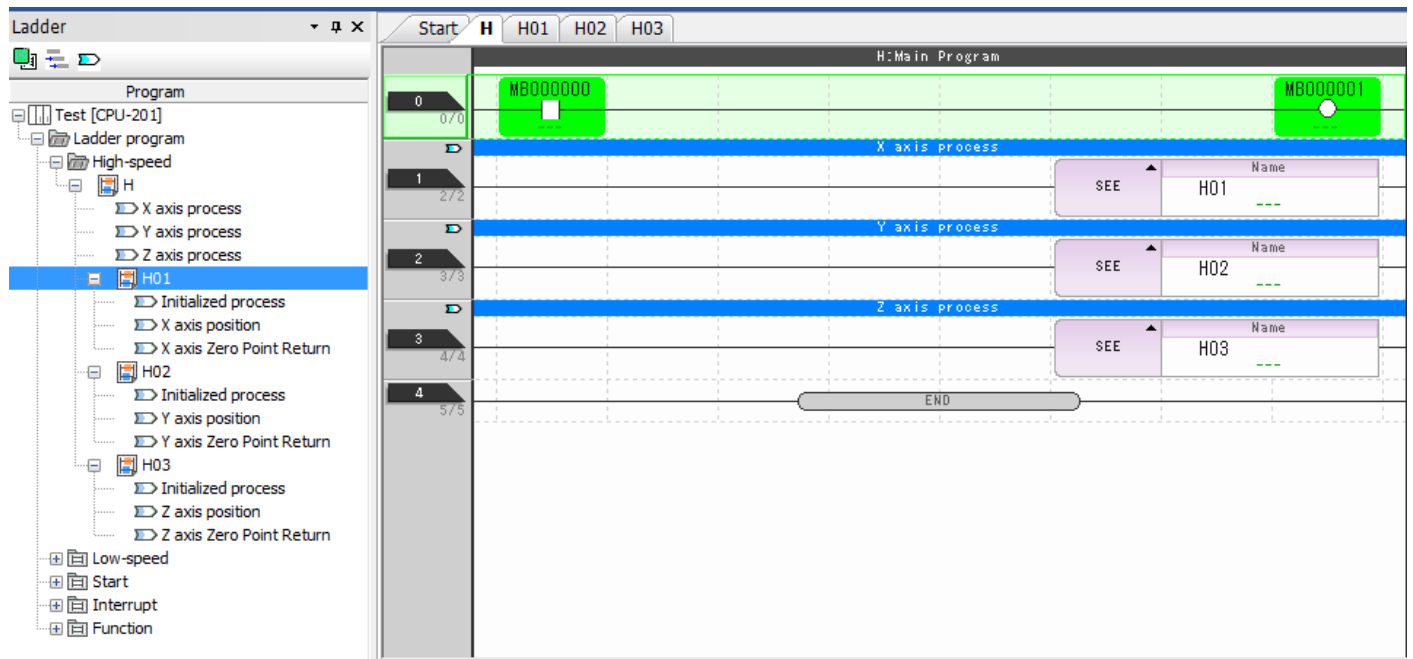
##### ○Option Module

Module	Support Version
SVC-01	Ver1.15 or later

#### No. 4 The Bookmark function was supported.

In the Bookmark function, the following are possible.

1. The bookmark comment can be registered in the Ladder Program.
2. The registered Bookmark comment can be referred to from the tree of the Ladder Program.
3. Moreover, it is possible to jump from the tree to the bookmark comment of the correspondence.
4. The content of the processing of the program can be confirmed by adding the content of the processing of the Ladder Program to the bookmark function.



#### 【Support Version】

Controller	Support Version
MP3000 Series	It is not dependent on the version.
MP2000 Series	It is not dependent on the version.

#### No. 5 The Window 8 was supported.

It was supported Windows 8 and Windows 8.1 of Windows OS.

#### 【Support Version】

Controller	Support Version
MP3000 Series	It is not dependent on the version.
MP2000 Series	It is not dependent on the version.

## No. 6 The servo parameter of Sigma-5-mini was added.

The following parameters were added.

○SGDV-\*\*\*E11\*

No.	Parameter Name	Firmware Version
Pn240	Reserved parameter (Do not change)	Ver0028 or later
Pn884	Communications Control 2	Ver0029 or later

○SGDV-\*\*\*E21\*

No.	Parameter Name	Firmware Version
Pn240	Reserved parameter (Do not change)	Ver0028 or later
Pn868	SVCMD_IO Output Signal Monitor Allocations 1	Ver0028 or later
Pn869	SVCMD_IO Output Signal Monitor Allocations 2	Ver0028 or later
Pn884	Communications Control 2	Ver0029 or later

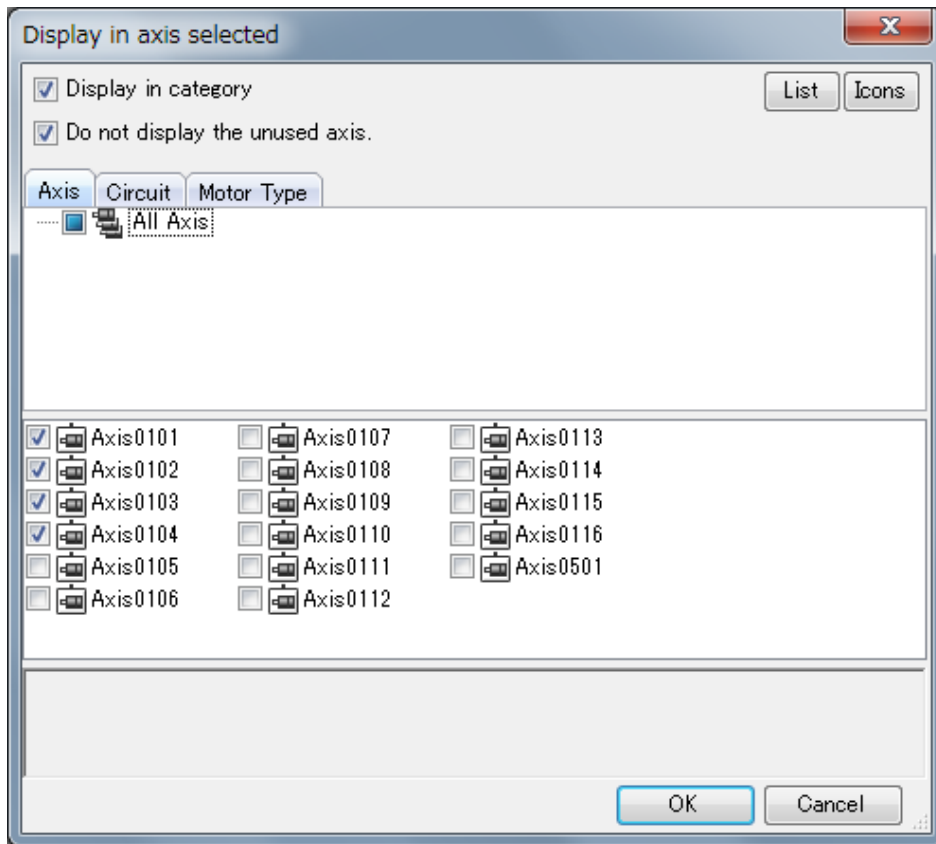
### 【Support Version】

○Controller

Controller	Support Version
MP3000 Series	It is not dependent on the version.
MP2000 Series	It is not dependent on the version.

**No. 7 The number of servo selections of Servo Parameter screens was changed.**

It changed that the selection number of “Display in axis selected” dialog displayed with the maximum four axes checked. It is also possible to select more than five axes up to now, and to start the Servo Parameter screen.



**【Support Version】**

Controller	Support Version
MP3000 Series	It is not dependent on the version.
MP2000 Series	It is not dependent on the version.

**No. 8 The parameter Pn010 of Sigma-7W was changed to non-display.**

The Servo parameter Pn010 of Sigma-7W was changed to non-display parameter. It changed to non-display parameter because there was a phenomenon that the Servo parameter did not open when Pn010 was changed.

**【Support Version】**

Controller	Support Version
MP3000 Series	It is not dependent on the version.
MP2000 Series	It is not dependent on the version.

### **No. 9 The display update processing of the Real-Time Trace function has been improved.**

In the Real-Time Trace function, there was a phenomenon that the other operations was heavy when the acquired data points were increased.

The display update processing of the trace is improved, and it has improved it so that the operation may lighten.

#### **【Support Version】**

Controller	Support Version
MP3000 Series	It is not dependent on the version.
MP2000 Series	It is not dependent on the version.

### **No. 10 The monitor processing of MPE720 has been improved.**

In the communication processing of MPE720, the communication processing of the monitor was done also on non-active screen.

It was improved so as not to communicate the monitor about the non-active screen. The operation of MPE720 lightens by not doing an unnecessary communication.

#### **【Support Version】**

Controller	Support Version
MP3000 Series	It is not dependent on the version.
MP2000 Series	It is not dependent on the version.

### **No. 11 The display processing of the Cross Reference function has been improved.**

When the mouse cursor was moved to the text box that input variable or register of the Cross Reference function, the mouse cursor was displayed an hourglass.

The display update processing has been improved so as not to become an hourglass display.

#### **【Support Version】**

Controller	Support Version
MP3000 Series	It is not dependent on the version.
MP2000 Series	It is not dependent on the version.

### **No. 12 The phenomenon that can't be input any more Japanese character by a combination of specific IME and MPE720 was improved.**

It is impossible to input Japanese character to the folder name and the file name in the Explorer and the file manager when IME of ATOK of JustSystems Corporation used.

It has improved that you could be inputted Japanese characters even when IME of ATOK is used.

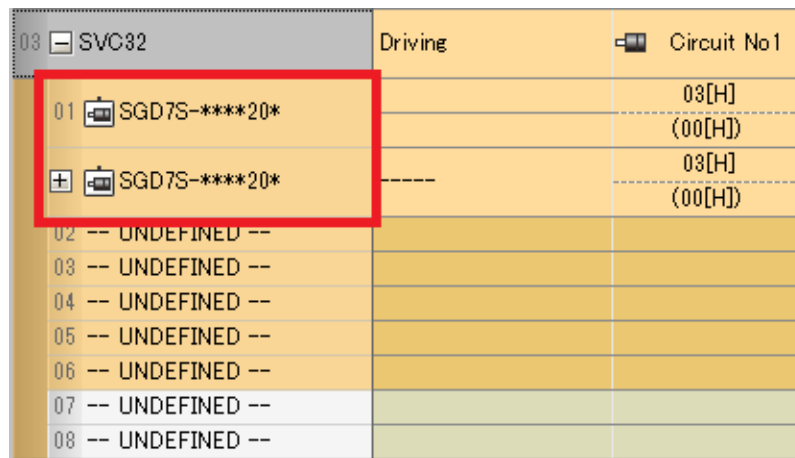
#### **【Support Version】**

Controller	Support Version
MP3000 Series	It is not dependent on the version.
MP2000 Series	It is not dependent on the version.

**No. 13 The display of the Module Configuration screen of MC-Configurator has been improved.**

In the Module Configuration screen of MC-Configurator, the slave equipment of the same station that had been allocated to the motion module were displayed the two or more.

It has improved it so that two or more slave equipment of the same station are not displayed.



**【Support Version】**

Controller	Support Version
MP3000 Series	It is not dependent on the version.
MP2000 Series	It is not dependent on the version.

**No. 14 The Tuning Panel function of Engineering Builder was changed to non-display.**

Because the Tuning Panel of an equivalent function existed in Programmer, the Tuning Panel function of Engineering Builder was assumed to be non-display function.

Please use the Tuning Panel function of Programmer.

The Tuning Panel function of Engineering Builder was displayed on the project file of the MP2000 series. In the Tuning Panel function of Engineering Builder, It was in the incomplete state, when the current value is changed for the Bit type register, the current value is changed in the Word type spectrum. The current value was not able to be written, except for the Bit type register.

**【Support Version】**

Controller	Support Version
MP3000 Series	It is not dependent on the version.
MP2000 Series	It is not dependent on the version.

**No. 15 It was improved about memory leak of MC - Configurator.**

When parameter screen of MC-Configurator (Fixed Parameter, Setting Parameter and Servo Parameter etc.) is opened and copy and paste operation is repeated, there was a phenomenon that the memory leak occurs, and the error message of error code: 0x80004005 is displayed, and the parameter can't be edited any more.

**【Support Version】**

Controller	Support Version
MP3000 Series	It is not dependent on the version.
MP2000 Series	It is not dependent on the version.