

Upgrade Information of MPE720 Version 7.26

1. Added and Improved Functions

1.1 Ver.7.26 Upgrade Information

Items added and features improved from MPE720 version 7.24 to version 7.26 are as follows.

No.	Feature	Classification
1	It supported the MP3300 (CPU-301) controller.	Add function
2	It supported to the Sigma-7 series SERVOPACK.	Add function
3	The Sigma-V-MD series (SGDV-MDA02) of 8-axis driving model was added to the slave devices that can be assigned to motion control module SVC.	Add function
4	267IF-01 (CC-Link Master) module was added.	Add function
5	The Task List function was added.	Add function
6	The maintenance function of the window layout was supported.	Add function
7	The representational function of the window layout was added.	Add function
8	The system monitor function was strengthened.	Functional enhancement
9	The Cross Reference function was strengthened.	Functional enhancement
10	The Transfer function has been improved.	Functional enhancement
11	The search in project function was strengthened.	Functional enhancement
12	The replace in project function has been improved.	Functional enhancement
13	The editing operation of two or more programs has been improved.	Functional enhancement
14	The "Display in axis selected" has been improved.	Functional enhancement
15	The print function has been improved.	Functional enhancement
16	The recovery function of the project file was supported.	Functional enhancement
17	The default value of the Group Definition (Axis Variable) has been improved.	Improvement
18	The operation of the Module Configuration (MC-Configurator) has been improved.	Improvement
19	The communications setting screen has been improved.	Improvement
20	The default value of the Variable Display Format was changed.	Improvement
21	The starting timing of the Communication Platform was changed.	Improvement
22	The "IMPORT", "EXPORT", "IMPORTL", and "EXPORTL" were added to the System Structure.	Improvement
23	The MC-Configurator start operation of the project to which the project password is set has been improved.	Improvement
24	The message was added to the Trace Manager function.	Improvement
25	The Real-Time trace function has been improved.	Improvement
26	The conversion operation from the MAL file to the YMW file has been improved.	Improvement
27	The MC-Configurator start operation has been improved.	Improvement
28	The compile operation of the ladder program has been improved.	Improvement
29	The compile operation of the IMORTL/EXPORTL command has been improved.	Improvement
30	The compile operation of the motion program has been improved.	Improvement
31	The Cross Reference operation of the Local registers has been improved.	Improvement
32	The operation of the "Search in Project" function has been improved.	Improvement
33	The operation of "Using register" display of the register list has been improved.	Improvement
34	The "0.0001%" was added to "Speed unit selection" of the Setting parameter of PO-01 module.	Improvement
35	The display of the detailed definition screen of the AI-01 and AO-01 modules has been improved.	Improvement
36	The transfer operation has been improved.	Improvement

37	The operation of the axis variable comment has been improved.	Improvement
38	The operation of the trigger waiting state of the Real-Time trace function has been improved.	Improvement
39	The print function has been improved.	Improvement
40	The print of constant variable (C register) has been improved.	Improvement

(*): When MPE720 Ver.7 before MPE720 Ver.7.11 is already installed in Windows Vista and Windows 7, it may not operate for the newest information of the servo model addition by the axial setup wizard function (the newest information added into the database) updated by after MPE720 Ver.7.13.

Please refer to the following page for operating procedures.

【About the restriction matter when using MPE720 Ver.7 in Windows Vista and Windows 7】

When MPE720 Ver.7 is used in Windows Vista and Windows 7, the following phenomena might be generated.

<Phenomena>

When MPE720 Ver.7 before MPE720 Ver.7.11 is already installed in Windows Vista and Windows 7, it may not operate for the newest information of the servo model addition by the axial setup wizard function (the newest information added into the database) updated by after MPE720 Ver.7.13.

<Measures>

Using a batch file, the following folder is deleted. (*1)

C:\Users\UserName(*2)\AppData\Local\VirtualStore\Program Files(*3)\YASKAWA\MPE720 Ver7

Procedure

1. The batch file enclosed by MPE720 Ver.7 installer is copied to a desktop.

【Download Version】

MPE720Ver7_xxx(*4)\Tools\CleanUp\MPE720Ver7_x86.bat (32bitOS)

MPE720Ver7_xxx(*4)\Tools\CleanUp\MPE720Ver7_x64.bat (64bitOS)

【CD Media Version】

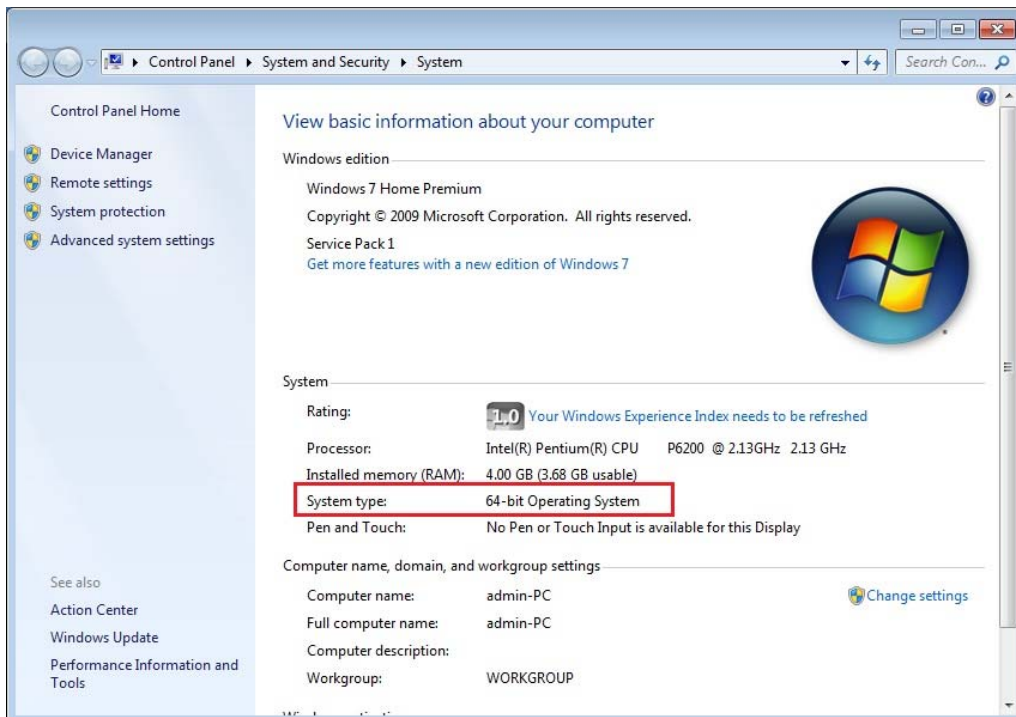
D(*5):\Tools\CleanUp\MPE720Ver7_x86.bat (32bitOS)

D(*5):\Tools\CleanUp\MPE720Ver7_x64.bat (64bitOS)

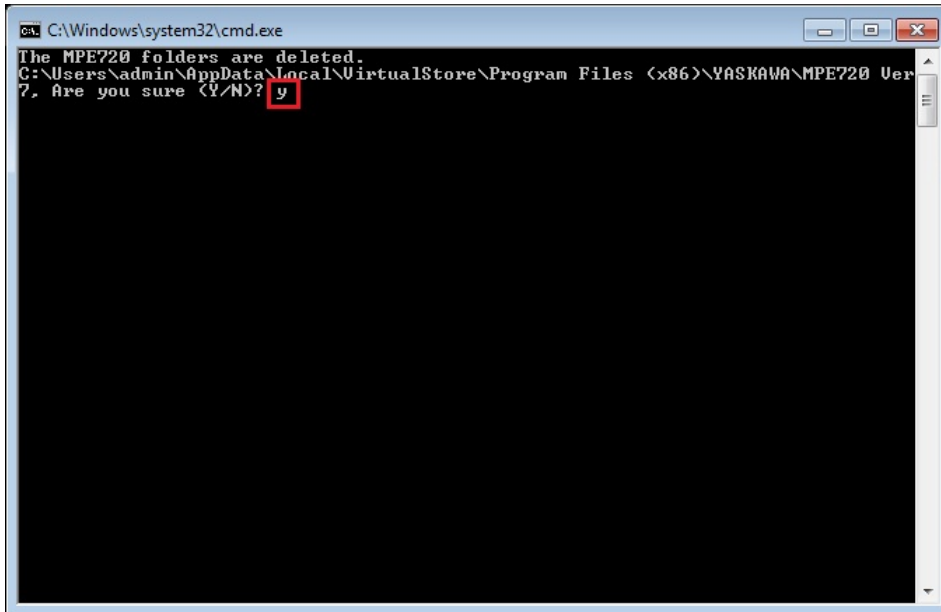
2. The copied batch file is performed.

MPE720Ver7_x86.bat (32bitOS)

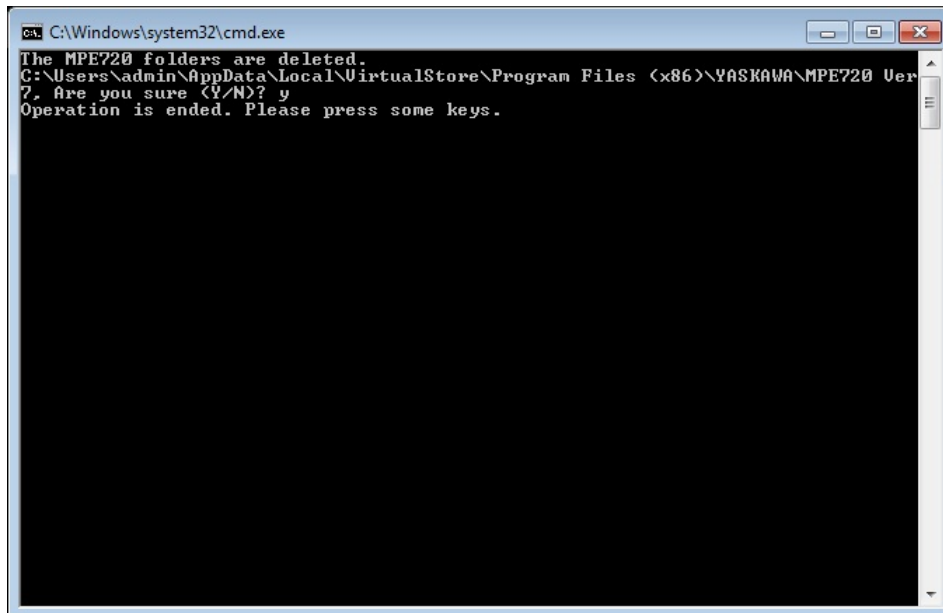
MPE720Ver7_x64.bat (64bitOS)



3. “y” is inputted on a command prompt and the Enter button is pushed.



4. The Enter button is pushed on a command prompt after deletion.



- (*1): When multi-user is using one set of PC, please operate it by each user.
- (*2): The user account name that logs in enters.
- (*3): The path changes by OS.
 - 32bitOS: Program Files
 - 64bitOS: Program Files (x86)
- (*4): The path changes by version.
- (*5): The path changes by CD/DVD drive.
- (*6): When an installation path is changed at the time of MPE720 Ver.7 installation, please delete the “MPE720 Ver7” folder which a folder subordinate has below manually according to the installed path.
 - C:\Users¥UserName(*2)\AppData\Local\VirtualStore

【About compile of the parallel circuit】

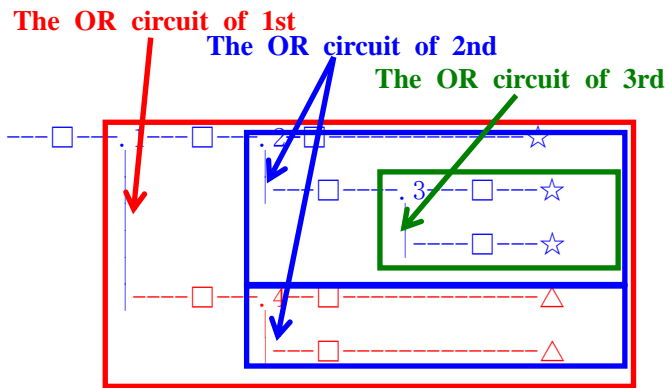
In the Ladder program of MPE720 Ver7 before MPE720 Ver7.23, when the parallel circuit is used, the following phenomena may occur.

<Phenomena>

When the circuit containing the following pattern was created, there was a phenomenon of operating without receiving the condition that the circuit below the OR circuit of 1st class must operate essentially in response to the conditional instruction before the OR circuit of 1st class.

<Measures>

When a phenomenon occurs, please carry out re-compile about the Ladder program in MPE720 Ver7 after MPE720 Ver7.24. Or please carry out again “Compile All Programs” of “Compile” menu.



The OR circuit of 1st class: The OR circuit branched from the bus-bar of language.

The OR circuit of 2nd class: The OR circuit branched out of the OR circuit of 1st class.

The OR circuit of 3rd class: The OR circuit branched out of the OR circuit of 2nd class.

□(Conditional instruction): NO Contact, NC Contact, Coil, instruction(==, !=, >, <), power line (-----) etc.

☆(Output instruction): Coil, Block instruction(Expression, STORE, COPYW) etc

※However, when all ☆ is coil commands, a phenomenon does not occur.

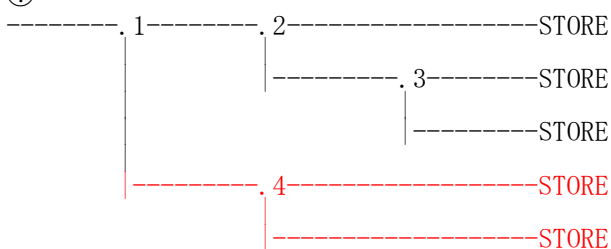
△(Output instruction): Coil, Block instruction(Expression, STORE, COPYW)etc

<Pattern>

Symbol	Instruction
	NO Contact
STORE	STORE instruction
()	Coil

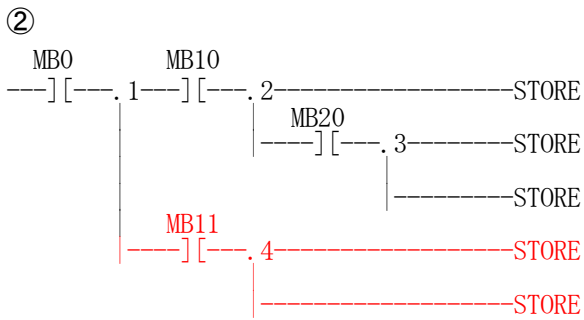
<NG Pattern>

①



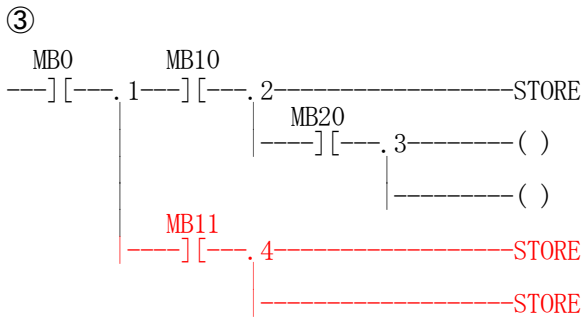
This pattern is minimum circuit pattern.

This is NG.



It is NG even if the minimum circuit pattern has conditional instructions (NO Contact etc.).

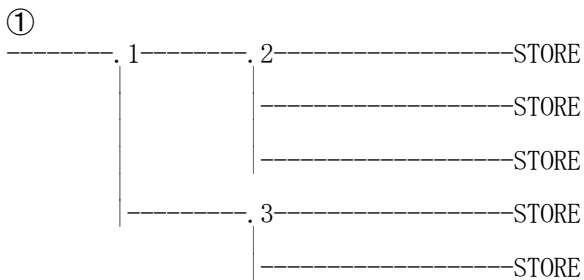
This is NG



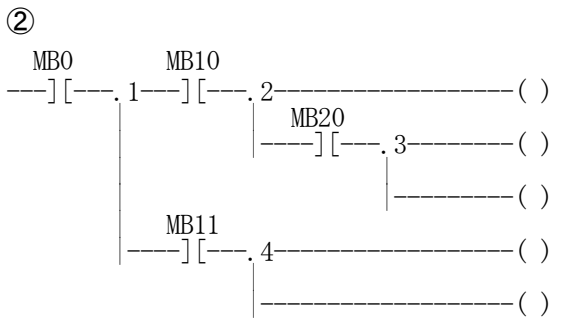
It is NG when there are at least one block commands (STORE command etc.) here.

This is NG

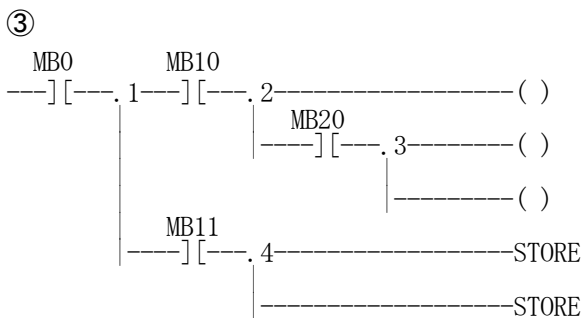
<OK Pattern>



Since it is the OR circuit of 2nd, it is OK.



Since it is the coil altogether, it is OK.



Since it is the coil altogether, it is OK.

1.2 Past Upgrade Information

No.	Upgrade Information	Remarks
1	MPE720 version 7.11 upgrade information	version 7.10→version 7.11
2	MPE720 version 7.13 upgrade information	version 7.11→version 7.13
3	MPE720 version 7.14 upgrade information	version 7.13→version 7.14
4	MPE720 version 7.20 upgrade information	version 7.14→version 7.20
5	MPE720 version 7.21 upgrade information	version 7.20→version 7.21
6	MPE720 version 7.23 upgrade information	version 7.21→version 7.23
7	MPE720 version 7.24 upgrade information	version 7.23→version 7.24

2. Description

No. 1 It supported the MP3300 (CPU-301) controller.

MP3300 controller that is successor of MP2300 was supported.

1. For MP3300 controller

MP3300 controller was added.

2. The back ground flash preservation function

The function to save the flash on the back ground was supported as a new function of MP3300.

The other engineering operations cannot be done up to now until the flash preservation is completed. And the other engineering operations are possible while saving the flash.

The status of the flash preservation can be monitored by confirming the status bar.

As for the flash preservation operation, it is the same.

3. The FTP server and FTP client function

The logging data and the register data stored in with built-in CPU RAM or USB memory by the file transfer feature (FTP server function) can be downloaded from remoteness to the device.

4. The start measuring high-speed scan processing time mode

The start measuring high-speed scan processing time mode was supported. The function was able to be selected "From 1th scan" and "From 2nd scan".

The best function for the application where initialization etc. is executed to the first scan when the power supply is turned on, or the high-speed scan is postponed only to the first scan, where high-speed time over etc. is generated.

【Support Version】

Controller	Support Version
MP3000 Series	MP3300 (CPU-301) Ver1.10 or later
MP2000 Series	There is no correspondence.

No. 2 It supported to the Sigma-7 series SERVOPACK.

The Sigma-7 series SERVOPACK (MECHATROLINK-III communications reference, Sigma-7S (SGD7S-****20*)) that is successor of the Sigma-V were supported.

1. Module Configuration

In the Module Configuration, it changed so that the Sigma-7S series could be assigned.

2. Fixed, Setting, Monitor Parameter

The screen for carrying out a detailed setup of Fixed Parameters, Setting Parameters and Monitor Parameters of the Sigma-7S series was added.

3. Servo Parameter, Servo Monitor

The screen for carrying out a detailed setup of Servo Parameter and Servo Monitor of the Sigma-7S series was added.

Module	Function Module/Slave	Status	Circuit No/AxisAddress		Motion Register
			Start	cupied circu	
01 [CPU-301(16axes)] : ---					
	01 CPU	----	----	----	----
	02 218IFD	----	Circuit No1	1	----
	03 SVC	----	Circuit No1	1	8000 - 87FF[H]
	01 SGD7S-****20*	----	03[H] (00[H])	----	8000 - 807F[H]
	02 -- UNDEFINED --	----			
	03 -- UNDEFINED --	----			
	04 -- UNDEFINED --	----			
	05 -- UNDEFINED --	----			
	06 -- UNDEFINED --	----			
	07 -- UNDEFINED --	----			
	08 -- UNDEFINED --	----			
	04 SVR	----	Circuit No2	1	8800 - 8FFF[H]
	05 M-EXECUTOR	----	----	----	----
	06 -- UNDEFINED --	----			
	07 -- UNDEFINED --	----			
	01 -- UNDEFINED --[-----]	----			
	02 -- UNDEFINED --[-----]	----			
	03 -- UNDEFINED --[-----]	----			
	04 -- UNDEFINED --[-----]	----			

【Support Version】

Controller

Controller		Support Version
MP3000 Series	MP3300 (CPU-301)	Ver1.10 or later
	MP3200 (CPU-201, CPU-202)	Ver1.12 or later
MP2000 Series		Ver2.88 or later

Option Module

Module	Support Version
SVC-01	Ver1.12 or later

No. 3 The Sigma-V-MD series (SGDV-MDA02) of 8-axis driving model was added to the slave devices that can be assigned to motion control module SVC.

1. Module Configuration

In the Module Configuration, it changed so that the Sigma-V-MD series could be assigned.

And, in the Module Configuration, when Sigma-V-MD was assigned, it changed so that Sigma-V-MD might be displayed as one group.

The movement of the station number of the assigned SERVOPACK can be changed by drag-and-drop operation.

2. Fixed, Setting, Monitor Parameter

The screen for carrying out a detailed setup of Fixed parameters, Setting Parameters and Monitor Parameters of the Sigma-V-MD series was added.

3. Servo Parameter, Servo Monitor

The screen for carrying out a detailed setup of Servo Parameter and Servo Monitor of the Sigma-V-MD series was added.

Module	Function Module/Slave	Status	Circuit No./AxisAddress		Motion Register	Register(Input/Output)	
			Start	cupied circ		Disabled	Start - End
01 [CPU-201] : ---							
EXU-001							
PSA-12							
00 CPU-201	01 CPU	----					
	02 218IFD	----	00	Circuit No1 1		<input type="checkbox"/> Input <input type="checkbox"/> OutPut	0000 - 07FF[H]
	03 SVC82	----	01	Circuit No1 2	8000 - 8FFF[H]	<input type="checkbox"/> Input <input type="checkbox"/> OutPut	0800 - 0BFF[H]
	SGDV-MDA02**M3*		03[H]				
	01 Control Axis(Rotary)	----		(00[H])		<input type="checkbox"/> Input <input type="checkbox"/> OutPut	
	02 Control Axis(Rotary)	----		(01[H])	8080 - 80FF[H]	<input type="checkbox"/> Input <input type="checkbox"/> OutPut	
	03 Control Axis(Rotary)	----		(02[H])	8100 - 817F[H]	<input type="checkbox"/> Input <input type="checkbox"/> OutPut	
	04 Control Axis(Rotary)	----		(03[H])	8180 - 81FF[H]	<input type="checkbox"/> Input <input type="checkbox"/> OutPut	
	05 Control Axis(Rotary)	----		(04[H])	8200 - 827F[H]	<input type="checkbox"/> Input <input type="checkbox"/> OutPut	
	06 Control Axis(Rotary)	----		(05[H])	8280 - 82FF[H]	<input type="checkbox"/> Input <input type="checkbox"/> OutPut	
07 Control Axis(Rotary)	----		(06[H])	8300 - 837F[H]	<input type="checkbox"/> Input <input type="checkbox"/> OutPut		
08 Control Axis(Rotary)	----		(07[H])	8380 - 83FF[H]	<input type="checkbox"/> Input <input type="checkbox"/> OutPut		

【Support Version】

Controller

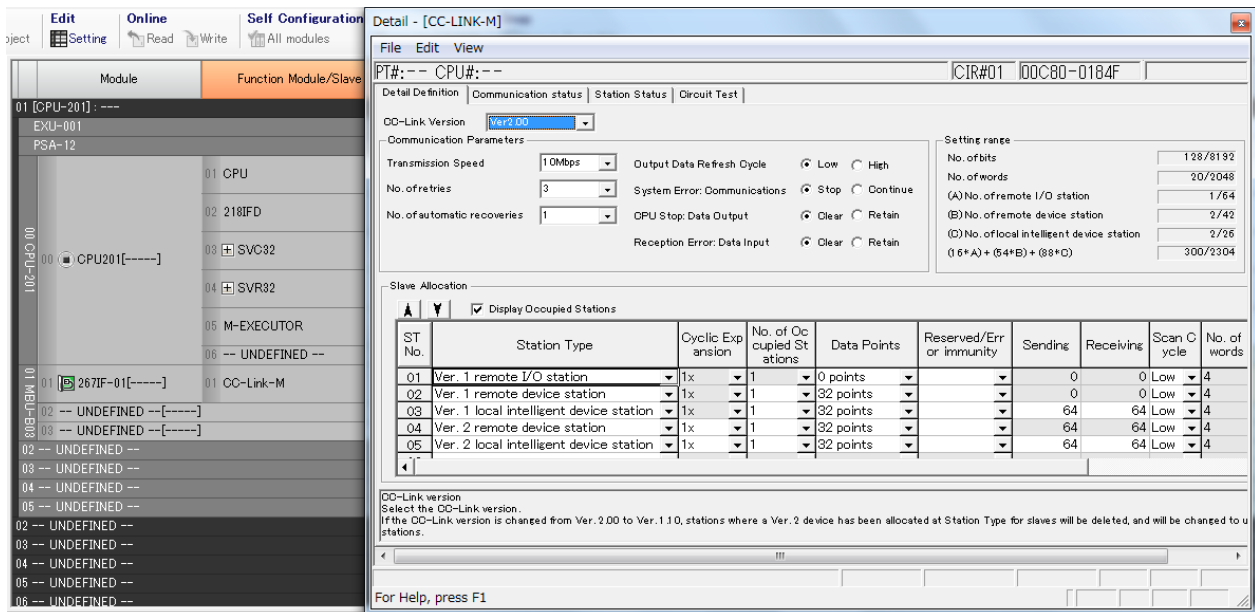
Controller	Support Version
MP3000 Series	It is not dependent on the version. ※About the SigmaWin+ cooperation function via MP, it is due to support in Ver1.12.
MP2000 Series	It is not dependent on the version. ※About the SigmaWin+ cooperation function via MP, it is due to support in Ver2.88.

Option Module

Module	Support Version
SVC-01	It is not dependent on the version. ※About the SigmaWin+ cooperation function via MP, it is due to support in Ver1.12.

No. 4 267IF-01 (CC-Link Master) module was added.

267IF-01 (CC-Link Master) module was added to the option module with which MP3000 series can be equipped.



【Support Version】

Controller

Controller	Support Version
MP3000 Series	Ver1.10 or later
MP2000 Series	Ver2.86 or later

Option Module

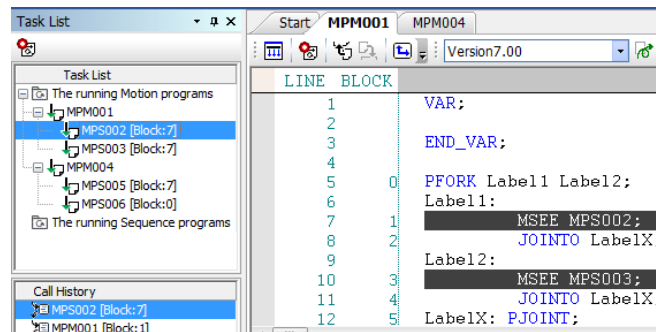
Module	Support Version
267IF-01	Ver1.00 or later

No. 5 The Task List function was added.

The function to monitor the driving status of the motion program was supported.

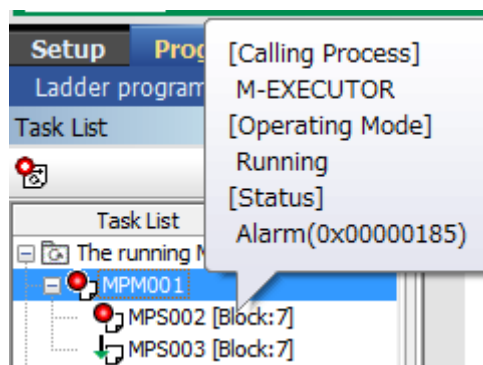
1. The function displays the name of program and step number when being executing it

The main program name under execution, the step number and the subprogram name called from the main program are displayed.



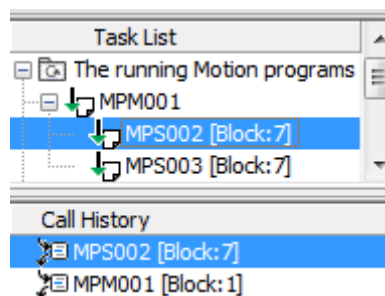
2. The function displays driving status of alarm generation etc.

The status is displayed by using the icon and balloon help of the driving status of the program under execution.



3. The function displays call history of program

The call history of the subprogram called from the main program is displayed.

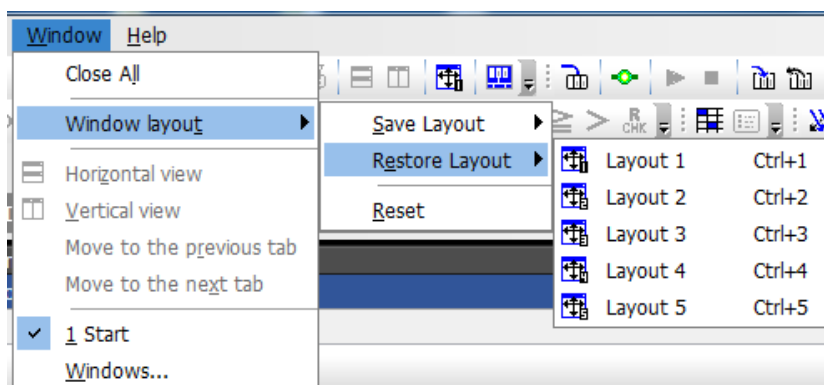


【Support Version】

Controller	Support Version
MP3000 Series	It is not dependent on the version.
MP2000 Series	It is not dependent on the version.

No.6 The maintenance function of the window layout was supported.

The function in which a customer's favorite window layouts, such as a window layout at the time of program development and a window layout at the time of debugging, can be maintained up to five was supported.



【Operation】

It is possible to operate it from "Window layout" of "Window" menu.

The restoration of the layout is restorable in the operation of "Ctrl+1, 2, 3, 4, 5".

【Support Version】

Controller	Support Version
MP3000 Series	It is not dependent on the version.
MP2000 Series	It is not dependent on the version.

No. 7 The representational function of the window layout was added.

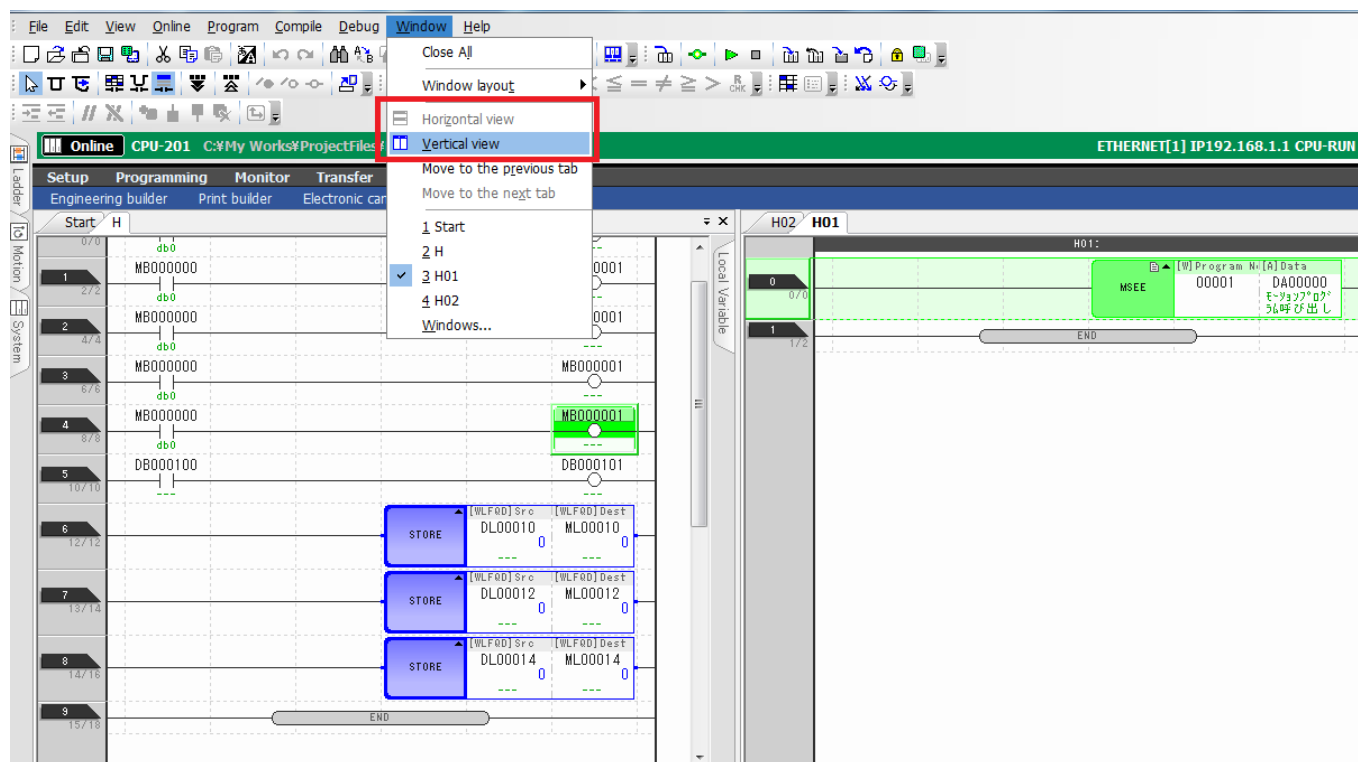
The function which carries out "Horizontal view" and "Vertical view" was added to the modification method of the display of the window which displays Ladder program and Motion program.

○ By pushing "Horizontal view" button, the piecewise representation of the window can be easily carried out to a horizontal direction.

○ By pushing "Vertical view" button, the piecewise representation of the window can be easily carried out to a vertical direction.

【 The operation method 】

It chooses "window" menu => "Horizontal view" or "Vertical view".



【Support Version】

Controller	Support Version
MP3000 Series	It is not dependent on the version.
MP2000 Series	It is not dependent on the version.

No. 8 The system monitor function was strengthened.

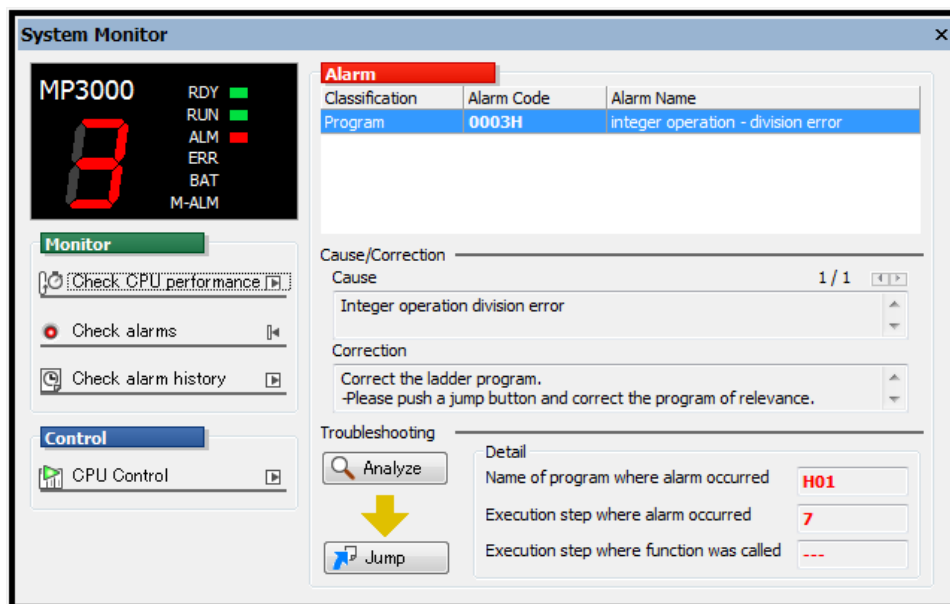
The following function was added about the system monitor function.

1. The alarm integration management function

The system monitor function manages the error and the alarm that occurs by the controller and the SERVOPACK, and displays the cause and the correction of the alarm. Moreover, the alarm is displayed in the category based on the content of the alarm.

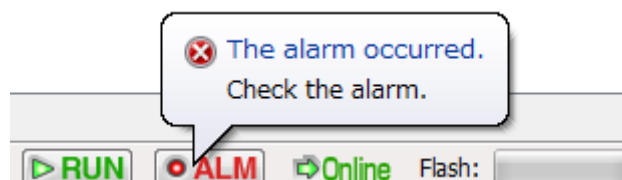
Category display of alarm

Category	Content of alarm
CPU	CPU error
	Battery alarm
Program	Ladder program error
	Motion program alarm
Module	Axis alarm (motion module alarm)
	Servo alarm
	I/O alarm (communication module)



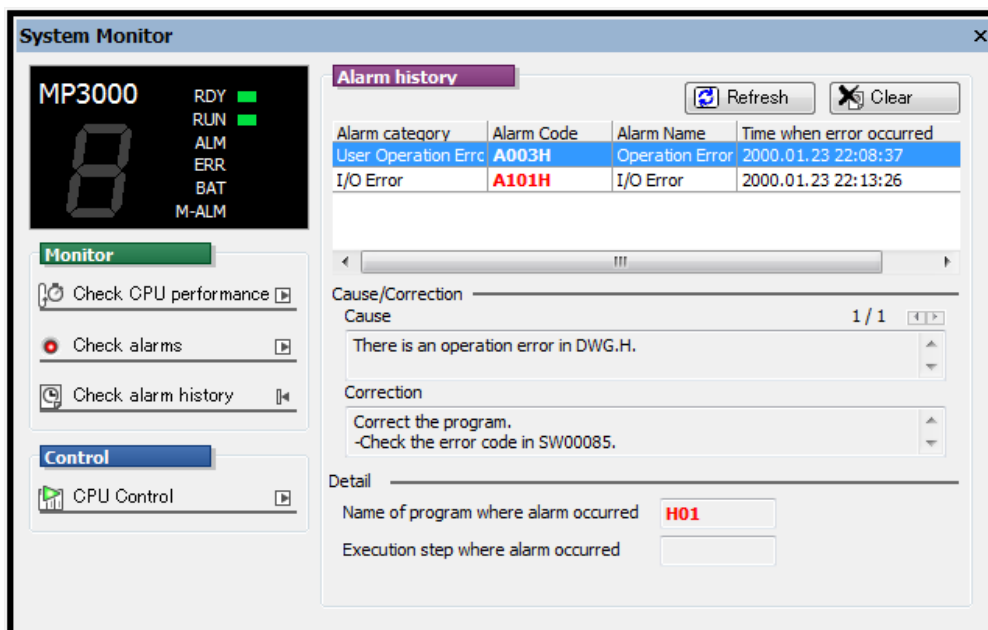
2. The status display function to observe error and alarm

The function to always observe the developmental state of the error and the alarm displayed in the statusbar was added.



3. The alarm history function (Only the MP3000 series).

The alarm history function to add newly was added as MP3000 series controller. The content of the alarm can be confirmed going back up to 100.



【Support Version】

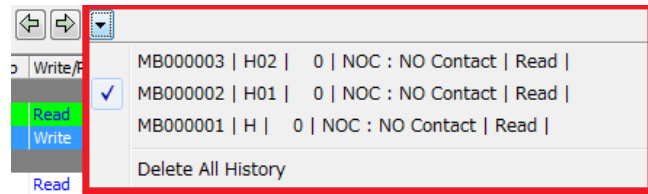
Controller	Support Version
MP3000 Series	It is not dependent on the version.
MP2000 Series	It is not dependent on the version.

No. 9 The Cross Reference function was strengthened.

The following function was added to the Cross Reference function.

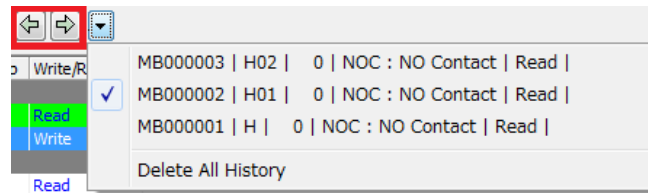
1. Maintenance function of retrieval result history

It is a function to maintain the retrieval result of the cross reference.



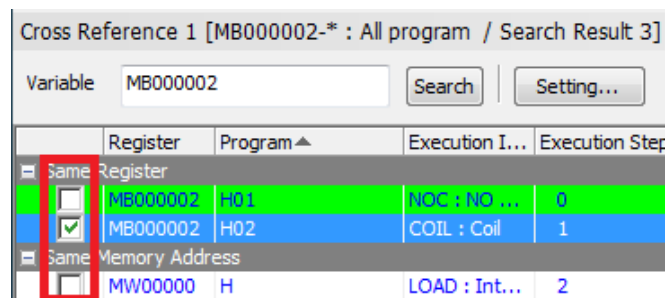
2. Back or forward of result history function

It is a function that returns to the previous retrieval result, or advanced to the following result of the cross reference.



3. Maintenance function of execution existence of confirmation check

It is a function to maintain the check existence of the confirmed register in the check box.



4. "Read search" (Ctrl+Shift+T) and "Write search" (Ctrl+T) function

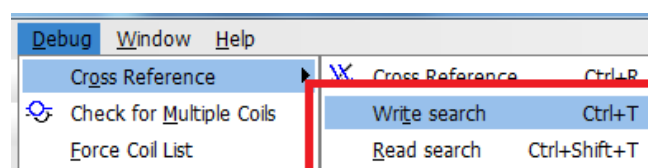
O "Read search" (shortcut key: Ctrl+Shift+T) searches only the register currently used for readings, such as a register currently used for conditional instructions such as NO contact, or a register currently used for the Src side of STORE command.

O "Write search" (shortcut key: Ctrl+T) searches only the register currently used for writing, such as a register currently used for the output command of Coil command etc., or a register currently used for the Dest side of STORE command.

After searching "read search" and "write search", it is possible to refer to using "Search Next" (shortcut key: F3) and "Search Previous" (shortcut key: Shift+F3) smoothly.

【 The operation method 】

"Debug" menu => "Cross Reference" => "Read search" (Ctrl+Shift+T) or "Write search" (Ctrl+T) is chosen.



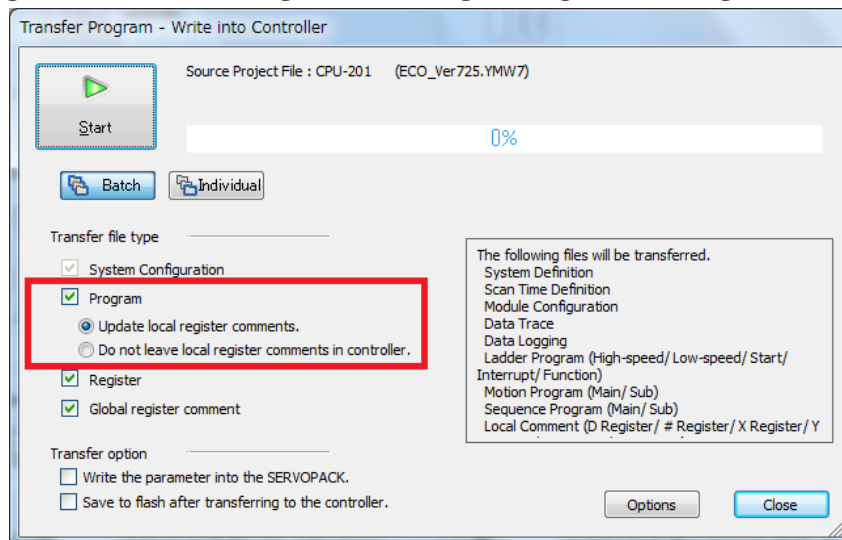
【Support Version】

Controller	Support Version
MP3000 Series	It is not dependent on the version.
MP2000 Series	It is not dependent on the version.

No. 10 The Transfer function has been improved.

In the Transfer, the setting method of the transfer file type of "Program" and "Local register comment" were changed. The "Comment" was changed into the "Global register comment", and the item for "Local register comment" was newly added.

- The "Comment" was changes into "Global register comment."
- About the "Local register comment", it changed so that it might arrange to the "Program" subordinate.



【MPE720 Ver7.24 or before】

Transfer file	Check box	Operation
Program	Those with a check	"Program" is transmitted to destination.
Comment	Those with a check	"Local register comment" is transmitted to destination.

Transfer file	Check box	Operation
Program	Those with a check	"Program" is transmitted to destination.
Comment	With no check	"Local register comment" of destination will be in an empty state.

Transfer file	Check box	Operation
Program	With no check	"Program" is not transmitted to destination.
Comment	Those with a check	"Local register comment" is not transmitted to destination.

【MPE720 Ver7.26】

Transfer file	Check box	Operation
Program	Those with a check	"Program" is transmitted to destination.
Update local register comments.	Those with a check	"Local register comment" is transmitted to destination.

Transfer file	Check box	Operation
Program	Those with a check	"Program" is transmitted to destination.
Do not leave local register comments in Controller.	Those with a check	"Local register comment" of destination will be in an empty state.

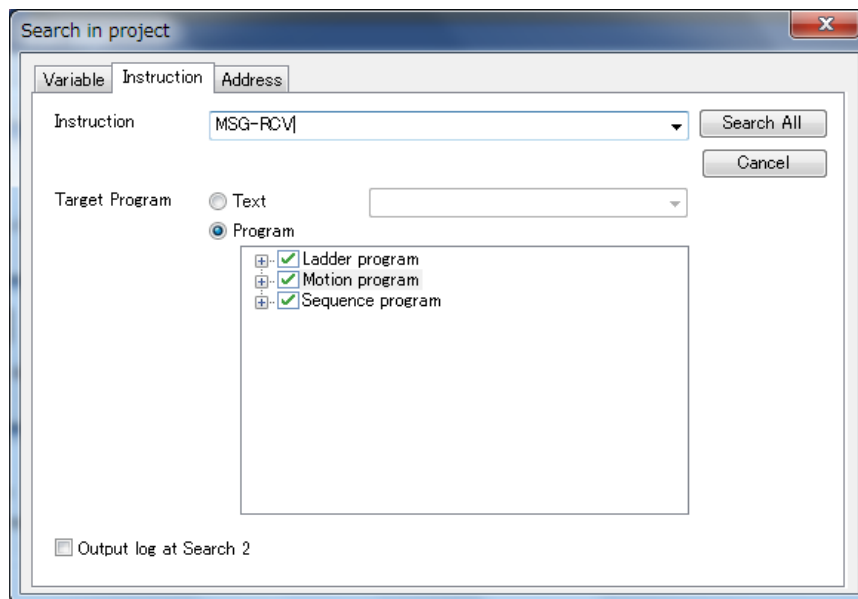
【Support Version】

Controller	Support Version
MP3000 Series	It is not dependent on the version.
MP2000 Series	It is not dependent on the version.

No. 11 The search in project function was strengthened.

In the search in project function, "Instruction search" function was added.

– The object of the instruction search is Ladder instruction.

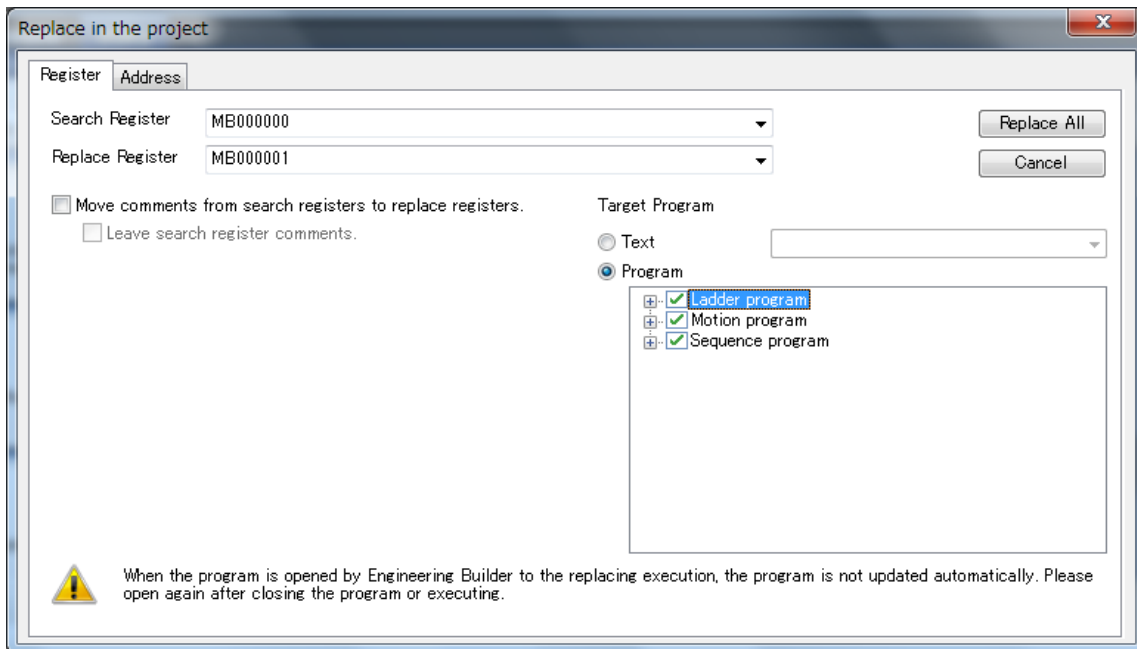


【Support Version】

Controller	Support Version
MP3000 Series	It is not dependent on the version.
MP2000 Series	It is not dependent on the version.

No. 12 The replace in project function has been improved.

Until now, in "Replace in project" function, because the replace operation of the register of the CP ladder was not able to be done, it has improved it.



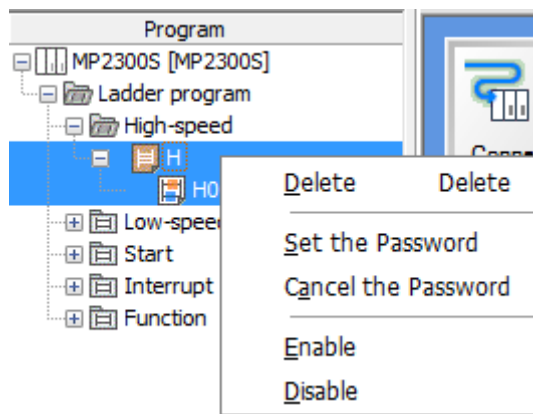
【Support Version】

Controller	Support Version
MP3000 Series	It is not dependent on the version.
MP2000 Series	It is not dependent on the version.

No. 13 The editing operation of two or more programs has been improved.

It has improved to be able to operate the following operation at the same time about two or more programs.

1. Deletion operation of program
2. Set and cancel operation of program password
3. Enable and Disable operation of program



【Support Version】

Controller	Support Version
MP3000 Series	It is not dependent on the version.
MP2000 Series	It is not dependent on the version.

No. 14 The “Display in axis selected” has been improved.

It has been improved so that the Logical Axis Name assigned by the Group Definition displays in the “Display in axis selected” of the Test Run function, the Axis Setup Wizard function, and the Module Configuration.

1	2	*	Address	A1 Circuit#01 Axis#01 SGDV-MDA02**M3* 【Initial value】	A1 Circuit#01 Axis#01 SGDV-MDA02**M3*	B1 Circuit#01 Axis#02 SGDV-MDA02**M3*	C1 Circuit#01 Axis#03 SGDV-MDA02**M3*
				<input type="checkbox"/> Select All <input type="checkbox"/> Reflectio	Update	Update	Update
+	0	:	Run command setting	0W8000	0000[H]	0000[H]	0000[H]
+	1	:	Mode setting 1	0W8001	0000[H]	0000[H]	0000[H]
+	2	:	Mode setting 2	0W8002	0000[H]	0000[H]	0000[H]
+	3	:	Function setting 1	0W8003	0011[H]	0011[H]	0011[H]
+	4	:	Function setting 2	0W8004	0033[H]	0033[H]	0033[H]
+	5	:	Function setting 3	0W8005	0000[H]	0000[H]	0000[H]
+	6	:	M-III Vendor Specific Servo Comma...	0W8006	0000[H]	0000[H]	0000[H]
	8	:	Motion command	0W8008	0 : No Command	0 : No Command	0 : No Commar
+	9	:	Motion command control flag	0W8009	0000[H]	0000[H]	0000[H]
	10	:	Motion subcommand	0W800A	0 : No Command	0 : No Command	0 : No Commar
	12	:	Torque/Thrust reference setting	0L800C	0[0.01%]	0[0.01%]	0[0.01%

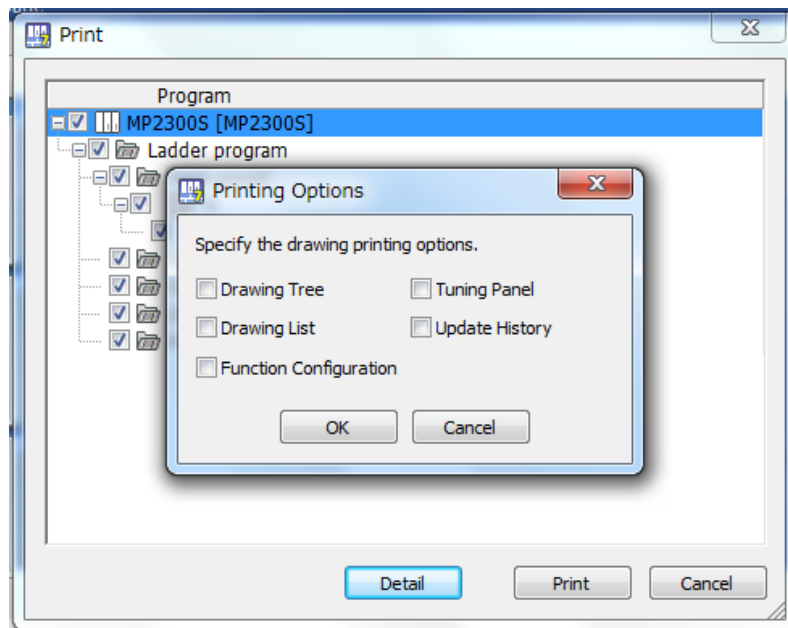
【Support Version】

Controller	Support Version
MP3000 Series	It is not dependent on the version.
MP2000 Series	It is not dependent on the version.

No. 15 The print function has been improved.

In the program print function, to print the following item, it has improved it.

1. Drawing Tree
2. Drawing List
3. Function Configuration
4. Tuning Panel
5. Update History

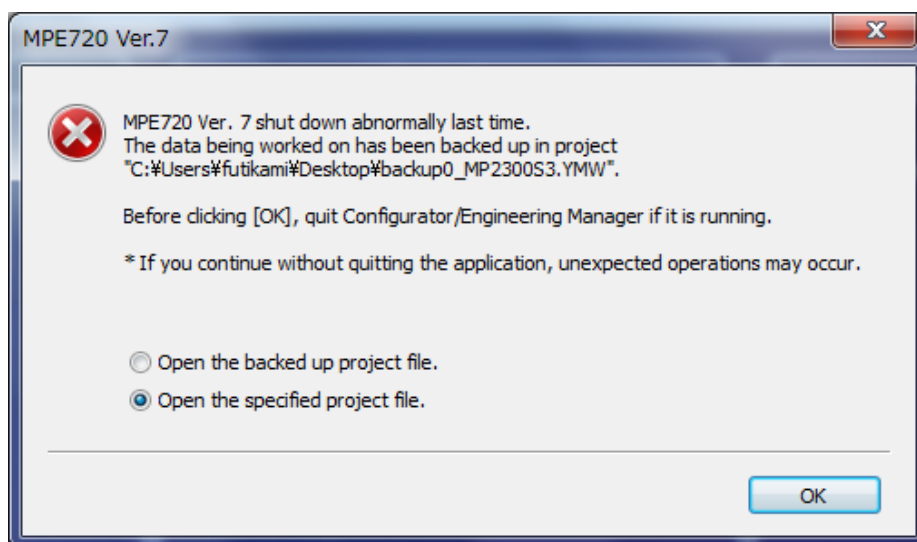


【Support Version】

Controller	Support Version
MP3000 Series	It is not dependent on the version.
MP2000 Series	It is not dependent on the version.

No. 16 The recovery function of the project file was supported.

When the project file of relevance was started when MPE720 terminated abnormally by some factors, the function to restore the project data working last time was added.

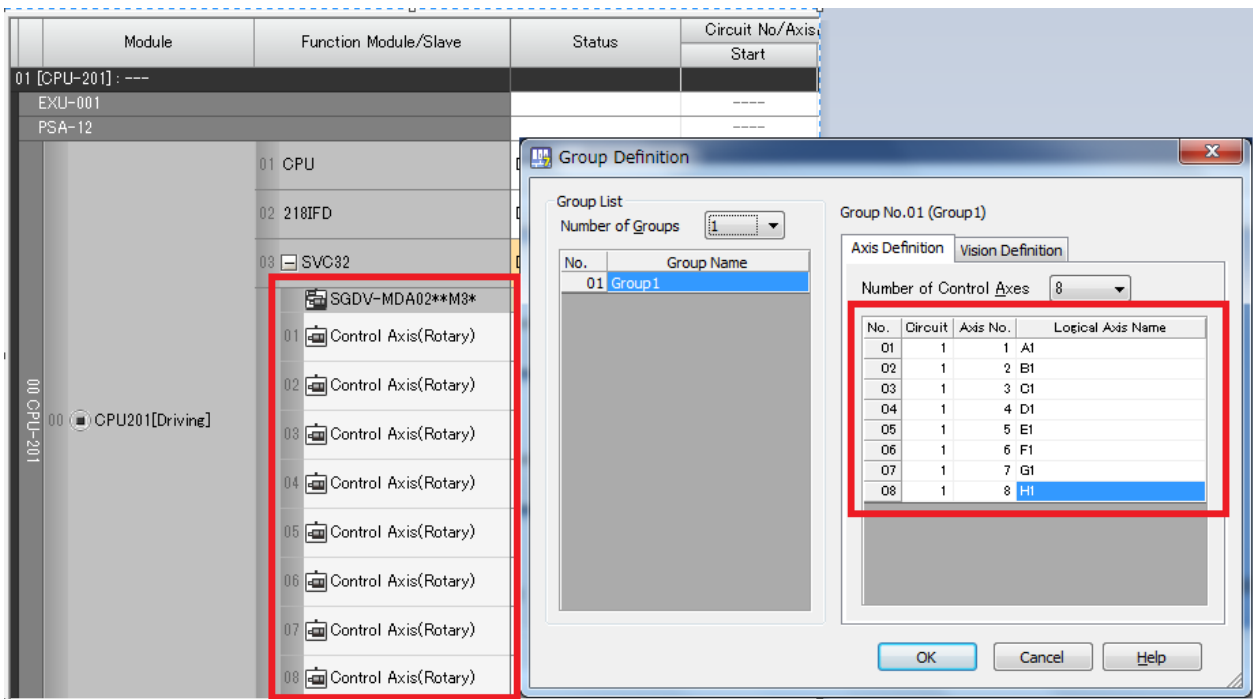


【Support Version】

Controller	Support Version
MP3000 Series	It is not dependent on the version.
MP2000 Series	It is not dependent on the version.

No. 17 The default value of the Group Definition (Axis Variable) has been improved.

Until now, when the Group Definition (Axis Variable) was started, 3 axes (A1, B1, C1) were displayed. It has improved so that the slaves assigned in the Module Configuration is checked, and the default value may be set up



【Support Version】

Controller	Support Version
MP3000 Series	It is not dependent on the version.
MP2000 Series	It is not dependent on the version.

No. 18 The operation of the Module Configuration (MC-Configurator) has been improved.

In the Module Configuration screen (MC-Configurator), it has improved about the following operation.

1. The improvement of the Module Configuration

In the Module Configuration, the function which moves a station number was added by drag-and-drop operation about the slave devices assigned to motion control modules, such as SVB-01 and SVC-01.

2. The improvement of the exclusive control of write-in operation of the Module Configuration screen and parameter screens (Fixed Parameter screen etc.).

When parameter screen was being opened, the operation of editing and writing in the Module Configuration screen is impossible. So, this has been improved.

3. The improvement of the number of the maximum indication axes of servo parameter / servo monitor.

Until now, although the number of the maximum indication axes of the servo parameter / servo monitor had become to 4 axes, restriction of the number of the maximum indication axes was removed.

4. The improvement of servo monitor.

It changed so that a check might be attached to the check box of a parameter to monitor in Servo Monitor screen.

5. The tab display of parameter screen

It has improved so that the tab of the selected parameter screen may be displayed by list about the tab display of Setting Parameter, Monitor Parameter, Servo Parameter and Servo monitor.

【Support Version】

Controller	Support Version
MP3000 Series	It is not dependent on the version.
MP2000 Series	It is not dependent on the version.

No. 19 The communications setting screen has been improved.

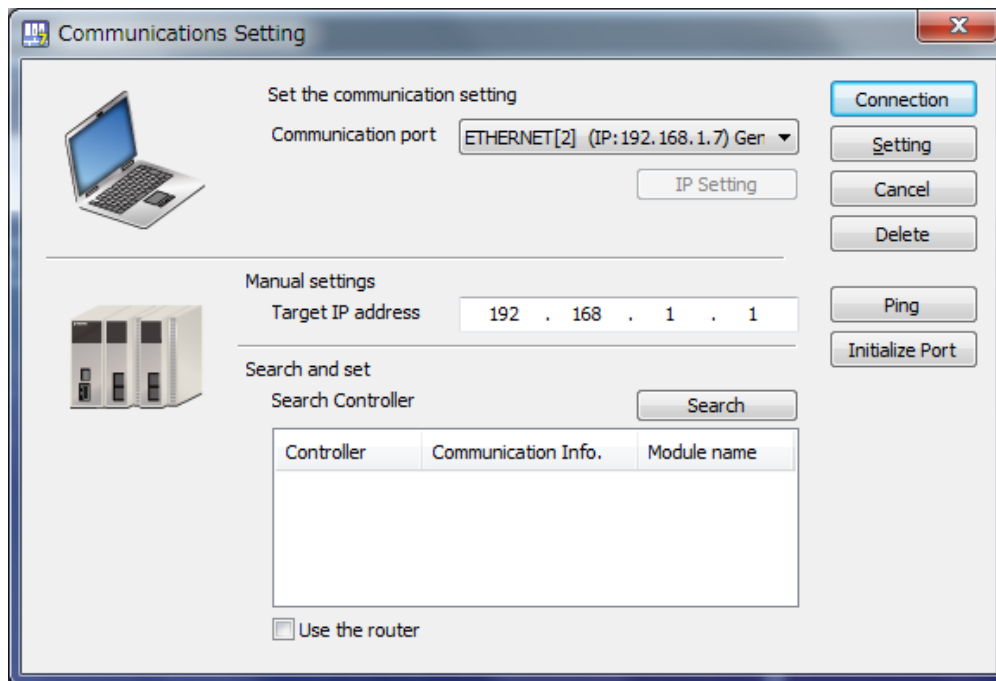
The following improvement was executed in the Ethernet port on the communications setting screen.

1. Ping command issue function

The Ping command issue function is a function in which the Ping command is published to the controller set as the "Target IP address" and it can be checked whether Ethernet communication is effective

2. Initialize port function

It is a function to initialize the Ethernet communication port when the phenomenon is generated though the port initialization function might not be able to be connected when trying to connect it with a different controller who has same IP address.



【Support Version】

Controller	Support Version
MP3000 Series	It is not dependent on the version.
MP2000 Series	It is not dependent on the version.

No. 20 The default value of the Variable Display Format was changed.

The default value of the "Variable Display Format" of Variable window was changed.
It can change on the variable tab of Environment Setting.

【 MPE720 Ver7.24 or before 】

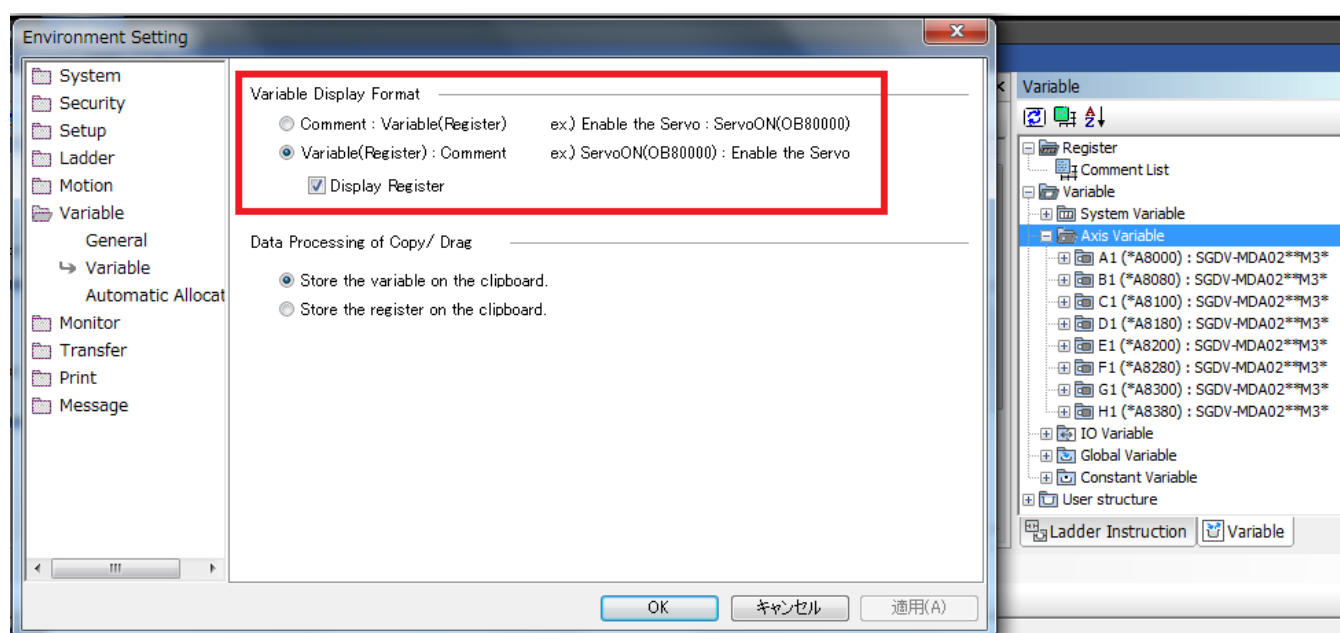
"Comment: Variable (Register)"

【 MPE720 Ver7.26 】

"Variable (Register): Comment"

【 Modification procedure 】

The "property" of a context menu is chosen in Variable window, and it can change on "Environment Setting" screen.



【Support Version】

Controller	Support Version
MP3000 Series	It is not dependent on the version.
MP2000 Series	It is not dependent on the version.

No. 21 The starting timing of the Communication Platform was changed.

The starting timing was changed so that the Communication Platform might be started at MPE720 Ver7 start-up. Until now, since the Communication Platform was started to the timing on which the communication connection button was pushed, there was a case where communication went wrong, at the time of the 1st communication connection, without completing starting of the Communication Platform.

【Support Version】

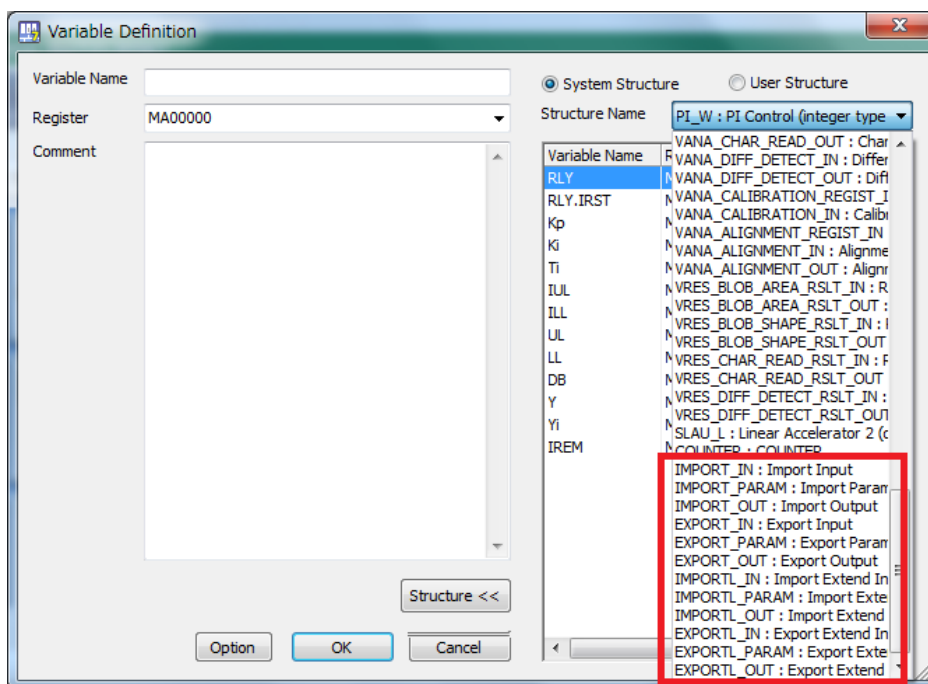
Controller	Support Version
MP3000 Series	It is not dependent on the version.
MP2000 Series	It is not dependent on the version.

No.22 The “IMPORT”, “EXPORT”, “IMPORTL”, and “EXPORTL” were added to the System Structure.

The “IMPORT”, “EXPORT”, “IMPORTL”, and “EXPORTL” were added to the System Structure of the variable window.

【 The operation method 】

“Global Variable” => “Address” is chosen in Variable window, and “Add” of a context menu is chosen.



【Support Version】

Controller	Support Version
MP3000 Series	It is not dependent on the version.
MP2000 Series	It is not dependent on the version.

No.23 The MC-Configurator start operation of the project to which the project password is set has been improved.

When the project file to which the project password was set was opened and MC-Configurator was started, the input of the project password had become the operation demanded again, but since the password was entered once, it has improved so that an input may not be required.

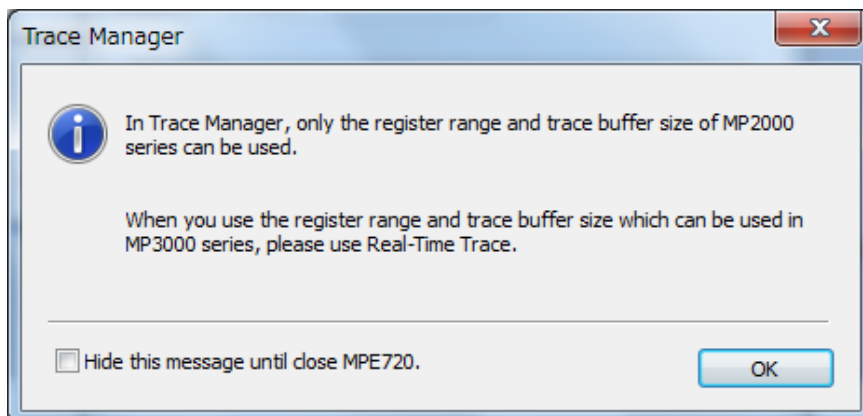


【Support Version】

Controller	Support Version
MP3000 Series	It is not dependent on the version.
MP2000 Series	It is not dependent on the version.

No.24 The message was added to the Trace Manager function.

When the trace manager started, the message of the range of use was added because the register type (G register), the data type (Quad and Double type), and ranges of the register (register of MW65535 or more) added in the MP3000 series were not able to be used.

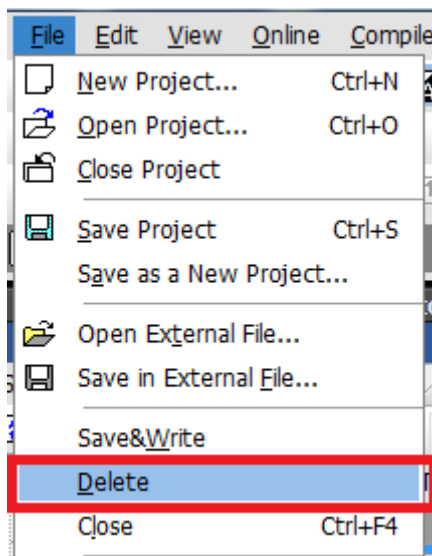


【Support Version】

Controller	Support Version
MP3000 Series	It is not dependent on the version.
MP2000 Series	It is not dependent on the version.

No.25 The Real-Time trace function has been improved.

In the Real-Time trace function, since the delete function of the trace definition was not able to be used, this has been improved.



【Support Version】

Controller	Support Version
MP3000 Series	It is not dependent on the version.
MP2000 Series	It is not dependent on the version.

No.26 The conversion operation from the MAL file to the YMW file has been improved.

In the conversion operation from the MAL file to the YMW file, since the error message of "0x80010105" was displayed and conversion might go wrong when combine symbols and comments was chosen, this has been improved.

– When "Import of Ver5 CMT file" operation is executed, it is the same.

【Support Version】

Controller	Support Version
MP3000 Series	It is not dependent on the version.
MP2000 Series	It is not dependent on the version.

No.27 The MC-Configurator start operation has been improved.

The error message is displayed when MC-Configurator starts and because it was not likely to be able to start, this has been improved.



【Support Version】

Controller	Support Version
MP3000 Series	It is not dependent on the version.
MP2000 Series	It is not dependent on the version.

No.28 The compile operation of the ladder program has been improved.

In the ladder program, because the circuit did not operate correctly when the array register or the subscript is used for the rising edge no contact instruction, it has improved it to output the error message when such a circuit is united.

【 object instruction 】

1. Rising Edge NO Contact
2. Rising Edge NC Contact
3. Falling Edge NO Contact
4. Falling Edge NC Contact
5. Rising Edge Detection Coil
6. Falling Edge Detection Coil

【Support Version】

Controller	Support Version
MP3000 Series	It is not dependent on the version.
MP2000 Series	It is not dependent on the version.

No.29 The compile operation of the IMORTL/EXPORTL command has been improved.

1. Since there was a phenomenon used as a compile error when the project file of MP3000 series was newly created and the IMORTL/EXPORTL command was used for the Ladder program in the off-line. So, this has been improved.
2. When IMPORTL and EXPORTL of the ladder instruction was ordered, because the error of "8104 hex: Parallel execution channel number out of range error" might occur if 1-32767 was set to the transfer size, this was improved.

【Support Version】

Controller	Support Version
MP3000 Series	Ver1.08 or later
MP2000 Series	Unsupported.

No.30 The compile operation of the motion program has been improved.

The error message "0xA0A058EC: Failed to compile for user structure." is displayed when the motion program was compiled when the name of "ch" was used for the structure name of the user structure and it was not likely to be able to compile, this has been improved.

【Support Version】

Controller	Support Version
MP3000 Series	It is not dependent on the version.
MP2000 Series	It is not dependent on the version.

No.31 The Cross Reference operation of the Local registers has been improved.

If the address type local register was searched with the cross reference function, since local registers other than the drawing of targeted search might be displayed on search results. So, this has been improved.

Example)

In H drawing, "DB00000" is used for the coil command.

In H01 drawing, "DA00000" is used for the MSEE command.

In the Cross Reference function, when "DB00000" of H drawing is searched, "DA00000" currently used in H01 drawing will be displayed on the Same Memory Address of search results.

The screenshot displays a software interface for a ladder logic program. The main window shows a ladder logic diagram with several rungs. Rung 5 contains a coil command labeled 'DB000101'. Below the diagram, a 'STORE' instruction is visible, with source and destination registers 'DL00010' and 'ML00010'. A search results window titled 'Cross Reference 1 [DB000101-H / Search Result 2]' is open. It shows a search for variable 'DB000101'. The results are categorized into 'Same Register' and 'Same Memory Address'. Under 'Same Register', 'DB000101' is listed with program 'H' and instruction 'COIL : Coil' at address 11. Under 'Same Memory Address', 'DL00010' is listed with program 'H' and instruction 'LOAD : Integer Entry' at address 12.

Register	Program	Execution Instruction	Execut
Same Register			
DB000101	H	COIL : Coil	11
Same Memory Address			
DL00010	H	LOAD : Integer Entry	12

【Support Version】

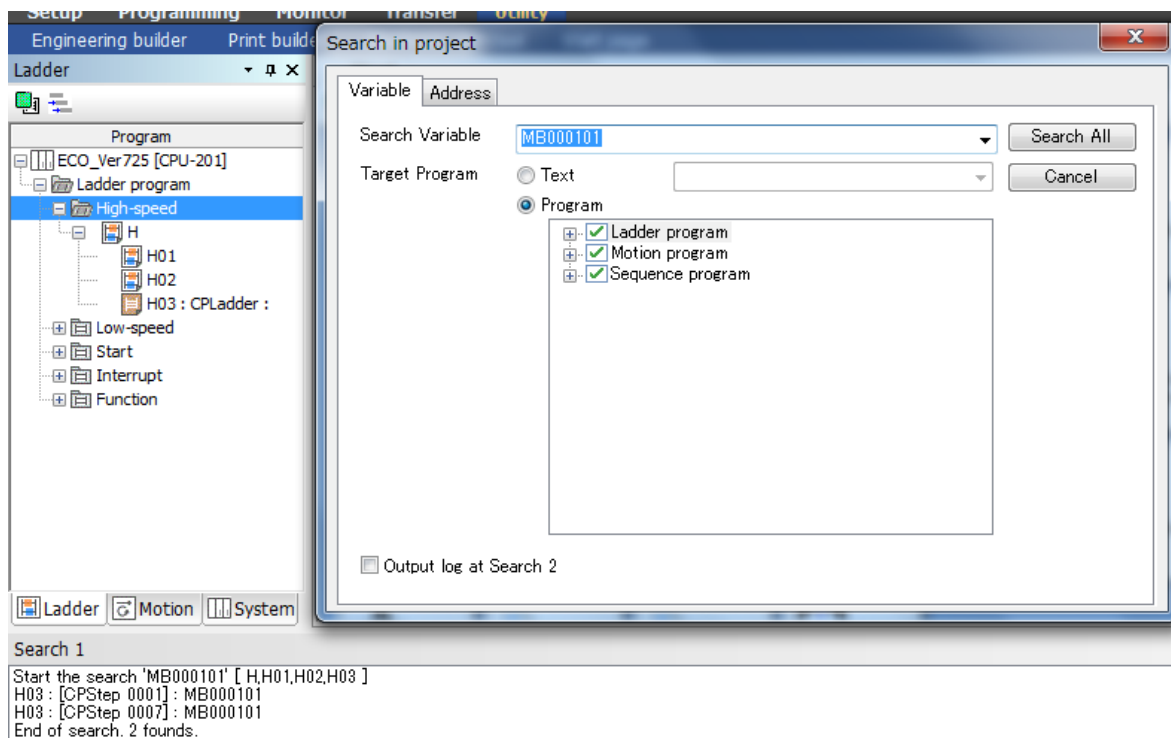
Controller	Support Version
MP3000 Series	It is not dependent on the version.
MP2000 Series	It is not dependent on the version.

No.32 The operation of the “Search in Project” function has been improved.

In the “Search in Project” function, when the bit type register currently used in CP Ladder was searched, since there was a phenomenon in which search results were displayed in the range of the word type register. So, this has been improved.

Example)

In H drawing of CP Ladder, “MB00000” is used for the NO Contact command and “MB00001” is used for the coil command. In the Search in Project (Variable tab) function, if “MB00000” is searched, “MB00000” and “MB00001” will be displayed on search results.



【Support Version】

Controller	Support Version
MP3000 Series	It is not dependent on the version.
MP2000 Series	It is not dependent on the version.

No.33 The operation of “Using register” display of the register list has been improved.

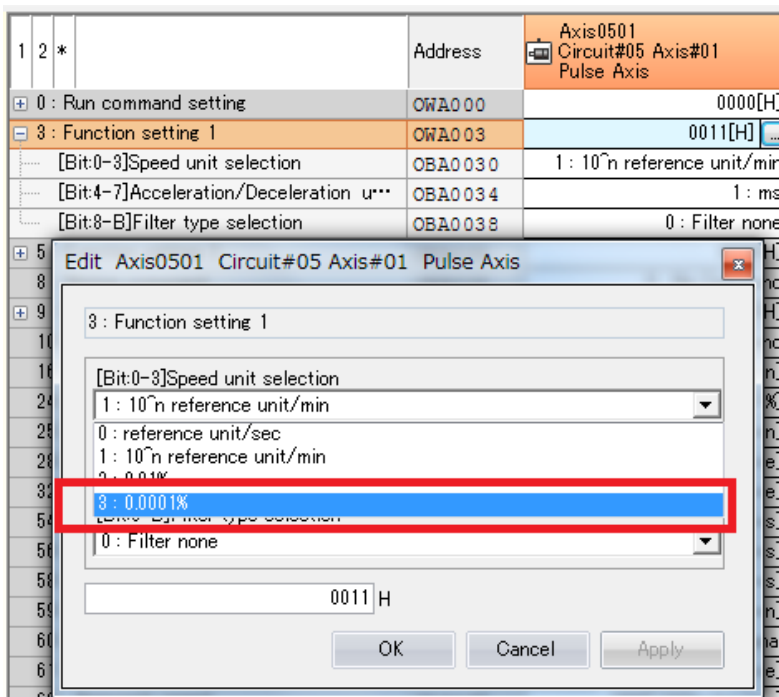
In the function of the register map of the register list, because there was a phenomenon that an unused register is displayed as a use register about local registers, this has been improved.

【Support Version】

Controller	Support Version
MP3000 Series	It is not dependent on the version.
MP2000 Series	It is not dependent on the version.

No.34 The "0.0001%" was added to "Speed unit selection" of the Setting parameter of PO-01 module.

The "Preset value =3 (0.0001%)" was added to "Speed unit selection" (OWxx03 Bit0-3) of the "Function setting 1" of the Setting parameter of PO-01 module.



【Support Version】

Controller	Support Version
MP3000 Series	It is not dependent on the version.
MP2000 Series	It is not dependent on the version.

No.35 The display of the detailed definition screen of the AI-01 and AO-01 modules has been improved.

In the detailed definition of AI-01 and AO-01 of the module configuration definition, because the "unit display" character piece and was displayed, this has been improved.

【Support Version】

Controller	Support Version
MP3000 Series	It is not dependent on the version.
MP2000 Series	It is not dependent on the version.

No.36 The transfer operation has been improved.

Because transmission might go wrong when individual transmission of the transfer function in the project file which set up the logon user name of 16-byte length, this has been improved.

【Support Version】

Controller	Support Version
MP3000 Series	It is not dependent on the version.
MP2000 Series	It is not dependent on the version.

No.37 The operation of the axis variable comment has been improved.

Because the comment was not correctly displayed when the comment of 32 bytes is set to the axis variable comment, this has been improved.

【Support Version】

Controller	Support Version
MP3000 Series	It is not dependent on the version.
MP2000 Series	It is not dependent on the version.

No.38 The operation of the trigger waiting state of the Real-Time trace function has been improved.

In the Real-Time trace function, because there was a phenomenon that the error message is displayed when it passed for a definite period of time in the state of the waiting for a trigger, this has been improved.

【Support Version】

Controller	Support Version
MP3000 Series	It is not dependent on the version.
MP2000 Series	It is not dependent on the version.

No.39 The print function has been improved.

Because D register comment used in the CP ladder was not occasionally printed, this has been improved.

【Support Version】

Controller	Support Version
MP3000 Series	It is not dependent on the version.
MP2000 Series	It is not dependent on the version.

No.40 The print of constant variable (C register) has been improved.

In the constant variable (C register) of MPE720 Ver7, because there is a phenomenon that the print manager is frozen if the Float type register is added to the constant variable, this has been improved.

【Support Version】

Controller	Support Version
MP3000 Series	It is not dependent on the version.
MP2000 Series	It is not dependent on the version.