

Upgrade Information of MPE720 Version 7.24

1.Added and Improved Functions

1.1 Ver.7.24 Upgrade Information

Items added and features improved from MPE720 version 7.23 to version 7.24 are as follows.

No.	Feature	Classification
1	267IF-01 (CC-Link Master) module was added.	Add function
2	The mode 4 was added to the ACCMODE command of Motion Program.	Add function
3	"Non FD" was added to the setting item of the transmission protocol of 217IF-01 module.	Improvement
4	The variable auto-registration function of the Ladder program was supported.	Improvement
5	The copy option of the register comment was supported in the replace function of Ladder editor.	Improvement
6	The move option of the register comment was supported in the Replace in the Project.	Improvement
7	The replace function of the motion register was supported in the Replace in the Project.	Improvement
8	The replace function of Bit type registers has been improved in the Replace in the Project.	Improvement
9	The export function of variable and comment has been improved.	Improvement
10	Conversion operation of symbols has been improved.	Improvement
11	The compatible mode of MPE720 Ver6 of project files were added to the Environment Setting.	Improvement
12	The Register Map function was added to Comment List function.	Improvement
13	The display improvement of the output log of the Search function was carried out.	Improvement
14	The improvement of the export and import function of the Tuning panel was executed.	Improvement
15	The improvement of the sampling period of Real-Time Trace function was carried out.	Improvement
16	The shortcut key of Ladder program was added.	Improvement
17	The improvement of operation of the program selection check tree was carried out.	Improvement
18	The compile operation of Ladder program has been improved.	Improvement
19	The compile operation of "Compile All Programs" has been improved.	Improvement
20	The operation of "Open program" of Ladder program has been improved.	Improvement
21	The input operation of the FUNC command of Ladder program has been improved.	Improvement
22	The improvement of the "Axis Type Setting" screen of the Axis Setup Wizard function was carried out.	Improvement
23	The display improvement of the Edit Parameter dialog of Ladder editor was carried out.	Improvement
24	The improvement of the Search of Ladder editor was carried out.	Improvement
25	The display improvement of Motion Command of Axis Monitor was carried out.	Improvement
26	The improvement of saving a project file has been carried out.	Improvement
27	The conversion operation to a Ver6 compatible project file (extension: YMW) from the compressed file (extension: MAL) of MPE720 Ver5 has been improved.	Improvement

28	The operation Saving of the SVB module of MC-Configurator has been improved. (PART 1)	Improvement
29	The operation Saving of the SVB module of MC-Configurator has been improved. (PART 2)	Improvement
30	The display improvement of the SERVOPACK version of Servo Parameter screen was carried out.	Improvement
31	The improvement of operation at the time of communication disconnection of a communication platform was carried out.	Improvement

(*): When MPE720 Ver.7 before MPE720 Ver.7.11 is already installed in Windows Vista and Windows 7, it may not operate for the newest information of the servo model addition by the axial setup wizard function (the newest information added into the database) updated by after MPE720 Ver.7.13.

Please refer to the following page for operating procedures.

【About the restriction matter when using MPE720 Ver.7 in Windows Vista and Windows 7】

When MPE720 Ver.7 is used in Windows Vista and Windows 7, the following phenomena might be generated.

<Phenomena>

When MPE720 Ver.7 before MPE720 Ver.7.11 is already installed in Windows Vista and Windows 7, it may not operate for the newest information of the servo model addition by the axial setup wizard function (the newest information added into the database) updated by after MPE720 Ver.7.13.

<Measures>

Using a batch file, the following folder is deleted. (*1)

C:\Users\UserName(*2)\AppData\Local\VirtualStore\Program Files(*3)\YASKAWA\MPE720 Ver7

Procedure

1.The batch file enclosed by MPE720 Ver.7 installer is copied to a desktop.

【Download Version】

MPE720Ver7_xxx(*4)\Tools\CleanUp\MPE720Ver7_x86.bat (32bitOS)

MPE720Ver7_xxx(*4)\Tools\CleanUp\MPE720Ver7_x64.bat (64bitOS)

【CD Media Version】

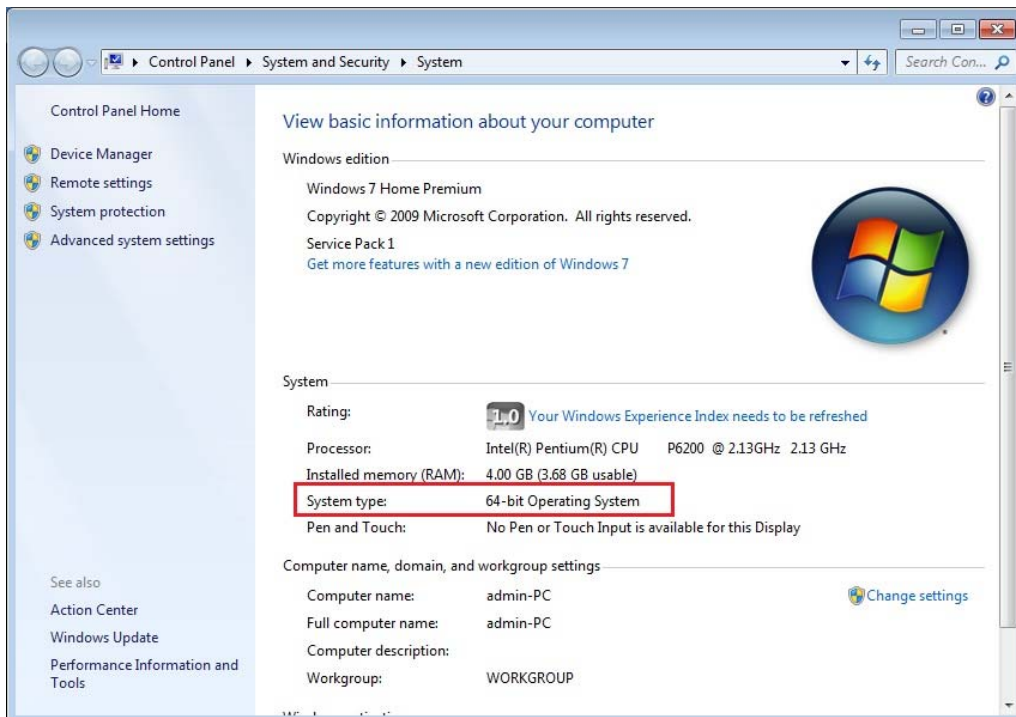
D(*5):\Tools\CleanUp\MPE720Ver7_x86.bat (32bitOS)

D(*5):\Tools\CleanUp\MPE720Ver7_x64.bat (64bitOS)

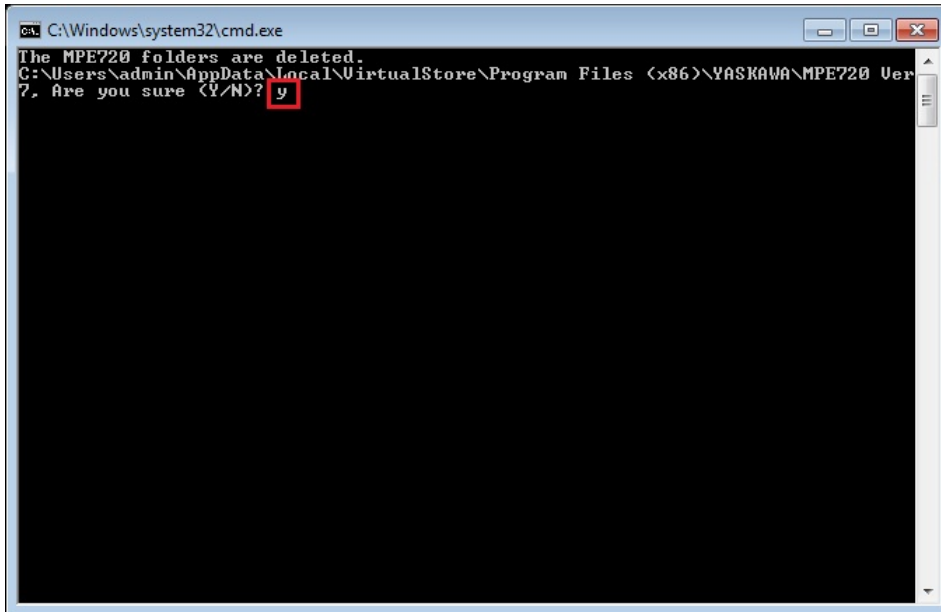
2.The copied batch file is performed.

MPE720Ver7_x86.bat (32bitOS)

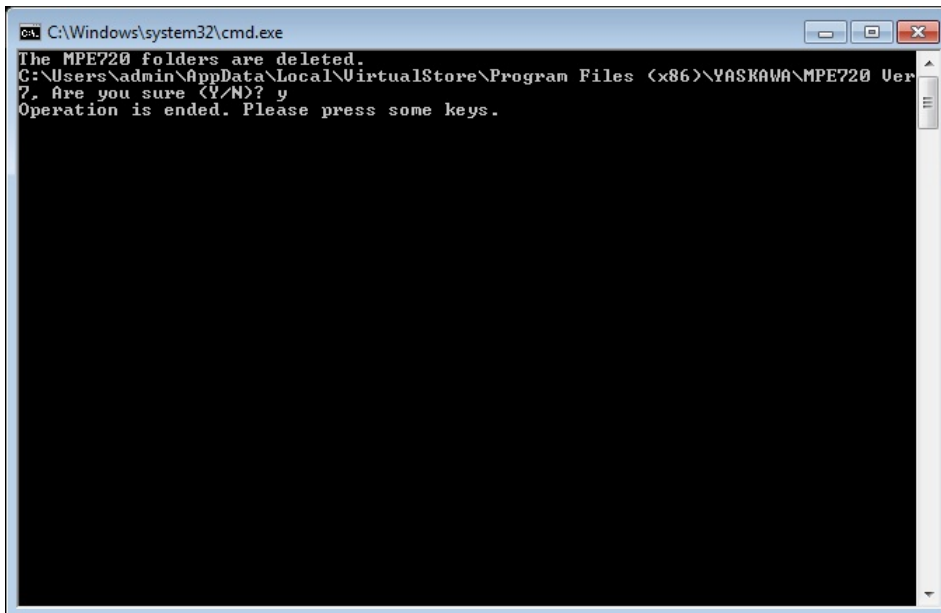
MPE720Ver7_x64.bat (64bitOS)



3. "y" is inputted on a command prompt and the Enter button is pushed.



4. The Enter button is pushed on a command prompt after deletion.



- (*1): When multi-user is using one set of PC, please operate it by each user.
- (*2): The user account name that logs in enters.
- (*3): The path changes by OS.
 - 32bitOS: Program Files
 - 64bitOS: Program Files (x86)
- (*4): The path changes by version.
- (*5): The path changes by CD/DVD drive.
- (*6): When an installation path is changed at the time of MPE720 Ver.7 installation, please delete the "MPE720 Ver7" folder which a folder subordinate has below manually according to the installed path.
 - C:\Users¥UserName(*2)\AppData\Local\VirtualStore

【About compile of the parallel circuit】

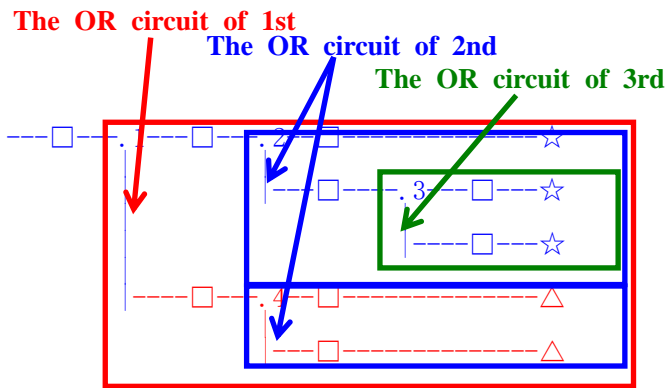
In the Ladder program of MPE720 Ver7 before MPE720 Ver7.23, when the parallel circuit is used, the following phenomena may occur.

<Phenomena>

When the circuit containing the following pattern was created, there was a phenomenon of operating without receiving the condition that the circuit below the OR circuit of 1st class must operate essentially in response to the conditional instruction before the OR circuit of 1st class.

<Measures>

When a phenomenon occurs, please carry out re-compile about the Ladder program in MPE720 Ver7 after MPE720 Ver7.24. Or please carry out again "Compile All Programs" of "Compile" menu.



The OR circuit of 1st class: The OR circuit branched from the bus-bar of language.

The OR circuit of 2nd class: The OR circuit branched out of the OR circuit of 1st class.

The OR circuit of 3rd class: The OR circuit branched out of the OR circuit of 2nd class.

□(Conditional instruction): NO Contact, NC Contact, Coil, instruction(==, !=, >, <), power line (-----) etc.

☆(Output instruction): Coil, Block instruction(Expression, STORE, COPYW) etc

※However, when all ☆ is coil commands, a phenomenon does not occur.

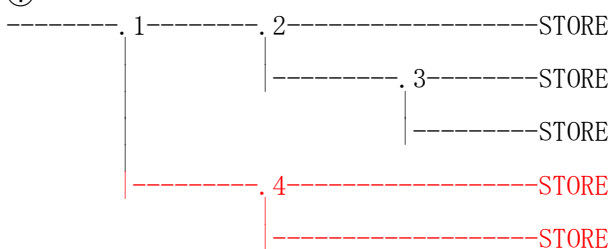
△(Output instruction): Coil, Block instruction(Expression, STORE, COPYW)etc

<Pattern>

Symbol	Instruction
	NO Contact
STORE	STORE instruction
()	Coil

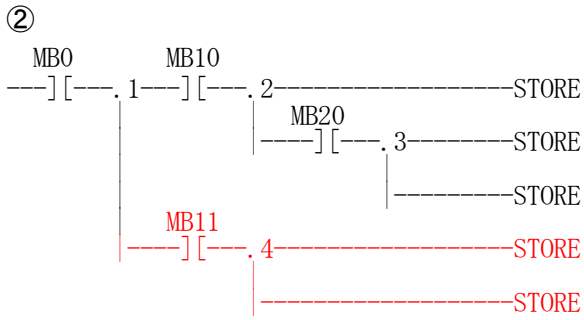
<NG Pattern>

①



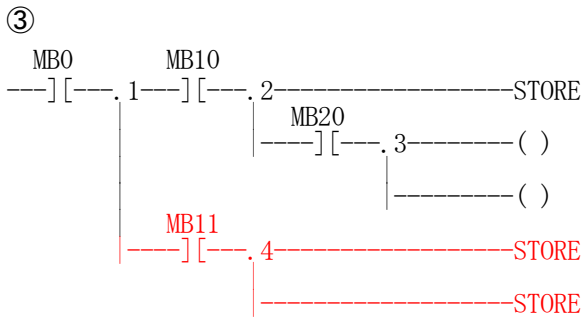
This pattern is minimum circuit pattern.

This is NG.



It is NG even if the minimum circuit pattern has conditional instructions (NO Contact etc.).

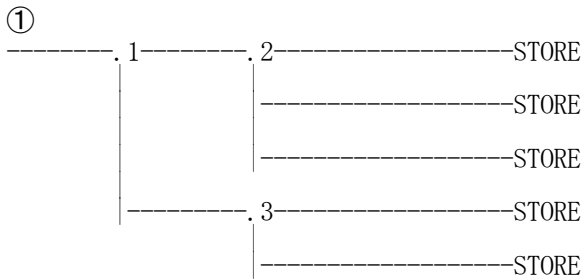
This is NG



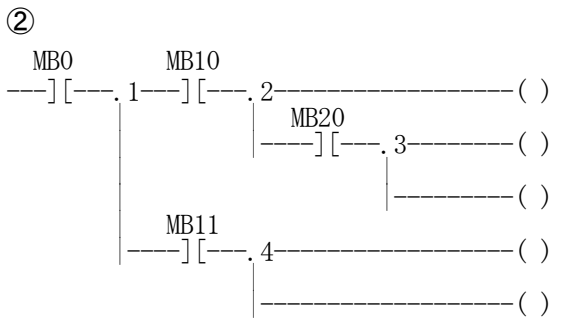
It is NG when there are at least one block commands (STORE command etc.) here.

This is NG

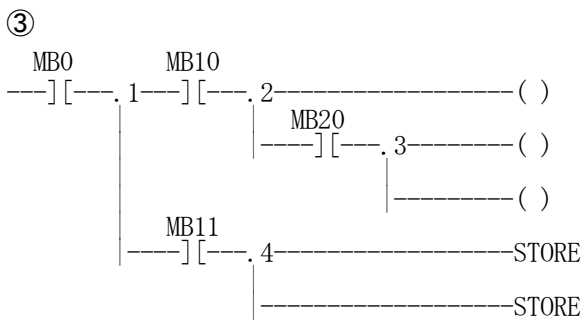
<OK Pattern>



Since it is the OR circuit of 2nd, it is OK.



Since it is the coil altogether, it is OK.



Since it is the coil altogether, it is OK.

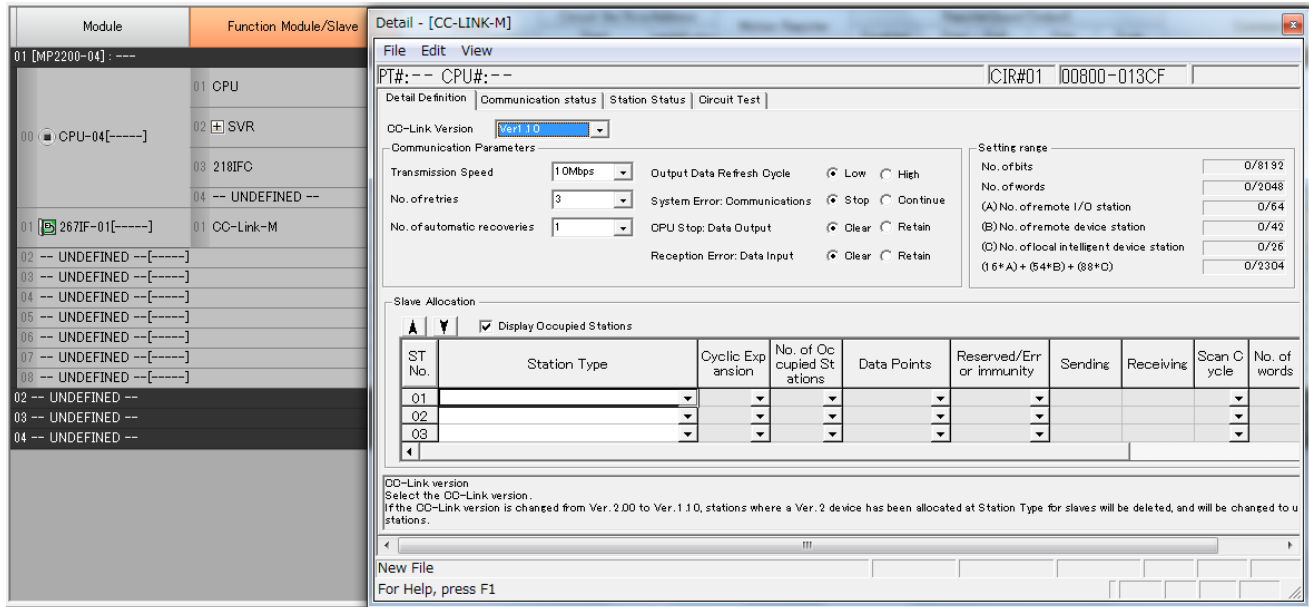
1.2 Past Upgrade Information

No.	Upgrade Information	Remarks
1	MPE720 version 7.11 upgrade information	version 7.10→version 7.11
2	MPE720 version 7.13 upgrade information	version 7.11→version 7.13
3	MPE720 version 7.14 upgrade information	version 7.13→version 7.14
4	MPE720 version 7.20 upgrade information	version 7.14→version 7.20
5	MPE720 version 7.21 upgrade information	version 7.20→version 7.21
6	MPE720 version 7.23 upgrade information	version 7.21→version 7.23

2. Description

No. 1 267IF-01 (CC-Link Master) module was added.

267IF-01 (CC-Link Master) module was added to the option module with which MP2000 series can be equipped.



【Support Version】

Controller

Controller	Support Version
MP3200 Series	Unsupported (It is due to correspond by future upgrade.)
MP2000 Series	Ver2.86 or later

Option Module

Module	Support Version
267IF-01	Ver1.00 or later

No. 2 The mode 4 was added to the ACCMODE command of Motion Program.

The mode 4 was added to the ACCMODE command of Motion Program.

In interpolation command (MVS/MCC/MCW/SKP), the setup of FE is attained.

Moreover, it corresponded to the two following motion program alarms.

①Address M out of range

Item	Description
Alarm Code	31H
Alarm Name	Address M out of range
Description	Designation exceeded the valid range in the ACCMODE command.
Corrective Actions	Review the setting in the ACCMODE command.

②Specified address error

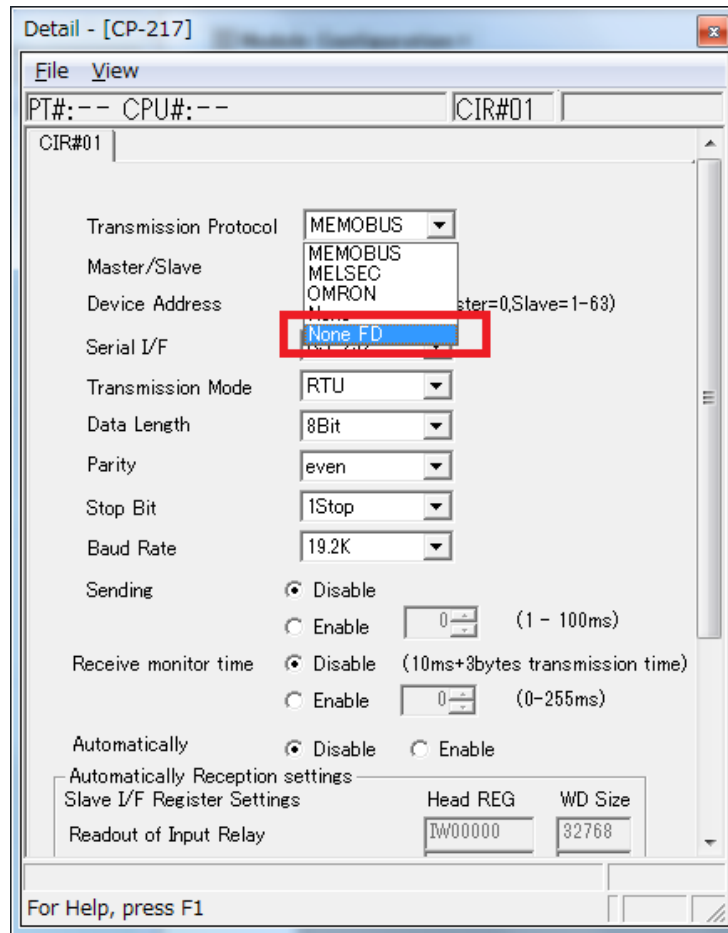
Item	Description
Alarm Code	32H
Alarm Name	Specified address error
Description	The address which is not used by setup of ACCMODE was specified in the MVS/MCW/MCC/SKP commands.
Corrective Actions	Review the setting in the ACCMODE/MVS/MCW/MCC/SKP command.

【Support Version】

Controller	Support Version
MP3200 Series	Ver1.09 or later
MP2000 Series	Ver2.86 or later

No. 3 "Non FD" was added to the setting item of the transmission protocol of 217IF-01 module.

"Non FD" was added to the setting item of the transmission protocol of 217IF-01 module.



【Support Version】

Controller

Controller	Support Version
MP3200 Series	It is not dependent on the version.
MP2000 Series	It is not dependent on the version.

Option Module

Module	Support Version
217IF-01	Ver2.00 or later

No. 4 The variable auto-registration function of the Ladder program was supported.

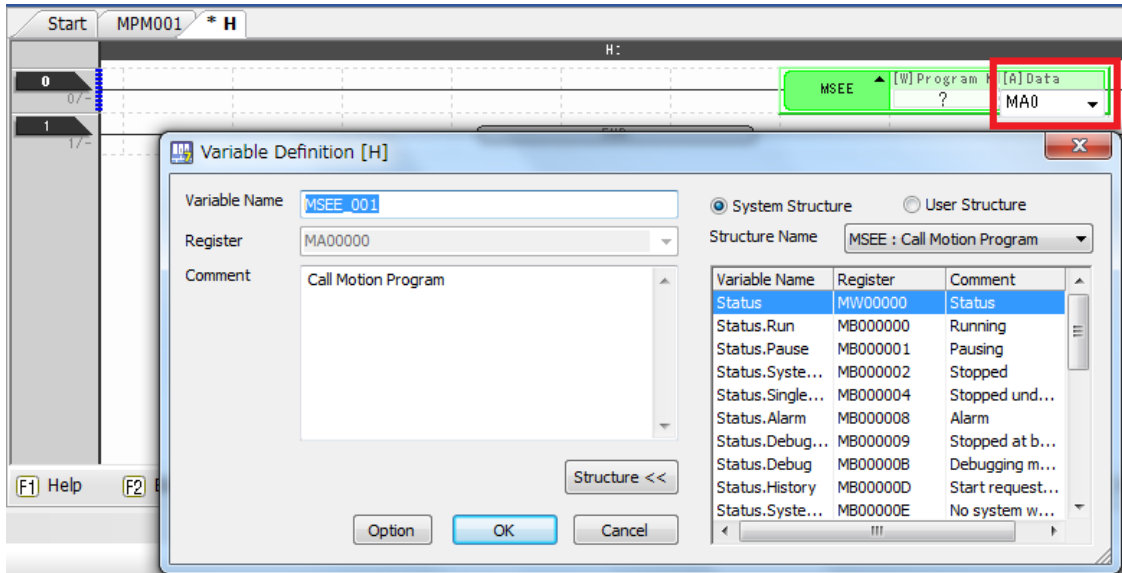
The commands (MSEE command etc.) which use the address type register of Ladder program, when an address type register was set up, the function which carries out variable registration automatically was supported.

By registering a variable into Watch function, it is possible to check the member of the address type register.

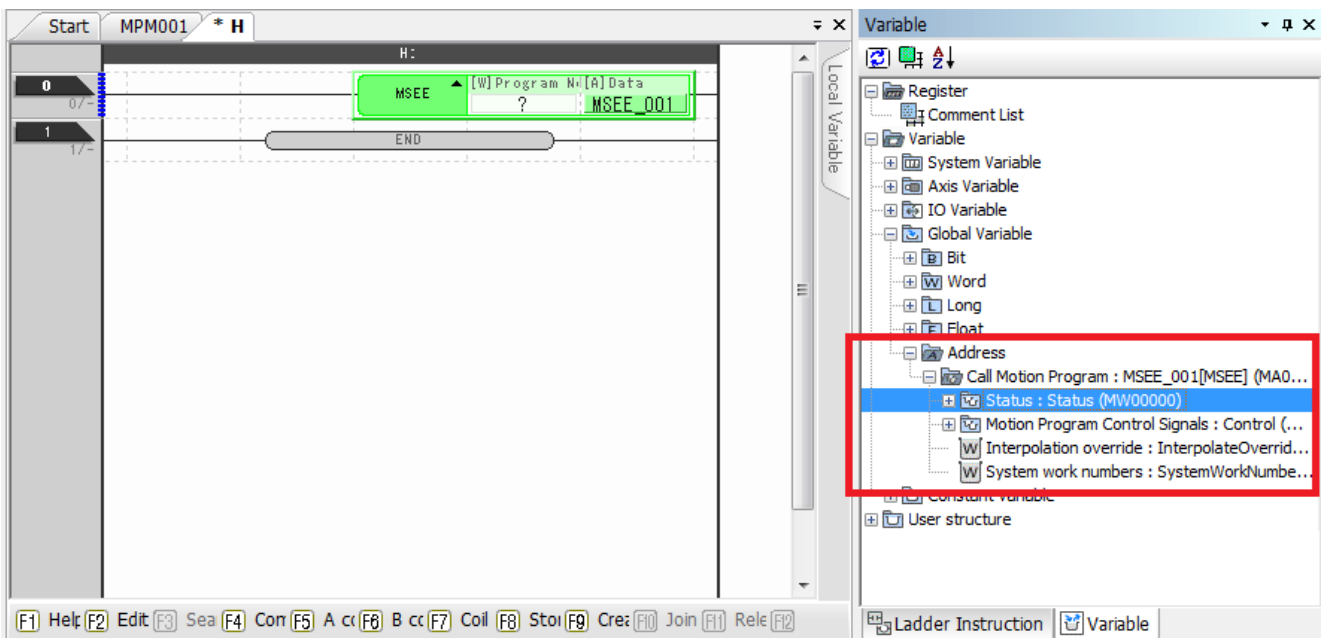
Example)

When MA0 is set to Data (address type register) of MSEE command

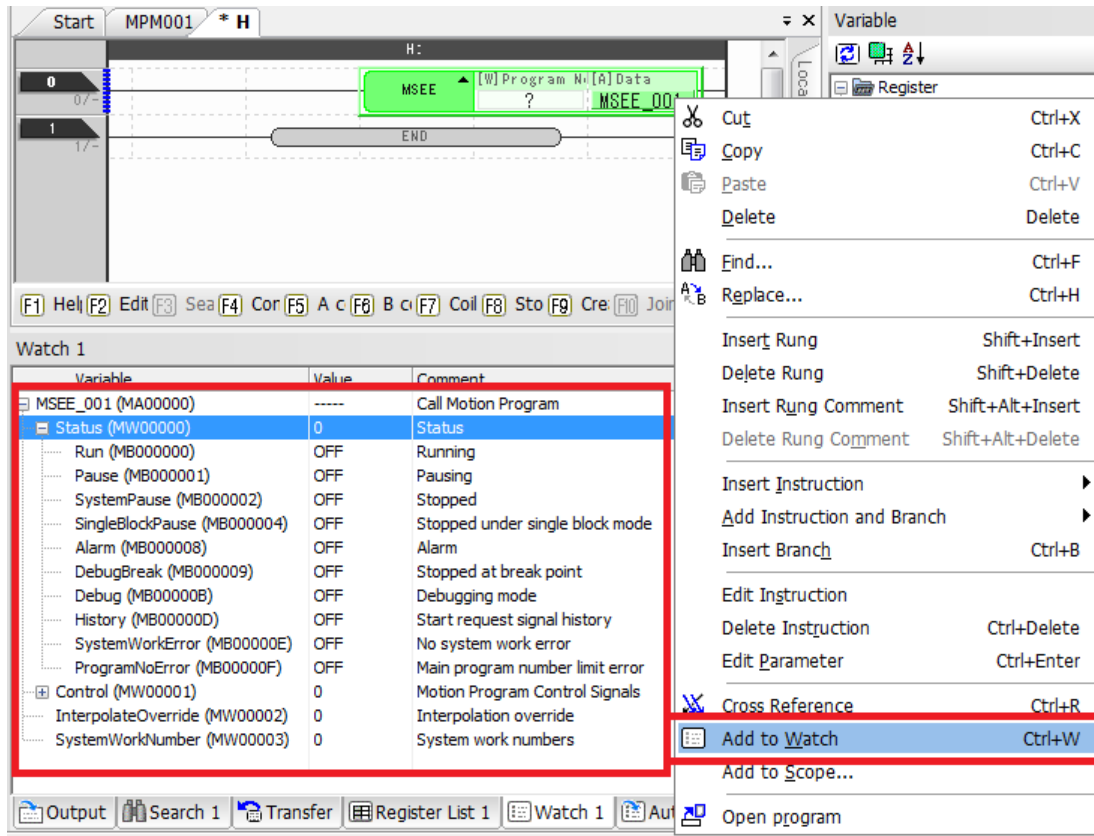
1. An input of MA0 will start a variable registration screen.



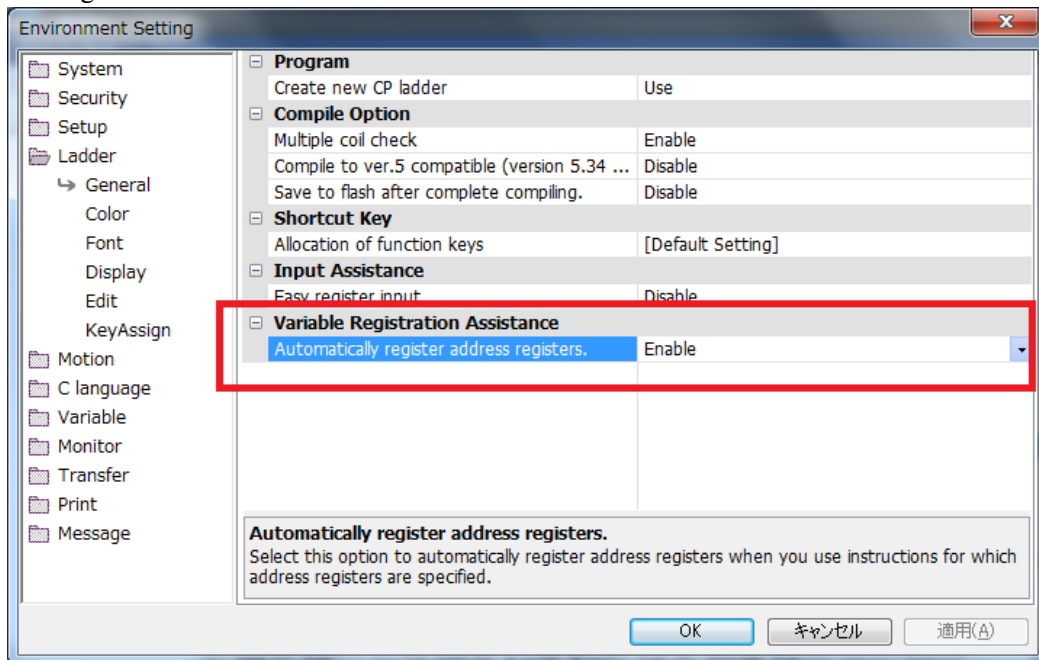
2. If the "OK" button is depressed, it will register with variable window.



3. The member of a structure can be checked by registering "MA0" into a watch.



4. It is possible to change the validity and invalidity of Variable Registration Assistance on the "Ladder" => "General" of Environment Setting screen.



【Support Version】

Controller	Support Version
MP3200 Series	It is not dependent on the version.
MP2000 Series	It is not dependent on the version.

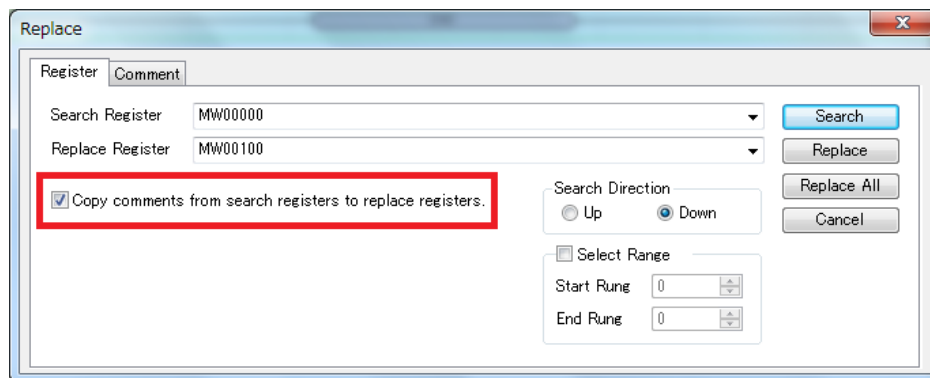
No. 5 The copy option of the register comment was supported in the replace function of Ladder editor.

The copy option of the register comment was supported in the replace function of Ladder editor.

It is possible to leave register comments to both search register and replace register by checking in the check box of "which copies a search register comment to a substitution register."

【The starting method of the replace function of Ladder editor】

1. Open Ladder program.
2. Choose "Edit" menu => "Replace."



【Support Version】

Controller	Support Version
MP3200 Series	It is not dependent on the version.
MP2000 Series	It is not dependent on the version.

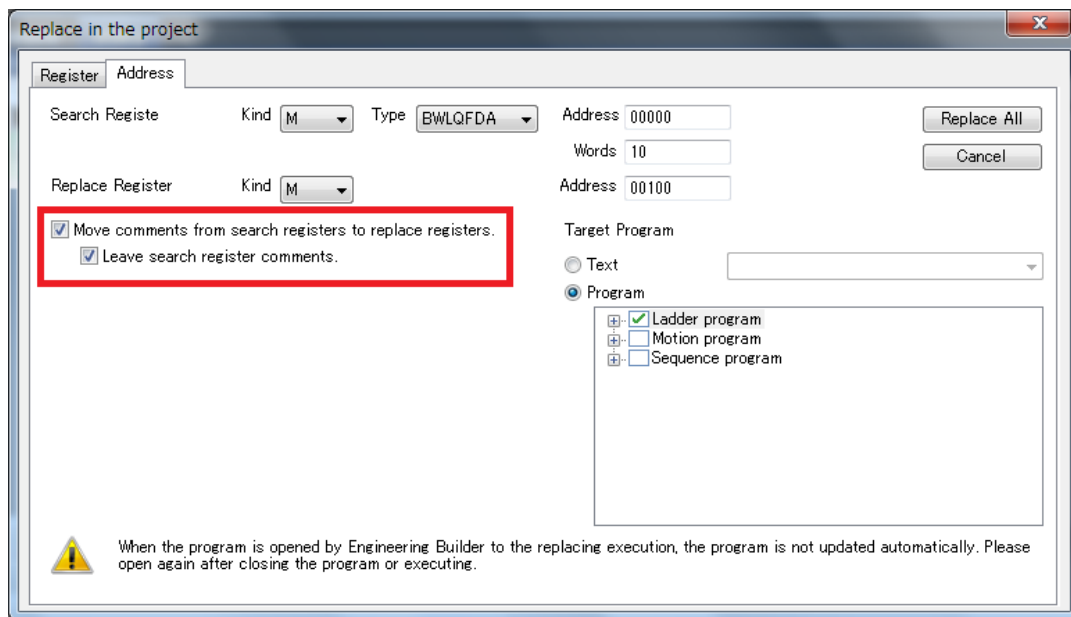
No. 6 The move option of the register comment was supported in the Replace in the Project.

The move option of the register comment was supported in the Replace in the Project.

1. It is possible to also replace register comments by checking in the check box of "moves search register comments to replace registers".
2. Moreover, it is possible to leave register comments to both search register and replace register by checking on check box of "It leaves search register comment".

【Starting method of the replace function in the project】

1. Off-line is used.
2. "Edit" menu => "Replace in the Project" is chosen.



【Support Version】

Controller	Support Version
MP3200 Series	It is not dependent on the version.
MP2000 Series	It is not dependent on the version.

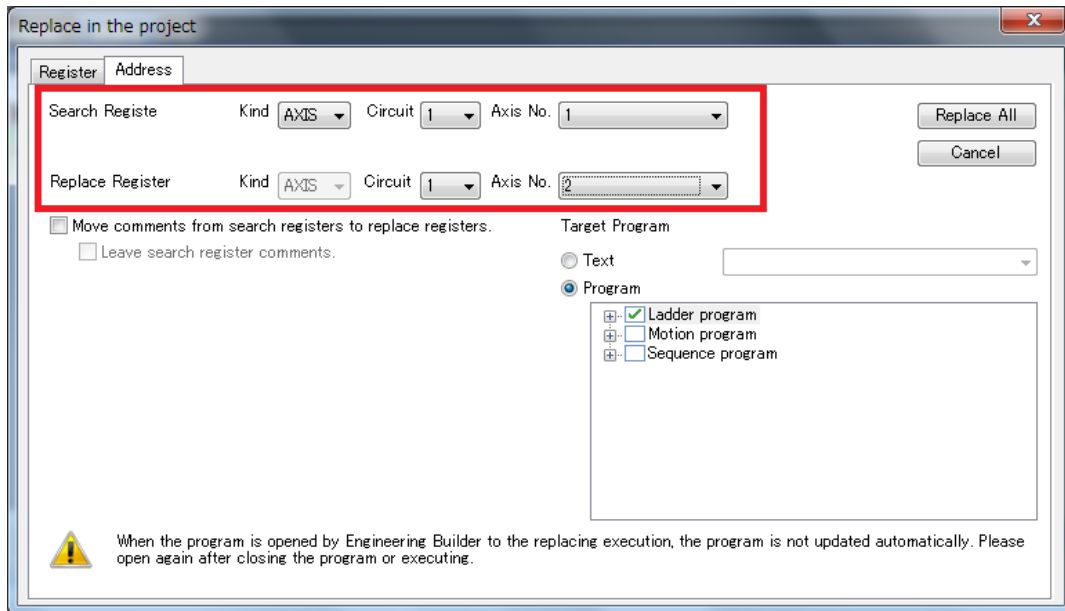
No. 7 The replace function of the motion register was supported in the Replace in the Project.

In the Replace in the Project, the replace function of the motion register (Kind: AXIS) was added.

If "AXIS" is chosen on the kind and is specified Circuit number and Axis number, it is able to perform all-replacement of motion register.

【Starting method of the replace function in the project】

1. Off-line is used.
2. "Edit" menu => "Replace in the Project" is chosen.



【Support Version】

Controller	Support Version
MP3200 Series	It is not dependent on the version.
MP2000 Series	It is not dependent on the version.

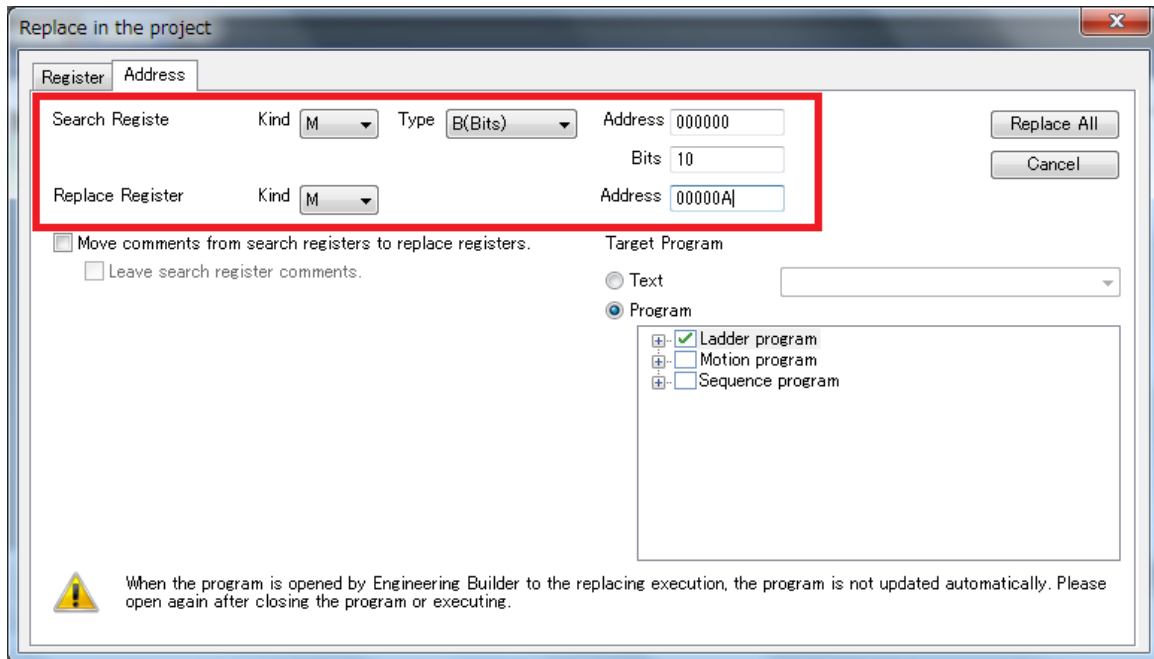
No. 8 The replace function of Bit type registers has been improved in the Replace in the Project.

In the Replace in the Project, "B (Bits)" was added to the replace of the Bit type register.

When "B (Bits)" is specified, it can replace also to the Bit type register of the same address.

【Starting method of the replace function in the project】

1. Off-line is used.
2. "Edit" menu => "Replace in the Project" is chosen.



【Support Version】

Controller	Support Version
MP3200 Series	It is not dependent on the version.
MP2000 Series	It is not dependent on the version.

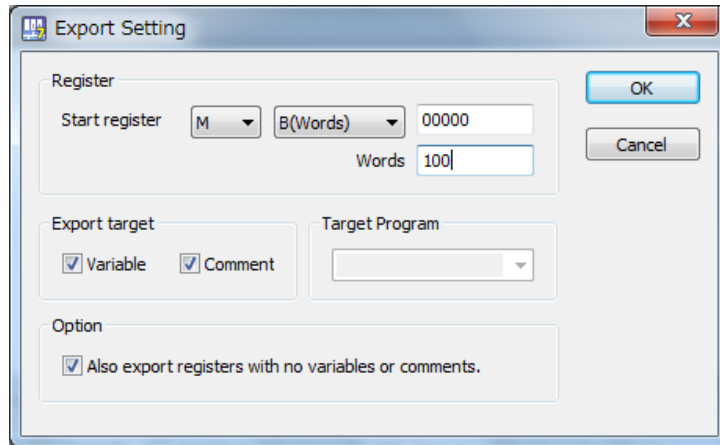
No. 9 The export function of variable and comment has been improved.

In the export function of variable and comment, the function in which the range of the register to export can be specified was supported.

Conventionally, all the registers into which the comment was registered had been exported.

【starting method of the export function of variable and comment】

1. Choose "File" menu => "Export"
2. Choose "Export variable and comment of the specified register" of "Variable and Comment" on the Export screen.



【Support Version】

Controller	Support Version
MP3200 Series	It is not dependent on the version.
MP2000 Series	It is not dependent on the version.

No. 10 Conversion operation of symbols has been improved.

When the compression file (extension: MAL) created by MPE720 Ver5 is opened by MPE720 Ver7, the project conversion from MAL file to the Ver6 compatible file (extension: YMW) carried out. And the improvement which can unify in comments the symbol of the register used by CP Ladder etc. was supported.

※It is changed in the format of the "symbol.comment."

Example)

The symbol and comment of MW00000 in a MAL file

Register No	Symbol	Comment
MW00000	Symbol1	Comment1

↓
↓
↓

The symbol and comment of MW00000 in a YMW file

Register No	Comment
MW00000	Symbol1.Comment1

【Support Version】

Controller	Support Version
MP3200 Series	It is not dependent on the version.
MP2000 Series	It is not dependent on the version.

No. 11 The compatible mode of MPE720 Ver6 of project files was added to the Environment Setting.

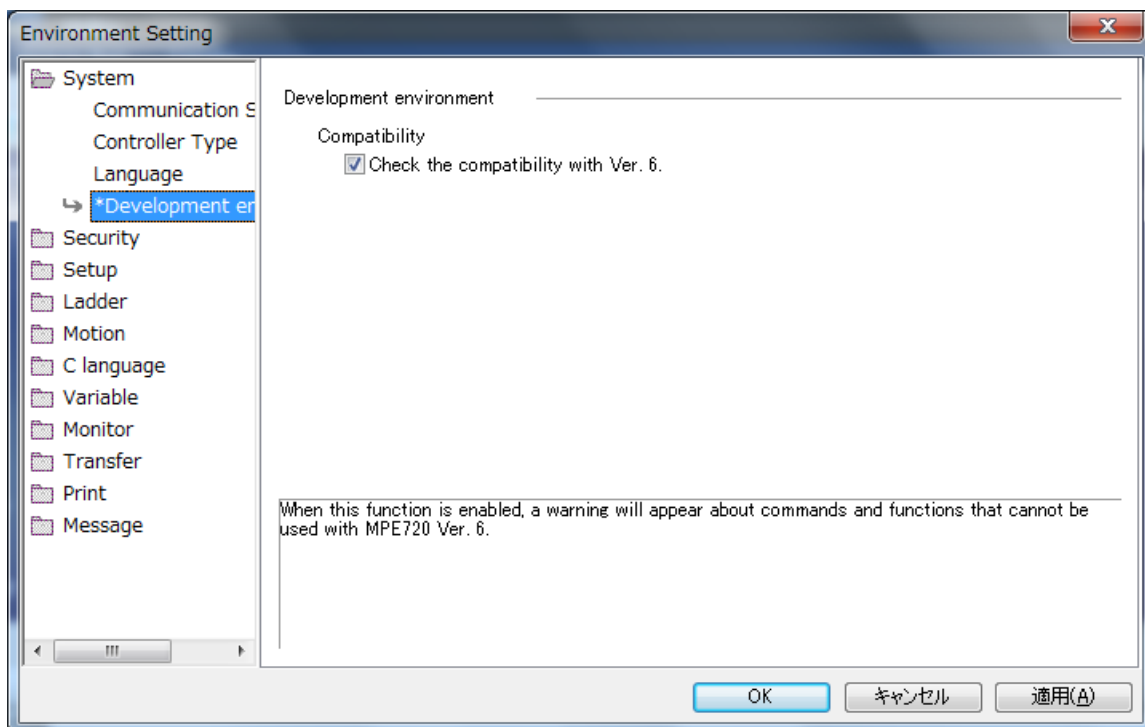
The check of "Check the compatibility with Ver.6" was added to the System => Development environment of the Environment Setting.

The following operation is added when "Check the compatibility with Ver.6" is chosen.

※The selection of "Check the compatibility with Ver.6" can choose only at the time of the Ver6 compatible project file (extension: YMW).

【Operation】

1. When the compile mode of the EXPRESSION command of the Ladder program or Motion program is changed into "Version 7.00" from "Ver.6 Compatible", display a warning message.
2. When it compiles where "Version 7.00" mode is chosen as the compile mode of the EXPRESSION command of the Ladder program, or Motion program, output "warning" to an output window.
3. When the parallel circuit supported from Ver7.20 is created and compiled in the Ladder program, output "warning" to an output window.

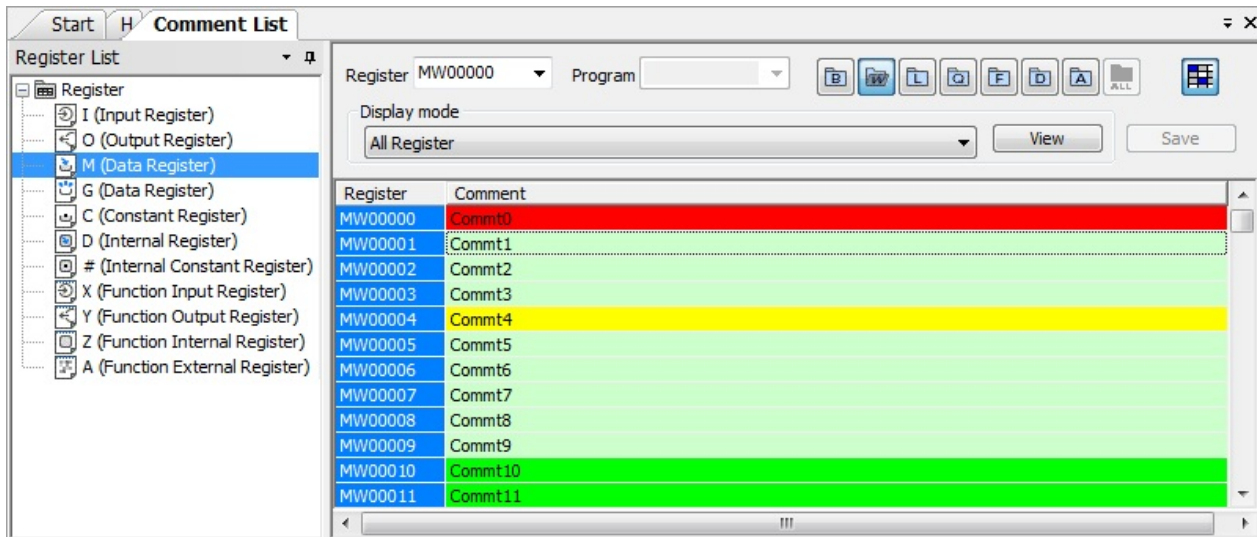


【Support Version】

Controller	Support Version
MP3200 Series	It is not dependent on the version.
MP2000 Series	It is not dependent on the version.

No. 12 The Register Map function was added to Comment List function

The function which displays Register Map (register in use) on the Comment List function by a color was added. It is possible to check the registers in use, the registers overlapped and used, and the registers in no use by using Register Map function.



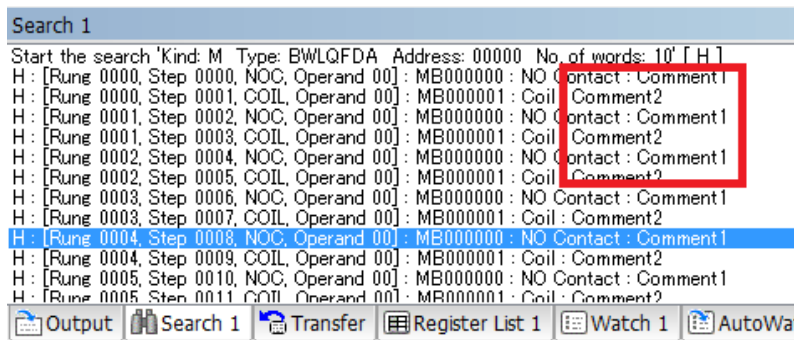
Color	Content
Yellowish green	Registers in use
Light yellowish green	The register used by the command which specifies the width of registers to be used, such as a COPYW command ※When the value is directly set up for the preset value of register width
Yellow	<ul style="list-style-type: none"> ▪ The register specified by the index register ▪ The register used by the command which specifies the width of registers to be used, such as a COPYW command ※When the register was used for the preset value of register width and the value is set up
Red	The register used by overlapping

【Support Version】

Controller	Support Version
MP3200 Series	It is not dependent on the version.
MP2000 Series	It is not dependent on the version.

No. 13 The display improvement of the output log of the Search function was carried out.

When searching, it has improved so that register comments may also be displayed on the Search window.



【Support Version】

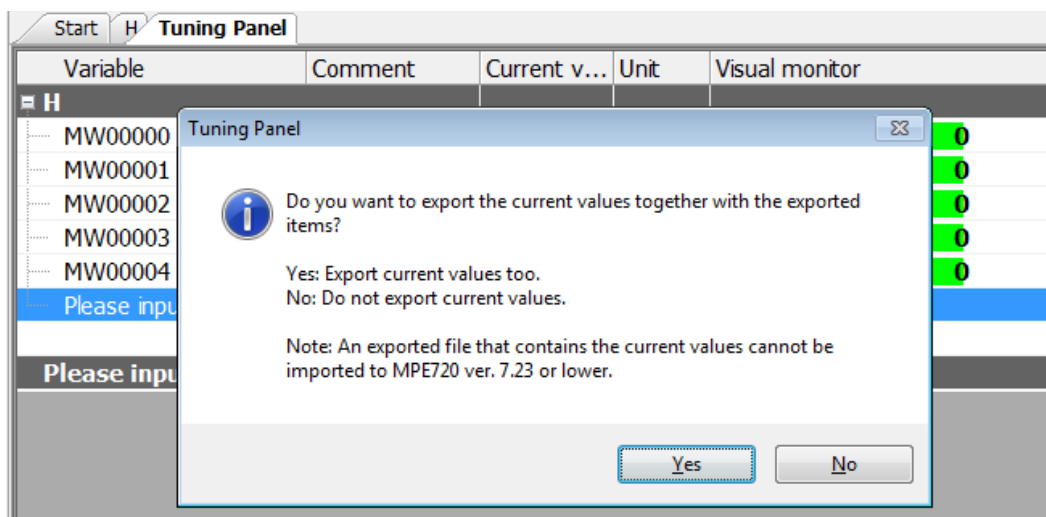
Controller	Support Version
MP3200 Series	It is not dependent on the version.
MP2000 Series	It is not dependent on the version.

No. 14 The improvement of the export and import function of the Tuning panel was executed.

It has improved so that the current value can be exported and imported to export and import function of the Tuning panel function.

※The export data including the current value cannot do import with MPE720 before MPE720 Ver.7.23.

If you want to import export data in MPE720 before MPE720 Ver.7.23, it is possible to import export data which does not contain the current value.



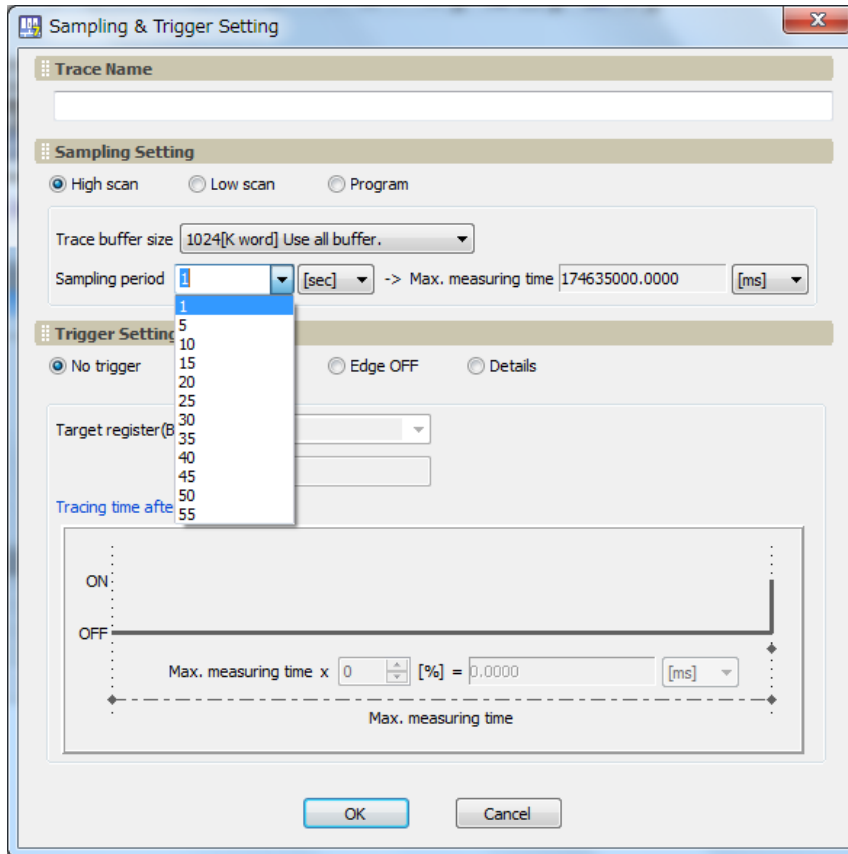
【Support Version】

Controller	Support Version
MP3200 Series	It is not dependent on the version.
MP2000 Series	It is not dependent on the version.

No. 15 The improvement of the sampling period of Real-Time Trace function was carried out.

It improved it to acquire data for the unit of [sec], [min], and [hour] at the setting that synchronized with High scan and Low scan at the sampling period of the Real-Time Trace function.

※The maximum setting is different according to the set time of High scan and Low scan and the setting of the size of the trace buffer.

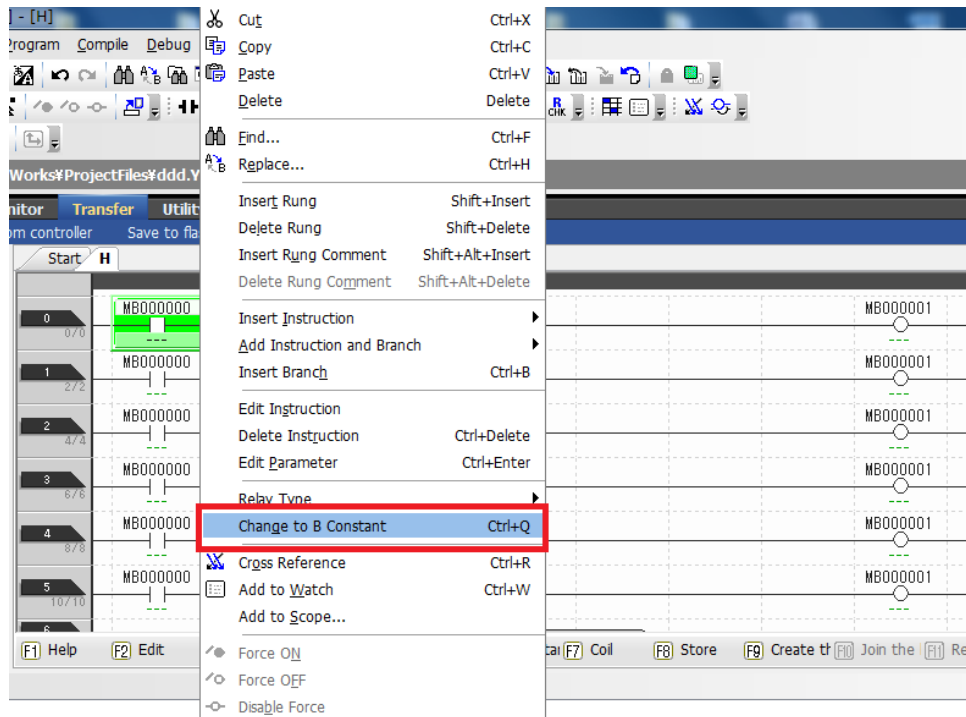


【Support Version】

Controller	Support Version
MP3200 Series	It is not dependent on the version.
MP2000 Series	It is not dependent on the version.

No. 16 The shortcut key of Ladder program was added.

The “Ctrl+Q” was allocated to the shortcut key when changing from NO Contact to NC Contact, and from NC Contact to NO Contact.



【Support Version】

Controller	Support Version
MP3200 Series	It is not dependent on the version.
MP2000 Series	It is not dependent on the version.

No. 17 The improvement of operation of the program selection check tree was carried out.

The program selection check tree of a transfer function, the search in project, the replace in project, and the "Transfer File Settings" of "Transfer" => "MPLoader" of Environment Setting screen was improved as follows.

Example)

When only the grandchild drawing existed.

(H drawing do not exist, H01 drawing do not exist, H01.01 drawing exists)

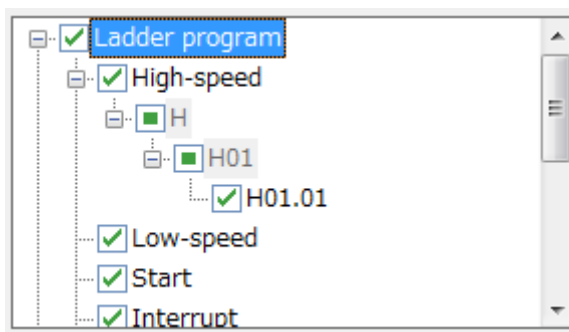
【before it improved it】

The operation was able to apply the check to H drawing and the H01 drawing program selection check tree. (The operation where H drawing and the H01 drawing seemed to exist.)

【after it improves it】

The program selection check tree, the gray is displayed to H drawing and the H01 drawing. Moreover, it is operation that cannot apply the check to H drawing and the H01 drawing.

In addition, it is movement of three state check boxes.



State	Content
<input type="checkbox"/>	With no check (The state that all programs have not been selected in the tree of the lower layer)
<input type="checkbox"/>	Intermediate state (The state that a part of program has been selected in the tree of the lower layer)
<input checked="" type="checkbox"/>	With checks (The state that all programs have been selected in the tree of the lower layer).

【Support Version】

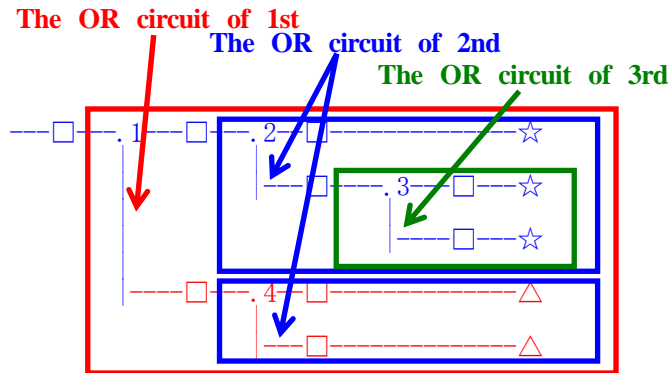
Controller	Support Version
MP3200 Series	It is not dependent on the version.
MP2000 Series	It is not dependent on the version.

No. 18 The compile operation of Ladder program has been improved.

In compile operation of Ladder program, when a circuit including the following circuit pattern (parallel circuit supported from MPE720 Ver7.20) was created, a part of circuit might not operate normally. So, this has been improved.

【Phenomenon】

When the circuit containing the following pattern was created, there was a phenomenon of operating without receiving the condition that the circuit below the OR circuit of 1st class must operate essentially in response to the conditional instruction before the OR circuit of 1st class.



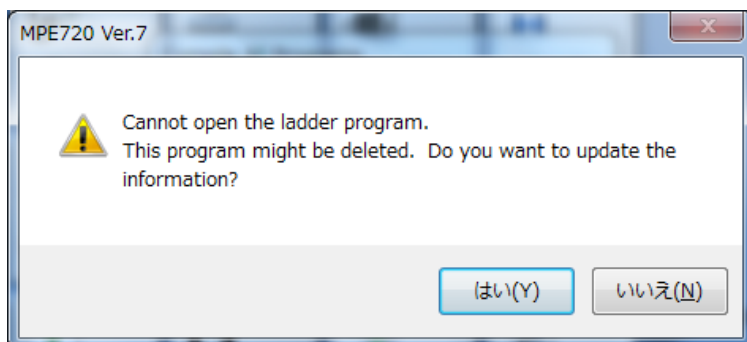
Item	Content
The OR circuit of 1st class	The OR circuit branched from the bus-bar of langue.
The OR circuit of 2nd class	The OR circuit branched out of the OR circuit of 1st class.
The OR circuit of 3rd class	The OR circuit branched out of the OR circuit of 2nd class.
□(Conditional instruction)	NO Contact, NC Contact, Coil, instruction(=, !=, >, <), power line(-----) etc.
☆(Output instruction)	Coil, Block instruction(Expression, STORE, COPYW) etc. ※However, when all ☆ is coil commands, a phenomenon does not occur.
△(Output instruction)	Coil, Block instruction(Expression, STORE, COPYW) etc.

【Support Version】

Controller	Support Version
MP3200 Series	It is not dependent on the version.
MP2000 Series	It is not dependent on the version.

No. 19 The compile operation of "Compile All Programs" has been improved.

When the compile operation of "Compile All Programs" was carried out, there was a phenomenon in which the compile result of the already deleted program was displayed on the output window, and was used as a compile error. So, this has been improved.

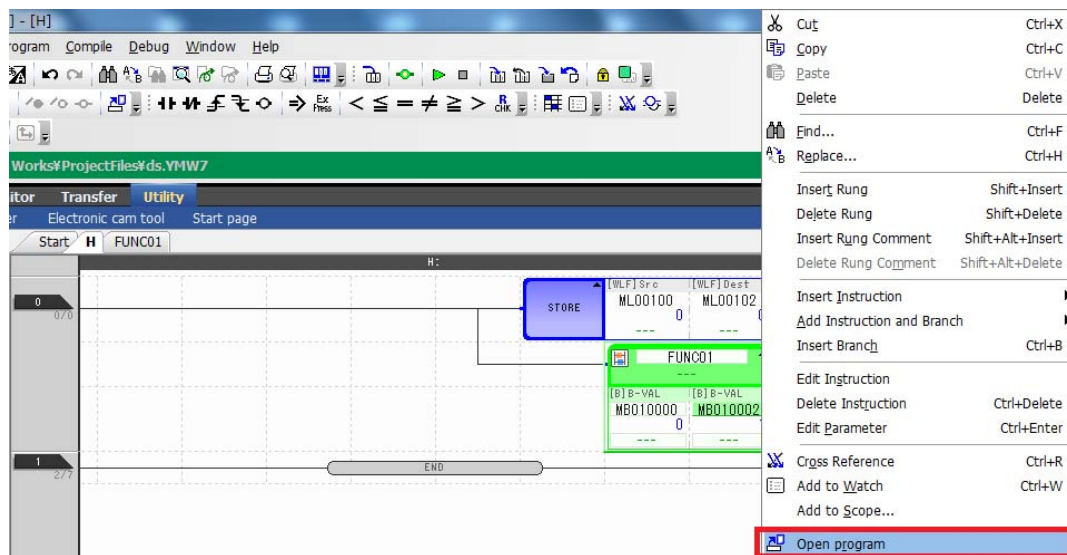


【Support Version】

Controller	Support Version
MP3200 Series	It is not dependent on the version.
MP2000 Series	It is not dependent on the version.

No. 20 The operation of "Open program" of Ladder program has been improved.

When the FUNC command was arranged below an OR circuit and "Open program" was carried out, there was a phenomenon which cannot monitor the status of the function referred to. So, this has been improved.

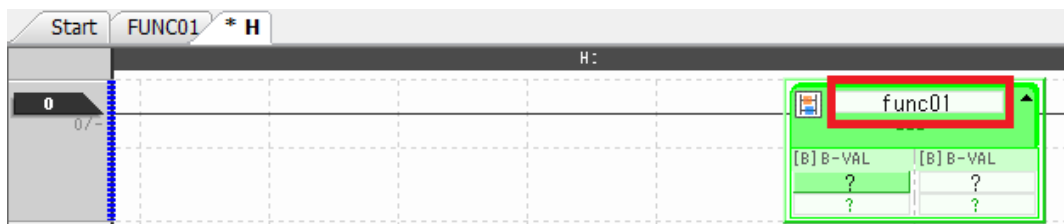


【Support Version】

Controller	Support Version
MP3200 Series	It is not dependent on the version.
MP2000 Series	It is not dependent on the version.

No. 21 The input operation of the FUNC command of Ladder program has been improved.

Where a function (FUNC01) is created, when "func func01" was inputted on a ladder editor, there was a phenomenon in which "func01" of a small letter could be set up. So, this has been improved.



【Support Version】

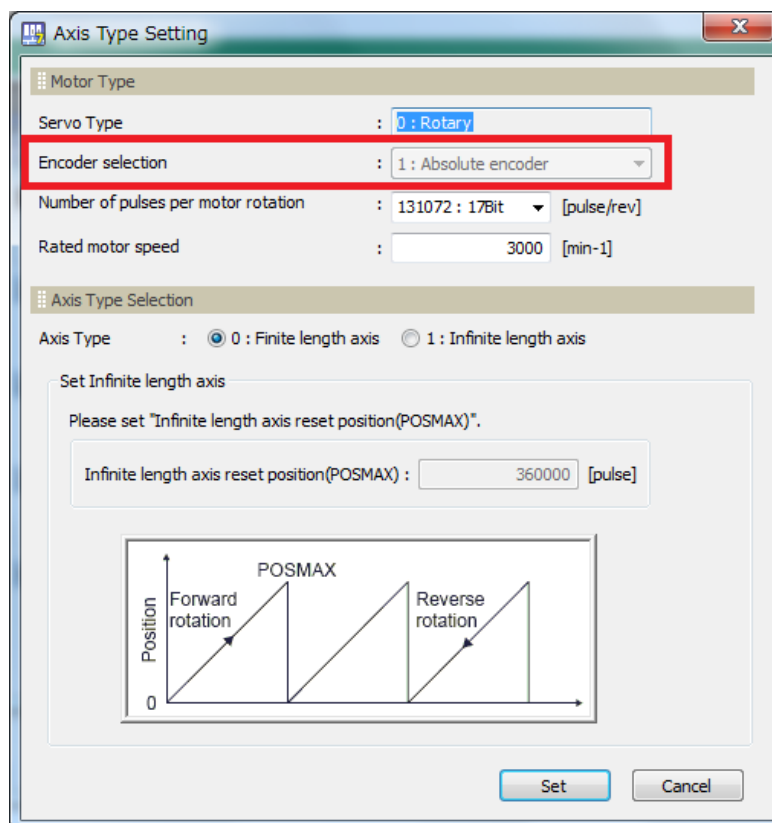
Controller	Support Version
MP3200 Series	It is not dependent on the version.
MP2000 Series	It is not dependent on the version.

No. 22 The improvement of the "Axis Type Setting" screen of the Axis Setup Wizard function was carried out.

In the Axis Setup Wizard function, when the following operation was carried out, since there was a phenomenon that a different preset value from the preset value written in the SERVOPACK is displayed on the "Encoder selection" of "Axis Type Setting" screen. So, this has been improved.

【Operation】

1. Carry out online to a controller.
2. Start the Axis Setup Wizard function and "1. SERVOPACK Parameter Setting".
3. Complete a setup of SERVOPACK parameter and write the preset value in the SERVOPACK.
4. If the "2. Axis Type Setting" of "2. Motion Parameter Setting" screen is opened, it will be a different preset value is displayed on the "Encoder selection".

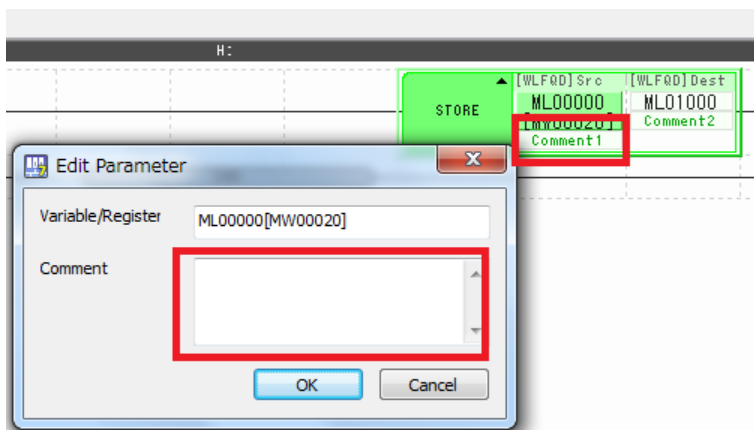


【Support Version】

Controller	Support Version
MP3200 Series	It is not dependent on the version.
MP2000 Series	It is not dependent on the version.

No. 23 The display improvement of the Edit Parameter dialog of Ladder editor was carried out.

In Ladder program, when the array registers was used for a command and the edit of the register was carried out by double click, there was a phenomenon in which the comments were not displayed on the Edit Parameter dialog. So, this has been improved.

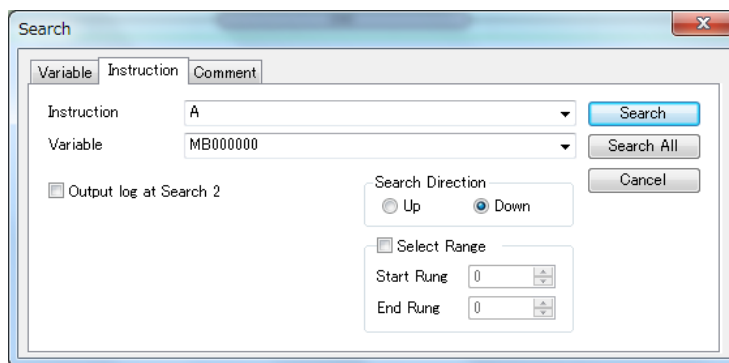


【Support Version】

Controller	Support Version
MP3200 Series	It is not dependent on the version.
MP2000 Series	It is not dependent on the version.

No. 24 The improvement of the Search of Ladder editor was carried out.

In the "Instruction" search of Ladder editor, although the command corresponding to a search condition existed when "NO Contact", "NC Contact", and "Coil" were specified on the "Instruction" and "register" was specified on the "variable", since there was a phenomenon in which it did not hit search. So, this has been improved.

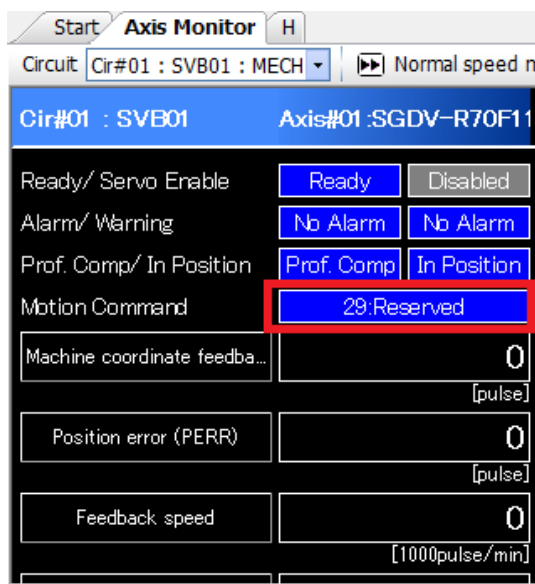


【Support Version】

Controller	Support Version
MP3200 Series	It is not dependent on the version.
MP2000 Series	It is not dependent on the version.

No. 25 The display improvement of Motion Command of Axis Monitor was carried out.

Since there was a phenomenon displayed to be "Reserved" on Motion Command of Axis Monitor, when the responses of Motion Command (IWxx08) were "29: Servo ON", "30: Servo OFF", and "31: Clear Alarm ". So, this has been improved.



【Support Version】

Controller	Support Version
MP3200 Series	It is not dependent on the version.
MP2000 Series	It is not dependent on the version.

No. 26 The improvement of saving a project file has been carried out.

When the operation of saving a project file was not completed normally, if the project file was opened again, there was a phenomenon in which the error message was displayed and the project file was not opened.



【Support Version】

Controller	Support Version
MP3200 Series	It is not dependent on the version.
MP2000 Series	It is not dependent on the version.

No. 27 The conversion operation to a Ver6 compatible project file (extension: YMW) from the compressed file (extension: MAL) of MPE720 Ver5 has been improved.

When the following conditions were fulfilled, the project file changed into the Ver6 compatible project file (extension: YMW) from the compressed file (extension: MAL) of MPE720 Ver5 was compiled, there was a phenomenon used as a compile error.

【Conditions】

1. The compressed file of MPE720 Ver5 is created in new rudder editor mode.
2. The symbol is described in the EXPRESSION command.

【Support Version】

Controller	Support Version
MP3200 Series	It is not dependent on the version.
MP2000 Series	It is not dependent on the version.

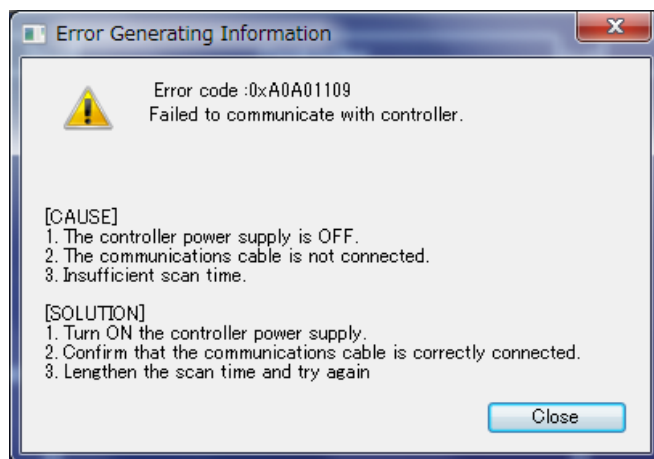
No. 28 The operation Saving of the SVB module of MC-Configurator has been improved. (PART 1)

In Module Configuration (MC-Configurator), if a setup of SVB module is saved in the following operating procedure at a project file and the project file data is written in a controller, since there was a phenomenon it is impossible to carry out online connection to a controller. So, this has been improved.

【Operating procedure】

In the case of example MP2310 controller

1. Newly create a project file and start MC-Configurator.
2. Open the detailed setting screen of built-in 218IFA module, change an IP address into 192.168.1.2 and save it.
3. Assign and save SERVOPACK (SGDV-11A) at the built-in SVB.
4. By Transfer function, write System Configuration in a controller and save to flash.
5. Carry out online connection to a controller (192.168.1.2) by power supply re-injection.



【Support Version】

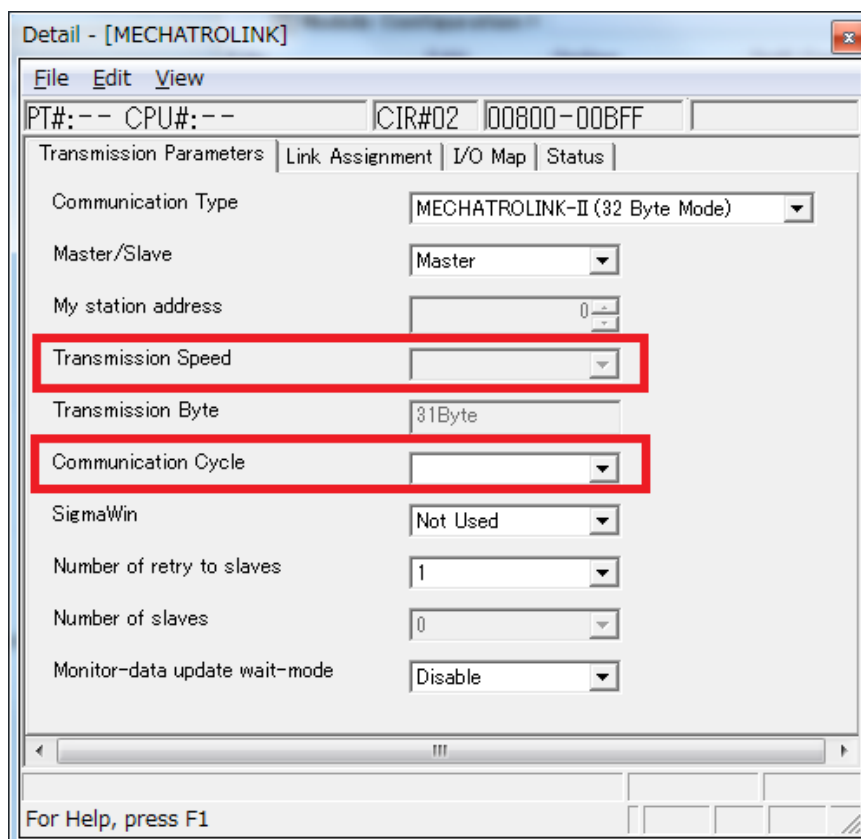
Controller	Support Version
MP3200 Series	It is not dependent on the version.
MP2000 Series	It is not dependent on the version.

No. 29 The operation Saving of the SVB module of MC-Configurator has been improved. (PART 2)

Since there was a phenomenon in which a setup of Transmission Speed and Communication Cycle served as empty, when the SVB module was set up in the following operating procedure. So, this has been improved.

【Operating procedure】

1. Newly create a project file.
2. Start Module Configuration (MC-Configurator).
3. Assign SVB module to the option module.
4. Save (project preservation).
5. Assign SERVOPACK to SVB module.
6. Where SERVOPACK is assigned (edit state), open the detailed setting screen of SVB.

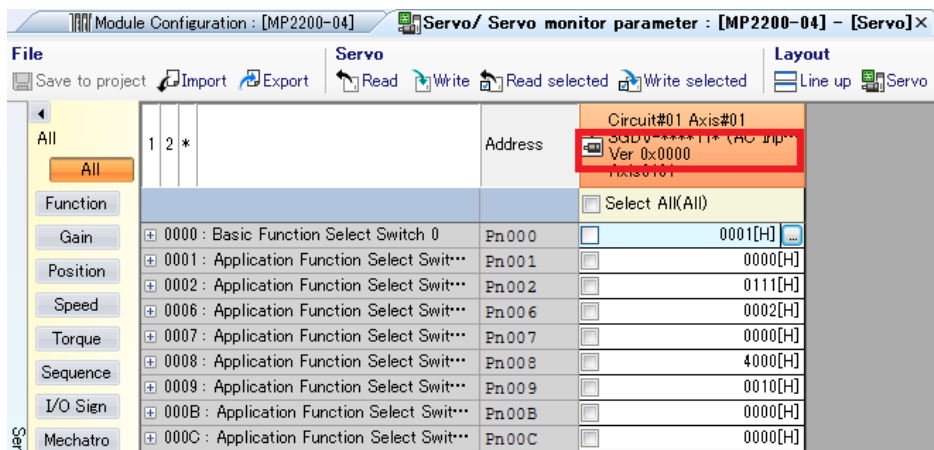


【Support Version】

Controller	Support Version
MP3200 Series	It is not dependent on the version.
MP2000 Series	It is not dependent on the version.

No. 30 The display improvement of the SERVOPACK version of Servo Parameter screen was carried out.

When online connection is carried out to a controller, when the Servo Parameter screen of the SERVOPACK assigned to the SVB module was opened, there was a phenomenon in which the version information of SERVOPACK was displayed as "0x0000."



【Support Version】

Controller	Support Version
MP3200 Series	It is not dependent on the version.
MP2000 Series	It is not dependent on the version.

No. 31 The improvement of operation at the time of communication disconnection of a communication platform was carried out.

In PC of Windows 7, when communication was impossible with a controller (a cable falls out etc), it had taken by the time it carried out communication timeout. So, this has been improved.

【Support Version】

Controller	Support Version
MP3200 Series	It is not dependent on the version.
MP2000 Series	It is not dependent on the version.