

Upgrade Information of MPE720 Version6.39 Lite

1. Added and Improved Functions

1.1 Ver.6.39 Upgrade Information

Items added and features improved from MPE720 version 6.38 Lite to version 6.39 Lite are as follows.

No.	Feature	Classification
1	It supported about MECHATROLINK-II Communications References Multi Winding Unit JUSP-MD**11* (Rotary type).	Add function
2	It supported about MECHATROLINK-II Communications References Sigma-7S (SGD7S-****10*) SERVOPACK (Linear type).	Add function
3	The servo parameter of Sigma-5-mini was added.	Improvement

(*1): When MPE720 Ver.6 before MPE720 Ver.6.31 is already installed in Windows Vista and Windows 7, it may not operate for the newest information of the servo model addition by the axial setup wizard function (the newest information added into the database) updated by after MPE720 Ver.6.33.

Please refer to the following page for operating procedures.

【About the restriction matter when using MPE720 Ver.6 in Windows Vista and Windows 7】

When MPE720 Ver.6 is used in Windows Vista and Windows 7, the following phenomena might be generated.

<Phenomena>

When MPE720 Ver.6 before MPE720 Ver.6.31 is already installed in Windows Vista and Windows 7, it may not operate for the newest information of the servo model addition by the axial setup wizard function (the newest information added into the database) updated by after MPE720 Ver.6.33.

<Measures>

Using a batch file, the following folder is deleted. (*1)

C:\Users\%UserName(*2)\AppData\Local\VirtualStore\Program Files\Common Files\YASKAWA\CimScope

<Procedure>

1.The batch file enclosed by MPE720 Ver.6 installer is copied to a desktop.

【Download Version】

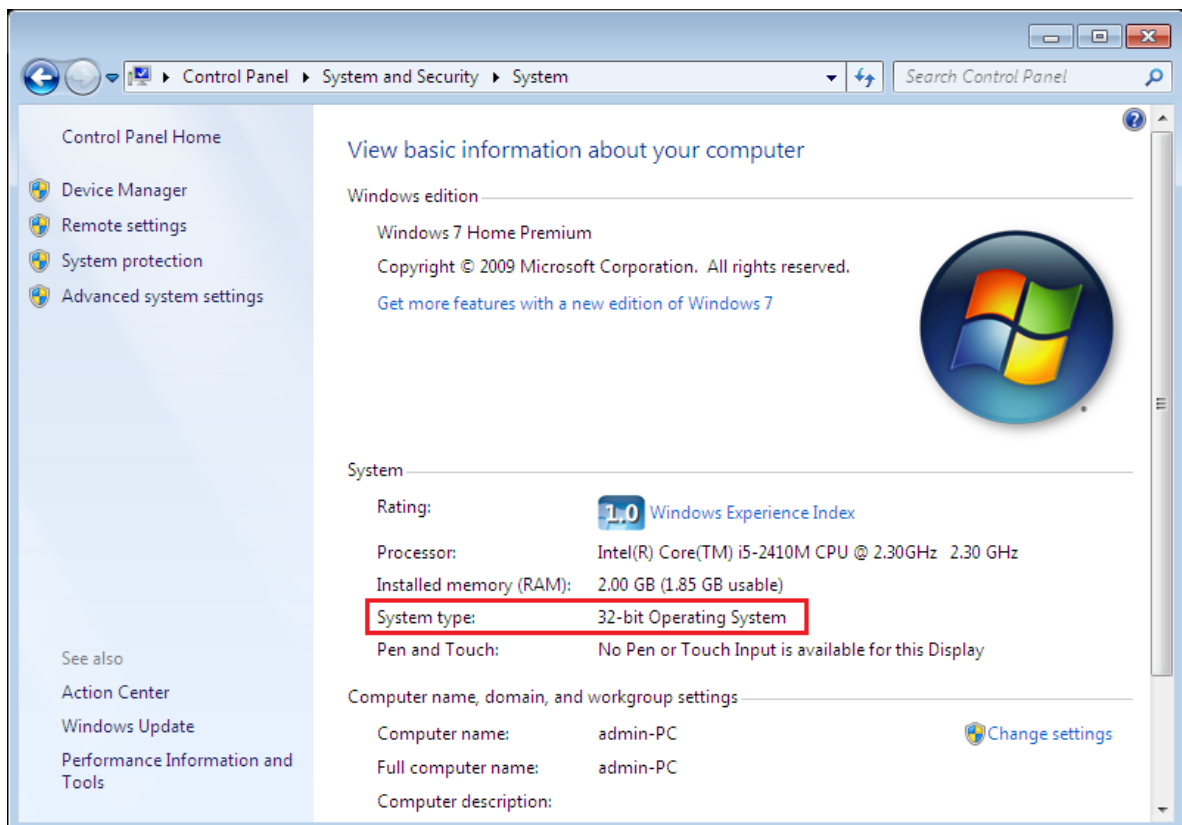
MPE720Ver6_xxx(*4)\Tools\Cleanup\32bit\MPE720Ver6_32bit.bat

【CD Media Version】

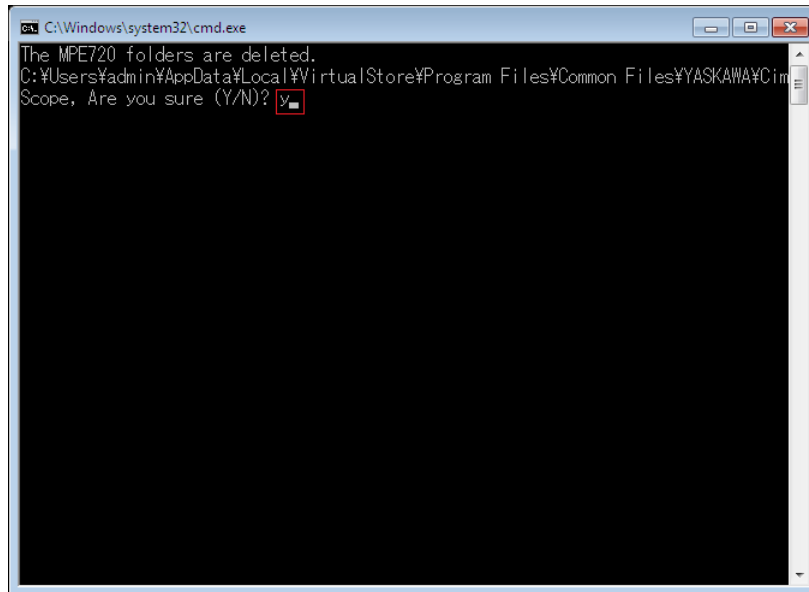
D(*5):\Tools\Cleanup\32bit\MPE720Ver6_32bit.bat

2.The copied batch file is performed.

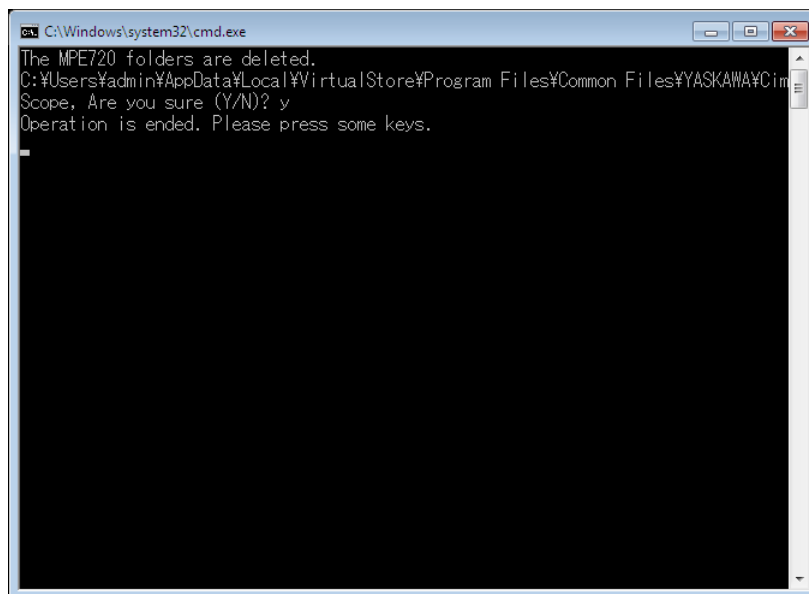
MPE720Ver6_32bit.bat



3. "y" is inputted on a command prompt and the Enter button is pushed.



4. The Enter button is pushed on a command prompt after deletion.



(*1): Since a virtual folder is copied by each user account that uses MPE720 Ver6, please carry out by each user account.

(*2): The user account name that logs in enters.

(*3): The path changes by version.

(*4): The path changes by CD/DVD drive.

(*5): When an installation folder is changed at the time of MPE720 Ver6 installation, delete a virtual folder manually by the installed path.

2. Description

No. 1 It supported about MECHATROLINK-II Communications References Multi

Winding Unit JUSP-MD**11* (Rotary type).

It supported about the following SERVOPACK.

- (1) MECHATROLINK-II Communications References Multi Winding Unit
JUSP-MD**11* (Rotary type)

1. Module Configuration

In the Module Configuration, it changed so that the SERVOPACK could be assigned.

2. Fixed, Setting, Monitor Parameter

The screen for carrying out a detailed setup of Fixed Parameters, Setting Parameters and Monitor Parameters of the SERVOPACK were added.

3. Servo Parameter, Servo Monitor

The screen for carrying out a detailed setup of Servo Parameter and Servo Monitor of the SERVOPACK were added.

The screenshot shows a software window titled 'MECHATROLINK BBCC0707 MP2310 Offline Local'. Below the title bar, there are fields for 'PT#:- CPU#:-' and 'RACK#01 Slot #'. The main area contains a tabbed interface with 'Transmission Parameters', 'Link Assignment', 'I/O Map', and 'Status'. The 'Transmission Parameters' tab is active, displaying a table with the following columns: ST#, TYPE, D, INPUT, SIZE, D, OUTPUT, SIZE, and SCAN. The first row is populated with '01', 'JUSP-MD**11*', a dropdown arrow, a small icon, and 'High' in the SCAN column. The remaining rows (02-08) are empty.

ST#	TYPE	D	INPUT	SIZE	D	OUTPUT	SIZE	SCAN
01	JUSP-MD**11*	▼						High ▼
02		▼						▼
03		▼						▼
04		▼						▼
05		▼						▼
06		▼						▼
07		▼						▼
08		▼						▼

【Support Version】

○Controller

Controller		Support Version
MP2000 Series	Built-in SVB	Ver2.94 or later

○Option Module

Module	Support Version
SVB-01	Ver1.35 or later

No. 2 It supported about MECHATROLINK-II Communications References Sigma-7S

(SGD7S-****10*) SERVOPACK (Linear type).

1. Module Configuration

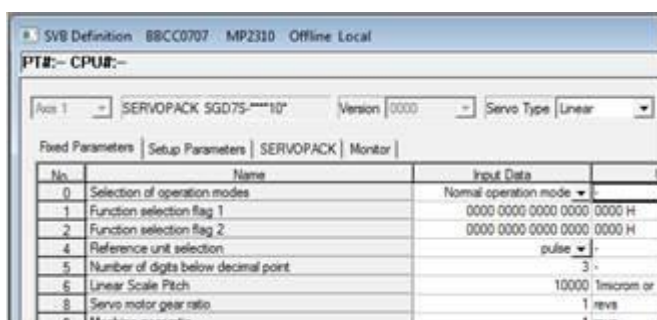
In the Module Configuration, it changed so that the SERVOPACK of the Sigma-7S (SGD7S-****10*) Linear type could be assigned.

2. Fixed, Setting, Monitor Parameter

The screen for carrying out a detailed setup of Fixed Parameters, Setting Parameters and Monitor Parameters of the SERVOPACK were added.

3. Servo Parameter, Servo Monitor

The screen for carrying out a detailed setup of Servo Parameter and Servo Monitor of the SERVOPACK were added.



【Support Version】

○Controller

Controller		Support Version
MP2000 Series	Built-in SVB	Ver2.92 or later

○Option Module

Module	Support Version
SVB-01	Ver1.34 or later

No. 3 The servo parameter of Sigma-5-mini was added.

The following parameters were added.

○SGDV-***E11*

No.	Parameter Name	Firmware Version
Pn204	Reserved parameter (Do not change)	Ver0028 or later
Pn884	Communications Control 2	Ver0029 or later

○SGDV-***E21*

No.	Parameter Name	Firmware Version
Pn204	Reserved parameter (Do not change)	Ver0028 or later
Pn868	SVCMD_IO Output Signal Monitor Allocations 1	Ver0028 or later
Pn869	SVCMD_IO Output Signal Monitor Allocations 2	Ver0028 or later
Pn884	Communications Control 2	Ver0029 or later

【Support Version】

○Controller

Controller	Support Version
MP3000 Series	It is not dependent on the version.
MP2000 Series	It is not dependent on the version.