

Upgrade Information of MPE720 Version6.36 Lite

1. Added and Improved Functions

1.1 Ver.6.36 Upgrade Information

Items added and features improved from MPE720 version 6.35 Lite to version 6.36 Lite are as follows.

No.	Feature	Classification
1	The mode 4 of the ACCMODE instruction is supported	Improvement

(*1): When MPE720 Ver.6 before MPE720 Ver.6.31 is already installed in Windows Vista and Windows 7, it may not operate for the newest information of the servo model addition by the axial setup wizard function (the newest information added into the database) updated by after MPE720 Ver.3.33.

Please refer to the following page for operating procedures.

【About the restriction matter when using MPE720 Ver.6 in Windows Vista and Windows 7】

When MPE720 Ver.6 is used in Windows Vista and Windows 7, the following phenomena might be generated.

<Phenomena>

When MPE720 Ver.6 before MPE720 Ver.6.31 is already installed in Windows Vista and Windows 7, it may not operate for the newest information of the servo model addition by the axial setup wizard function (the newest information added into the database) updated by after MPE720 Ver.6.33.

<Measures>

Using a batch file, the following folder is deleted. (*1)

C:\Users\%UserName%\AppData\Local\VirtualStore\Program Files\Common Files\YASKAWA\CimScope

<Procedure>

1.The batch file enclosed by MPE720 Ver.6 installer is copied to a desktop.

【Download Version】

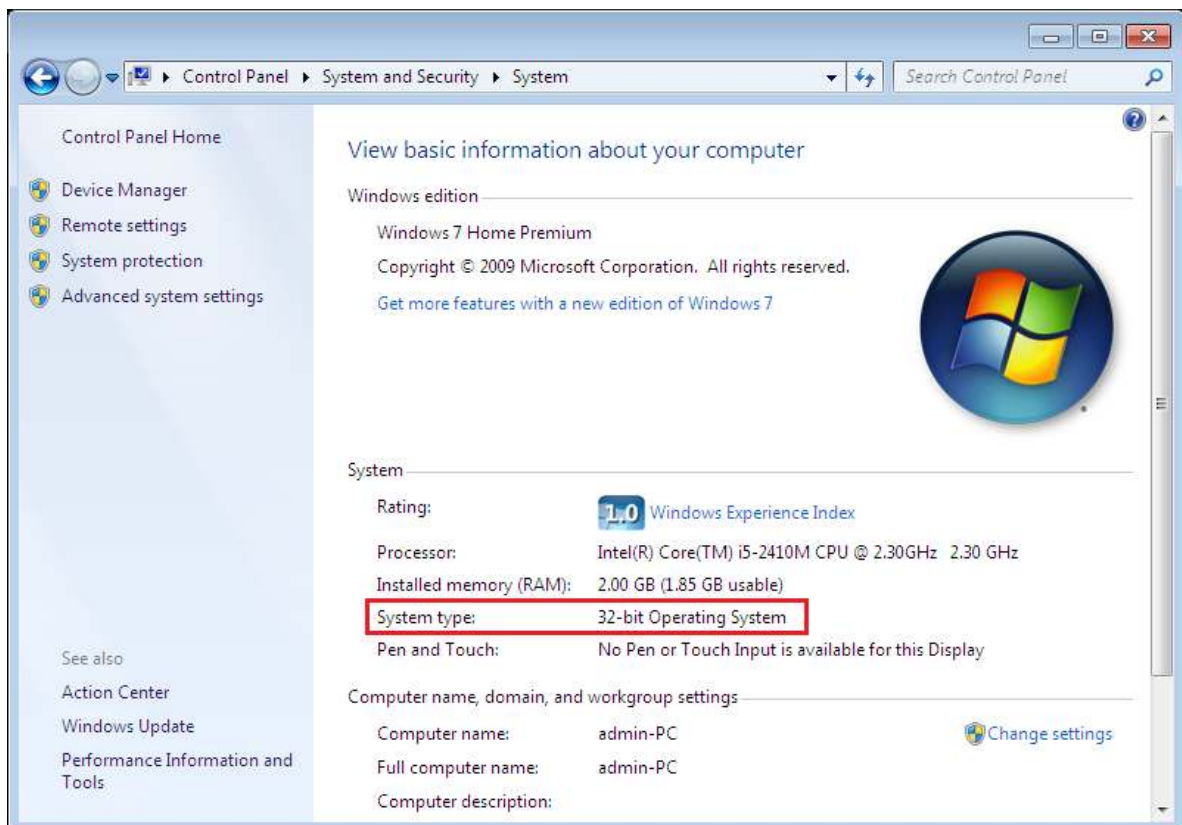
MPE720Ver6_xxx(*4)\Tools\Cleanup\32bit\MPE720Ver6_32bit.bat

【CD Media Version】

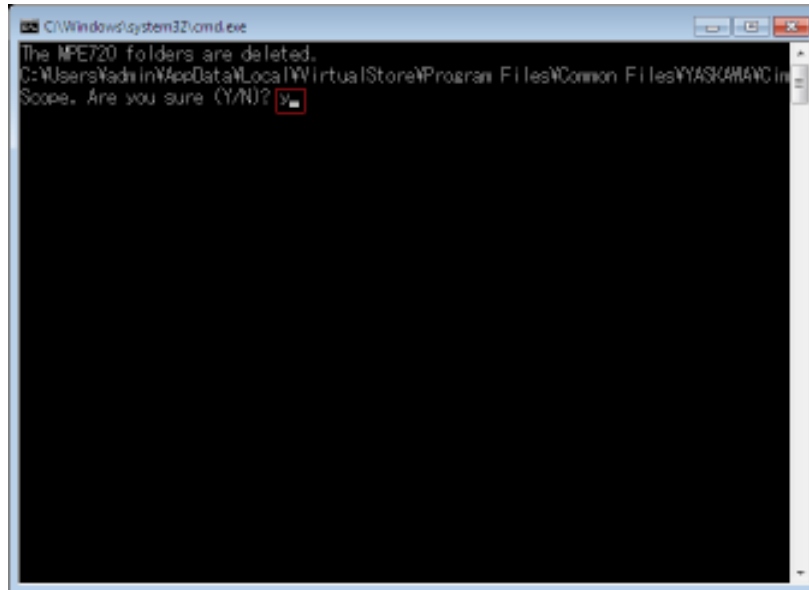
D>(*5)\Tools\Cleanup\32bit\MPE720Ver6_32bit.bat

2.The copied batch file is performed.

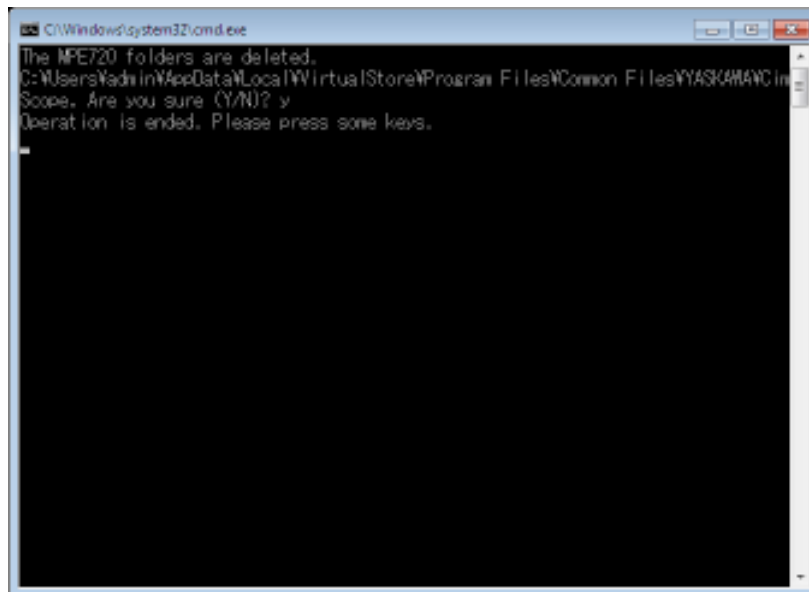
MPE720Ver6_32bit.bat



3. "y" is inputted on a command prompt and the Enter button is pushed.



4. The Enter button is pushed on a command prompt after deletion.



(*1): Since a virtual folder is copied by each user account that uses MPE720 Ver6, please carry out by each user account.

(*2): The user account name that logs in enters.

(*3): The path changes by version.

(*4): The path changes by CD/DVD drive.

(*5): When an installation folder is changed at the time of MPE720 Ver6 installation, delete a virtual folder manually by the installed path.

2. Description

No.1 The mode 4 of the ACCMODE instruction is supported

It supported the mode 4 of the ACCMODE instruction which is speed specification of the next block can be performed in motion program.

Moreover, the following Motion Alarms were added.

1. Range check of ACCMODE instruction

Alarm name :

Address M out of range

Cause of alarm :

Designation exceeded the valid range in the ACCMODE command.

2. Invalid address specification check of ACCMODE

Alarm name :

Specified register error

Cause of alarm :

The address which is not used by setup of ACCMODE was specified in the MVS/MCW/MCC/SKP commands.

【 Support Version 】

device	Support Version
MP2000 Series	Ver2.86 or later