

## **Upgrade Information of MPE720 Version6.39**

### **1. Added and Improved Functions**

#### **1.1 Ver.6.39 Upgrade Information**

Items added and features improved from MPE720 version 6.38 to version 6.39 are as follows.

No.	Feature	Classification
1	It supported about MECHATROLINK-III Communications References Wild Card Stepping Motor Drive.	Add function
2	It supported about MECHATROLINK-II Communications References Multi Winding Unit JUSP-MD**11* (Rotary type).	Add function
3	It supported about MECHATROLINK-II Communications References Sigma-7S (SGD7S-****10*) SERVOPACK (Linear type).	Add function
4	The servo parameter of Sigma-5-mini was added.	Improvement
5	Communication manager was corrected not to freeze by a gateway connection.	Improvement
6	The functional improvements of MPE720 Ver7.34 were adapted to MPE720 Ver6.39.	Improvement

(\*1): When MPE720 Ver.6 before MPE720 Ver.6.31 is already installed in Windows Vista and Windows 7, it may not operate for the newest information of the servo model addition by the axial setup wizard function (the newest information added into the database) updated by after MPE720 Ver.6.33.

Please refer to the following page for operating procedures.

## 【About the restriction matter when using MPE720 Ver.6 in Windows Vista and Windows 7】

When MPE720 Ver.6 is used in Windows Vista and Windows 7, the following phenomena might be generated.

### <Phenomena>

When MPE720 Ver.6 before MPE720 Ver.6.31 is already installed in Windows Vista and Windows 7, it may not operate for the newest information of the servo model addition by the axial setup wizard function (the newest information added into the database) updated by after MPE720 Ver.6.33.

### <Measures>

Using a batch file, the following folder is deleted. (\*1)

C:\Users\¥UserName(\*2)\AppData\Local\VirtualStore\Program Files\Common Files\YASKAWA\CimScope

### <Procedure>

1.The batch file enclosed by MPE720 Ver.6 installer is copied to a desktop.

#### 【Download Version】

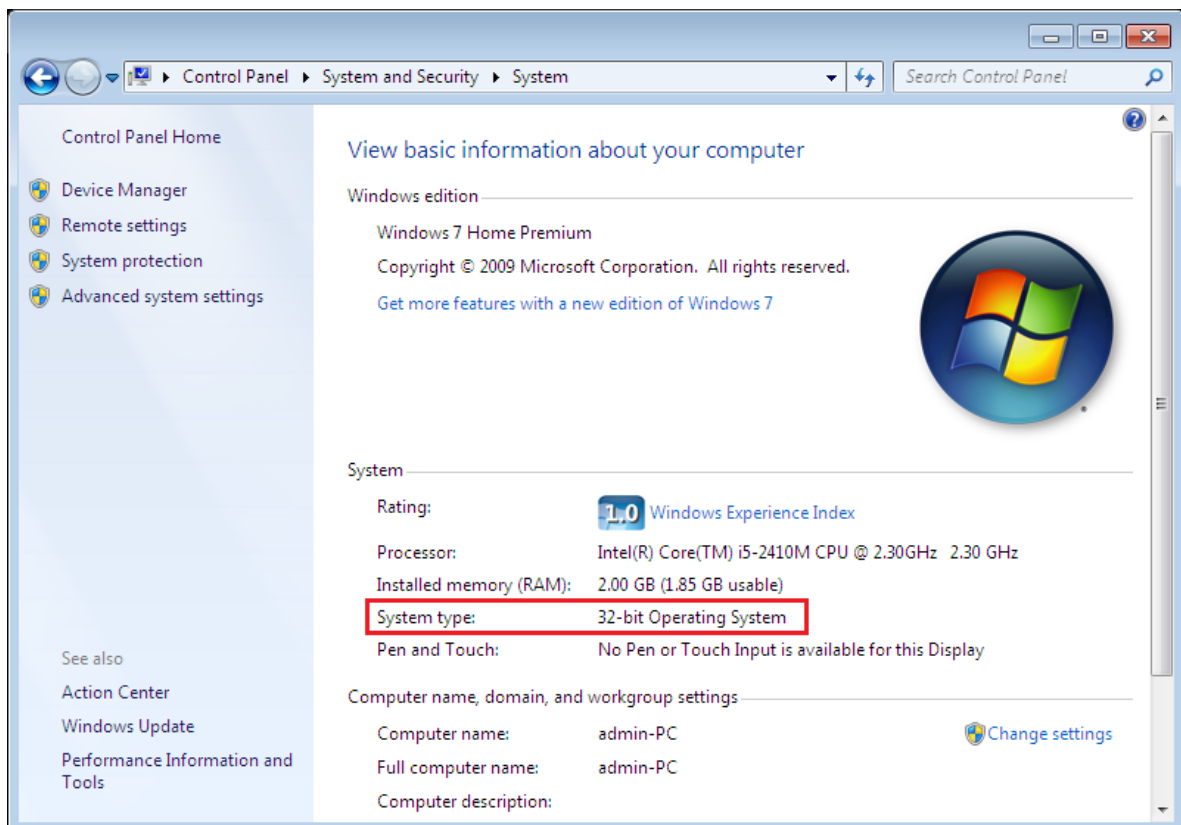
MPE720Ver6\_xxx(\*4)\Tools\Cleanup\32bit\MPE720Ver6\_32bit.bat

#### 【CD Media Version】

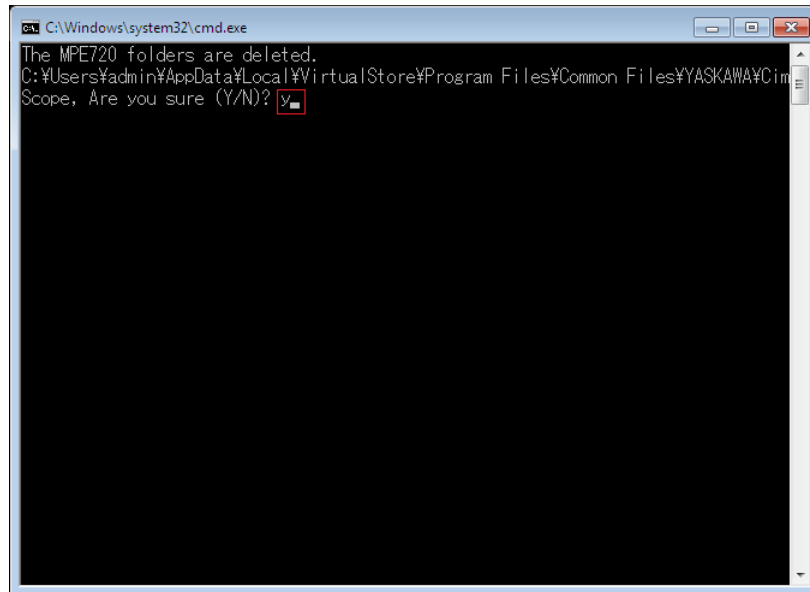
D(\*5):\Tools\Cleanup\32bit\MPE720Ver6\_32bit.bat

2.The copied batch file is performed.

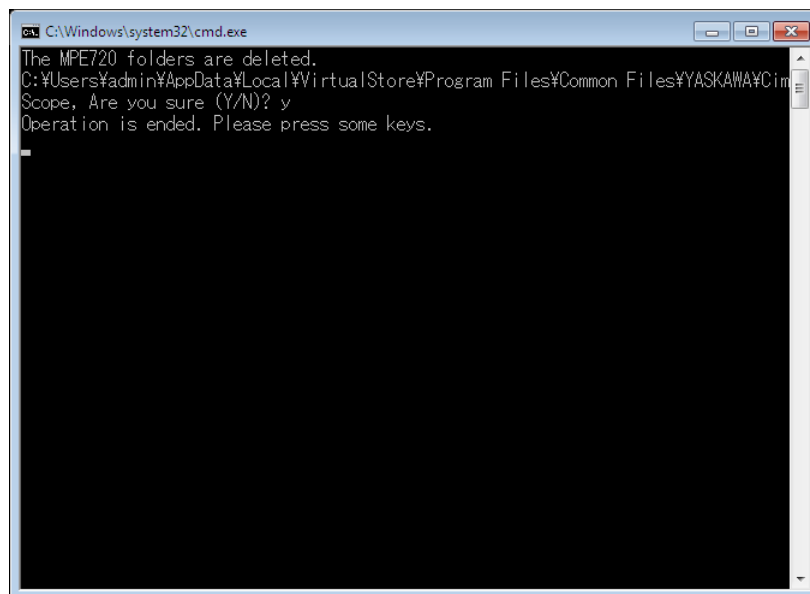
MPE720Ver6\_32bit.bat



3. "y" is inputted on a command prompt and the Enter button is pushed.



4. The Enter button is pushed on a command prompt after deletion.



(\*1): Since a virtual folder is copied by each user account that uses MPE720 Ver6, please carry out by each user account.

(\*2): The user account name that logs in enters.

(\*3): The path changes by version.

(\*4): The path changes by CD/DVD drive.

(\*5): When an installation folder is changed at the time of MPE720 Ver6 installation, delete a virtual folder manually by the installed path.

## 1.2 Past Upgrade Information

No.	Upgrade information	Remarks
1	<a href="#">MPE720 Version .6.02 upgrade information</a>	Version 6.01->Version .6.02
2	<a href="#">MPE720 Version .6.03 upgrade information</a>	Version 6.02->Version .6.03
3	<a href="#">MPE720 Version .6.04 upgrade information</a>	Version 6.03->Version .6.04
4	<a href="#">MPE720 Version .6.05 upgrade information</a>	Version 6.04->Version .6.05
5	<a href="#">MPE720 Version .6.06/ Version .6.07 upgrade information</a>	Version 6.05->Version .6.06 Version 6.06->Version .6.07
6	<a href="#">MPE720 Version .6.08 upgrade information</a>	Version 6.07->Version .6.08
7	<a href="#">MPE720 Version .6.10 upgrade information</a>	Version 6.08->Version .6.10
8	<a href="#">MPE720 Version .6.20 upgrade information</a>	Version 6.10->Version .6.20
9	<a href="#">MPE720 Version .6.21 upgrade information</a>	Version 6.20->Version .6.21
10	<a href="#">MPE720 Version .6.22 upgrade information</a>	Version 6.21->Version .6.22
11	<a href="#">MPE720 Version .6.23 upgrade information</a>	Version 6.22->Version .6.23
12	<a href="#">MPE720 Version .6.24 upgrade information</a>	Version 6.23->Version .6.24
13	<a href="#">MPE720 Version .6.25 upgrade information</a>	Version 6.24->Version .6.25
14	<a href="#">MPE720 Version .6.26 upgrade information</a>	Version 6.25->Version .6.26
15	<a href="#">MPE720 Version .6.30 upgrade information</a>	Version 6.26->Version .6.30
16	<a href="#">MPE720 Version .6.31 upgrade information</a>	Version 6.30->Version .6.31
17	<a href="#">MPE720 Version .6.33 upgrade information</a>	Version 6.31->Version .6.33
18	<a href="#">MPE720 Version .6.34 upgrade information</a>	Version 6.33->Version .6.34
19	<a href="#">MPE720 Version .6.35 upgrade information</a>	Version 6.34->Version .6.35
20	<a href="#">MPE720 Version .6.36 upgrade information</a>	Version 6.35->Version .6.36
21	<a href="#">MPE720 Version .6.37 upgrade information</a>	Version 6.36->Version .6.37
22	<a href="#">MPE720 Version .6.38 upgrade information</a>	Version 6.37->Version .6.38

## 2. Description

### No. 1 It supported about MECHATROLINK-III Communications References Wild Card Stepping Motor Drive.

It supported about the following the Stepping Motor Drive.

- (1) MECHATROLINK-III Communications References Wild Card Stepping Motor Drive  
Wild Card SteppingMotorDRV (Rotary type)

#### 1. Module Configuration

In the Module Configuration, it changed so that the Stepping Motor Drive could be assigned.

#### 2. Fixed, Setting, Monitor Parameter

The screen for carrying out a detailed setup of Fixed Parameters, Setting Parameters and Monitor Parameters of the Stepping Motor Drive were added.

#### 3. Stepping Motor Parameter

The screen for carrying out a detailed setup of Stepping Motor Parameter of the Stepping Motor Drive were added.

The screenshot shows a software window titled 'MECHATROLINK BCC0707 MP2310 Offline Local'. Below the title bar, there are fields for 'PT#:- CPU#:-', 'RACK#01', 'Slot #01', 'CIR#03', and '0C0'. A menu bar includes 'Transmission Parameters', 'Link Assignment', 'I/O Map', and 'Status'. A 'Display Expansionist Address' button is present. The main area contains a table with columns: ST#, ADR, VENDOR, DEVICE, PROFILE, BYTE, D, INPUT, SIZE, D, OUTPUT, SIZE, and SCAN. Row 01 is populated with '03h', 'Vendor', 'Wild Card Device', 'Standard SteppingMc', '48', and 'High'. Rows 02 through 08 are empty.

ST#	ADR	VENDOR	DEVICE	PROFILE	BYTE	D	INPUT	SIZE	D	OUTPUT	SIZE	SCAN
01	03h	Vendor	Wild Card Device	Standard SteppingMc	48							High
02												
03												
04												
05												
06												
07												
08												

#### 【Support Version】

##### ○ Controller

Controller		Support Version
MP2000 Series	Buile-in SVC	Ver2.94 or later

##### ○ Option Module

Module	Support Version
SVC-01	Ver1.15 or later

## No. 2 It supported about MECHATROLINK-II Communications References Multi

### Winding Unit JUSP-MD\*\*11\* (Rotary type).

It supported about the following SERVOPACK.

- (1) MECHATROLINK-II Communications References Multi Winding Unit  
JUSP-MD\*\*11\* (Rotary type)

#### 1. Module Configuration

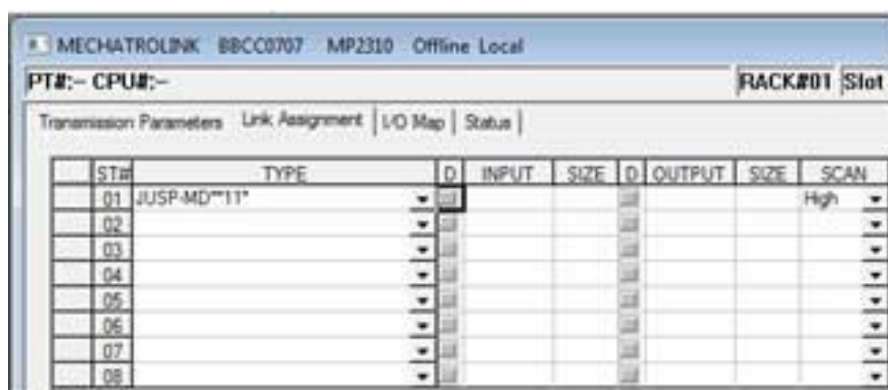
In the Module Configuration, it changed so that the SERVOPACK could be assigned.

#### 2. Fixed, Setting, Monitor Parameter

The screen for carrying out a detailed setup of Fixed Parameters, Setting Parameters and Monitor Parameters of the SERVOPACK were added.

#### 3. Servo Parameter, Servo Monitor

The screen for carrying out a detailed setup of Servo Parameter and Servo Monitor of the SERVOPACK were added.



#### 【Support Version】

##### ○Controller

Controller		Support Version
MP2000 Series	Built-in SVB	Ver2.94 or later

##### ○Option Module

Module	Support Version
SVB-01	Ver1.35 or later

### No. 3 It supported about MECHATROLINK-II Communications References Sigma-7S

#### (SGD7S-\*\*\*\*10\*) SERVOPACK (Linear type).

##### 1. Module Configuration

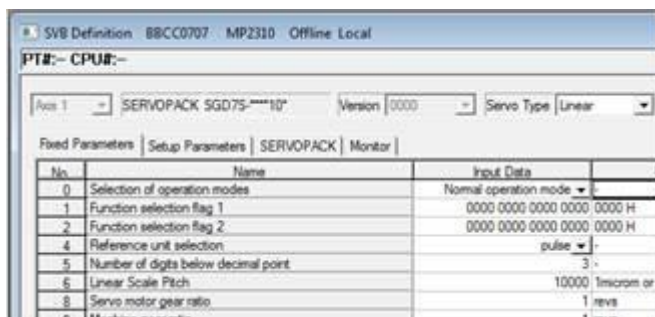
In the Module Configuration, it changed so that the SERVOPACK of the Sigma-7S (SGD7S-\*\*\*\*10\*) Linear type could be assigned.

##### 2. Fixed, Setting, Monitor Parameter

The screen for carrying out a detailed setup of Fixed Parameters, Setting Parameters and Monitor Parameters of the SERVOPACK were added.

##### 3. Servo Parameter, Servo Monitor

The screen for carrying out a detailed setup of Servo Parameter and Servo Monitor of the SERVOPACK were added.



#### 【Support Version】

##### ○Controller

Controller		Support Version
MP2000 Series	Built-in SVB	Ver2.92 or later

##### ○Option Module

Module	Support Version
SVB-01	Ver1.34 or later

#### No. 4 The servo parameter of Sigma-5-mini was added.

The following parameters were added.

##### ○SGDV-\*\*\*E11\*

No.	Parameter Name	Firmware Version
Pn204	Reserved parameter (Do not change)	Ver0028 or later
Pn884	Communications Control 2	Ver0029 or later

##### ○SGDV-\*\*\*E21\*

No.	Parameter Name	Firmware Version
Pn204	Reserved parameter (Do not change)	Ver0028 or later
Pn868	SVCMD_IO Output Signal Monitor Allocations 1	Ver0028 or later
Pn869	SVCMD_IO Output Signal Monitor Allocations 2	Ver0028 or later
Pn884	Communications Control 2	Ver0029 or later

#### 【Support Version】

##### ○Controller

Controller	Support Version
MP3000 Series	It is not dependent on the version.
MP2000 Series	It is not dependent on the version.



## **No. 5 Communication manager was corrected not to freeze by a gateway connection.**

MPE720 sometimes freezes by a gateway connection.

State of occurrence:

if MPE720 operates by a gateway connection(\*), MPE720 sometimes freezes.

\* A gateway connection is the function which connects a remote PC and a target PC by an Ethernet and do the engineering from MPE720 on the remote PC.

Cause:

There was timing which cancels the communication event by a gateway connect function in a communication process.

Measure:

It's corrected so that the communication event isn't canceled by internal process of a gateway connect function.

A change is only a communication process, so it doesn't influence movement of MPE720.

Fixed version of Communication Manager is Ver3.96.

## **No. 6 The functional improvements of MPE720 Ver7.34 were adapted to MPE720**

### **Ver6.39.**

1. Because the mistake had been found in the objection of a fixed parameter of the pulse axis of the PO-01 module, it was corrected.
2. In MPE720 English version, because the mistake had been found in registration of the offset of the register number for the I/O variable of input-output module MTD2310/30 of M-III, registration was corrected.
3. The message objection of a set value of the transmission cycle and the high-speed scanning displayed on the detailed definition screen of build-in SVC was corrected.

○controller

MP2101T

MP2101TM

MPU-01

MPU-01N