

## **Upgrade Information of MPE720 Version6.37**

### **1. Added and Improved Functions**

#### **1.1 Ver.6.37 Upgrade Information**

Items added and features improved from MPE720 version 6.36 to version 6.37 are as follows.

No.	Feature	Classification
1	The $\Sigma$ -V-MD Series (SGDV-MDA02) of 8-axis driving model was added to the slave devices that can be assigned to motion control module SVC.	Add function
2	267IF-01 (CC-Link Master) module was added.	Add function
3	"Non FD" was added to the setting item of the transmission protocol of 217IF-01 module.	Add function

(\*1): When MPE720 Ver.6 before MPE720 Ver.6.31 is already installed in Windows Vista and Windows 7, it may not operate for the newest information of the servo model addition by the axial setup wizard function (the newest information added into the database) updated by after MPE720 Ver.3.33.

Please refer to the following page for operating procedures.

## 【About the restriction matter when using MPE720 Ver.6 in Windows Vista and Windows 7】

When MPE720 Ver.6 is used in Windows Vista and Windows 7, the following phenomena might be generated.

### <Phenomena>

When MPE720 Ver.6 before MPE720 Ver.6.31 is already installed in Windows Vista and Windows 7, it may not operate for the newest information of the servo model addition by the axial setup wizard function (the newest information added into the database) updated by after MPE720 Ver.6.33.

### <Measures>

Using a batch file, the following folder is deleted. (\*1)

C:\Users\UserName(\*2)\AppData\Local\VirtualStore\Program Files\Common Files\YASKAWA\CimScope

### <Procedure>

1.The batch file enclosed by MPE720 Ver.6 installer is copied to a desktop.

#### 【Download Version】

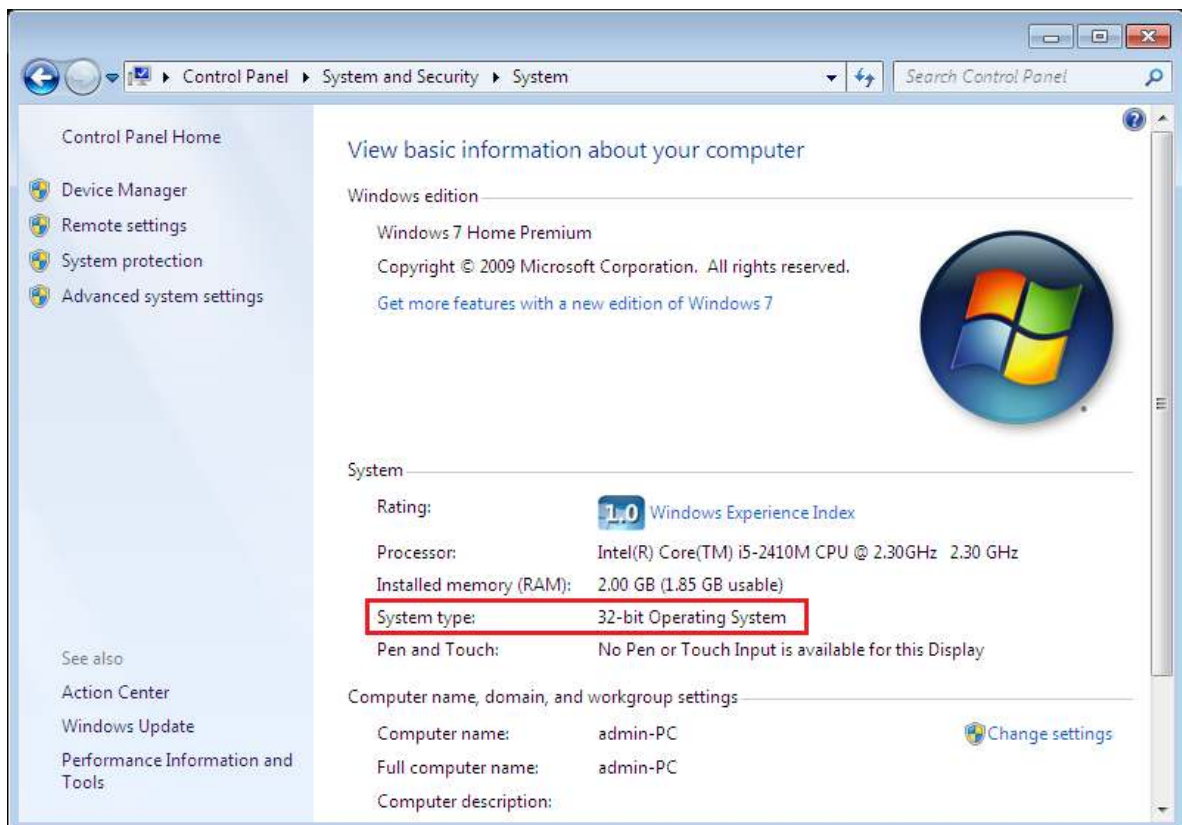
MPE720Ver6\_xxx(\*4)\Tools\Cleanup\32bit\MPE720Ver6\_32bit.bat

#### 【CD Media Version】

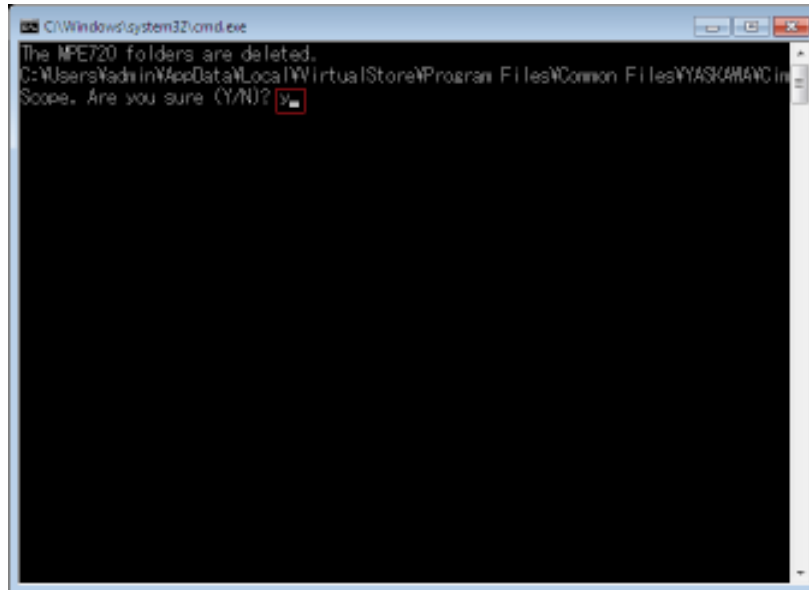
D(\*5)\Tools\Cleanup\32bit\MPE720Ver6\_32bit.bat

2.The copied batch file is performed.

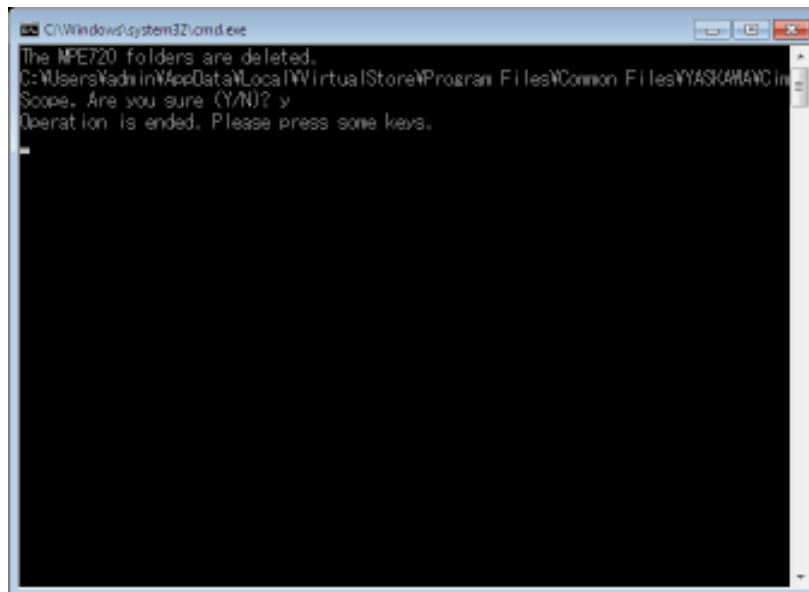
MPE720Ver6\_32bit.bat



3. "y" is inputted on a command prompt and the Enter button is pushed.



4. The Enter button is pushed on a command prompt after deletion.



(\*1): Since a virtual folder is copied by each user account that uses MPE720 Ver6, please carry out by each user account.

(\*2): The user account name that logs in enters.

(\*3): The path changes by version.

(\*4): The path changes by CD/DVD drive.

(\*5): When an installation folder is changed at the time of MPE720 Ver6 installation, delete a virtual folder manually by the installed path.

## 1.2 Past Upgrade Information

No.	Upgrade information	Remarks
1	<a href="#">MPE720 Version .6.02 upgrade information</a>	Version 6.01->Version .6.02
2	<a href="#">MPE720 Version .6.03 upgrade information</a>	Version 6.02->Version .6.03
3	<a href="#">MPE720 Version .6.04 upgrade information</a>	Version 6.03->Version .6.04
4	<a href="#">MPE720 Version .6.05 upgrade information</a>	Version 6.04->Version .6.05
5	<a href="#">MPE720 Version .6.06/ Version .6.07 upgrade information</a>	Version 6.05->Version .6.06 Version 6.06->Version .6.07
6	<a href="#">MPE720 Version .6.08 upgrade information</a>	Version 6.07->Version .6.08
7	<a href="#">MPE720 Version .6.10 upgrade information</a>	Version 6.08->Version .6.10
8	<a href="#">MPE720 Version .6.20 upgrade information</a>	Version 6.10->Version .6.20
9	<a href="#">MPE720 Version .6.21 upgrade information</a>	Version 6.20->Version .6.21
10	<a href="#">MPE720 Version .6.22 upgrade information</a>	Version 6.21->Version .6.22
11	<a href="#">MPE720 Version .6.23 upgrade information</a>	Version 6.22->Version .6.23
12	<a href="#">MPE720 Version .6.24 upgrade information</a>	Version 6.23->Version .6.24
13	<a href="#">MPE720 Version .6.25 upgrade information</a>	Version 6.24->Version .6.25
14	<a href="#">MPE720 Version .6.26 upgrade information</a>	Version 6.25->Version .6.26
15	<a href="#">MPE720 Version .6.30 upgrade information</a>	Version 6.26->Version .6.30
16	<a href="#">MPE720 Version .6.31 upgrade information</a>	Version 6.30->Version .6.31
17	<a href="#">MPE720 Version .6.33 upgrade information</a>	Version 6.31->Version .6.33
18	<a href="#">MPE720 Version .6.34 upgrade information</a>	Version 6.33->Version .6.34
19	<a href="#">MPE720 Version .6.35 upgrade information</a>	Version 6.34->Version .6.35
20	<a href="#">MPE720 Version .6.36 upgrade information</a>	Version 6.35->Version .6.36

## 2. Description

**No. 1 The  $\Sigma$ -V-MD Series (SGDV-MDA02) of 8-axis driving model was added to the slave devices that can be assigned to motion control module SVC.**

### 1. Module Configuration

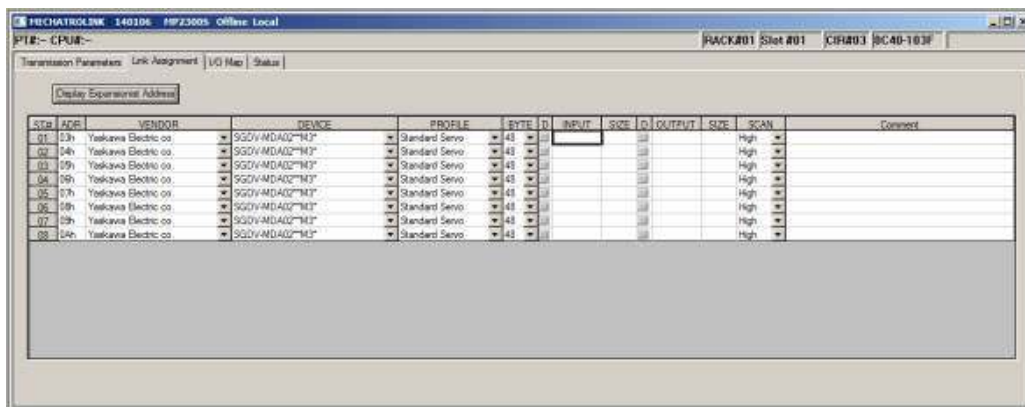
In the Module Configuration, it changed so that the  $\Sigma$ -V-MD Series could be assigned.

### 2. Fixed, Setting, Monitor Parameter

The screen for carrying out a detailed setup of Fixed parameters, Setting Parameters and Monitor Parameters of the  $\Sigma$ -V-MD Series was added.

### 3. Servo Parameter, Servo Monitor

The screen for carrying out a detailed setup of Servo Parameter and Servo Monitor of the  $\Sigma$ -V-MD Series was added.



### 【 Support Version 】

#### Controller

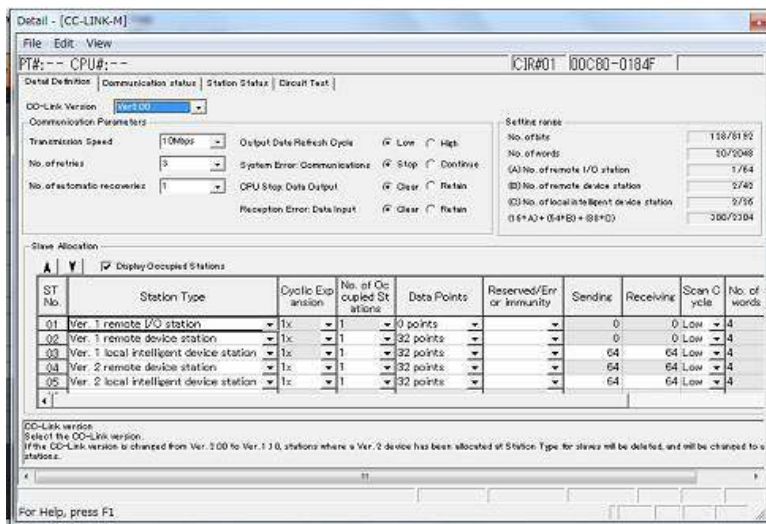
Controller	Support Version
MP2000 Series	It is not dependent on the version. ※About the SigmaWin+ cooperation function via MP, it is due to support in Ver2.88.

#### Option Module

Module	Support Version
SVC-01	It is not dependent on the version. ※About the SigmaWin+ cooperation function via MP, it is due to support in Ver1.12.

## No. 2 267IF-01 (CC-Link Master) module was added.

267IF-01 (CC-Link Master) module was added to the option module with which MP2000 series can be equipped.



### 【 Support Version 】

#### Controller

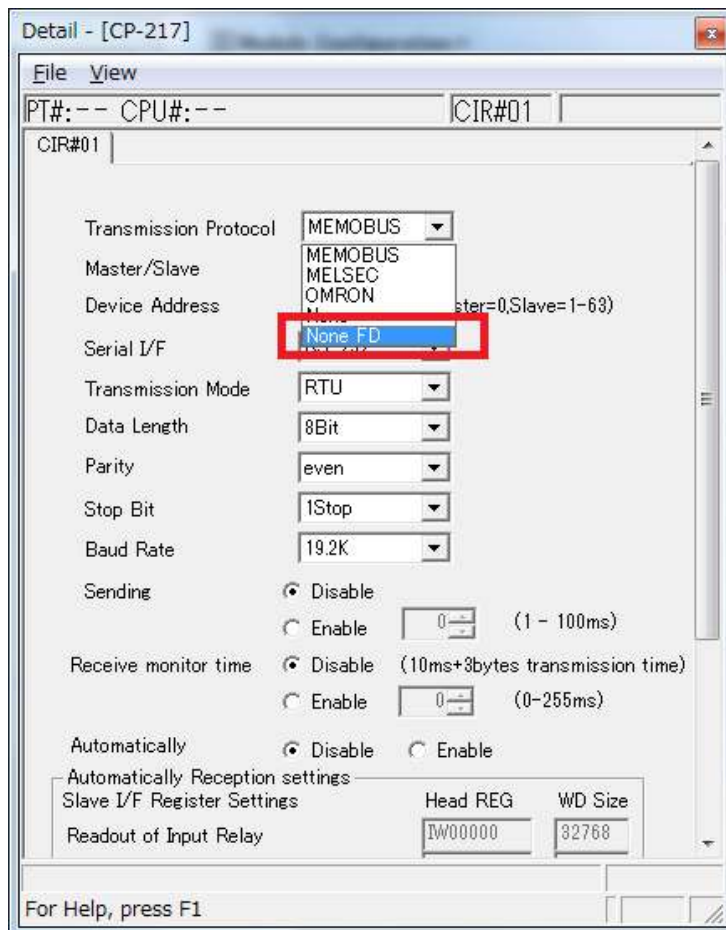
Controller	Support Version
MP2000 Series	Ver2.86 or later

#### Option Module

Module	Support Version
267IF-01	Ver1.00 or later

**No. 3 "Non FD" was added to the setting item of the transmission protocol of 217IF-01 module.**

"Non FD" was added to the setting item of the transmission protocol of 217IF-01 module.



**【Support Version】**

Controller

Controller	Support Version
MP2000 Series	It is not dependent on the version.

Option Module

Module	Support Version
217IF-01	Ver2.00 or later