

## **Upgrade Information of MPE720 Version5.61**

### **1. Added and Improved Functions**

Items added and features improved from MPE720 version 5.60 to version 5.61 are as follows.

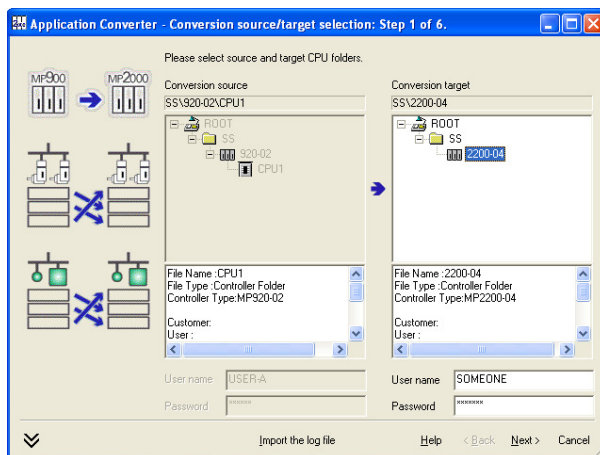
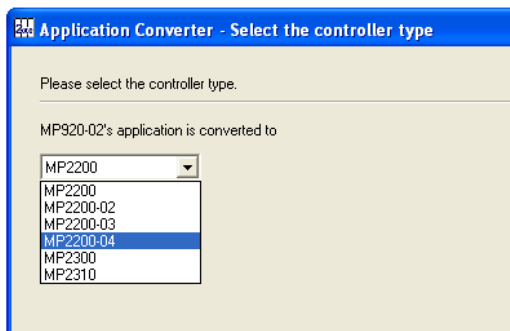
No.	Feature	Classification
1	Application converter of MP2200-04	Improvement
2	Electric gear ratio of linear motor	Bug fix
3	Speed unit selection of PO-01 module	Bug fix
4	Reading dialog of servopack parameters	Bug fix
5	Save and compile motion program	Bug fix
6	Engineering manager of Ver5	Bug fix

## 2. Description

### No.1 Application converter of MP2200-04

With automatic/manual conversion, the application of MP900 series controllers can be converted to the application of MP2200-04.

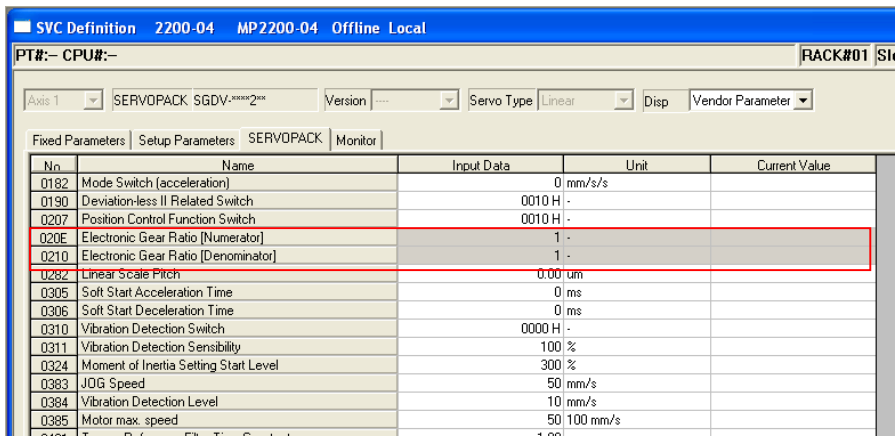
- 1) MP2200-04 can be selected as convert target with automatic/manual conversion.



- 2) The converted application can be executed on MP2200-04.

No.2 Electric gear ratio of linear motor

When linear motor is selected as servo type, Electronic Gear Ratio (Numerator/Denominator) is fixed as 1:1. But the Electronic Gear Ratio in servopack parameter had been enable to be modified. With this improvement, Electronic Gear Ratio is disable to modified.



No	Name	Input Data	Unit	Current Value
0182	Mode Switch (acceleration)	0	mm/s/s	
0190	Deviation-less II Related Switch	0010 H	-	
0207	Position Control Function Switch	0010 H	-	
020E	Electronic Gear Ratio (Numerator)	1	-	
0210	Electronic Gear Ratio (Denominator)	1	-	
0282	Linear Scale Pitch	0.00	um	
0305	Soft Start Acceleration Time	0	ms	
0306	Soft Start Deceleration Time	0	ms	
0310	Vibration Detection Switch	0000 H	-	
0311	Vibration Detection Sensibility	100	%	
0324	Moment of Inertia Setting Start Level	300	%	
0383	JOG Speed	50	mm/s	
0384	Vibration Detection Level	10	mm/s	
0385	Motor max. speed	50	100 mm/s	

No.3 Speed unit selection of PO-01 module

The item of PO-01 module' s Speed unit selection (Owxx03 bit0-3) was wrong. (not %, 0.01% is correct). So it is corrected.

No.4 Reading dialog of servopack parameters

When the servopack parameter screen was opened and reading from servopack was selected, the reading dialog was displayed. But if the reading was failed, this dialog was remained.

The process that closed the reading dialog was executed earlier than the process that was displaying the dialog so that the dialog was not closed. So the order of the processes is corrected.

## **No.5** Save and compile motion program

When the name just like "AH" or "CH" was used as the label in the SFORK instruction of the motion program, a compiling error was occurred.

The hexadecimal judgment processing operated for the label of the motion program. Consequently, the label named AH and BH has been judged as a hexadecimal character string.

The logic is changed to judge whether the character string was used as a label or not, and to judge as a hexadecimal character string when it is not a label.

## **No.6** Engineering manager of Ver5

The error occasionally occurred when the ladder program or the motion program were created or opened on the PLC folder of the file manager. (The engineering manager normal started. )

The error dialog was displayed because the process of the file manager to check whether the engineering manager started or not was too quick to wait for the engineering manager's start.

The ladder and the motion are changed so that the error might never occur though the sleep is put in the check processing as well as other processing, and the engineering manager was starting normally.