

Upgrade Information of MPE720 Version 5.51

1. Added and Improved Functions

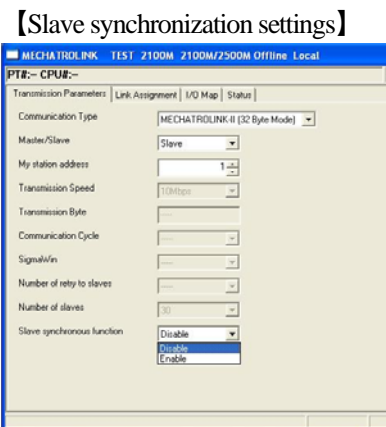
Items added and features improved from MPE720 version 5.50 to version 5.51 are as follows.

No.	Feature	Classification
1	Supports the synchronous slave function in MP2100M	Added function
2	MP2200-03 corresponded to the application converter	Added function
3	Application converter pattern conversion	Added function
4	Supports the JAMSC-IO2950 as distributed IO module for MECHATROLINK	Added function
5	Add the some setting and monitor parameters in SVC-01	Added function
6	Add the servo pack parameter in JUNMA.	Added function
7	Add the mode to select single or multi receive buffer in 218IFA	Improvement
8	MP2100 driver Version upgrade	Improvement
9	SVC enhancing address setting bug	Improvement
10	Leak for the SVC module of the trace manager variable selection function	Preventive
11	File data processing bug when rack is changed.	Preventive
12	For position instruction bug	Preventive
13	Parameter setting display bug	Preventive

2. Description

No.1 Supports the synchronous slave function in MP2100M

The SVB built into MP2100M supports the synchronous slave function.
This, MECHATROLINK-II system, MP2100M be synchronized by a slave, you can synchronize the load balancing system.



【 support products 】

Products	Version
MP2100M (MP2500M)	Ver2.71 or later

No.2 MP2200-03 corresponded to the application converter

A conversion object was able to choose MP2200-03 as an application conversion object, too

No.3 Application converter pattern conversion (For specific user)

The auto convert to the arbitrary composition defined beforehand in addition to existing manual conversion and the auto convert function was supported.

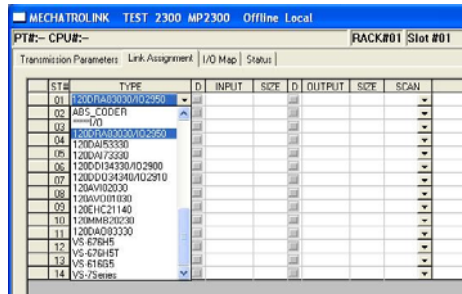
- Supplementation

Because this function is locked so as not to start if specific definition information is not in the system requirements, the function can be used excluding the customer who discloses information.

No.4 Supports the JAMSC-IO2950 as distributed IO module for MECHATROLINK

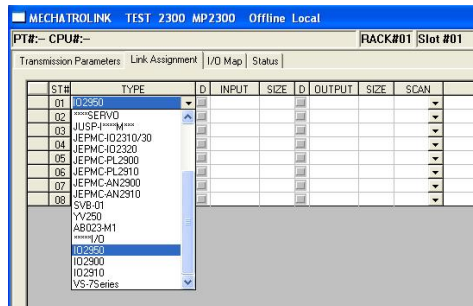
The JAMSC-IO2950 of distributed IO module is supported in MECHATROLINK I / II.

【Selection screen for MECHATROLINK- I】



—JAMSC-120DRA8303/IO2950 displays.

【Selection screen for MECHATROLINK- II】



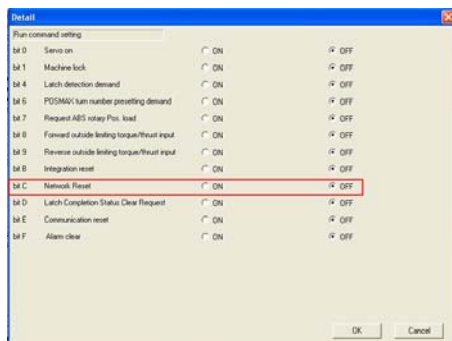
—IO2950 displays.

No.5 Add the some setting and monitor parameters in SVC-01

The setting /monitor parameters are added in SVC-01 motion module.

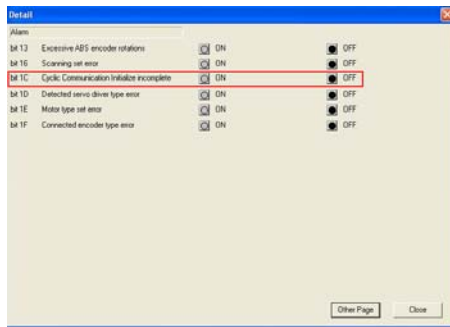
【 Setting parameter 】

OWxx00.bit12: Network reset



【 monitor parameter 】

ILxx04.bit28 : Cyclic communication initialize incomplete



【 support products 】

Module	Version
SVC-01	Ver1.01 or later

No.6 Add the servo pack parameter in JUNMA

The servo pack parameters for limiting the torque are added in JUNMA.

【 Added parameters】

Pn402 : Forward torque limit

Pn403 : Reverse torque limit

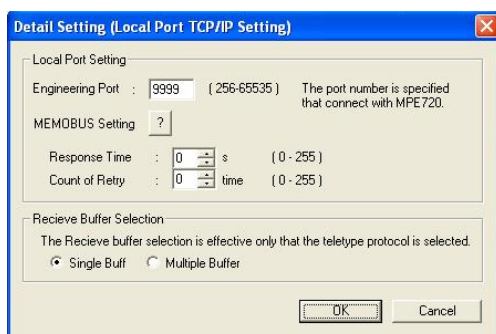
【 Support products 】

Products	Version
JUNMA	Ver0005 or later

No.7 Add the mode to select single or multi receive buffer in 218IFA

The 218IFA is supported the mode to select single or multi receive buffer for non-procedure protocol. The multi receive buffer enables to receive 20 data a connection in same time.

【Select the receive buffer】



【 Support products 】

Controller	Version
MP2300S (Ethernet build into CPU)	Ver2.71 or later
MP2310 (Ethernet build into CPU)	
MP2400 (Ethernet build into CPU)	
MP2200-03 (Ethernet build into CPU)	

No.8 MP2100 driver Version upgrade

MP2100 Driver's version improved to 1.6.0.0 in the version.

No.9 SVC enhancing address setting bug

The mistake was found in the preservation check of the expanded address.

Because the address was not able to be preserved when it was the same and the expanded address was different, it preserved it.

No.10 Leak for the SVC module of the trace manager variable selection function

When the axis was selected by trace manager's variable selection function, the axis with the SVC definition was not displayed in the selection object. Therefore, it included it in the selection object.

No.11 File data processing bug when rack is changed

For the MP900 controller who had two or more racks, there was a case left illegally without module definition data being deleted when I changed the layout of the rack. Therefore, when the rack composition was changed, module details definition information that had been allocated to the rack was deleted.

No.12 For position instruction bug

When the position is taught, a numeric input is done by the number of digits selected by the number of decimal point digits of fixed parameters. When the current state set PULSE, the input was done, as it was when PULSE had been selected as a unit system though the number of decimal point digits had to become invalid. Therefore, if it was PULSE setting, the decimal point was not put.

No.13 Parameter setting display bug

Pn482 and Pn494 of parameters of servo pack (SGDV) were displayed to input the value more than specific certain in spite of the parameter without the sign with the sign.

(Pn482: 327.67ms or more, Pn482: 32.767rev or more)

Therefore, the Pn482 and Pn494 is showed the unsigned data type.