

Upgrade Information of MPE720 Version 5.42

1. Added and Improved Functions

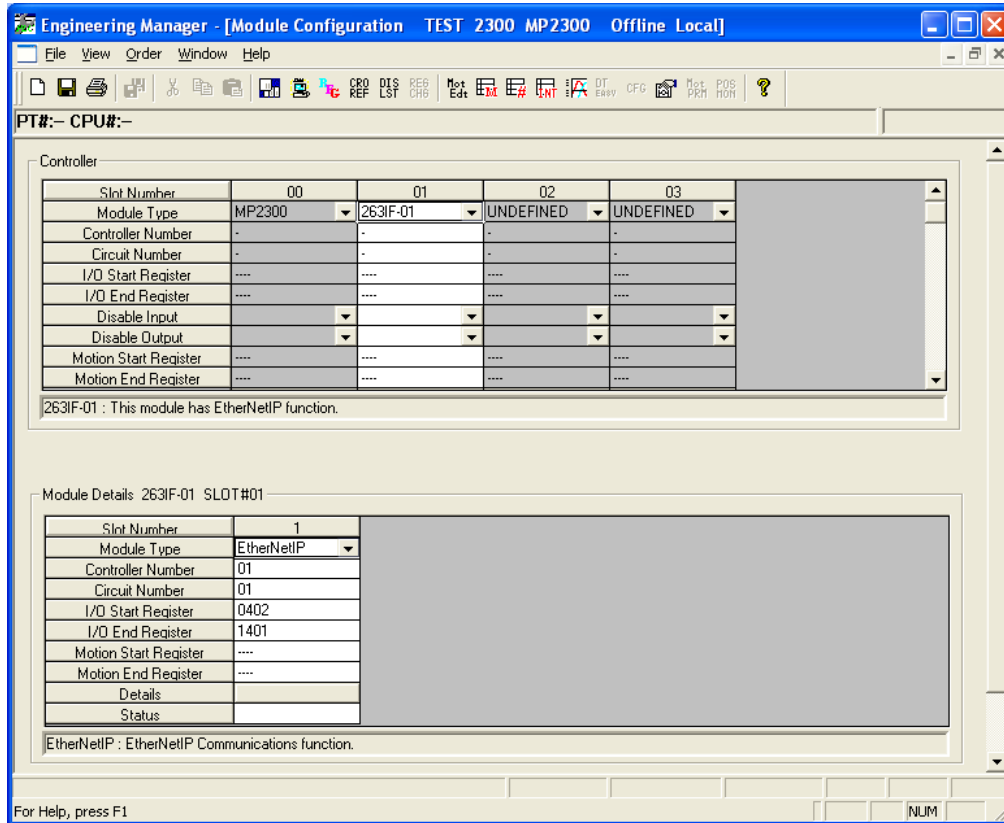
Items added and features improved from MPE720 version 5.41 to version 5.42 are as follows.

No.	Feature	Classification
1	Support to 263IF-01 module	Added function
2	Support to IDM servo	Added function
3	Addition of "Absolute Encoder Reset Completed"	Added function
4	SVA fixed parameter addition	Improvement
5	Change in current value row attribute of I/O module	Improvement
6	SVB monitor parameter addition	Improvement
7	The new ladder map information deletion processing was invalidated.	Preventive
8	The unit display of the monitor parameter was corrected.	Preventive
9	Bug fix of index operation of motion program	Bug fix

2. Description

No.1 Support to 263IF-01 module

It supported to the 263IF-01 module that was the new option module.



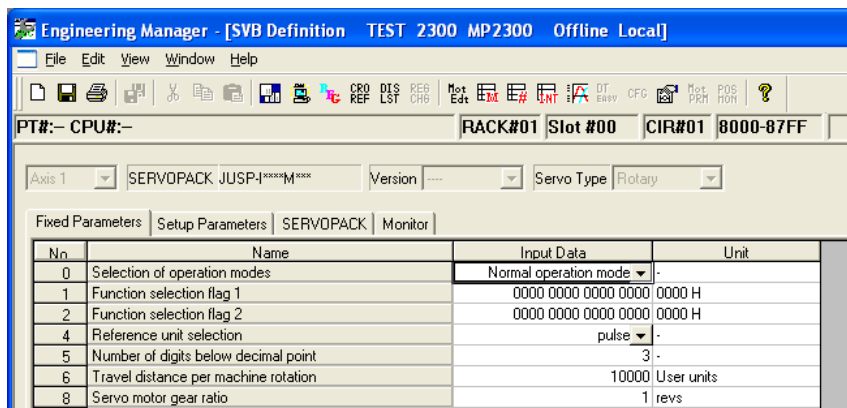
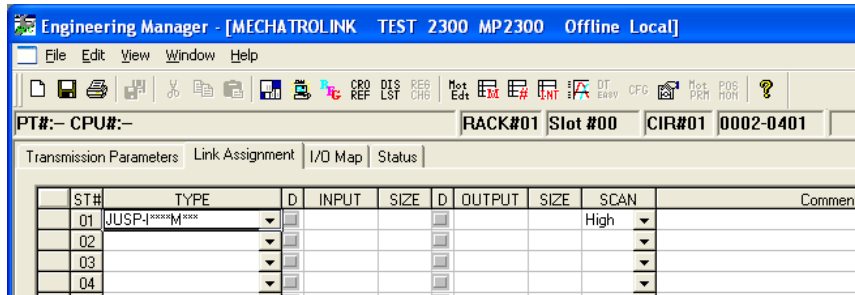
The 263IF-01 module(EtherNet/IP) has the function of EtherNet/IP that mounts standard (EN50170, IEC 61158)CIP (Common Industrial Protocol) where results exist in DeviceNet in the TCP/IP protocol of standard Ethernet. The EtherNet/IP function can handle the I/O message and the Explicit message.

< Message and Explanation >

Message	Explanation
I/O message	The equipment is controlled in real time.
	Interlock communication between controllers
Explicit message	Composition and diagnosis of field equipment

No.2 Support to IDM Servo

It supported to IDM servo for MECHATROLINK-II that was the new servo module.

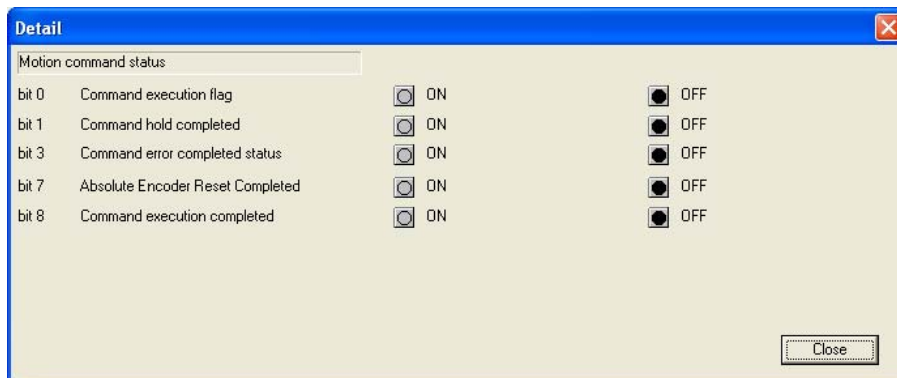


IDM is the one that a basic function (Function to integrate the servodrive part and the Servomotor control.) necessary to compose the SERVOPACK was compactly modulated. And, it can have been handled as a component of the SERVOPACK with the best number of shaft center, shape, and the function corresponding to the application.

No.3 Addition of "Absolute Encoder Reset Completed".

"Absolute Encoder Reset Completed" was added to the monitor parameter of the SVB module.

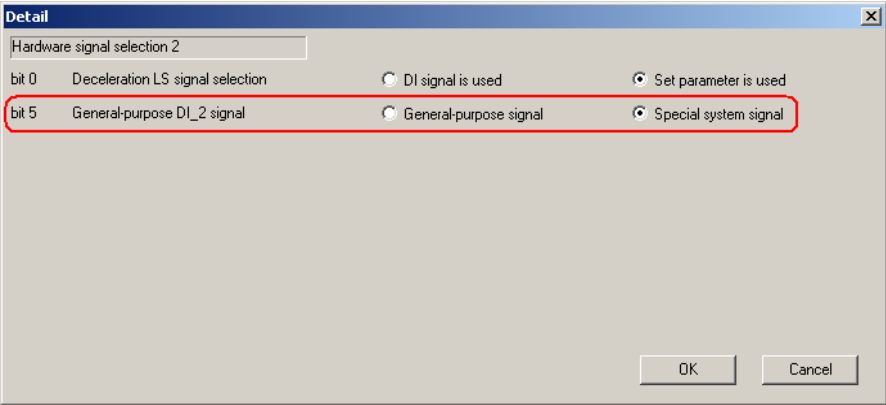
IWxxx09 Motion Command Status (bit 7)



No.4 SVA Fixed Parameter Addition.

In SVA of the MP2000 series, the mode that interchangeable to CP9200 SVA operated about the operation of general-purpose DO_2 it was added.

Fixed parameter No.21 General-purpose DI_2 signal (bit 5)



< Selection item and Operation >

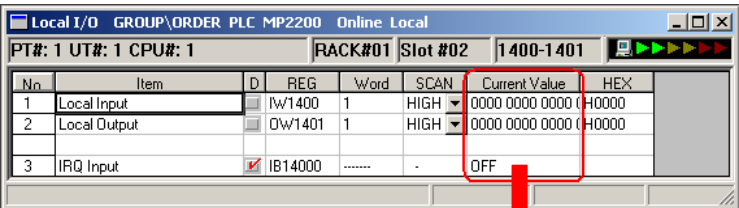
Selection item	Operation
General-purpose signal	Convertible operation
Special system signal	Same as the situation to date.

<Caution>

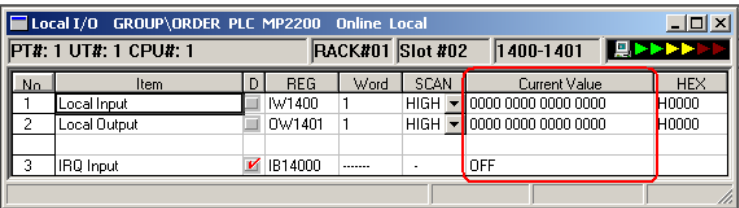
A detailed screen of the fixed parameter is opened, the added parameter is not displayed in a detailed screen when data that before MPE720 version 5.42 makes setting effective is edited

No.5 Change in Current Value Row Attribute of I/O Module

When the current value is get of I/O and BIN is displayed like the LIO module and the DO module, etc., the digit number of display might not be able to display 16 bit by the system requirements. It was corrected that the width of the row in the grid was able to be treated in changeability to display it even for this case.



When "Current Value" cannot display 16 bit.

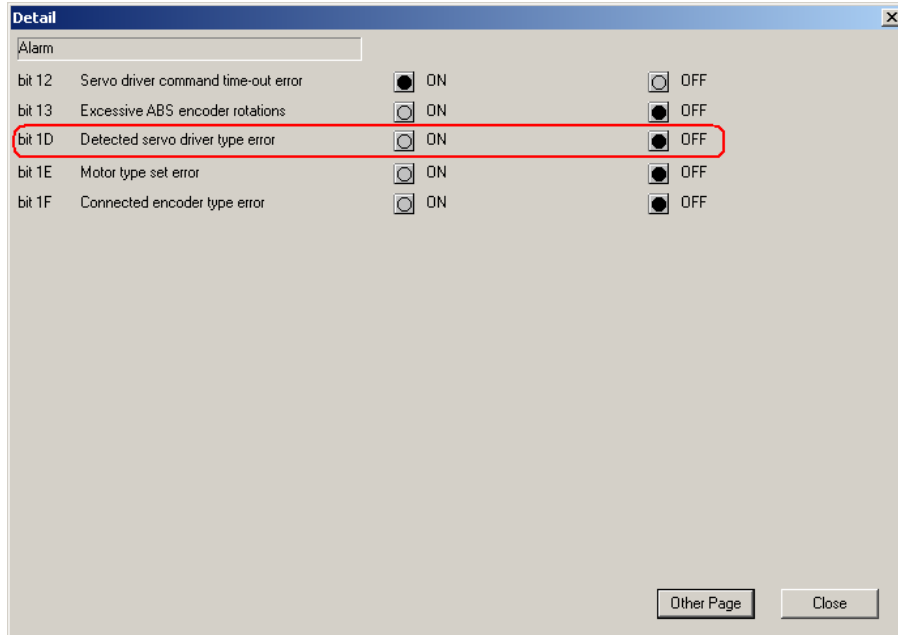


It came to be able to display 16 bit by expanding the width of the row of "Current Value".

No.6 SVB Monitor Parameter Addition

"Detected servo driver type error" was added to bit1D of motion monitor parameter 0x04 of SVB.

When the SERVOPACK allocated by the link assignment of the SERVOPACK and SVB actually connected with the motion module is different, bit1D is turned on.



*: In this function, there is the following operation restrictions.

< SERVOPACK and Operation Restriction >

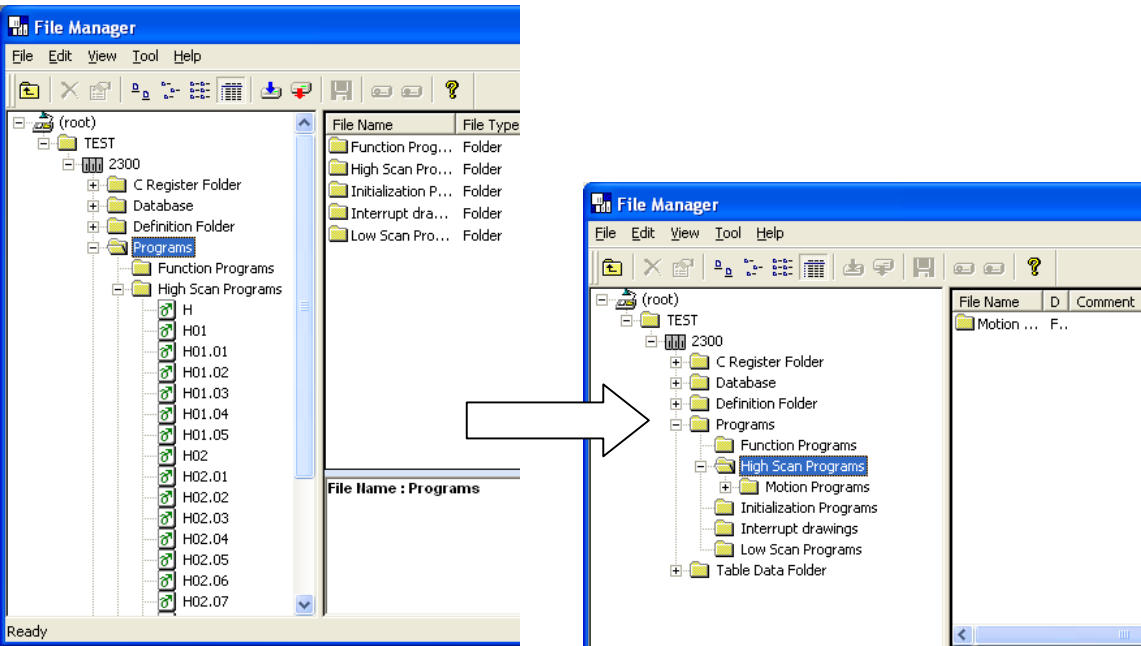
SERVOPACK	Operation restriction
Before Sigma-3	The error check is not available.
Sigma-5 or later	The error check is available.

< Supported Version >

Controller	Supported version
MP2000 series controller	Version 2.64
Option SVB	Version 1.24

No.7 The New Ladder Map Information Deletion Processing was Invalidated.

This is modified correctly that when the file manager terminated abnormally while using the new ladder editor, the phenomenon the drawing list's disappearing from the file manager had been generated.



No.8 The Unit Display of the Monitor Parameter was Corrected.

The unit display of the monitor parameter No.32 (Speed reference output monitor) of the PO module was corrected as follows.

The unit display is changed from "0.01%" to "User units/H Scan".

Fixed Parameters Setup Parameters Monitor				
No.	Name	REG	Monitor Data	Unit
0	Run status	Iw/9000	0000 0000 0000 0000	-
1	Parameter number when range over is generated	Iw/9001	0	-
2	Warning	IL9002	0000 0000 0000 0000 0000 0000 0000 0000	-
4	Alarm	IL9004	0000 0000 0000 0000 0000 0000 0000 0000	-
8	Motion command response code	Iw/9008	No Command	-
9	Motion command status	Iw/9009	0000 0000 0000 0000	-
10	Subcommand response code	Iw/900A	No Command	-
11	Subcommand status	Iw/900B	0000 0000 0000 0000	-
12	Position management status	Iw/900C	0000 0000 0000 0000	-
14	Target position in machine coordinate system (TPoS)	IL900E	0	User units
16	Calculated position in machine coordinate system (CPoS)	IL9010	0	User units
18	Machine coordinate system reference position (MPoS)	IL9012	0	User units
20	System reservation (DPoS)	IL9014	0	User units
22	Machine coordinate system feedback position (APoS)	IL9016	0	User units
30	Number of POSMAX turns	IL901E	0	Turn
32	Speed reference output monitor	IL9020	0	User units/H Scan
86	Fixed parameter monitor	IL9056	0	-
88	General-purpose DI monitor	Iw/9058	0000 0000 0000 0000	-

No.9 Bug Fix of Index Operation of Motion Program

When the index register (i and j) was operated as a register (not index of other register), the operation was not normally possible. And then, it was modified correctly.

