

Upgrade Information of MPE720 Version 5.41

1. Added and Improved Functions

Items added and features improved from MPE720 version 5.40A to version 5.41 are as follows.

No.	Feature	Classification
1	Support to MP940 of application converter.	Added function
2	Support to comparison processing of table data.	Improvement
3	Improvement of the check operation of the transfer function.	Improvement
4	Bug of start from User Menu (SVB)	Preventive
5	Bug of the run time error when the media transfer.	Preventive
6	Bug of Save confirmation in System Definition	Preventive
7	Bug of Input/ Output disable operation of I/O message communication.	Preventive
8	Spelling error.	Preventive
9	Bug of unit of display of SVB linear type for MP2310/ MP2300S.	Preventive
10	Bug of the fixed parameter input range.	Preventive
11	It is possible to set the size which exceeds the range of the enable allocation of 260IF.	Preventive
12	Bug which using one-byte katakana in the motion program.	Bug fix
13	Incorrect PLC name check.	Bug fix
14	The current value of all ladders was displayed without shifting.	Bug fix

2. Description

No.1 Support to MP940 of application converter.

MP940 can be selected at target of automatic conversion in the application converter.

Target controller: MP940/ MP940M/ MP940D

MP940	Enable to convert to MP2000 series controller
MP940/MP940M	MP2300 MP2310 MP2300S
MP940D	MP2300 MP2310

*: S drawing is cannot be converted in the MP2000 series.

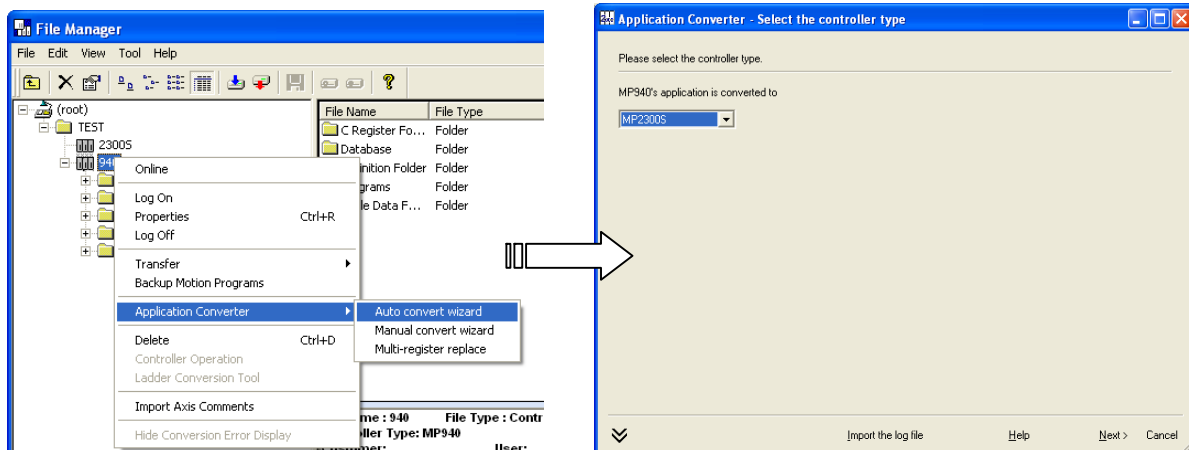
*: S register is without target of application converter.

*: S scan is converted into H scan when converting to the MP2000 series.

*: MLINK definitions of MP940M is converted into M-II (32 byte/ 0.5ms) in the MP2300S.

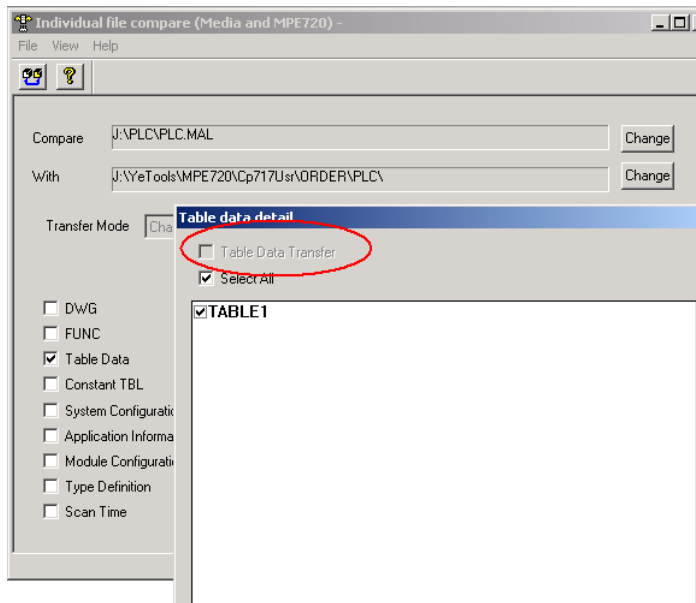
I/O modules allocated to MLINK definition are converted into ***** I/O when there is no convertible M-II compatible module, because I/O module cannot use in the M-II.

*: When 261IFS has been selected of 6th slot of MP940, it is without target of application converter.



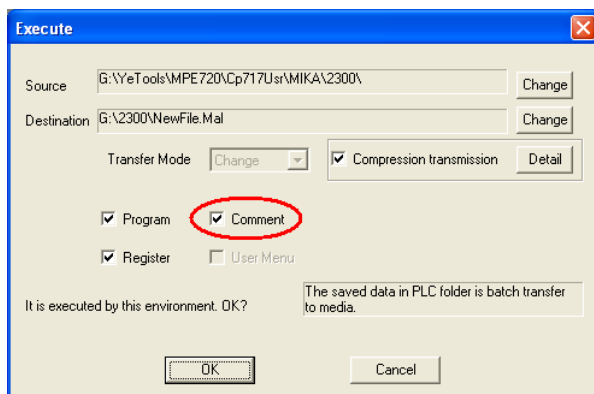
No.2 Support to Comparison processing of table data.

Both online/ off-line table data were added to the comparison target though data table was without target of the comparison.



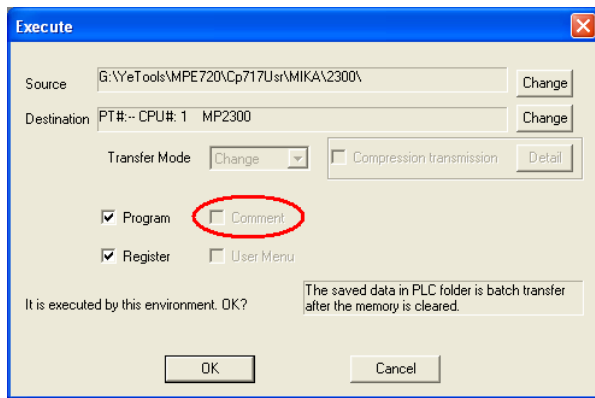
No.3 Improvement of the check operation of the transfer function.

The check the check box was maintained internally coming off from the check even if online transfer was executed after off-line transfer was executed by the retaining. Because, uncheck the checkbox automatically which executing off-line transfer after check the checkbox of the comment and executing online transfer at Batch transfer menu (program/ register/ comment).

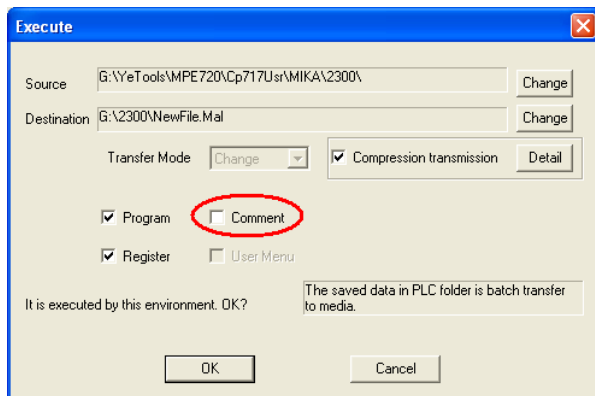


1. Check the checkbox of comment when off-line transfer.





2. Start the online transfer.



3. Uncheck the checkbox automatically when off-line transfer.

No.4 Bug of start from User Menu (SVB)

It was modified because "Don't support module." was displayed when SVB detailed definition screen was register with user menu and SVB detailed definition screen was started from the user menu.

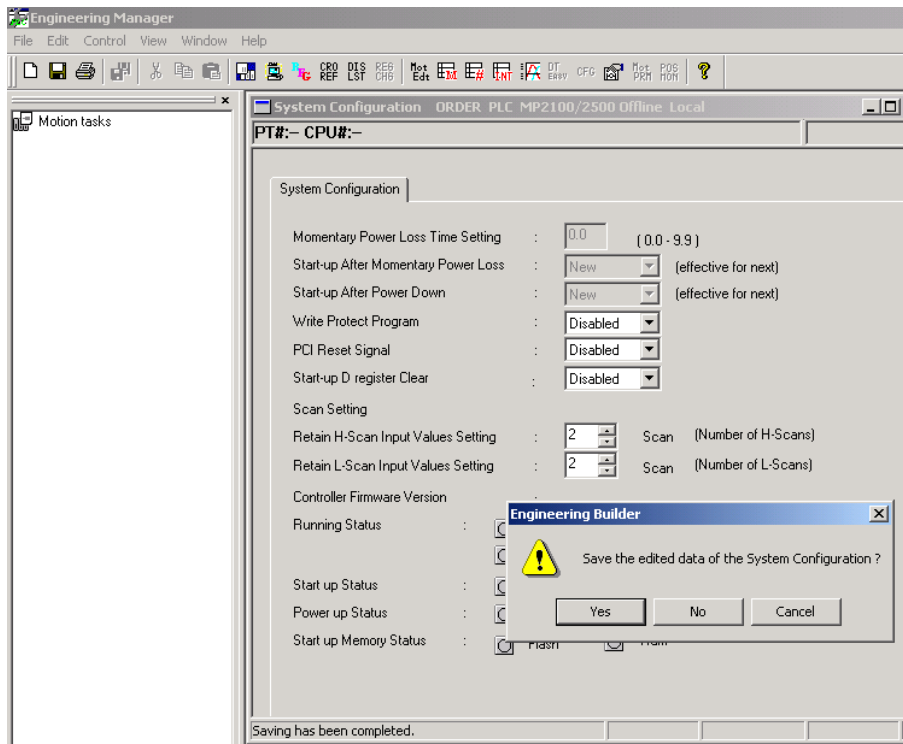
And it was modified that the same message was displayed when the tab of the parameter of SVB detailed definition screen which started from the user menu was switched.

No.5 Bug of the run time error when the media transfer.

The error message will be displayed and transfer was interrupted, when read-only file exists at target and cannot be deleted. Because, the run time error occurred when the target file is read-only file, when executing the compression transfer from MPE720 to media.

No.6 Bug of Save confirmation in System Definition

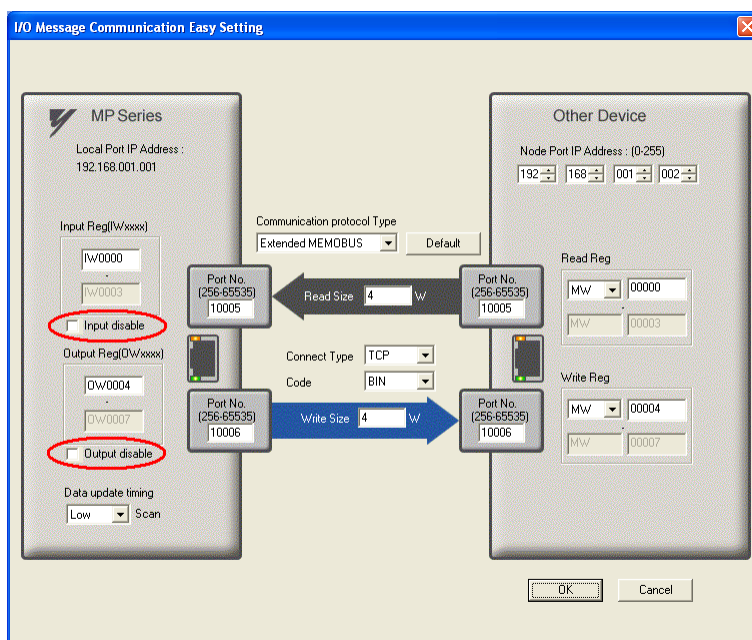
It was modified that the message was displayed only when there was an edit. Because the message "Save the edited data of the System Configuration ?" was displayed though the System Definition was saved when log off the PLC folder with the cursor moved to "Retain H-Scan Input Values Setting" or "Retain L-Scan Input Values Setting" column of "Scan Setting" of the System Definition.



No.7 Bug of Input/ Output disable operation of I/O message communication.

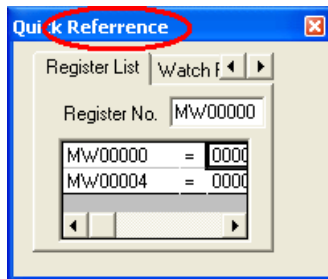
The operation of "Input disable" and "Output disable" were different on I/O message communication of 218IFA detail definition window.

"Input disable" is the check box is checked, the check is maintained until the check box is cleared. But "Output disable" is the checkbox will be unchecked when "Protocol type" is changed or "Default setting" button of the Easy Setting is clicked. So, The value of "Output disable" was not cleared with the "Default" transaction when "Protocol type" is changed or "Default setting" button of the Easy Setting is clicked.



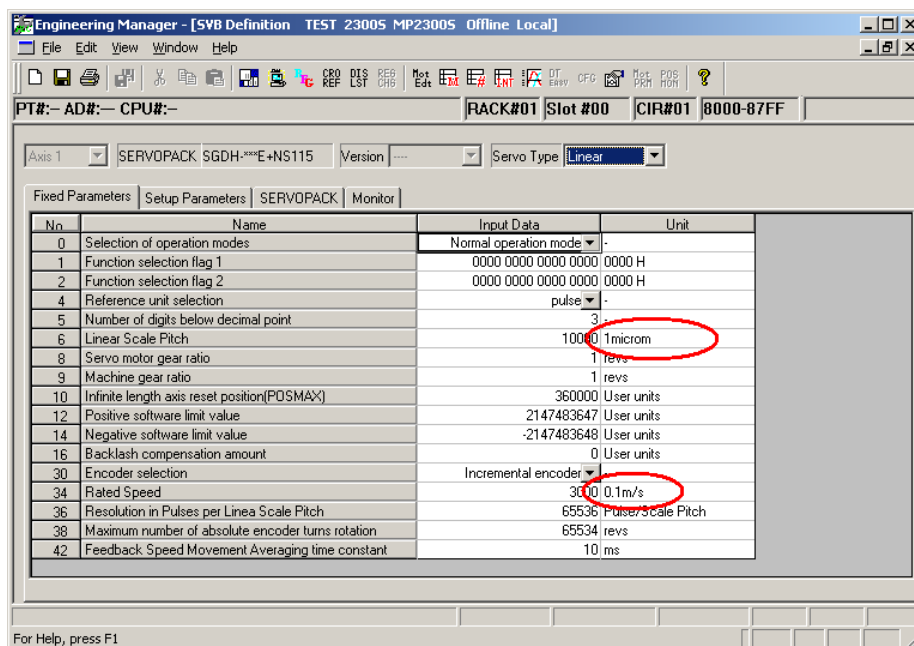
No.8 Spelling error.

It was modified that the title was spelling error which displayed double click the Quick reference is displayed as the Engineering Manager to convert to a floating window.



No.9 Bug of unit of display of SVB linear type for MP2310/ MP2300S.

It was modified that when the Servo Type of motion parameter of SVB was set in the Linear, the unit of No.6 "Linear Scale Pitch" was displayed by mistake as "microm". And, it was modified that the unit of No.34 "Rated Speed" was displayed by mistake as "0.1m/s".



No.10 Bug of the fixed parameter input range.

It was changed from "0 to 2147483647" to "-2147483648 to 2147483647". Because the setting range of the Fixed parameter No.16 "Backlash compensation amount" of MP2100 built-in SVB was "0 to 2147483647".

SVB Definition ORDER PLC MP2100/2500 Offline Local

PT#:- CPU#:- RACK#01 CIR#01 8000-87FF

Axis 1 SERVOPACK SGDH-***E+NS115 Version ---- Servo Type Rotary

Fixed Parameters Setup Parameters SERVOPACK Monitor

No.	Name	Input Data	Unit
0	Selection of operation modes	Normal operation mode	-
1	Function selection flag 1	0000 0000 0000 0000	0000 H
2	Function selection flag 2	0000 0000 0000 0000	0000 H
4	Reference unit selection	pulse	-
5	Number of digits below decimal point	3	-
6	Travel distance per machine rotation	10000	User units
8	Servo motor gear ratio	1	revs
9	Machine gear ratio	1	revs
10	Infinite length axis reset position(POSMAx)	360000	User units
12	Positive software limit value	2147483647	User units
14	Negative software limit value	-2147483648	User units
16	Backlash compensation amount	0	User units
30	Encoder selection	Incremental encoder	-
34	Rated motor speed	3000	min-1
36	Number of pulses per motor rotation	65536	pulses/rev
38	Maximum number of absolute encoder turns rotation	65534	revs
42	Feedback Speed Movement Averaging time constant	10	ms

0 - 2147483647 : 1

No.11 It is possible to set the size which exceeds the range of the enable allocation of 260IF.

It was modified that the size allocated in each slave bureau when 260IF are used upper limit is 256 bytes in the specification. However, the size which exceeded the range was able to be actually allocated.

No.12 Bug which using one-byte katakana in the motion program.

It was modified that it was likely to become an error when saving or wrong code is generated occasionally which using one-byte katakana (character code is 0x80 or more) in the motion program.

Motion Editor TEST 23005 MP23005 Offline Local[MPM001]

PT#:- AD#:- CPU#:-

TEST

```

00001
00002
00003
00004
00005

```

```

"MotionProgram±
IF MW00 ==1;
IEND;
END;

```

Error List

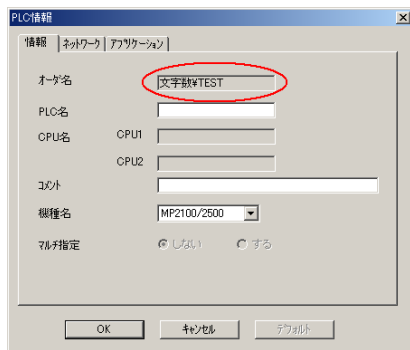
Compilation Error.
After error correction, please compile again.

Error Row	Error Description
2	Syntax Error

Close

No.13 Incorrect PLC name check.

It was modified that delimitation position was judged according to the character string used by mistake. Because it was a transaction divided at each delimitation of the name input to the group folder/ order folder/ PLC folder, and there were a problem in the judgment transaction of separating character "¥ (5C)".



No.14 The current value of all ladders was displayed without shifting.

The current value of the ladder program in ladder program which was below MSEE instruction was displayed correctly. Because the display of the current value of the instruction which was below MSEE instruction was shifted in new ladder program.