

MPE720 improvement item and bug fix change

1. Function addition and improvement item

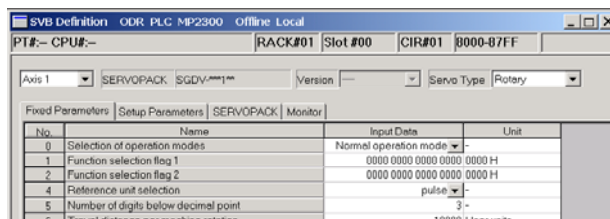
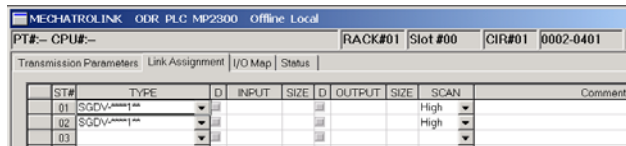
Items added and features improved from MPE720 version 5.38 to version 5.39 are as follows.

No.	Function item	Classification
1	Support to Sigma-5 Servopack	Function addition
2	Support to MNET-01 module	Function addition
3	Improvement of application converter	Function addition
4	Scoping expand print of new ladder (improvement).	Function addition
5	Support to D register of Multi-register replace (improvement)	Function addition
6	"CpPnlStatus Error" error dialog non-display when communication is disconnected	Function addition
7	Support to user constant Pn0000 of SJDE-**AN*	Function addition
8	Fixed parameter edit at servo ON	Unprevention
9	Communication process GW function connection trouble	Unprevention
10	Defective operation in simple mode	Unprevention
11	Data trace condition setting defective operation	Unprevention
12	Servo pack details menu operation trouble	Unprevention
13	When the teletype protocol is selected by 218IFA details definition, the setting data is defective.	Unprevention
14	Saving trouble of setup parameter of MP930	Unprevention
15	Detailed screen display trouble of CNTR-01 module	Bug fix
16	Crossing print when changing line is included	Bug fix

2. Correction content explanation

No.1 Support to Sigma-5 Servopack

It supported to SGD_V-***1** that was the new Servopack.



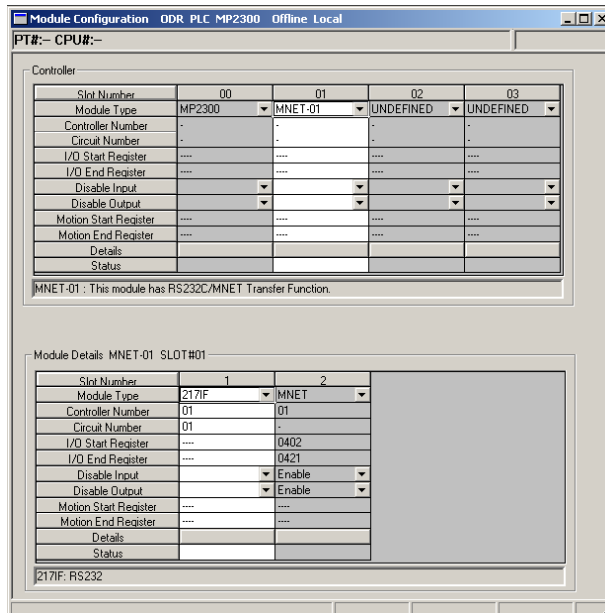
*: Please apply the following versions when you use this Servopack.

SVB with built-in controller is used: Since MP2000 system software version 2.61.

Option SVB is used: Since SVB-01 system software version 1.22.

No.2 Support to MNET-01 module

It supported to the MNET-01 module that was the new option module. The MNET-01 module has the function of 217IF and MNET.

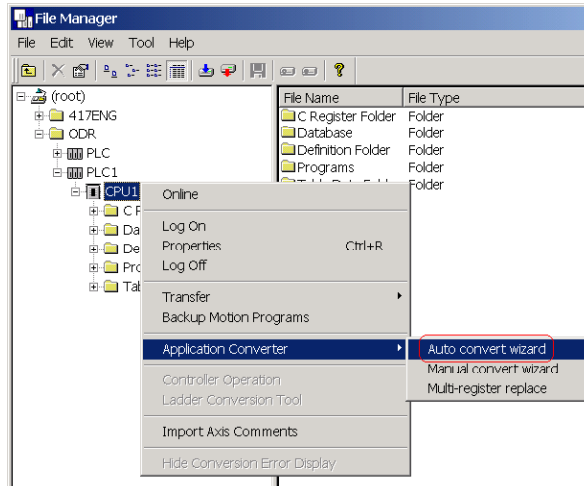


*: This module can be used since MP2000 system software version 2.61.

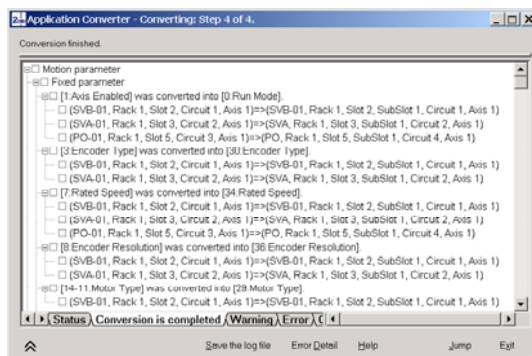
No.3 Improvement of application converter

The conversion specification of a current application converter is reviewed to do the application conversion into MP900->MP2000 easily, and the function has been improved.

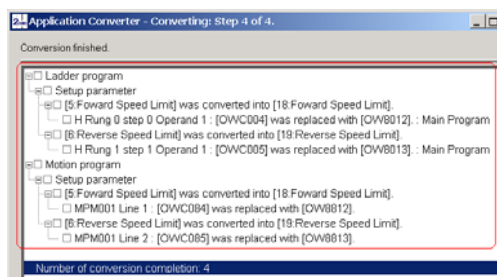
- The auto convert function of the module was supported.



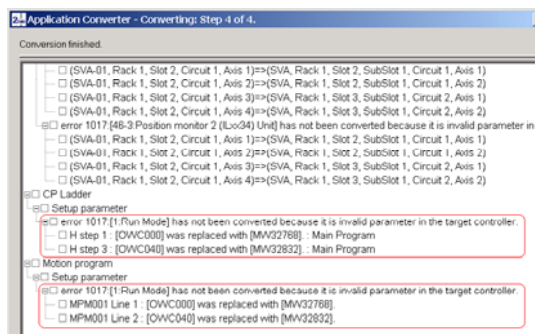
- The conversion rule of the parameter was reviewed.



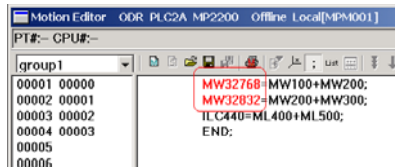
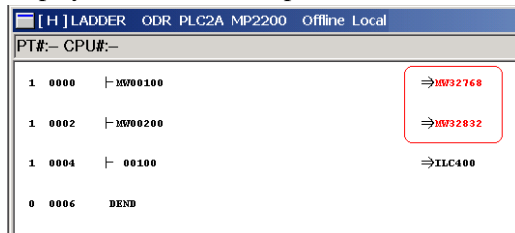
- The display format of the log was changed (support of the tree view).



-: The register that was not able to be converted was converted into an unused M register area with MP900.

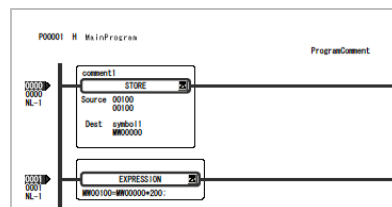
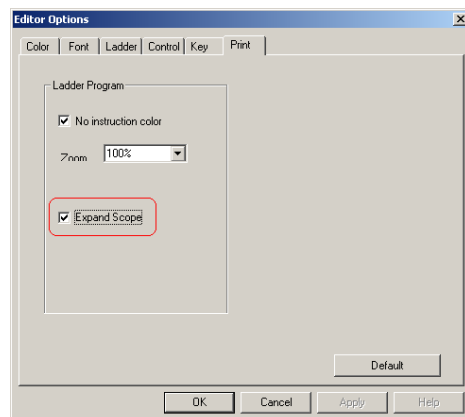


- After it had converted it, the register for which the replacement was necessary made the conversion part display in red-letter, and specified.



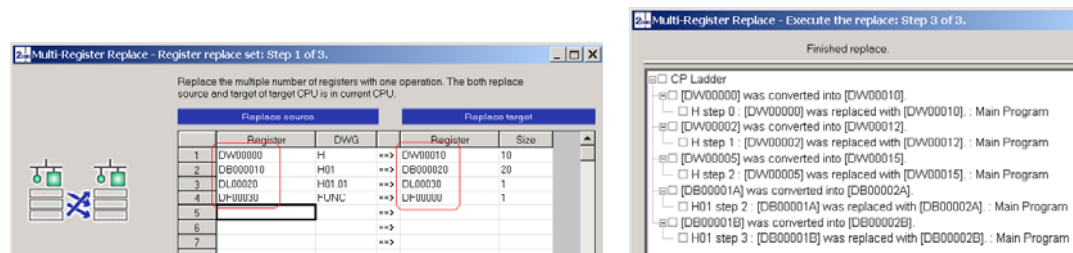
No.4 Scoping expand print of new ladder (improvement).

The new ladder program was able to be printed with Scoping ON.



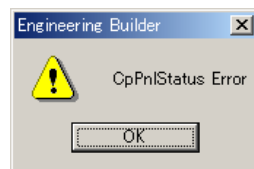
No.5 Support to D register of Multi-register replace (improvement)

To replace D register of DWG, "Multi-register replace" function has been improved.



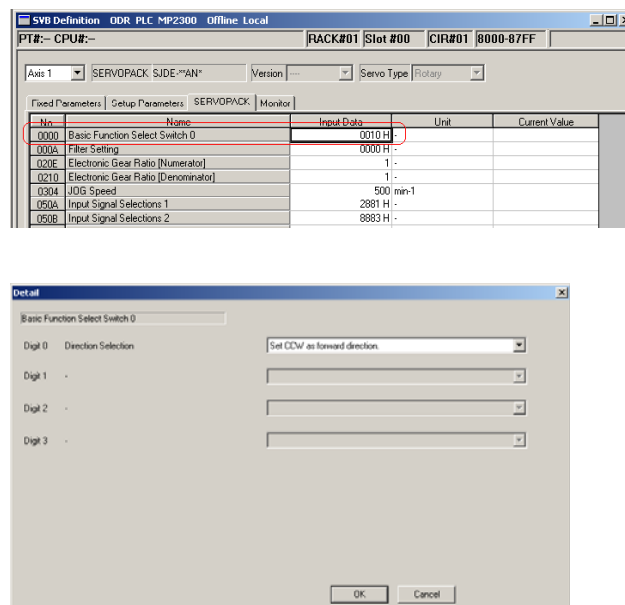
No.6 "CpPnIStatus Error" error dialog non-display when communication is disconnected

Error dialog "CpPnIStatus Error" that had been displayed when the communication was disconnected was not displayed.



No.7 Support to user constant Pn0000 of SJDE-**AN*

User constant Pn0000 of SJDE-**AN* was made a parameter that was able to be operated.



No.8 Fixed parameter edit at servo ON

A fixed parameter is edited when the axis is servo ON. A fixed parameter was not able to be saved when moving to the setup parameter tab while edited and the configuration parameter was displayed. The edited data was displayed when moving to the fixed parameter tab again. However, it was different from actual data because it was not saved. The message of the saving confirmation was not displayed even if the motion parameter screen was shut as it was, and saving was not done. When a fixed parameter was opened again, it returned the data before it edited it. Therefore, this was corrected.

No.9 Communication process GW function connection trouble

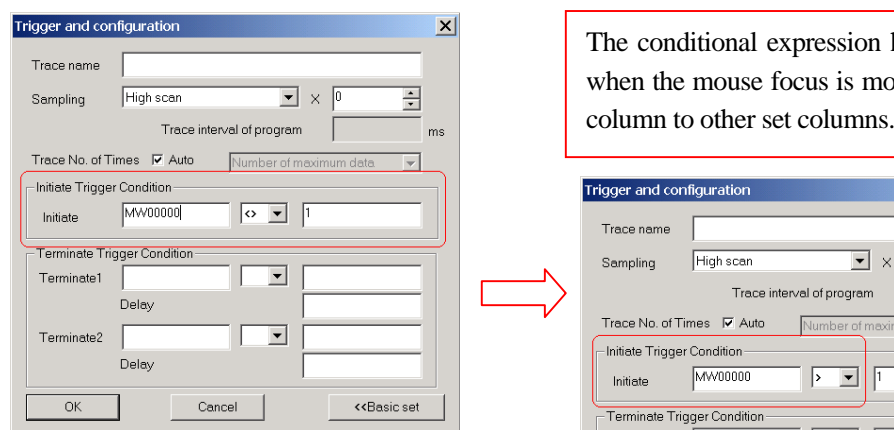
There was a thing that the communication froze when the machine with a good spec was connected with MP2500 in the environment with which GW was connected. Therefore, this was corrected.

No.10 Defective operation in simple mode

The problem that the screen did not open by displaying the parameter screen occurred when the PLC folder of the MP2000 series was made and the execution mode was set to a simple mode. Therefore, this was corrected.

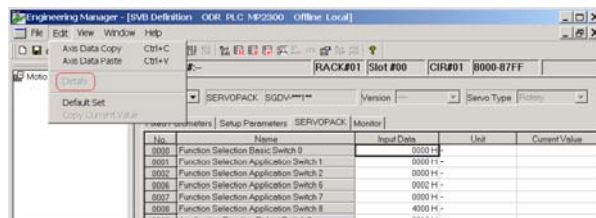
No.11 Data trace condition setting defective operation

When the mouse focus was moved after the trace manager set the trigger condition, the trigger condition had been initialized. Therefore, this was corrected.



No.12 Servo pack details menu operation trouble

"Details" in the edit menu of the servo pack parameter screen did not operate correctly. Therefore, this was corrected.

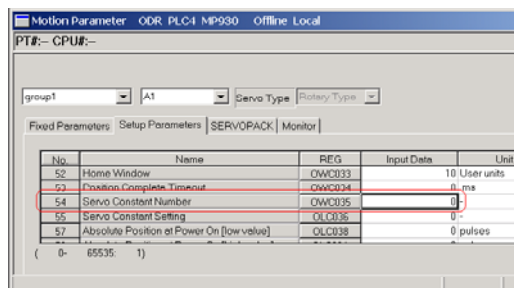
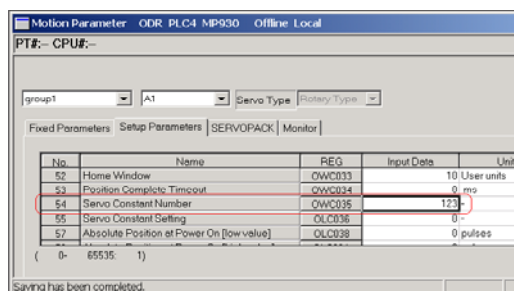


No.13 When the teletype protocol is selected by 218IFA details definition, the setting data is defective.

When the protocol was changed to the teletype protocol after the extension memo bus was selected on 218IFA details definition screen, the automatic reception setting in the packet data was effective. Originally, because this was invalid, this was corrected.

No.14 Saving trouble of setup parameter of MP930

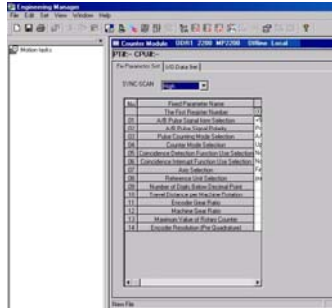
When the value of setup parameter No54 was input and saved on the motion parameter screen of MP930, it seemed to have completed saving normally. However, it returned to the value before it saved it when the tab was switched, and the value was not saved. Therefore, this was corrected.



It returns to the value before it saves it when the tab is switched.

No.15 Detailed screen display trouble of CNTR-01 module

The detailed definition screen was interrupted in the blank part when a task manager and a quick watch were opened when a detailed screen of the CNTR-01 module was opened, and a set column was not seen occasionally. Therefore, this was corrected.



No.16 Crossing print when changing line is included

When the crossing print result becomes changing line, the crossing print result has been missed. Therefore, this was corrected.