

MPE720 improvement item and bug fix change

1. Function addition and improvement item

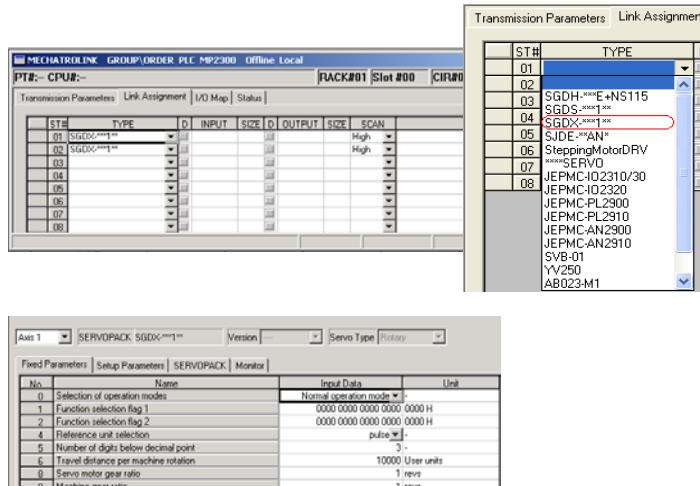
Items added and features improved from MPE720 version 5.36 to version 5.37 are as follows.

No.	Function item	Classification
1	SGDX servo addition	Function addition
2	JUNMA servo addition	Function addition
3	A-Net/A-Link module addition	Function addition
4	A-Net/A-Link specification change	Function addition
5	USB driver update	Function addition
6	For CC-LINK module	Function addition
7	For high-resolution evaluation SVR	Function addition
8	For debugging information export when C language error occurs	Function addition
9	Motion parameter addition	Function addition
10	Motion command addition	Function addition
11	MP920 serial and setting screen specification change	Function addition
12	Four digit correspondence of Crorifarens result display	Function addition
13	Change of the order of displaying mechatronics link	Function addition
14	Display trouble of present value of new ladder	Bug fix
15	AnyWire status display trouble	Bug fix
16	Communication process USB connection trouble- (1)	Bug fix
17	Communication process USB connection trouble- (2)	Bug fix

2. Correction content explanation

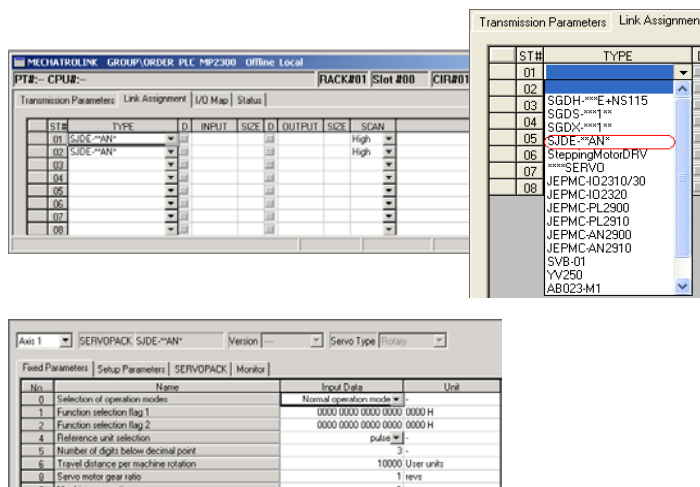
No.1 SGDx servo addition

It corresponded to the SGDx-**** servo as a new servo module.



No.2 JUNMA servo addition

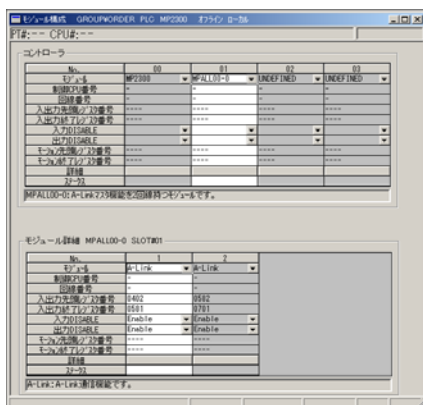
It corresponded to the SJDE-**** servo as a new servo module.



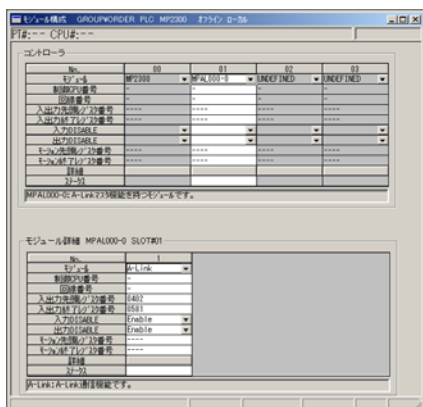
No.3 A-Net/A-Link module addition

The following three modules that were the sisters modules of MPALN00-0 that had already been released were added as a new module made of ALGO System.

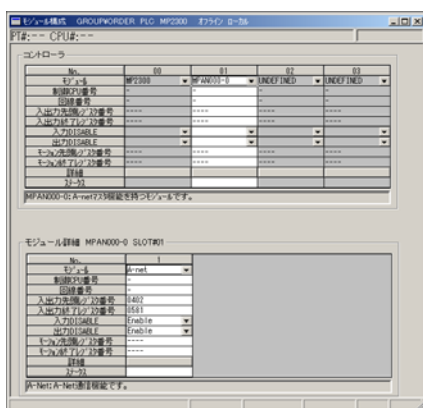
- MPALL00-0 (A-Link x2)



- MPAL000-0 (A-Link x1)



- MPAN000-0 (A-net x1)



No.4 A-Net/A-Link specification change

It corresponded to this because it had been changed as reported the status specification of A-Net/A-Link of an existing AFMP-00 module to be a current area of 3W/5W along with the new module addition to the area of 4W/4W.

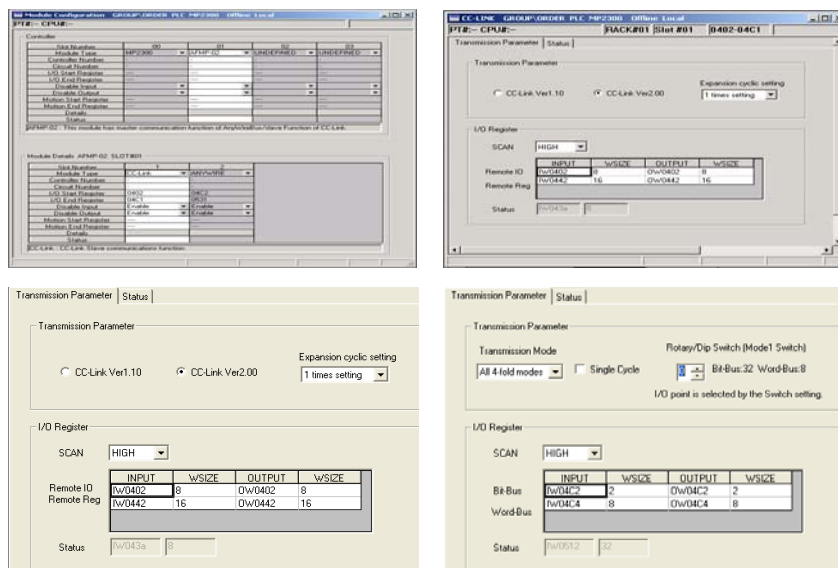
No.5 USB driver update

It used it with both MP2000 series and servos by changing *.inf file specification of the USB driver that had used it up to now corresponding USB about SGDX.

The driver version becomes 1.0.0.3.

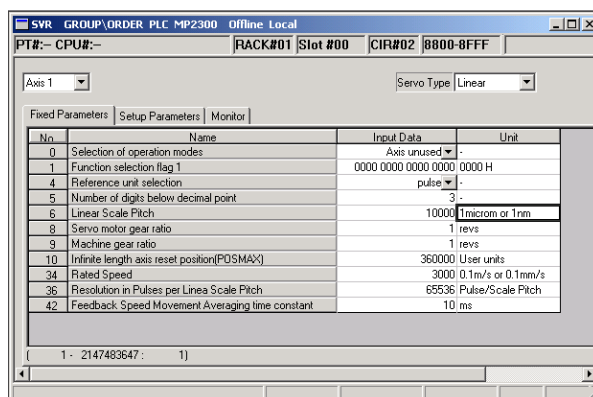
No.6 CC-LINK/ANYWIRE module addition

It corresponded to the AFMP-02 module with CC-LINK and the ANYWIRE function.



No.7 Transferring message improvement

For high-resolution evaluation SVR



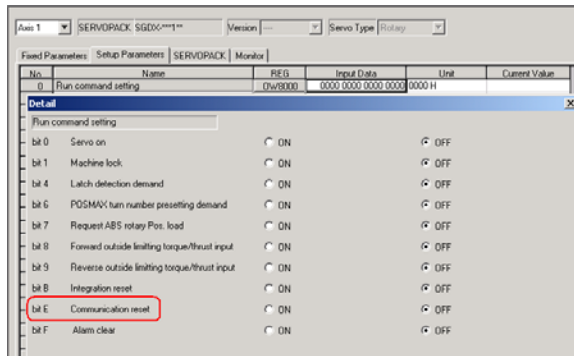
No.8 For debugging information export when C language error occurs

When the C language import failed, debugging information on the linker was exported.

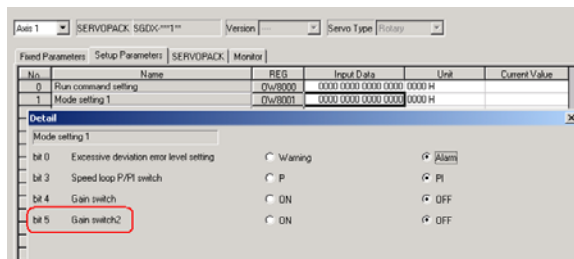
No.9 Motion parameter addition

A new parameter was added to a detailed parameter of the motion parameter (setting and monitor).

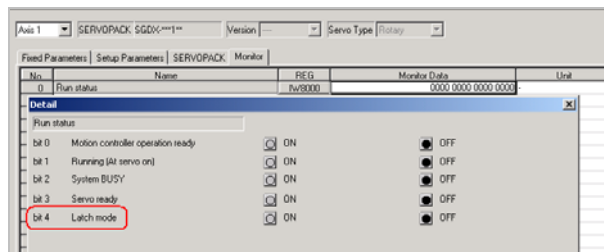
1. It is bit14 in configuration parameter "Run command setting" (OWxx00): "Communication reset" is added.



2. It is bit5 in configuration parameter "Mode setting 1" (OWxx01): "Gain switch 2" is added.

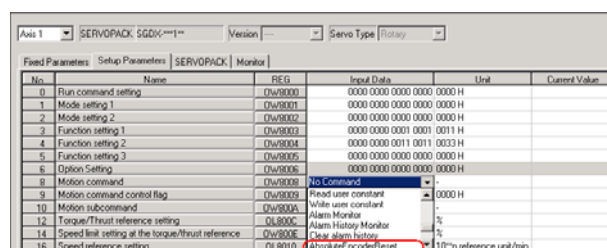


3. It is bit4 in monitor parameter "Run status" (IWxx00): "Latch mode" is added.



No.10 Motion command addition

"Absolute Encoder Reset (CMD=22)" was added to the motion command



No.11 MP920 serial and setting screen specification change

An automatic reception was changed to "Effective" in MP920 serial internal organs.

The screenshot shows the 'CIR#01' settings window. The 'Transmission Protocol' is set to 'MEMOBUS'. The 'Master/Slave' is set to 'Slave'. The 'Device Address' is '1'. The 'Serial I/F' is 'RS-232'. The 'Transmission Mode' is 'RTU'. The 'Data Length' is '8Bit'. The 'Parity' is 'even'. The 'Stop Bit' is '1Stop'. The 'Baud Rate' is '19.2K'. The 'Sending' section has 'Disable' selected. The 'Receive monitor time' section has 'Disable' selected. The 'Automatically Reception' section has 'Enable' selected. Below this, there is a table for 'Automatically Reception settings'.

Slave I/F Register Settings	Head REG	WD Size
Readout of Input Relay	1W0000	5120
Readout of Input Register	1W0000	5120
Readout / Write-in of Coil	MW0000	32768
Readout / Write-in of Hold Register	MW0000	32768

No.12 Four digit correspondence of Corifarens result display

This was corrected because it downed it when equal sign type ("=0;") that the left side doesn't exist in the Expression instruction was written.

No.13 Change of the order of displaying mechatronics link

The arrangement of the combo box was arranged by the module of the link of the mechatronics of SVB list at each product classification.

The screenshot shows a table with columns 'ST#', 'TYPE', and 'D'. The 'TYPE' column contains a list of mechatronics links. The list is sorted alphabetically by the 'TYPE' column. The items in the list are: 'SGDH-***E+NS115', 'SGDS-***1***', 'SGDX-***1***', 'SJDE-***AN*', 'SteppingMotorDRV', '***SERVO', 'JEPMC-I02310/30', 'JEPMC-I02320', 'JEPMC-PL2900', 'JEPMC-PL2910', 'JEPMC-AN2900', 'JEPMC-AN2910', 'SVB-01', 'YV250', and 'AB023-M1'.

No.14 Display trouble of present value of new ladder

The offset operation when the value of the Hex type of the twice length integer would be input soon was corrected.

No.15 AnyWire status display trouble

The set register value was checked, and the processing at the value outside the range was added.

No.16 Communication process USB connection trouble- (1)

The communication steering wheel was correctly managed.

No.17 Communication process USB connection trouble- (2)

The connected machine was checked when U SB was connected, and when it was only MP2200-02, it processed it.