

MPE720 improvement item and bug fix change

1. Function addition and improvement item

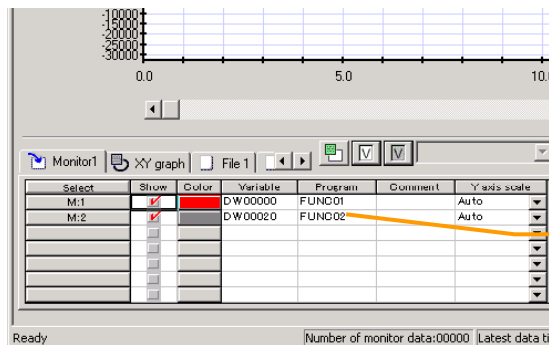
Items added and features improved from MPE720 version 5.35 to version 5.36 are as follows.

No.	Function item	Classification
1	Trace function for D register of user function.	Function addition
2	Allocation number extension of serial port of communication process.	Function addition
3	Communication process COM port number extension	Function addition
4	Motion parameter import export function	Function addition
5	Print system chart	Function addition
6	For ****SERVO	Function addition
7	Transferring message improvement	Function addition
8	For communication process gateway function	Function addition
9	MP930-03 FLASH preservation function deletion	Function addition
10	Application converter register substitution trouble	Unprevention
11	Electronic cam tool transferring trouble	Unprevention
12	Expression compiling trouble	Unprevention
13	Error display trouble when trace manager is saved online	Unprevention
14	Coil disable setting trouble	Unprevention
15	When the application converter is converted, it downs it.	Bug fix
16	Trace manager scroll trouble	Bug fix
17	Symbol transferring trouble	Bug fix
18	Tuning panel saving trouble	Bug fix
19	Motion program preservation size check function addition.	Bug fix

2. Correction content explanation

No.1 Trace function for D register of user function

A local register of the user function (D register) was able to be defined as a register for the trace.

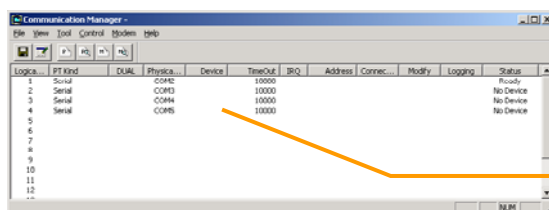


D register of the User Function is specifiable.

* This function can be used since controller Ver2.47.

No.2 Allocation number extension of serial port of communication process

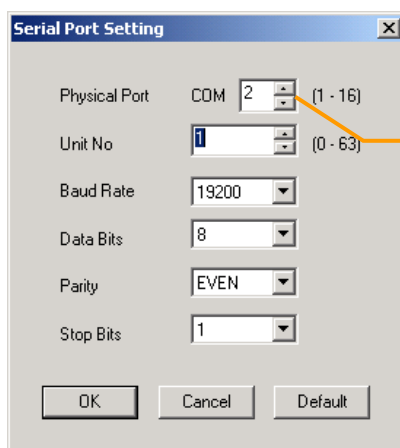
These were able to be allocated up to four though serial ports were able to be allocated to the port in the communication process only up to two at the same time up to now.



Serial can be allocated up to four at the same time.

No.3 Communication process COM port number extension

Because the number of use COM ports increased with USB-serial converter etc, the COM port number was able to be set even to the greatest 16 on the serial port casting off screen of the Communication process.

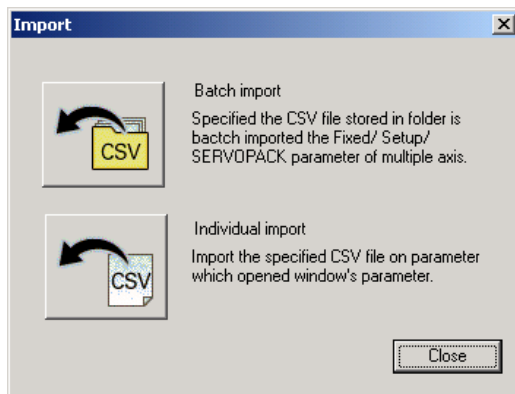


The selection of the COM port was extended to 1-16.

No.4 Motion parameter import export function

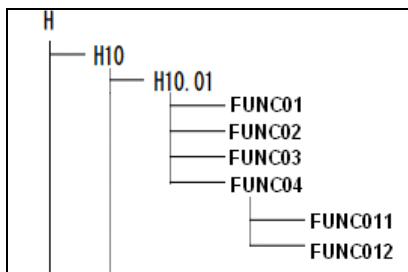
It was made importing of the fixed parameter, the configuration parameter, and the servo parameter of the MP2000 series by Comma Separated Value, and to export.

Managing the motion parameter that was able to be managed only by each PLC folder by Comma Separated Value according to this function becomes possible. As a result, a certain shaft parameter is reflected in plural shafts, and preserving the set point of the motion parameter by Comma Separated Value becomes possible.



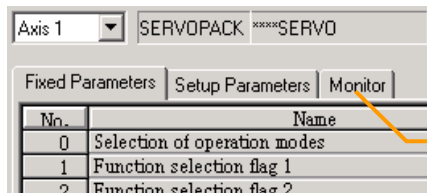
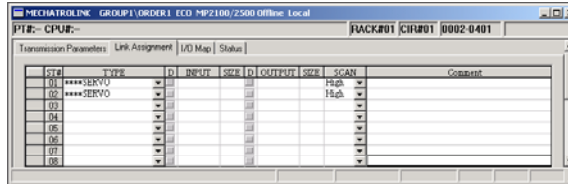
No.5 Print system chart

When the print was executed, the function to read the dependence in the user function drawing and to print the system chart was made.



No.6 For ****SERVO (MECHATROLINK module)

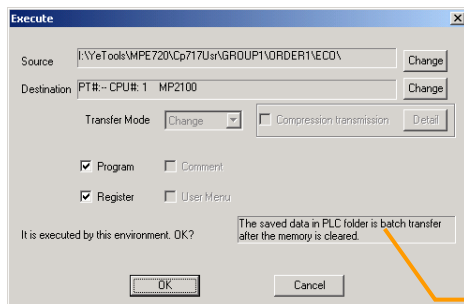
**** SERVO module of a possible casting off was added as a general-purpose MECHATROLINK servo. As a result, it ..MECHATROLINK servo made of third party becomes a possible casting off.



****SERVO doesn't have the servo parameter.

No.7 Transferring message improvement

The message concerning each transferring operation was displayed on the all transfer and the individual transfer screen.

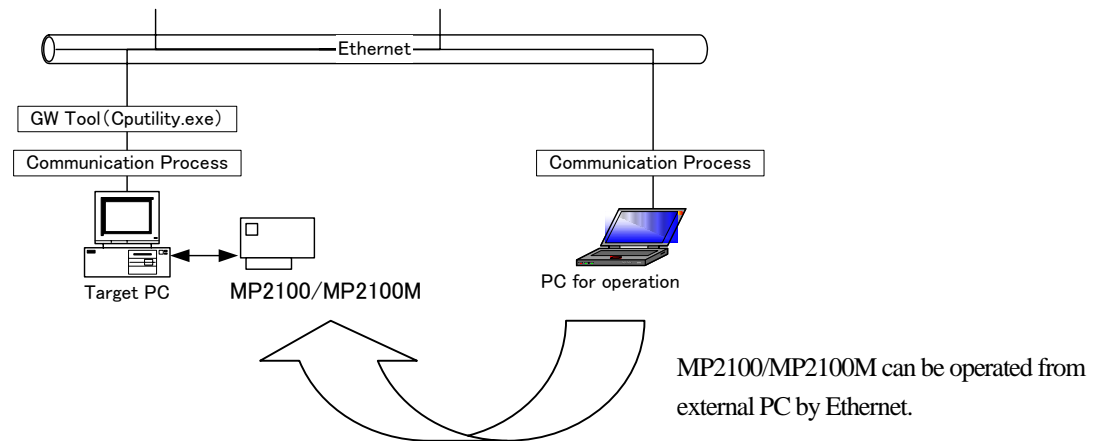


The transferring operation explanation of the object is displayed.

No.8 For communication process gateway function

MP2100/ MP2100M being attached from an outside MPE720 to PC through Ethernet when PC that uses MP2100/ MP2100M has Ethernet port and doing in engineering directly become possible.

[Connected image]



Communication process GateWay function operation procedure

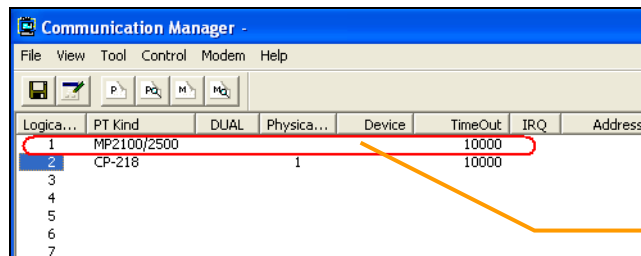
(1) MP2100/ MP2100M installation side PC setting

1. Communication process setting

It sets it as follows by the start of the Communication process of PC

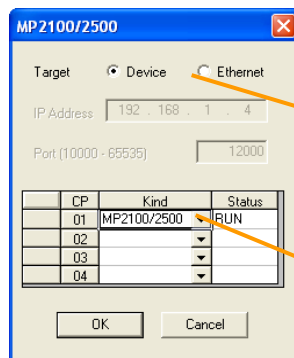
(It is called target PC at the following) to which MP2100•MP2100M is attached.

< Communication process setting >



MP2100 is allocated.

<MP2100 port detailed casting off >



"Device" is selected.

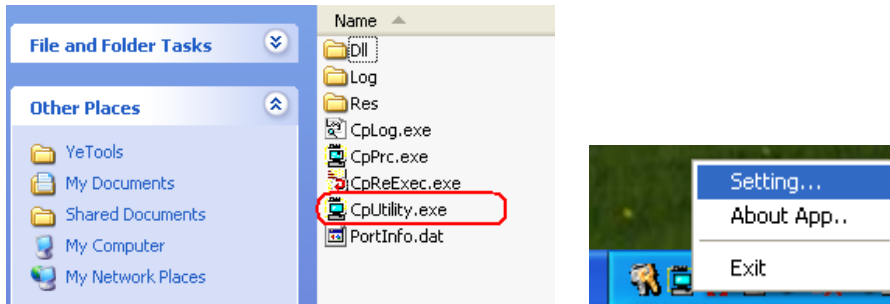
MP2100/ MP2100M is allocated.

2. Communication utility setting

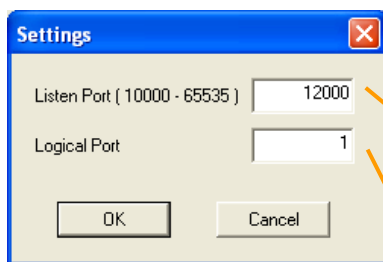
To the PC environment when you start communication utility
(Yertools\Cpcomsys\Cputility.exe)

Because the icon of communication utility is stored in the icon tray, communication utility executes
"Setting change" from mouse's pop-up menu simultaneously with eternal living.

<CpUtility setting>



The setting change screen of communication utility starts
when the setting change is executed.



The port used is set.
There is no problem like default (12000) usually.

The casting off number of MP2100/MP2100M
set in the communicating process is set.

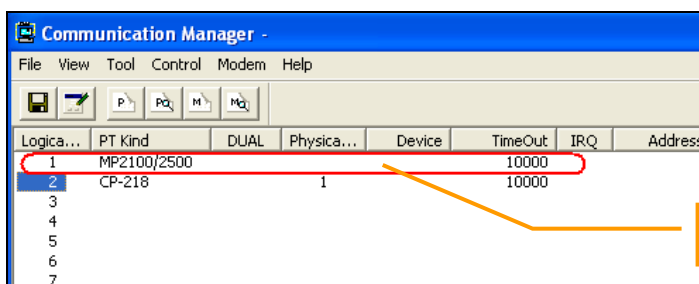
Please change according to the environment that uses the reception port and the Communication process
logical port number and set it.

*: In the above-mentioned example, 12000(default configuration) and the communication portnumber
specify the casting off portnumber of MP2100/MP2500 previously set on the casting off screen of the
Communication process (1 here) for a reception port.

(2) Setting of PC for operation

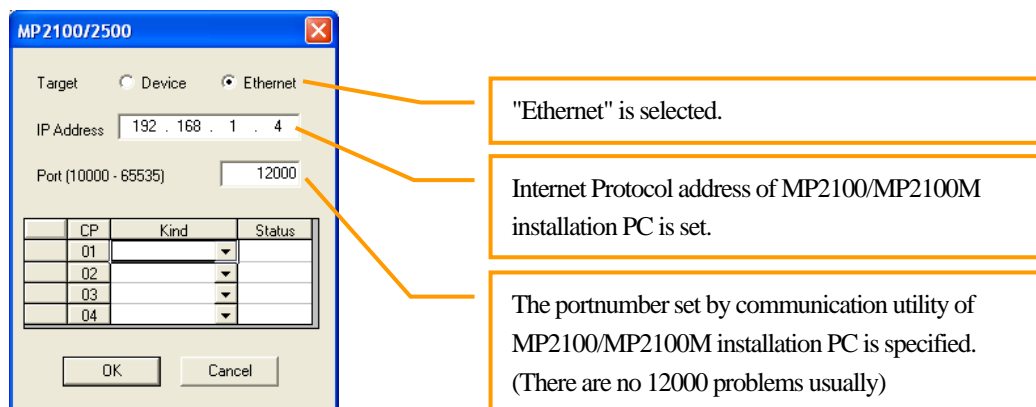
The Communication process of PC for the operation is started, and it sets it as follows.

< Communication process setting >



MP2100 is allocated.

< MP2100 port detailed casting off >

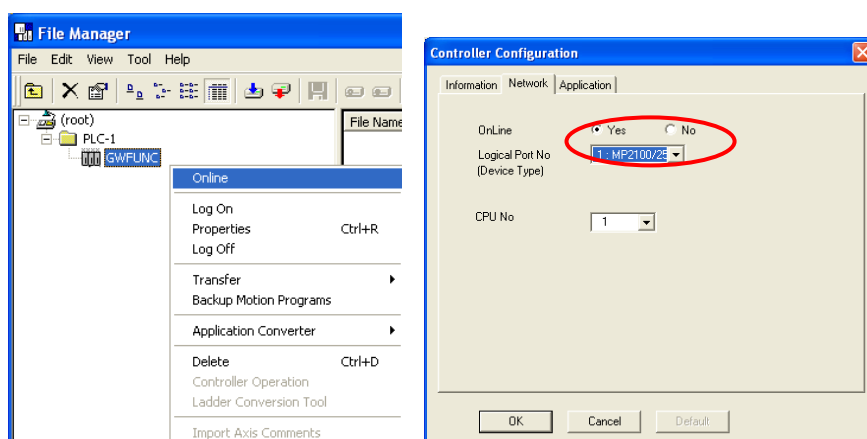


(3) Startup of MPE720

(1) and (2) When it drinks and the operation is completed, the PLC folder of MP2100/ MP2100M is made by starting the file manager of the MPE720 with operation side PC.

And, the liquid penetrant examination number of MP2100/ MP2100M that cracks in the Communication process ahead and is fixed is set to the logical port number at the connection destination.

(It is the same as the connection with usual MP2100/ MP2100M.)



Attention:

If the login operation is repeated when the logical port setting of communication utility is set to casting offs other than MP2100 by mistake when PC for the operation accesses target PC, it is likely to become no reply. In this case, please reboot communication Utility.

No.9 MP930-03 FLASH preservation function deletion

It corresponded to this because the FLASH preservation function was deleted from MP930-03 before though MP930-03 that replaced SRAM with a high performance version was going to be commercialized for the bit taking the shape trouble of MP930.

No.10 Application converter register substitution trouble

When the register was moved to the area of the register symbol with the allocation, the register conversion already shifted, it became amusing occasionally, and this had been corrected.

No.11 Electronic cam tool transferring trouble

Because the data made according to the transferring procedure had not been correctly occasionally transferred when transferring it with the electronic cam tool, this was corrected.

No.12 Expression compiling trouble

This was corrected because it downed it when equal sign type ("=0;") that the left side doesn't exist in the Expression instruction was written.

No.13 Error display trouble when trace manager is saved online

Because the saving processing had been completed without displaying the error dialog display even if it was an erroneous definition (The function definition that did not exist was saved) in the trace manager when online was connected, this was corrected.

No.14 Coil disable setting trouble

Because all states of the coil had become disabling ON if it opened again again when the state of the coil was set to enable setting or disabling OFF on the ladder after it had set it of disabling ON, this was corrected.

No.15 When the application converter is converted, it downs it

Because the application converter had downed when the application change execution was done the new ladder data that had been compiled before version 5.32, this was corrected.

No.16 Trace manager scroll trouble

This was corrected because it downed it when the scroll was repeated up and down with the mouse wheel after the cell display part was maximum displayed as a trace manager.

No.17 Symbol transferring trouble

Because the symbol data of a new ladder had not been correctly occasionally transmitted when off-line was forwarded, this was corrected.

No.18 Tuning panel saving trouble

Because "Writing error" was generated when returning to the tuning panel again after the motion editor was opened after the tuning panel was opened when the new ladder editor was used and saving it and it was not possible to save it, this was corrected.

No.19 Motion program preservation size check function addition

Because the engineering manager had been downed when the text size of the motion program exceeded 64kbyte when the program was saved, this was corrected.